

# DH ULTRAMINIATURE SWITCH

## DH ultraminiature switch

- Dimensions only 8.2 mm × 2.7 mm × 6.2 mm
- Designed for low switching currents and voltages
- Available with or without auxiliary actuator
- Solder connection or use lying or standing on a circuit board



## Technical specifications

<b>Series</b>	DH ❶
<b>Contact configuration</b>	S.P.D.T.
<b>Contact gap</b>	< 3 mm
<b>Switching voltage max.</b>	30 VDC
<b>Switching current</b>	5 to 500 mA DC
<b>Operating voltage</b>	Max. 90 cN
<b>Total travel</b>	Approx. 0.85 mm without auxiliary actuator
<b>Mechanical life</b>	> 50,000 operations
<b>Electrical life (max. load)</b>	> 30,000 operations
<b>Ambient temperature</b>	-25°C to +70°C

## Materials

<b>Housing</b>	PPS (UL 94V-0)
<b>Cover</b>	PBT (UL 94V-0)
<b>Auxiliary actuator</b>	PBT (UL 94V-0)
<b>Terminals</b>	CuZn striped silver-plated
<b>Contacts</b>	AgNi, gal. Au
<b>Degree of protection</b>	IP40
<b>Switch interior</b>	

## Electrical rating and operating life ❷

Electrical rating	Operating life		
	at nominal load	mechanical	Code
5–500 mA 30 VDC	30,000	50,000	2

## Circuitry ❸

Model	Code
S.P.D.T.	C

## Terminal type ❹

Model	Code
Solder terminal, straight, 1.3 x 3.1 mm	B1
PCB terminal, straight, 0.64 x 3.1 mm	C4
PCB terminal, RH side, 0.64 x 3.1 mm	C5
PCB terminal, LH side, 0.64 x 3.1 mm	C6

## Generation of order code (example)

The order code consists of 5 parameters:

❶	❷	❸	❹	❺
Series	Electrical rating	Circuitry	Terminal type	Auxiliary actuator
DH = Ultraminiature switch	2 = 5–500 mA, 30 V DC	C = S.P.D.T.	B1 = Solder terminal, straight 1.3 x 3.1	PA = with auxiliary actuator

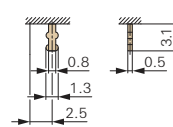
- Not every configurable variant is available for order. Please contact us.
- The final two digits of article numbers on commercial documents refer to the index of the respective drawing.

## Auxiliary actuator ❺

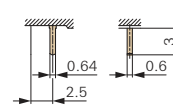
Auxiliary actuator Ausführung	Operating force max.(cN)	Max. pretravel (mm)	Min. overtravel (mm)	Differential travel max. (mm)	Max. rest position (mm)	Operating point (mm)	Code
Without auxiliary actuator	90	–	0.1	0.07	6.2	5.4 ± 0.15	AA
With auxiliary actuator	50	–	0.3	0.6	8.5	6.7 ± 0.5	PA

## Terminals

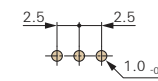
### Solder terminal



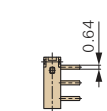
### PCB terminal, straight



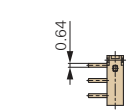
### Drilling pattern



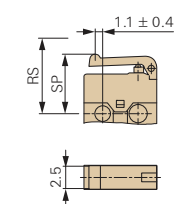
### PCB terminal RH side



### LH side



## Auxiliary actuator (Plastic)



Dimensions in mm

