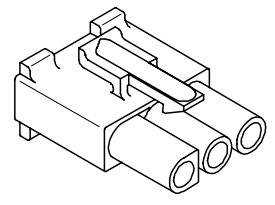
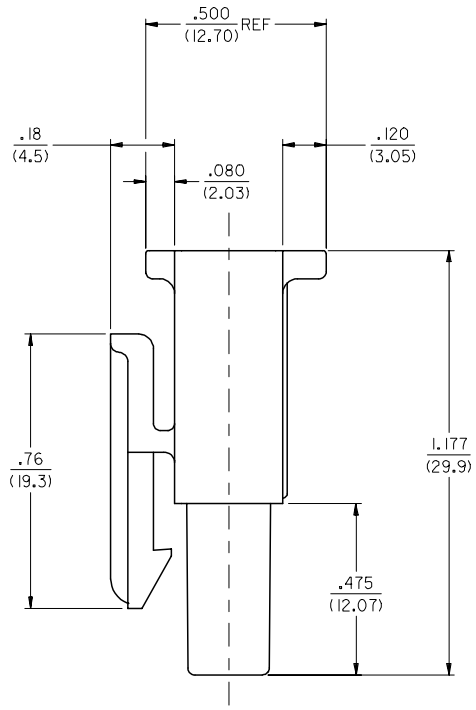
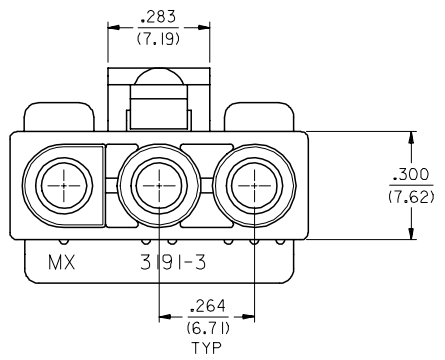
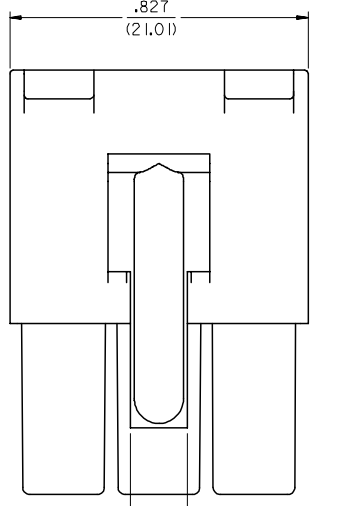
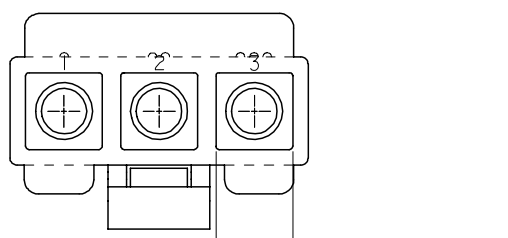


13 12 11 10 9 8 7 6 5 4 3 2 1

J
I
H
G
F
E
D
C
B
A

J
I
H
G
F
E
D
C
B
A



RECEPTACLE

| | | | | | | | | | |
|--|-------------------------------|--|--------------------|--------------------------|------------------------|------------------------------|------------------------------|-------------------------------------|---|
| INITIAL RELEASE EC NO: UCP2008-0136 DRAWN:LSCHMIDT 2007/07/25 CHECKD:LSCHMIDT 2007/07/27 APPR:FSM TH 2007/07/27 REV A | QUALITY SYMBOLS ▽=0 ▽=0 | GENERAL TOLERANCES (UNLESS SPECIFIED) | | DIMENSION STYLE IN/MM | | SCALE 4:1 | DESIGN UNITS INCH | THIRD ANGLE PROJECTION | |
| | | 4 PLACES ± .005 ± .005 3 PLACES ± .010 ± .010 2 PLACES ± 0.25 ± .015 1 PLACE ± 0.38 ± .015 ANGULAR ±1/2° | DRAWN BY AELHAG | DATE 2007/06/27 | CHECKED BY LSCHMIDT | DATE 2007/07/19 | APPROVED BY FSM ITHROEMER | DATE 2007/07/20 | TITLE .093/(2.36) HOUSINGS, PLUG AND RECEPTACLE, 3 CKT .264/(6.71) CTRS. |
| DRAFT WHERE APPLICABLE MUST REMAIN WITHIN DIMENSIONS | | | | SEE CHART | | MATERIAL NO. SD-3191-3**1 | | DOCUMENT NO. SHEET NO. 2 OF 3 | |
| THIS DRAWING CONTAINS INFORMATION THAT IS PROPRIETARY TO MOLEX INCORPORATED AND SHOULD NOT BE USED WITHOUT WRITTEN PERMISSION | | | | | | | | | |

12 11 10 9 8 7 6 5 4 3 2 1

| | | | | | | | | | | | | |
|------------|----|------------|------------|------------|---|------------|---|---|---|---|---|---|
| 13 | 12 | 11 | 10 | 9 | 8 | 7 | 6 | 5 | 4 | 3 | 2 | 1 |
| PLUG | | | RECEPTACLE | | | | | | | | | |
| PART NO. | | ENG. NO. | | PART NO. | | ENG. NO. | | | | | | |
| 50-36-1722 | | 3191-3P1-1 | | 50-36-1689 | | 3191-3R1-1 | | | | | | |
| | | | | | | | | | | | | |
| | | | | | | | | | | | | |
| | | | | | | | | | | | | |

LEGEND

3191-3****-*

CIRCUIT SIZE

P = PLUG

R = RECEPTACLE

EARS: BLANK = WITH PREBENT EARS (PLUG ONLY)

I = WITHOUT EARS

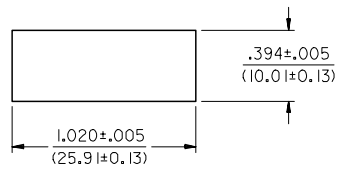
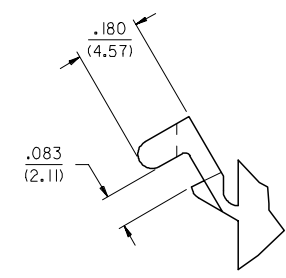
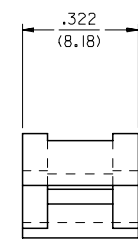
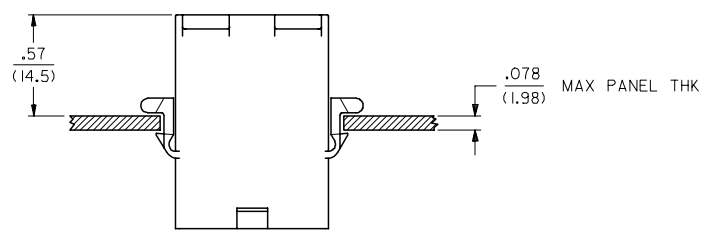
COLOR: NOT APPLICABLE

MATERIAL:

1: CODE B.

NOTES:

1. MATERIAL: B = NYLON (PA 6), UL94 V-0, IEC 60335-1, 4TH EDITION
GLOW WIRE CAPABLE; COLOR: BLACK
2. FINISH: NONE
3. PRODUCT SPECIFICATION: PS-02-08
4. PACKAGING SPECIFICATION: PK-3191-001
5. PARTS CONFORM TO CLASS B REQUIREMENTS OF COSMETIC SPECIFICATION PS-45499-002 EXCEPT SINK AND DISCOLORATION MEETS CLASS 'C' REQUIREMENTS.



RECOMMENDED HOLE CUTOUT

DETAIL "A"
PREBENT MOUNTING EAR
(SCALE 4:1)

| | | | | | | | | | | | |
|---|-------------------------------|---------------------------------------|-----------------------|--------------------------|--------------------|---|----------------------|------------------------|--|--------|--|
| INITIAL RELEASE EC NO: UCP2008-0136 DRWNL: SCHMIDT 2007/07/25 CHKD: SCHMIDT 2007/07/27 APPR: FSM TH 2007/07/27 REVISIONS A | QUALITY SYMBOLS = 0 = 0 | GENERAL TOLERANCES (UNLESS SPECIFIED) | | DIMENSION STYLE IN/MM | | SCALE --- | DESIGN UNITS INCH | THIRD ANGLE PROJECTION | | | |
| | | 4 PLACES ± --- ± --- | 3 PLACES ± --- ± .010 | DRAWN BY AELHAG | DATE 2007/06/27 | TITLE .093/(2.36) HOUSINGS, PLUG AND RECEPTACLE, 3 CKT .264/(6.71) CTRS. | | | | | |
| | | 2 PLACES ± 0.25 ± .015 | 1 PLACE ± 0.38 ± --- | CHECKED BY SCHMIDT | DATE 2007/07/19 | APPROVED BY FSMITHROEMER 2007/07/20 | | | | | |
| | | ANGULAR ±1/2° | | MATERIAL NO. | | DOCUMENT NO. | | SHEET NO. | | 3 OF 3 | |
| DRAFT WHERE APPLICABLE MUST REMAIN WITHIN DIMENSIONS | | | | SEE CHART | | Molex MOLEX INCORPORATED | | SD-3191-3**1 | | | |
| THIS DRAWING CONTAINS INFORMATION THAT IS PROPRIETARY TO MOLEX INCORPORATED AND SHOULD NOT BE USED WITHOUT WRITTEN PERMISSION | | | | | | | | | | | |