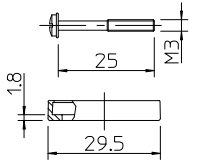
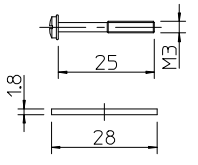


10 9 8 7 6 5 4 3 2 1

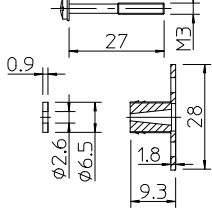
Screw M3x25  
and Profile Gasket  
Qty 2  
(See sheet 2)



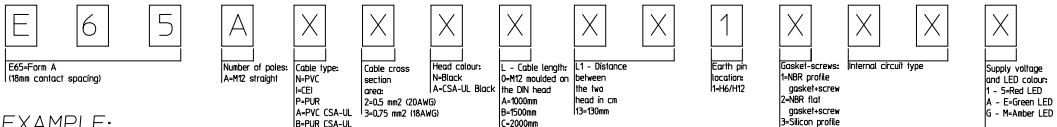
Screw M3x25  
and Flat Gasket  
Qty 2  
(See sheet 2)



Screw M3x27  
with Grommet  
& Integrated Gasket  
Qty 2  
(See sheet 2)



PART NUMBER MATRIX



EXAMPLE:  
E65AP2NA2011C4H

E65-Form A (16mm contact spacing)

Number of poles

Cable type

Cable cross section area

Head colour

L - Cable length

L1 - Distance between the two head in cm

Earth pin locator

Gasket-screw

Internal circuit type

Supply voltage and LED colour

EXAMPLE:  
E65AP2NA2011C4H

Number of poles: A-H12 straight  
Cable type: N-PC, I-CE, P-PUR, A-PC, CSA-UL, B-PUR, CSA-UL  
Cable cross section area: 2-0.5 mm<sup>2</sup> (20AWG), 3-0.75 mm<sup>2</sup> (18AWG)  
Head colour: A-Black, B-Black  
L - Cable length: Q-H12 moulded on the DN head, A-1000mm, B-1500mm, C-2000mm, D-2500mm, E-3000mm, F-3500mm, G-4000mm, H-4500mm, L-5000mm, M-5500mm, N-6000mm  
L1 - Distance between the two head in cm: P-4500mm, Q-7000mm, R-7500mm, S-8000mm, T-8500mm, U-9000mm, V-9500mm, W-1000mm, X-1000mm  
Earth pin locator: 1-46/H12  
Gasket-screw: 1-NBR profile gasket+screw, 2-NBR flat gasket+screw, 3-Silicon profile gasket+screw, 4-Silicon flat gasket+screw  
Internal circuit type: P-NBR integrated gasket+screw (IP67), K-NBR integrated gasket+stainless steel screw (IP 67)  
Supply voltage and LED colour: 1A-G-12V, 2B-H-24V, 3C-K-48V, 4DL-15V, 5E-M-230V

CIRCUIT TAMPO PRINTOUT/WHITE  
(Not for E65AXXXXXX1X000)

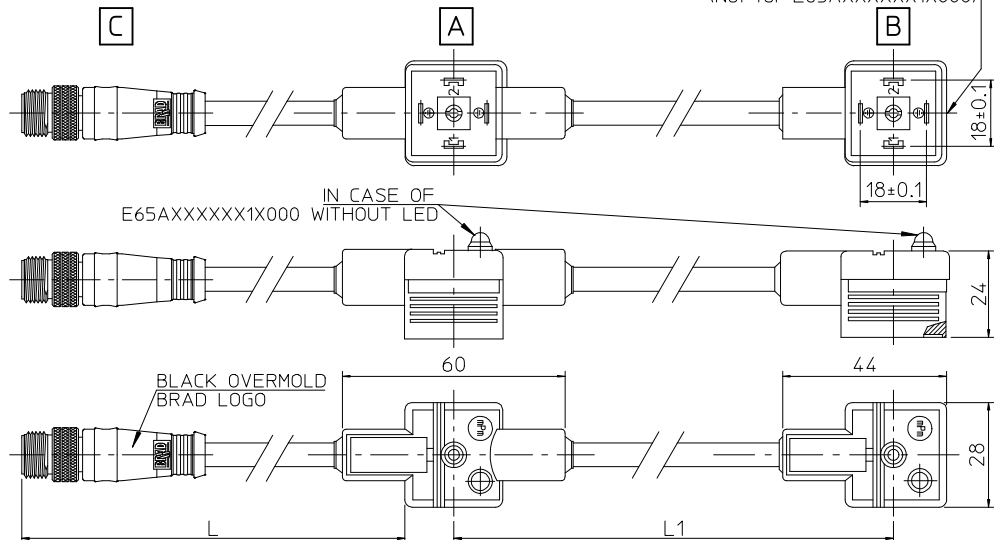


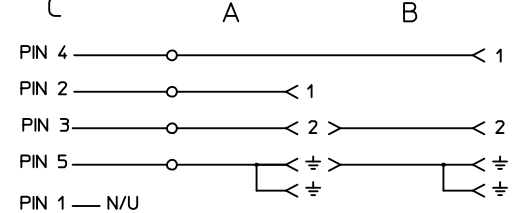
Table of length tolerances [mm]

Over	Up to and including	Tolerance
0	1000	±20
1000	3000	±30
3000	5000	±40
5000	10000	±50
10000	15000	±100
15000	20000	±150
20000		±L/100

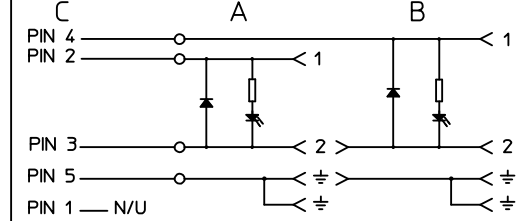
Table 1 - PNs list

Molex PN	Engineering No.	L [mm]	L1 [mm]
1210550072	E65AI2NY1411C4H	500	140
1210550130	E65AP2NA2011C4H	1000	200
1210550131	E65AP2NB2011C4H	1500	200
1210550138	E65AP2NC2011C4H	2000	200
1210550158	E65AP2NA201PC4H	1000	200
1210550170	E65AP2NA131PC32	1000	130
1210550178	E65AP2NA3011C4L	1000	300
1210550208	E65AP2NA1311C4B	1000	130
1210550250	E65AP2NA1322C4B	1000	130
1210550260	E65AP3NB201PSOH	1500	200
1210550264	E65AP2NA1312C4B	1000	130
1210550305	E65AP2NC201KSOH	2000	200
1210550319	E65AI3NB1411C4H	1500	140
1210550320	E65AI3NE1411C4H	3000	140

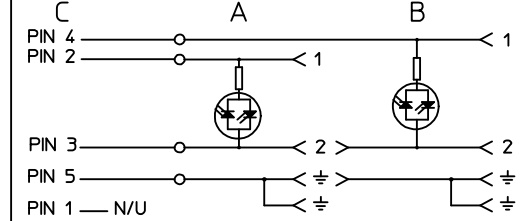
ELECTRICAL DIAGRAM E65AXXXXXX000



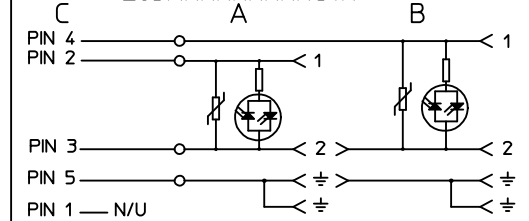
ELECTRICAL DIAGRAM E65AXXXXXXC3X



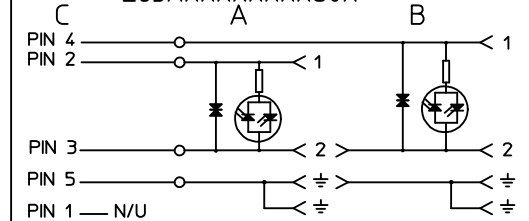
ELECTRICAL DIAGRAM E65AXXXXXXA1X



ELECTRICAL DIAGRAM E65AXXXXXXC4X



ELECTRICAL DIAGRAM E65AXXXXXXS0X



ORIGINAL RELEASE  
EC NO: IPG2016-0461  
DRWN: JMARSZALEK 2013/10/30  
CHKD:  
APPR: MIWASIECZKO 2015/09/28

QUALITY SYMBOLS  
▽=0  
◁=0

GENERAL TOLERANCES (UNLESS SPECIFIED)

	mm	INCH
4 PLACES	± ---	± ---
3 PLACES	± ---	± ---
2 PLACES	± ---	± ---
1 PLACE	± ---	± ---
0 PLACE	± ---	± ---

ANGULAR ±---°

DRAFT WHERE APPLICABLE MUST REMAIN WITHIN DIMENSIONS

DIMENSION STYLE  
MM ONLY

DRAWN BY: JMARSZALEK  
DATE: 2013/10/30

CHECKED BY: \_\_\_\_\_  
DATE: \_\_\_\_\_

APPROVED BY: MIWASIECZKO  
DATE: 2015/09/28

MATERIAL NO. SEE TABLE 1

SCALE: -  
DESIGN UNITS: METRIC  
THIRD ANGLE PROJECTION

TITLE: E65AXXXXXX1XXXX DUAL DIN FORM A WITH M12

**molex**

DOCUMENT NO. SD-121055-007  
SHEET NO. 1 OF 1

THIS DRAWING CONTAINS INFORMATION THAT IS PROPRIETARY TO MOLEX INCORPORATED AND SHOULD NOT BE USED WITHOUT WRITTEN PERMISSION

9 8 7 6 5 4 3 2 1