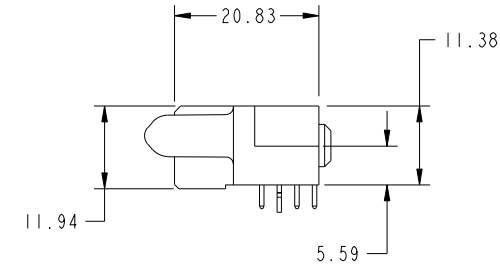
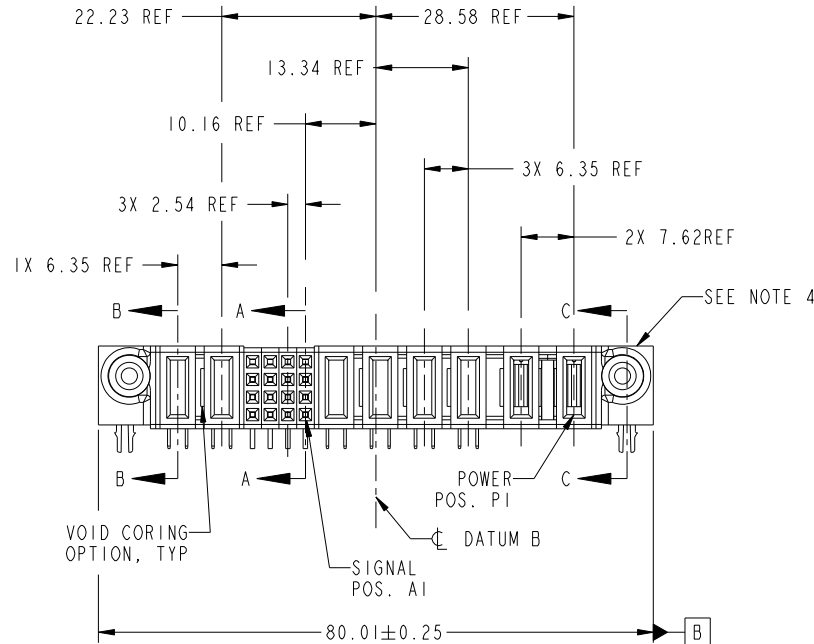
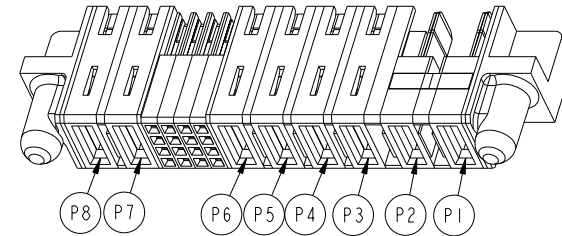
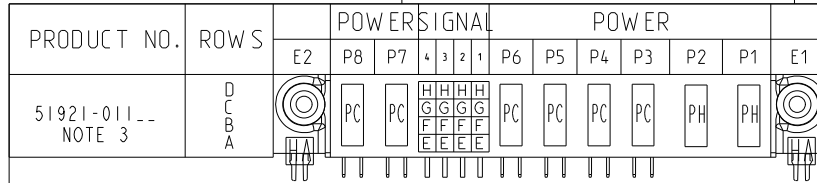


Tous droits strictement reserves. Reproduction ou communication a des tiers interdite sous quelque forme que ce soit sans autorisation ecrite du proprietaire. Propriete de c FCI. Droits de reproduction FCI.



All rights strictly reserved. Reproduction or issue to third parties in any form whatever is not permitted without written authority from the proprietor. Property of FCI. Copyright FCI.



CODE	DIM "M" MATING LENGTH	DIM "W" MIN WIPE LENGTH	CONTACT TYPE
PC	2.34		POWER
H	N/A	N/A	SIGNAL
G	N/A	N/A	SIGNAL
F	N/A	N/A	SIGNAL
E	N/A	N/A	SIGNAL
HA	N/A		HOLD-DOWN
PH	2.34	4.50	POWER

mat'l code				SEE NOTE 2		tolerances unless otherwise specified		CUSTOMER	
ltr	ecn no.	dr	date	linear	0.X ± 0.3	projection		COPY	
A	DG07-0035	RYAN	02/28/07		0.XX ± 0.13	M		title	
B	DG08-0273	WD	12/10/08	angles	0.XXX ± 0.051	MIM		2CP + 4P + 16S + 2P	
				dr	0° ± 2°	scale		R/A CABLE & STB RECEPTACLE	
				enr	RYAN YUAN 01/26/07	1:1		product family	
				chr	RYAN YUAN 03/04/07			PwrBlade	
				appd	BEER FU 01/26/07			code	
					JOSEPH HSIA 01/26/07			213	
sheet index	revision sheet	B 1	B 2	B 3	B 4			size	
								dwg no	
								A 51921-011	
								sheet	
								1 of 4	

FCI www.fciconnect.com

product family PwrBlade code 213

size A dwg no 51921-011 sheet 1 of 4

cage code 22526

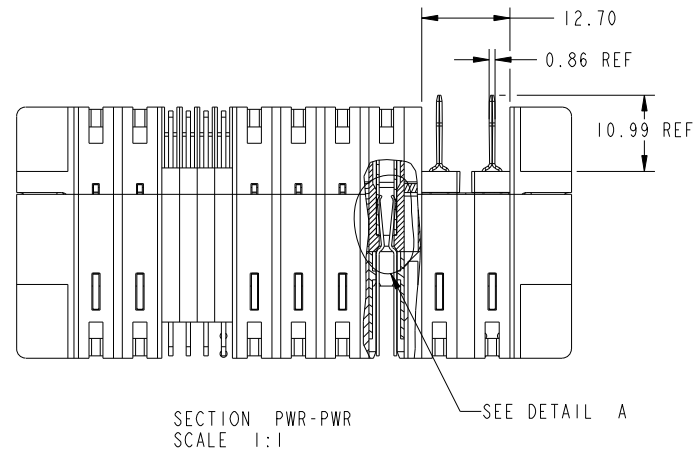
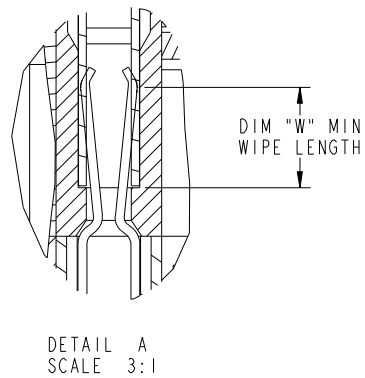
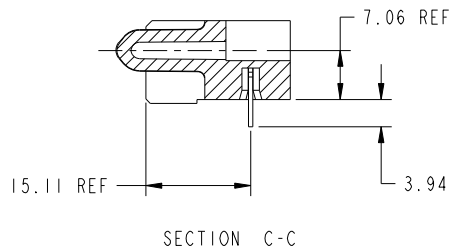
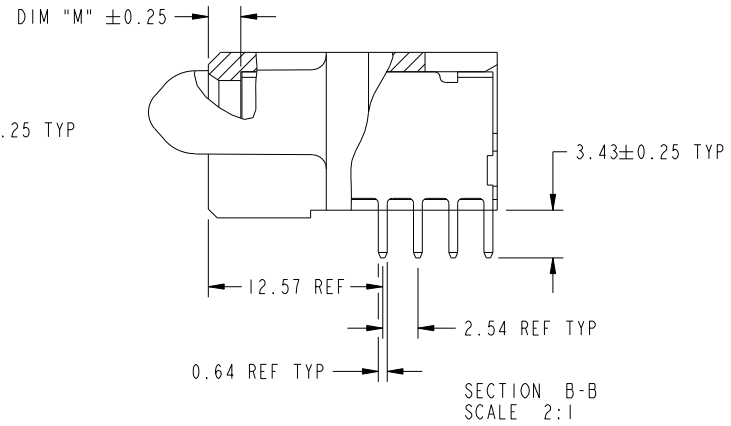
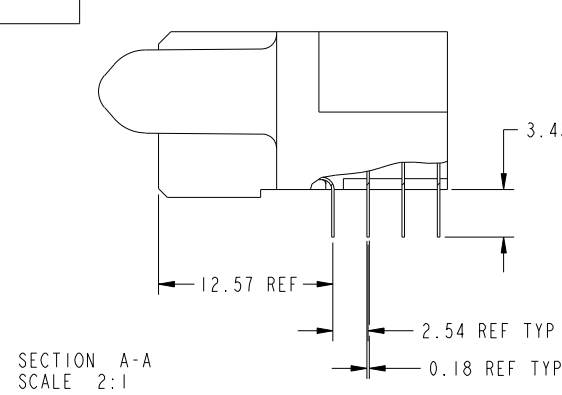
Pro/E

Tous droits strictement reserves. Reproduction ou communication a des tiers interdite sous quelque forme que ce soit sans autorisation ecrite du proprietaire. Propriete de c FCI. Droits de reproduction FCI.



All rights strictly reserved. Reproduction or issue to third parties in any form whatever is not permitted without written authority from the proprietor. Property of FCI. Copyright FCI.

PRODUCT NUMBER
51921-011--
NOTE 3



mat'l code		SEE NOTE 2		tolerances unless otherwise specified		CUSTOMER		FCI	
ltr	ecn no.	dr	date	linear	0.X ± 0.3	COPY		www.fciconnect.com	
B					0.XX ± 0.13	projection		title	
				angles	0.XXX ± 0.051	⊕		2CP + 4P + 16S + 2P R/A CABLE & STB RECEPTACLE	
				dr	0 ± 2°	MIM		product family	
				enr	RYAN YUAN 01/26/07	← MIM →		PwrBlade	
				chr	RYAN YUAN 03/04/07	scale		code	
				appd	BEER FU 01/26/07	1:1		213	
					JOSEPH HSIA 01/26/07	A		sheet	
sheet index	revision sheet							2 of 4	

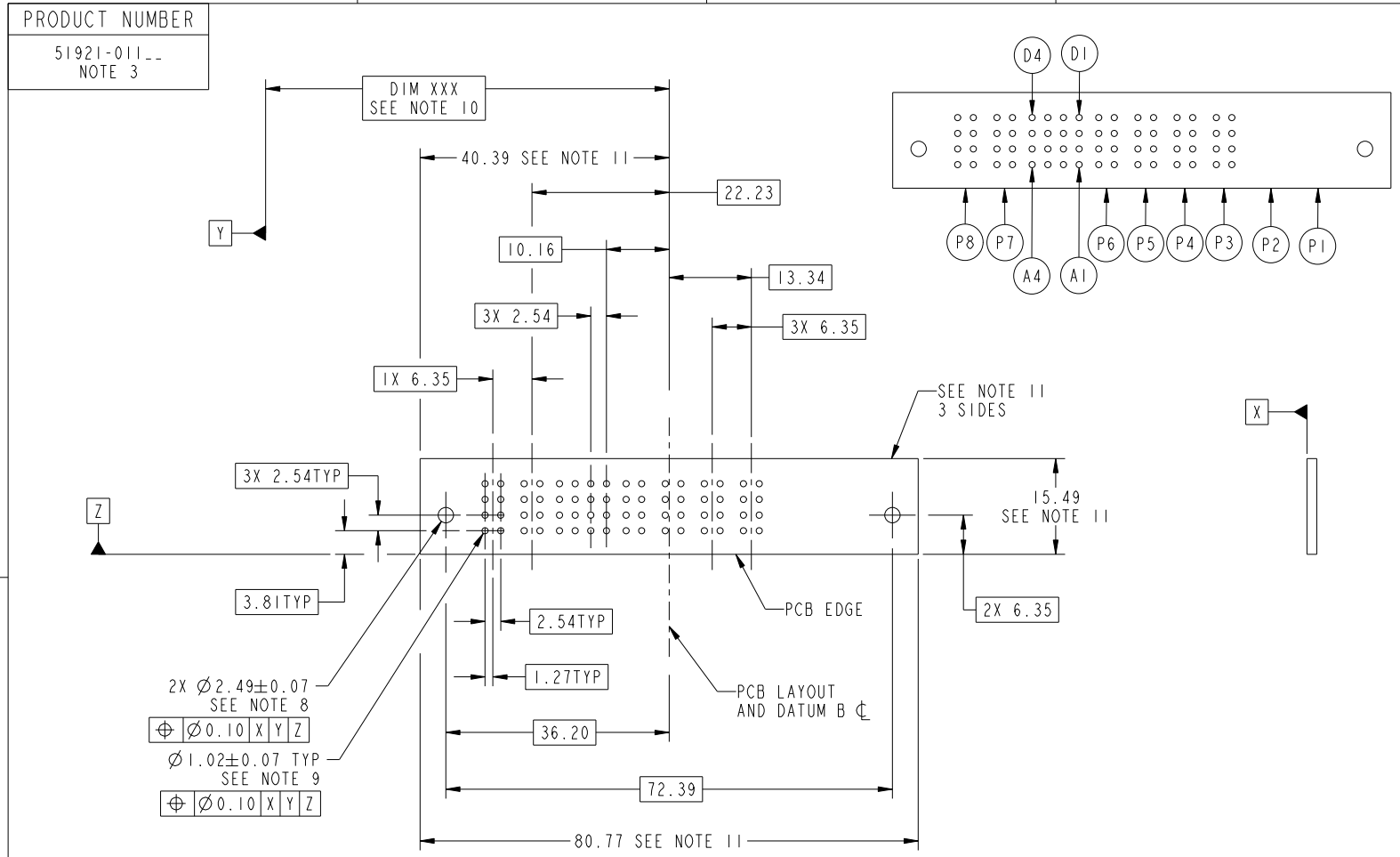
cage code 22526

Pro/E

Tous droits strictement reserves. Reproduction ou communication a des tiers interdite sous quelque forme que ce soit sans autorisation ecrite du proprietaire. Propriete de c FCI. Droits de reproduction FCI.



All rights strictly reserved. Reproduction or issue to third parties in any form whatever is not permitted without written authority from the proprietor. Property of FCI. Copyright FCI.



mat'l code		SEE NOTE		tolerances unless otherwise specified		CUSTOMER		FCI		www.fciconnect.com	
ltr	ecn no.	dr	date	linear	0.X ± 0.3	COPY				title	
B					0.XX ± 0.13	projection				2CP + 4P + 16S + 2P	
				angles	0.XXX ± 0.051					R/A CABLE & STB RECEPTACLE	
				dr	RYAN YUAN	01/26/07	product family		PwrBlade	code	213
				enr	RYAN YUAN	03/04/07	size		dwg no	3 of 4	
				chr	BEER FU	01/26/07	scale		51921-011		
				appd	JOSEPH HSIA	01/26/07	1:1		A		
sheet index	revision sheet										

cage code 22526

Pro/E

Tous droits strictement reserves. Reproduction ou communication a des tiers interdite sous quelque forme que ce soit sans autorisation ecrite du proprietaire. Propriete de c FCI. Droits de reproduction FCI.



All rights strictly reserved. Reproduction or issue to third parties in any form whatever is not permitted without written authority from the proprietor. Property of FCI. Copyright FCI.

PRODUCT NUMBER
51921-011--
NOTE 3

NOTES:

1. DIMENSIONS AND TOLERANCES ARE IN ACCORDANCE WITH ASME Y14.5M, 1994 UNLESS OTHERWISE SPECIFIED.

CONNECTOR NOTES:

- 2. HOUSING MATERIAL: UL 94 V-0 GLASS FILLED HIGH-TEMP THERMOPLASTIC
POWER CONTACT MATERIAL: COPPER ALLOY
SIGNAL PIN MATERIAL: COPPER ALLOY
- 3. SEE ITEM 5 & 6 IN PRINT 10064183 FOR PLATING SPEC OF 51921-011 AND 51921-011LF RESPECTIVELY.
- 4. MANUFACTURER'S NAME, P/N, AND DATE CODE TO APPEAR ON THIS SURFACE.
- 5. PRODUCT SPECIFICATION GS-12-149.
APPLICATION SPECIFICATION BUS-20-067.
- 6. PACKAGED IN TRAYS.

PCB NOTES:

- 7. ALL HOLE DIAMETERS ARE FINISHED HOLE SIZE.
- 8. MOUNTING HOLES, WHERE APPLICABLE, ARE UNPLATED.
- 9. $\varnothing 1.151 \pm 0.025$ DRILLED HOLES PLATED WITH
0.008 MIN SnPb OR Sn OVER 0.03
TO 0.08 Cu PLATING TO ACHIEVE
 $\varnothing 1.02 \pm .07$ HOLE.
- 10. "DIM XXX" TO BE DETERMINED BY THE CUSTOMER.
- 11. CONNECTOR KEEP-OUT ZONE.
- 12. A SYMBOL WILL BE NEXT TO ANY DIMENSION, VIEW, OR NOTE WHICH HAS BEEN MODIFIED WITH THE CURRENT DRAWING REVISION.

mat'l code				SEE NOTE 2		tolerances unless otherwise specified		CUSTOMER		FCI	
ltr	ecn no.	dr	date	linear	0.X ± 0.3		COPY		www.fciconnect.com		
B					0.XX ± 0.13		projection		title		
					0.XXX ± 0.051				2CP + 4P + 16S + 2P R/A CABLE & STB RECEPTACLE		
				angles	0° ± 2°				product family		code
				dr	RYAN YUAN	01/26/07	scale		PwrBlade		213
				engr	RYAN YUAN	03/04/07	1:1		size		sheet
				chr	BEER FU	01/26/07	A		dwg no		4 of 4
				appd	JOSEPH HSIA	01/26/07			51921-011		
sheet index	revision sheet										

cage code 22526

Pro/E