



USB-TO-DIGI XBEE®  
WIRELESS ADAPTER  
FOR LAPTOPS AND PCS



# DIGI XBEE 3 USB ADAPTER

The Digi XBee 3 USB Adapter provides local connectivity to wireless Digi XBee networks from a laptop or PC, enabling local commissioning of the network and its devices

The Digi XBee® 3 USB Adapter is an easy-to-use USB-to-Digi XBee Wireless Personal Area Network (WPAN) adapter, providing local connectivity to wireless networks. Simply plug the Digi XBee 3 USB Adapter into the USB port of a laptop or PC for instant access to a Digi XBee network and its devices. This compact, USB-powered wireless adapter enables local network configuration, diagnostics and device monitoring.

The Digi XBee 3 USB Adapter is part of Digi's XBee family of solutions, providing wireless communication between devices, including routers and gateways. The Digi XBee 3 USB Adapter uses Digi's XBee 3 module which lets you program the desired protocol using the Digi XCTU software platform. The adapter connects with DigiMesh, 802.15.4 and Zigbee network protocols.

## Digi XBee 3 USB Adapter and Network Assistant

Digi Network Assistant is a Windows-based free software download that works in tandem with the Digi XBee 3 USB Adapter. Used together, these tools enable network technicians to perform a range of tasks on a local network, out in the field, whether or not network connectivity is available. These tasks may include administering on-site surveys and troubleshooting through the network mapping feature, reviewing the status of all nodes, and performing over-the-air firmware updates.

You can download and install the Digi XBee Network Assistant at [www.digi.com/xbeetworkassistant](http://www.digi.com/xbeetworkassistant).

## BENEFITS

- Provides connectivity to local Digi XBee networks from a laptop/PC
- Enables fast local commissioning of devices on the local network
- Programmable module to communicate with any of Digi's supported wireless protocols
- USB powered
- LEDs for UART traffic and network association

## RELATED PRODUCTS



Digi XBee 3  
Zigbee 3



Digi XBee  
Zigbee Gateway

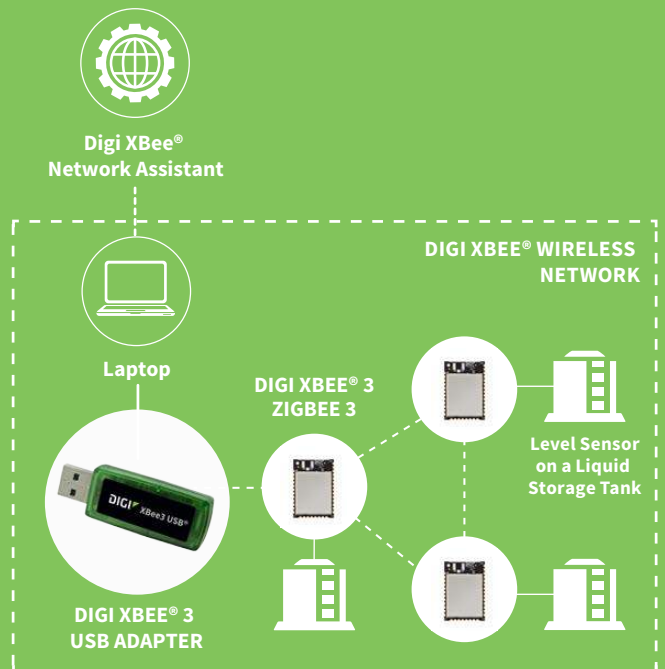


Digi Network  
Assistant



Digi XCTU

## APPLICATION EXAMPLE



## SPECIFICATIONS

## DIGI XBEE® 3 USB ADAPTER

### PERFORMANCE

<b>OUTDOOR/RF LINE-OF-SIGHT RANGE*</b>	Up to 1968 ft (600 m)
<b>TRANSMIT POWER OUTPUT (NOMINAL 25° C)</b>	6.3 mW (8 dBm)
<b>RF DATA RATE</b>	250 Kbps
<b>SERIAL INTERFACE DATA RATE (SOFTWARE SELECTABLE)</b>	1200 bps - 921.6 Kbps
<b>DIGI XBEE 3 RECEIVER SENSITIVITY</b>	-103 dBm

### POWER REQUIREMENTS

<b>SUPPLY VOLTAGE</b>	5V from PC USB port
<b>TRANSMIT CURRENT</b>	45 mA
<b>RECEIVE CURRENT</b>	26 mA
<b>POWER-DOWN CURRENT</b>	The Digi XBee 3 USB Adapter should not be put into sleep mode

### GENERAL

<b>FREQUENCY BAND</b>	2.4 GHz ISM
<b>DIMENSIONS (L X W X H)</b>	2.29 in x 0.80 in x 0.44 in (5.83 cm x 2.03 cm x 1.12 cm)
<b>OPERATING TEMPERATURE</b>	-40° C to +85° C
<b>CONNECTOR</b>	USB Type A
<b>ANTENNA OPTIONS</b>	Internal only

### NETWORKING & SECURITY

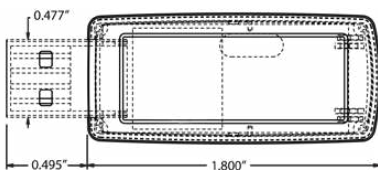
<b>SUPPORTED NETWORK TOPOLOGIES</b>	Zigbee Mesh, Point-to-Point, Point-to-Multipoint, Peer-to-Peer
<b>NUMBER OF CHANNELS (SOFTWARE SELECTABLE)</b>	16
<b>ADDRESSING OPTIONS</b>	PAN, Channel, Address

### REGULATORY APPROVALS

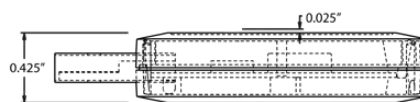
<b>FCC PART 15.247 (USA)</b>	Approved, contains: MCQ-XBEE3
<b>IC (CANADA)</b>	Approved, contains IC: 1846A-XBEE3
<b>EUROPEAN COMPLIANCE</b>	CE Marked

\*Range figure estimates are based on free-air terrain with limited sources of interference. Actual range will vary based on transmitting power, orientation of transmitter and receiver, height of transmitting antenna, height of receiving antenna, weather conditions, interference sources in the area, and terrain between receiver and transmitter, including indoor and outdoor structures such as walls, trees, buildings, hills, and mountains.

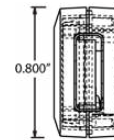
#### DIGI XBEE 3 USB ADAPTER TOP



#### DIGI XBEE 3 USB ADAPTER SIDE



#### DIGI XBEE 3 USB ADAPTER CONNECTOR



## PART NUMBERS

## DESCRIPTION

<b>XU3-A11</b>	Digi XBee 3 USB Adapter 802.15.4, US, Canada and EMEA
----------------	---

**DIGI SERVICE AND SUPPORT** / You can purchase with confidence knowing that Digi is always available to serve you with expert technical support and our industry leading warranty. For detailed information visit [www.digi.com/support](http://www.digi.com/support).

© 1996-2019 Digi International Inc. All rights reserved.  
All trademarks are the property of their respective owners.

91004405  
A3/618

**DIGI INTERNATIONAL WORLDWIDE HQ**  
877-912-3444 / 952-912-3444 / [www.digi.com](http://www.digi.com)

**DIGI INTERNATIONAL GERMANY**  
+49-89-540-428-0

**DIGI INTERNATIONAL JAPAN**  
+81-3-5428-0261 / [www.digi-intl.co.jp](http://www.digi-intl.co.jp)

**DIGI INTERNATIONAL SINGAPORE**  
+65-6213-5380

**DIGI INTERNATIONAL CHINA**  
+86-21-50492199 / [www.digi.com.cn](http://www.digi.com.cn)

