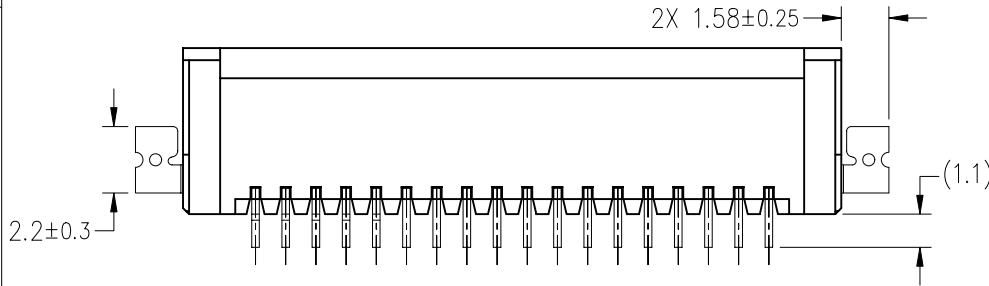


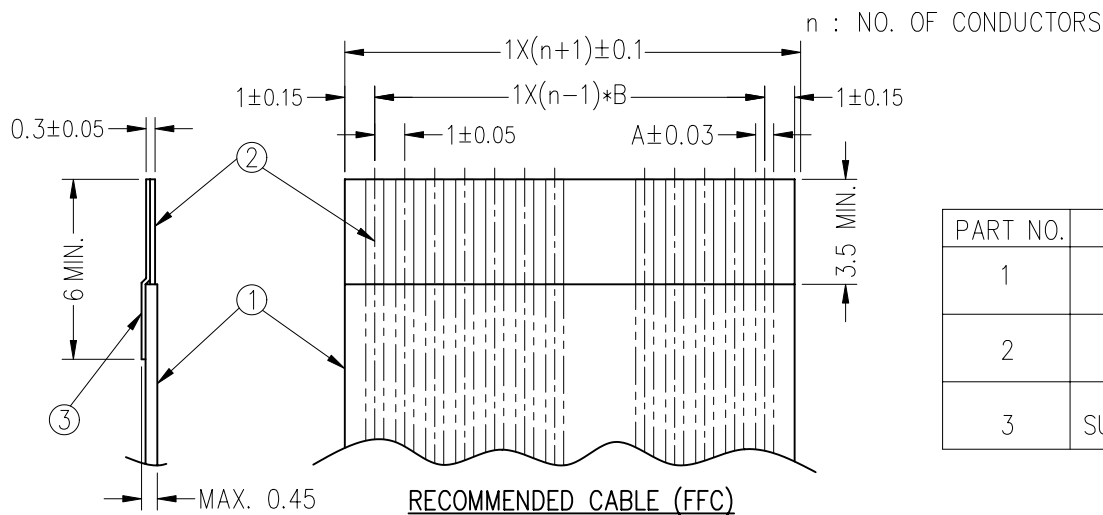
(FLATNESS OF CONTACT TERMINAL AND MOUNTING PLATE)
 MISALIGNMENT OF SOLDER TAIL AND FITTING NAIL FROM DATUM E
 : UPPER DIRECTION .10 MAX. , LOWER DIRECTION 0.15 MAX.
 * <<ALTERNATE CORE AND RIB CONSTRUCTION, NON-FUNCTION,
 AND OR FOR PLASTIC MOLDING PROCESS PURPOSE>>

RECOMMENDED P.C BOARD
 PATTERN DIMENSION. (REF.)
 (MOUNTING AREA)

RECOMMENDED SOLDER PASTE
 THICK 0.15mm [.006"] MIN.



mat'l. code				tolerances unless otherwise specified			projection	product family		
								FFC/FPC		
ltr	ecn no	dr	date	angles	linear	.XX±.20	mm	title		
A	S07-0203	SLLIM	070615					1mm SPACING SMT FFC/FPC CONNECTOR		
B	S07-0450	SLLIM	071226	X±2"			scale 4:1	dwg no		
C	S08-0180	SLLIM	080819					sheet 1 of 6		
								size		
				dr	SLLIM	060907	10073872			
				enr	SLLIM	060907	A4			
				chr	SLLIM	060907	type			
				appd	JOEY NG	060908	Product Customer Drawing			
sheet index		revision	sheet	C	C	C	C	C	C	C
		1	2	3	4	5	6			



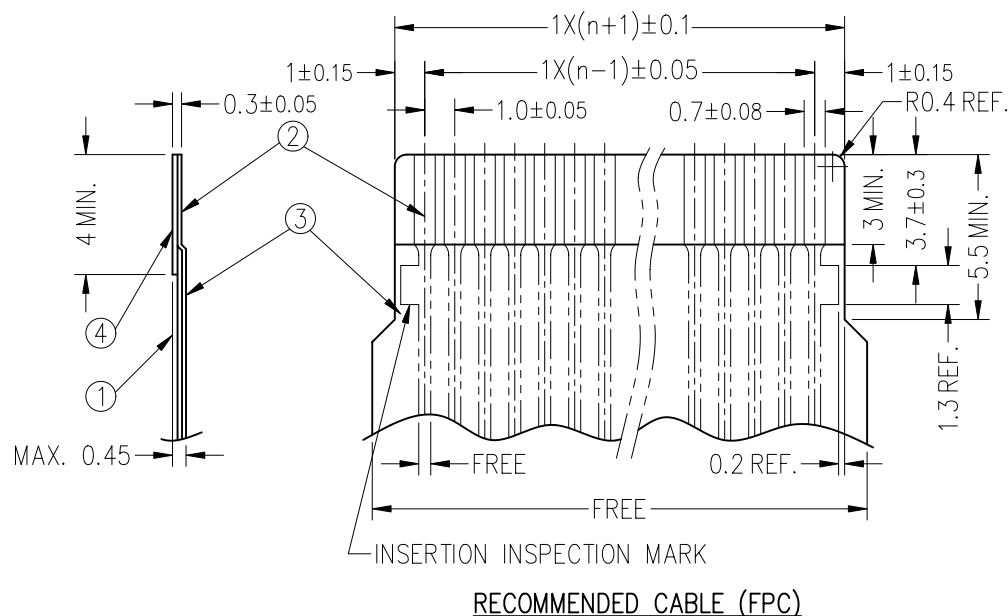
(NOTE C)	DIMENSION	TOLERANCE
	A	B
1	0.7	0.1
2	0.6	0.07

RECOMMENDED CABLE (FFC)

PART NO.	DESCRIPTION	MATERIAL	NOTE
1	INSULATOR	FLAME RESISTING POLYESTER OR EQUIVALENT	-----
2	CONDUCTOR	COPPER FOIL	PLATING: TIN OR SOLDER 1um MIN.
3	SUPPORTING TAPE	FLAME RESISTING POLYESTER OR EQUIVALENT	-----

NOTES:

- A.) NO BURR AT EACH PORION.
- B.) NO PEELING IN COMMON USE.
- C.) BOTH COMBINATION IS ALLOWED.

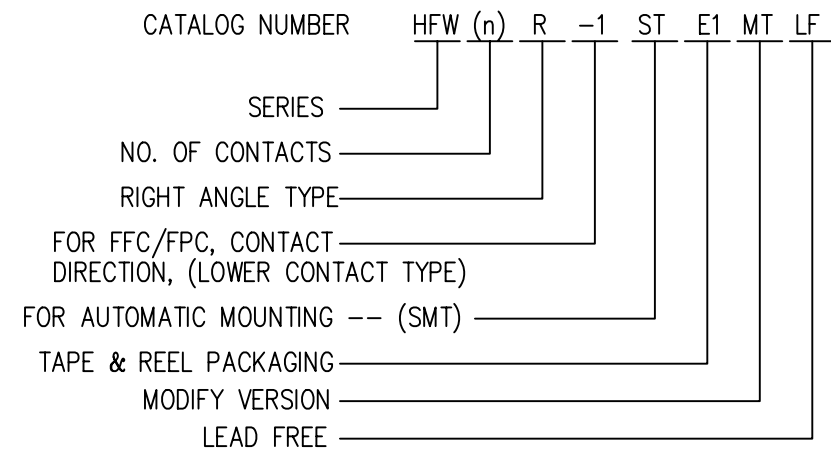


RECOMMENDED CABLE (FPC)

PART NO.	DESCRIPTION	MATERIAL	THICKNESS (um)
1	BASE FILM	POLYIMIDE OR POLYESTER OR EQUIVALENT	25
2	CONDUCTOR	COPPER FOIL (PLATING: SOLDER 1um MIN.)	35
3	OVERLAY	POLYIMIDE OR POLYESTER OR EQUIVALENT	-----
4	SUPPORTING TAPE	POLYIMIDE OR POLYESTER OR EQUIVALENT	188

mat'l. code		tolerances unless otherwise specified		projection	product family FFC/FPC	
ltr	ecn no	dr	date	mm	title	
c					1mm SPACING SMT FPC/FFC CONNECTOR	
		angles	linear	scale 4:1	dwg no	
		$x' \pm 2'$	$.XX \pm .20$		sheet 2 of 6	
		dr	SLLIM	060907		A4
		enr	SLLIM	060907		
		chr	SLLIM	060907		
		appd	JOEY NG	060908		
sheet index	revision sheet					

PART NO.	PARTS NAME	MATERIAL	Q'TY	NOTE
1	HOUSING	HIGH TEMPERATURE THERMOPLASTIC REINFORCED (UL94V-0)	1	COLOR: BLACK
2	CONTACT	PHOSPHOR BRONZE	n	PLATING (LEAD FREE)
3	SMT CLIP	BRASS	2	



30	HFW30R-1STE1MTLF	29	31.14	33.8
29	HFW29R-1STE1MTLF	28	30.14	32.8
28	HFW28R-1STE1MTLF	27	29.14	31.8
27	HFW27R-1STE1MTLF	26	28.14	30.8
26	HFW26R-1STE1MTLF	25	27.14	29.8
25	HFW25R-1STE1MTLF	24	26.14	28.8
24	HFW24R-1STE1MTLF	23	25.14	27.8
23	HFW23R-1STE1MTLF	22	24.13	26.8
22	HFW22R-1STE1MTLF	21	23.14	25.8
21	HFW21R-1STE1MTLF	20	22.14	24.8
20	HFW20R-1STE1MTLF	19	21.14	23.8
19	HFW19R-1STE1MTLF	18	20.14	22.8
18	HFW18R-1STE1MTLF	17	19.14	21.8
17	HFW17R-1STE1MTLF	16	18.14	20.8
16	HFW16R-1STE1MTLF	15	17.14	19.8
15	HFW15R-1STE1MTLF	14	16.14	18.8
14	HFW14R-1STE1MTLF	13	15.14	17.8
13	HFW13R-1STE1MTLF	12	14.14	16.8
12	HFW12R-1STE1MTLF	11	13.14	15.8
11	HFW11R-1STE1MTLF	10	12.14	14.8
10	HFW10R-1STE1MTLF	9	11.14	13.8
9	HFW9R-1STE1MTLF	8	10.14	12.8
8	HFW8R-1STE1MTLF	7	9.14	11.8
7	HFW7R-1STE1MTLF	6	8.14	10.8
6	HFW6R-1STE1MTLF	5	7.14	9.8
5	HFW5R-1STE1MTLF	4	6.14	8.8
4	HFW4R-1STE1MTLF	3	5.14	7.8
CIRCUIT	CATALOG NO.	A	B	C

NOTES

- THIS PRODUCT IS THE CONNECTOR DESIGNED TO TERMINATE FPC/FFC AND COPE WITH AUTOMATIC MOUNTING (SMT).
- MISALIGNMENT OF SOLDER TAIL AND SMT CLIP FROM DATUM E : UPPER DIRECTION 0.10 MAX. , LOWER DIRECTION 0.15 MAX.
- THIS PRODUCT IS LOWER CONTACT TYPE CONNECTOR.
- THIS PRODUCT IS MEETS EUROPEAN UNION DIRECTIVES AND OTHER COUNTRY REGULATIONS AS DESCRIBED IN GS-22-008.
- THE HOUSING WILL WITHSTAND EXPOSURE TO 260°C PEAK TEMPERATURE FOR 10 SECONDS IN A REFLOW SOLDERING OVEN.
- THIS PRODUCT IS LOWER CONTACT TYPE CONNECTOR.
- THIS CATALOG NO. INDICATES PLASTIC TAPE PACKAGED CONNECTOR.

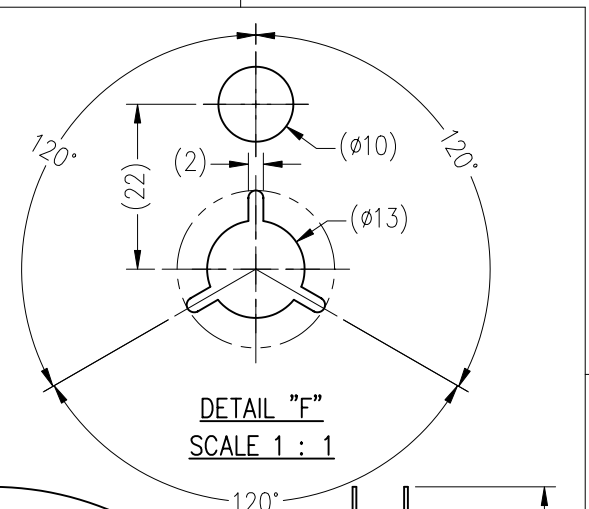
mat'l. code		tolerances unless otherwise specified		projection	product family	
ltr	ecn no	dr	date		FFC/FPC	
c					mm	title
				linear	1mm SPACING SMT	
				angles	FPC/FFC CONNECTOR	
				x±2'	scale 4:1	
				dr	SLLIM	060907
				enr	SLLIM	060907
				chr	SLLIM	060907
				appd	JOEY NG	060908
sheet index	revision sheet					



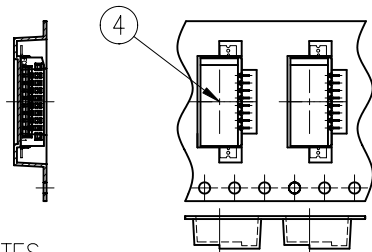
FCIconnect.com

Copyright FCI

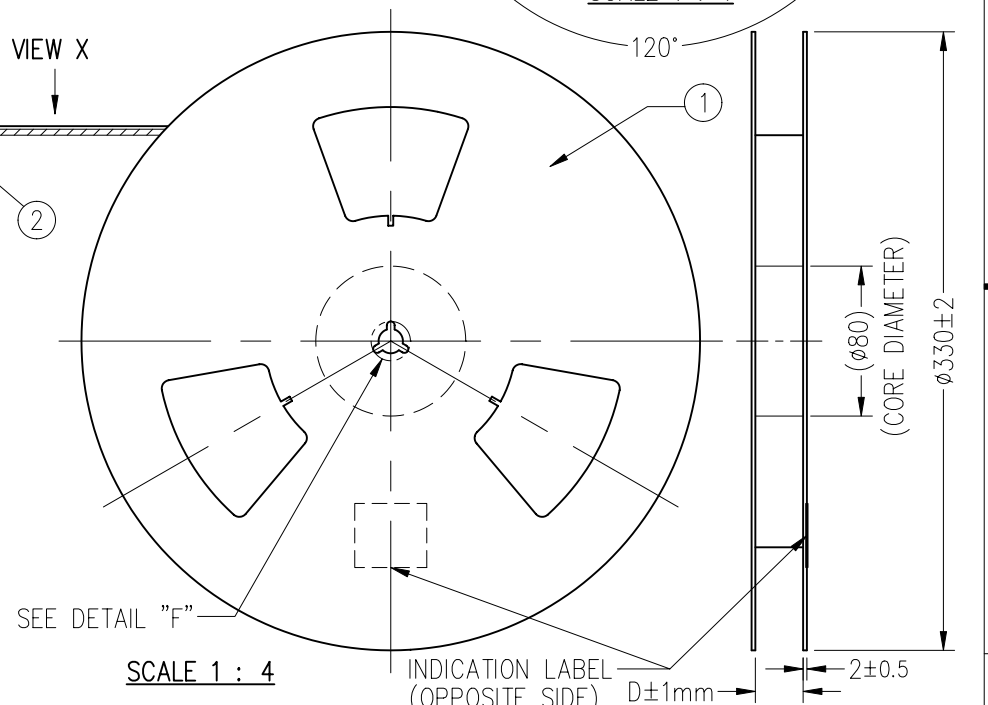
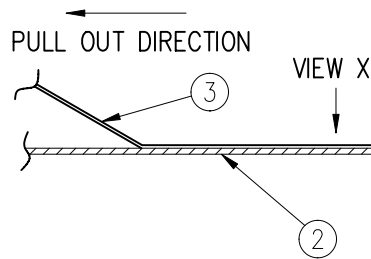
P/N:	PARTS NAME	CATALOG NO.	MATERIAL	QUANTITY	NOTE
①	REEL	-----	POLYSTYRENE (PS) <RECYCLE MATERIAL CONTAINED>	01	COLOR: BLACK
②	PLASTIC (EMBOSSED) CARRIER TAPE	-----	POLYSTYRENE (0.4mm Thick)	-----	COLOR: (CLEAR) TRANSPARENCY
③	COVER (TOP TAPE)	-----	POLYESTER	-----	COLOR: (CLEAR) TRANSPARENCY
④	CONNECTOR	HFW__R-1STE1MTLF	SEE ATTACHED DRAWING	1,000PCS/REEL	LOWER CONTACT TYPE



UNLESS OTHERWISE SPECIFIED: ± 5 , ANGLE $\pm 5^\circ$
TOLERANCES

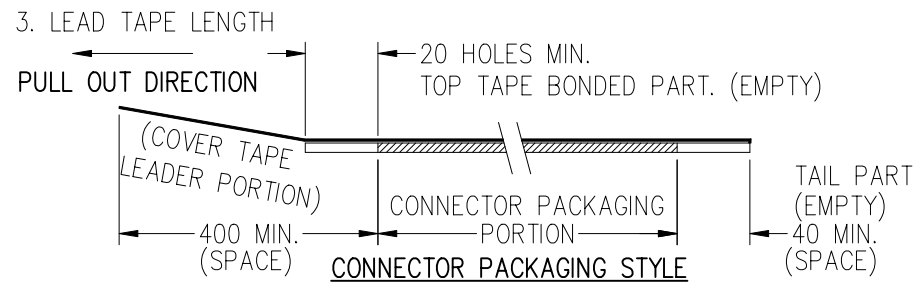


SCALE 4 : 1



NOTES

- THIS IS PLASTIC TAPE PACKAGED CONNECTOR DESIGNED TO TERMINATE FPC/FFC AND COPEs WITH AUTOMATIC MOUNTING (SMT).
- SEE JIS C 0806 (PACKING OF ELECTRONICS COMPONENTS ON CONTINUOUS TAPES, SURFACE MOUNT DEVICES) FOR SHAPE AND DIMENSIONS OF PLASTIC (EMBOSSED) TAPE AND REEL.
- LEAD TAPE LENGTH

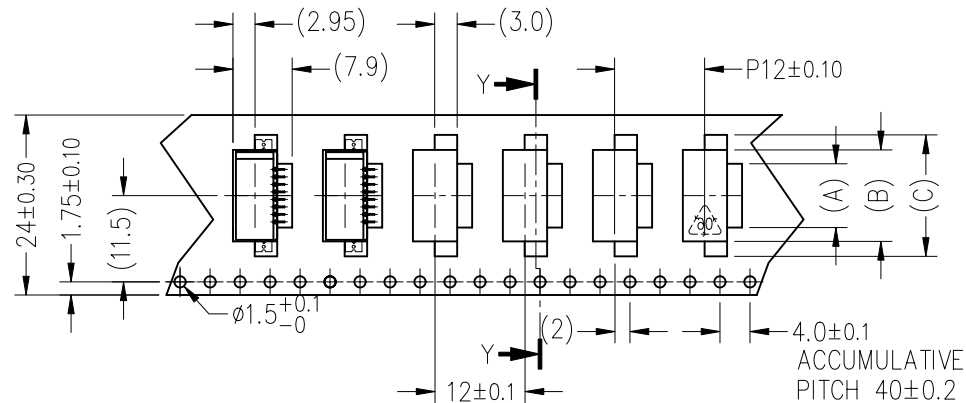
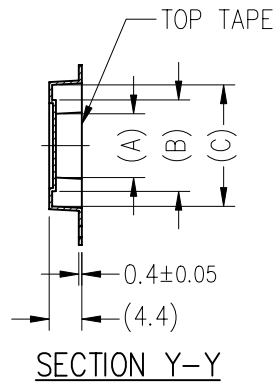


- PEELING OFF FORCE OF TOP TAPE TAPE: $0.1N \sim 0.7N$ ($10.2gf \sim 71.4gf$) (PEELING DIRECTION AS SHOWN IN FOLLOWING FIG.) THIS REQUIREMENT SHOULD BE APPLIED AT SHIPMENT. PEEL OFF SHOULD NOT BE ALLOWED, DURING TRANSPORTATION.

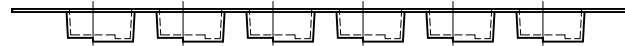


- $D \pm 1mm$ DIMENSION IS PORTION OF THE CORE.

mat'l. code		tolerances unless otherwise specified		projection	product family	
ltr	ecn no	dr	date	mm	FFC/FPC	
c					angles	title
				linear	1mm SPACING SMT	
				dr	FPC/FFC CONNECTOR	
				enr	dwg no	
				chr	sheet 4 of 6	
				appd	size	
					A4	
sheet index		revision sheet		type		Product Customer Drawing



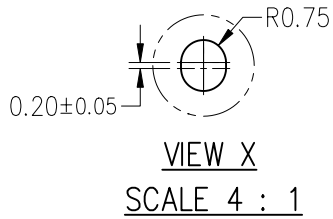
PULL OUT DIRECTION



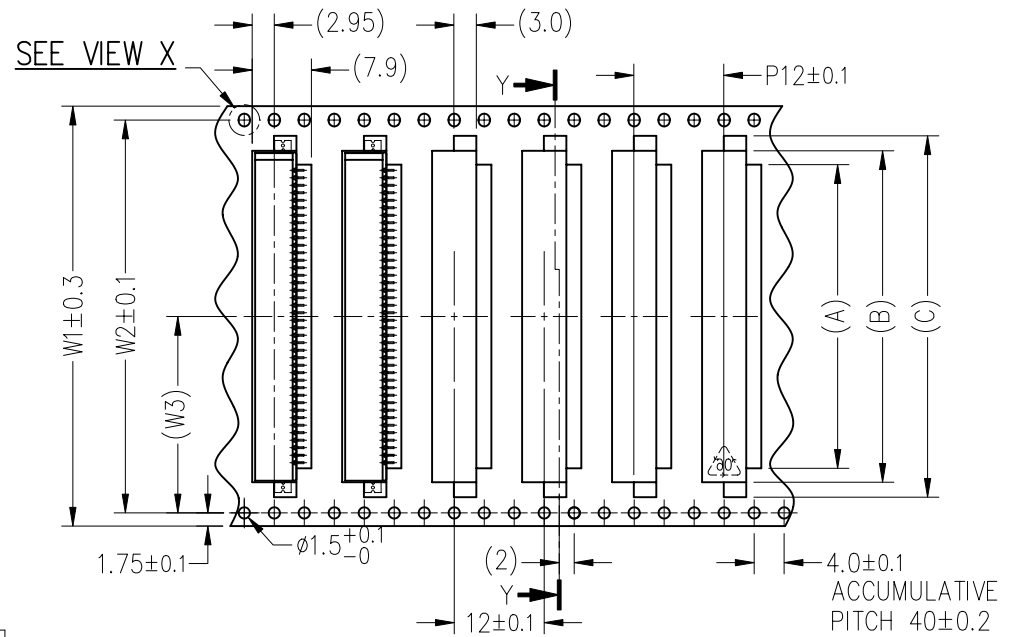
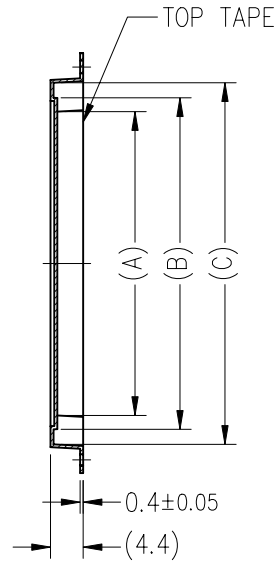
24mm WIDTH CARRIER TAPE

10	HFW10R-1STE1MTLF	10.5	14.2	18.2	25.5	24
9	HFW9R-1STE1MTLF	9.5	13.2	17.2		
8	HFW8R-1STE1MTLF	8.5	12.2	16.2		
7	HFW7R-1STE1MTLF	7.5	11.2	15.5		
6	HFW6R-1STE1MTLF	6.5	10.2	14.2		
5	HFW5R-1STE1MTLF	5.5	9.2	13.2		
4	HFW4R-1STE1MTLF	4.5	8.2	12.2		
CIRCUIT	CATALOG NO.	(A)	(B)	(C)	D±1mm REEL CORE	CARRIER TAPE WIDTH

mat'l. code				tolerances unless otherwise specified		projection	product family	
l	tr	ecn no	dr			mm	FFC/FPC	
c				angles	linear		title	
				x'±2'	.XX±.20	1mm SPACING SMT		
				dr	SLLIM	FPC/FFC CONNECTOR		
				enr	SLLIM	dwg no		
				chr	SLLIM	sheet 5 of 6		
				appd	JOEY NG	size		
						10073872		
						A4		
						type Product Customer Drawing		
sheet index	revision sheet							



SECTION Y-Y



32mm, 44mm, & 56mm WIDTH CARRIER TAPE

30	HFW30R-1STE1MTLF	30.5	34.2	38.2	57.5	56	52.4	26.2
29	HFW29R-1STE1MTLF	29.5	33.2	37.2				
28	HFW28R-1STE1MTLF	28.5	32.2	36.2				
27	HFW27R-1STE1MTLF	27.5	31.2	35.2	45.5	44	40.4	20.2
26	HFW26R-1STE1MTLF	26.5	30.2	34.2				
25	HFW25R-1STE1MTLF	25.5	29.2	33.2				
24	HFW24R-1STE1MTLF	24.5	28.2	32.2				
23	HFW23R-1STE1MTLF	23.5	27.2	31.2				
22	HFW22R-1STE1MTLF	22.2	26.2	30.2				
21	HFW21R-1STE1MTLF	21.5	25.2	29.2	33.5	32	28.4	14.2
20	HFW20R-1STE1MTLF	20.5	24.2	28.2				
19	HFW19R-1STE1MTLF	19.5	23.2	27.2				
18	HFW18R-1STE1MTLF	18.5	22.2	26.2				
17	HFW17R-1STE1MTLF	17.5	21.2	25.2				
16	HFW16R-1STE1MTLF	16.5	20.2	24.2	D±1mm	W1	W2	(W3)
15	HFW15R-1STE1MTLF	15.5	19.2	23.2				
14	HFW14R-1STE1MTLF	14.5	18.2	22.2				
13	HFW13R-1STE1MTLF	13.5	17.2	21.2				
12	HFW12R-1STE1MTLF	12.5	16.2	20.2	REEL CORE	CARRIER TAPE		
11	HFW11R-1STE1MTLF	11.5	15.2	19.2				
CIRCUIT	CATALOG NO.	(A)	(B)	(C)				

mat'l. code				tolerances unless otherwise specified		projection	product family			
l	tr	ecn no	dr	date		mm	FFC/FPC			
c				angles	linear		title			
				x'±2'		scale 4:1	1mm SPACING SMT			
				dr	SLLIM		060907	FPC/FFC CONNECTOR		
				enr	SLLIM	060907	dwg no		sheet 6 of 6	size
				chr	SLLIM	060907	10073872		A4	
				appd	JOEY NG	060908	type		Product	Customer Drawing
sheet index		revision sheet								