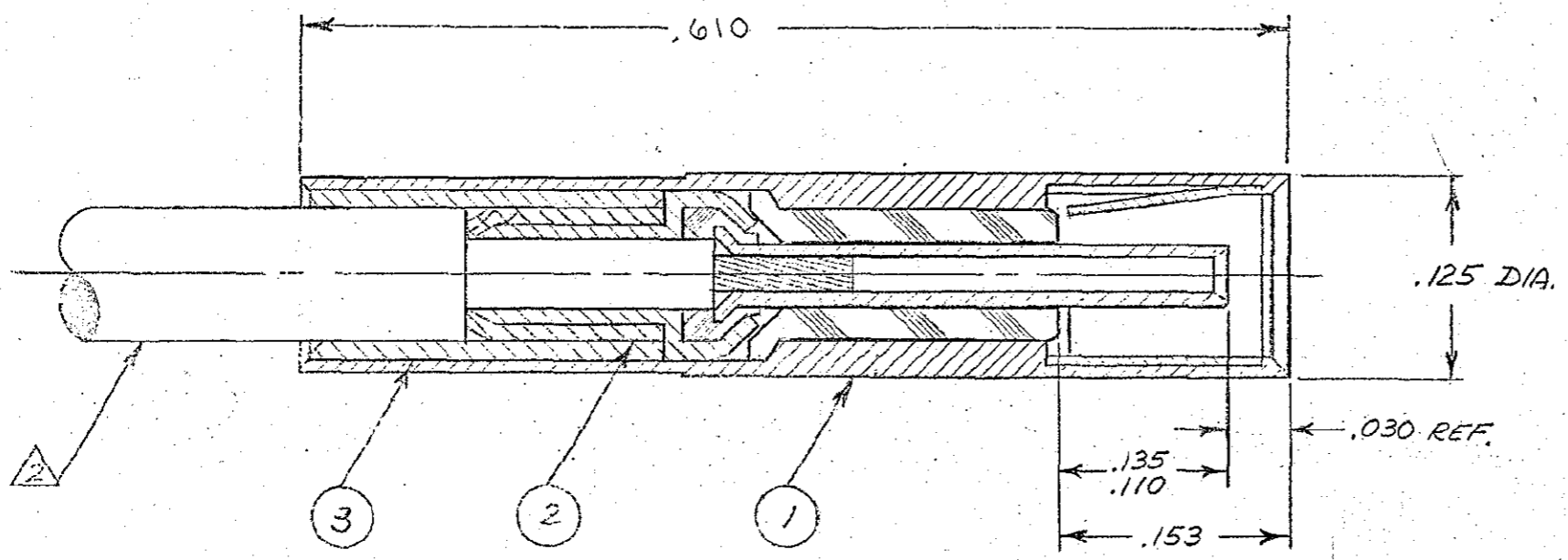


These drawings and specifications are the property of Microdot Inc. and shall not be divulged, reproduced or copied, or used as the basis for the manufacture or sale of any article without written permission of Microdot Inc.



1	014-0004-0002	CRIMP SLEEVE	COPPER ALLOY	3
1	014-1219-0001	CRIMP SLEEVE SUB ASSY.		2
1	014-1196-0001	HOUSING SUB-ASSY		1
QTY	PART NO.	NOMENCLATURE	MAT'L & SPEC	ITEM

- 5. USE MICRODOT TOOL #010-0150-0000 TO CRIMP CENTER COND. & MALCO TOOL 010-0132-0000 TO CRIMP REAR OF HOUSING.
- 4. SEE RF-ASMB-15 FOR CABLE ASSEMBLY INSTRUCTIONS.
- 3. MATES WITH ALL LEPRA/CON 141- SLIDE-ON SERIES JACKS & RECEPTACLES.
- 2. CABLE ACCEPTANCE DIMENSIONS-CENTER COND., .012 NOM; DIELECTRIC, .040 MAX; JACKET, .081 MAX.
- 1. ALL METALLIC PARTS ARE GOLD PLATED PER MIL-G-45204, TYPE II, GRADE C, CLASS I.

NOTES: UNLESS OTHERWISE SPECIFIED

C	20634	REDESIGNED & REDRAWN	mf	5/16	1966	STANDARD TOLERANCES UNLESS OTHERWISE SPECIFIED DEC. # 010 FRAC. # 1/64" ANGLES 25 CONCENTRICITY MAX. DIA. HOLE DIA. 25 SURF. AGE ROUGHNESS MICRO INCHES TOLERANCES TO MIL-STD-208 COMMERCIAL TOLERANCES APPLY TO STOCK DIMENSIONS	<b>MALCO</b> A MICRODOT COMPANY, INC. 306 PASADENA AVE., SO. PASADENA, CALIF.	SURFACE TREATMENT NOTED	REF	<i>Alphex</i>		
D	2458	ITEM 2 WAS 014-1009-0001: DIM CHANGES & ADDITIONS: NOTES 1 & 2 UPDATED: ADDED NOTE 5.	mf	2 1/2	1966				MATERIAL	NOTED	APP	<i>CRG</i>
E	21703	1610 WAS .604	MC	1/4	1966				DRAWN BY	V. METZ (mf)	CHECKED BY	<i>CRG</i>
F	23271	CRIMP TOOL WAS 010-0150-0000	MC	1/4	1966				SCALE	10/1	DATE	6/30/66
G	11921	NOTES 1 & 2 #010-0161-0000	MC	1/4	1966				PROB. CODE	946	WORKING NUMBER	142-1000-0001 L
H	35397	UPDATE REV LETTER	TL	3/18	1966				CODE	CDM		
J	40075	REV. UPDATE	TL	3/28	1966							
K	40466	UPDATE REV LETTER.	TL	4/24	1966							
L	40466	UPDATE REV LETTER.	TL	4/24	1966							

PLUG, SLIDE-ON LEPRA/CON