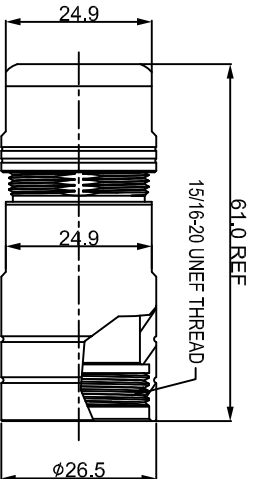
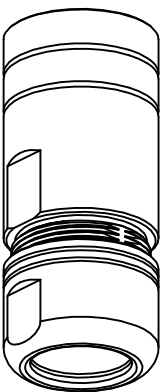
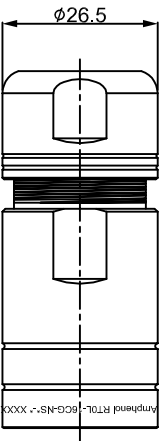
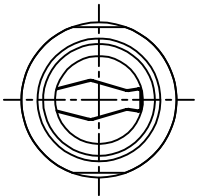


REVISIONS				
REV	ECO	DESCRIPTION	DATE	BY APPR
B1	-	RELEASED DRAWING	NOV/01/2017	FLAN TOMMY



P/N	CABLE O.D.
RT01-16CG-NS1-*	φ10.0-φ14.0mm
RT01-16CG-NS2-*	φ13.5-φ17.0mm

- NOTES : (UNLESS OTHERWISE SPECIFIED)
1. MATERIAL :
- 1.1. NUT : ZINC ALLOY;
 - 1.2. BACK SHELL : ZINC ALLOY;
 - 1.3. O-RING: SILICONE RUBBER.
 - 1.4. CABLE SEAL : EPDM.
 - 1.5 EMI SHIELDING RING : STAINLESS STEEL.
 - 1.6 CLAMP INSERT : THERMOPLASTIC UL94 V-0.
2. ROHS COMPLIANT.
3. ALL DIMENSIONS ARE FOR REFERENCE USE ONLY.
4. SHELL FINISHED:

P/N	** *	SHELL FINISHED
	OMIT	PLATED NICKLE
RT01-16CG-NS*-*	Z	BLACK ZINC
	G	GREEN ZINC

QUANTITY	PART NUMBER	DESCRIPTION	ITEM
		MATERIALS LIST	
		Amphenol	
		Sine Systems - www.amphenol-sine.com	
		44724 Morley Drive	
		Clinch Township, MI 48036	
		ECO-MATE CORD GRIP, SIZE 16.	
		SIZE TYPE DWG NO. REVISION	
		B C- RT01-16CG-NS*-* B1	
		SCALE: NONE SHEET 1 OF 1	
		PROCESS SPECIFICATIONS:	
		UNLESS OTHERWISE SPECIFIED	
		1) All dimensions are in millimeters.	
		2) Tolerances are as follows:	
		1 Pt. DEC 240.30 Fractions .1/164	
		3 Pt. DEC 240.08 Angles .1°	
		3) Note reference =	
		MATERIAL SPECIFICATIONS:	
		CUSTOMER: Tommy	
		APPROVAL: NOV/01/2017	
		TEST SPECIFICATIONS:	
		PERFORMANCE SPECIFICATIONS:	
		THESE SPECIFICATIONS AND PERFORMANCE DATA	
		ARE THE PROPERTY OF AMPHENOL CORPORATION. NO PORTS	
		OF REPRODUCTION ARE PERMITTED. ALL	
		MANUFACTURING VARIATIONS	
		TEXT ASSY:	

TITLE:

ECO-MATE CORD GRIP SIZE 16.

DWG NO.:

RT01-16CG-NS*-*

REV: B1

SH: 1

OF: 1