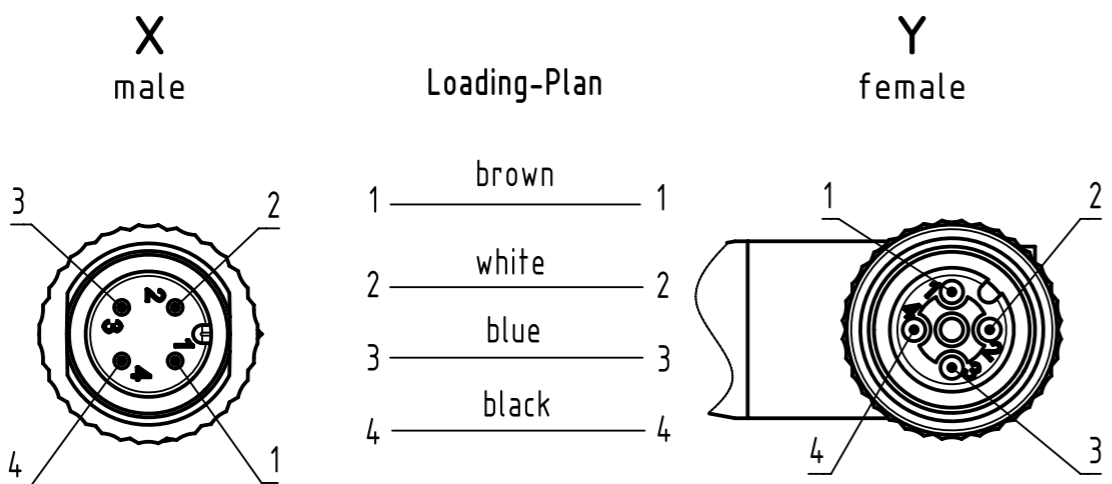
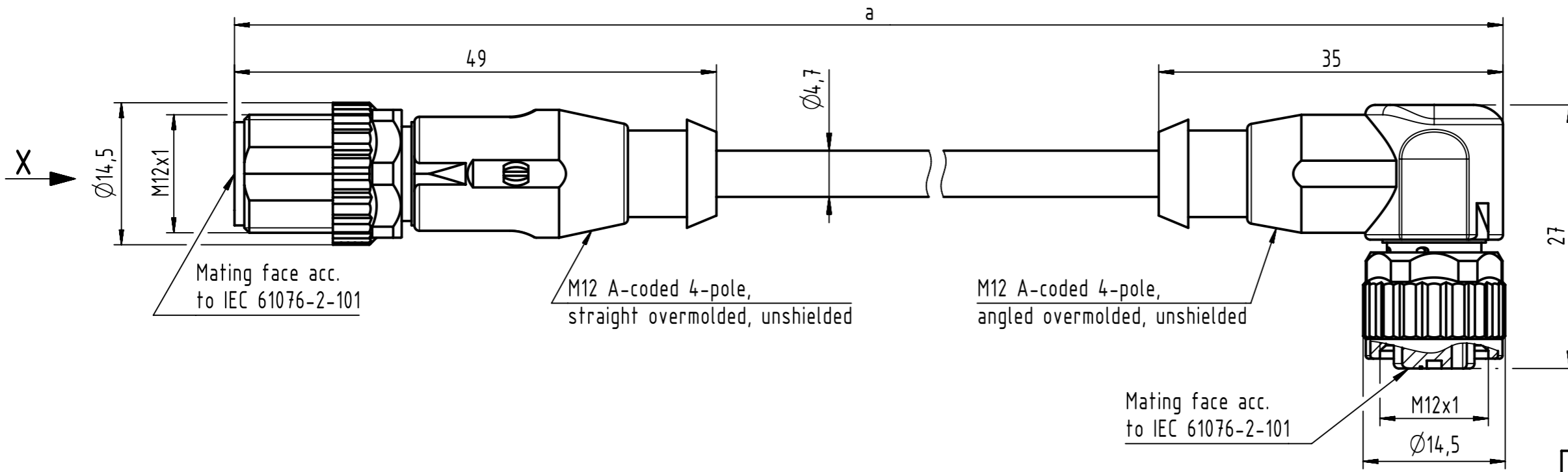


Connector Location A

Connector Location B

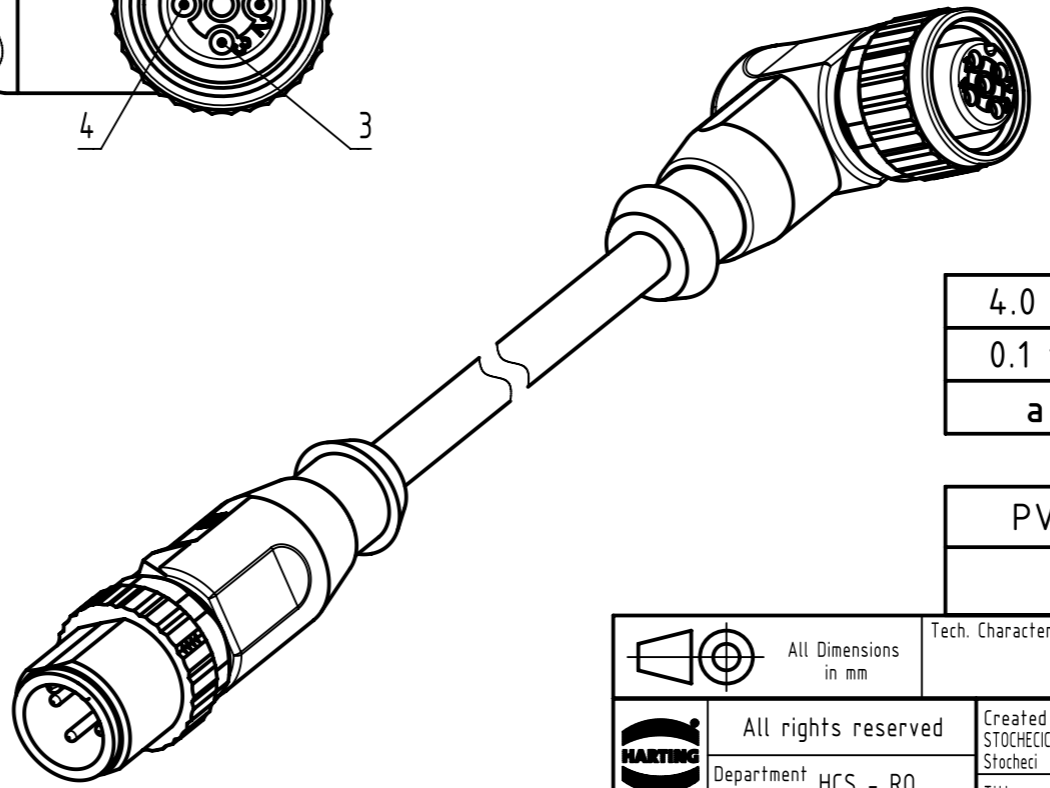


length in "1m" step	40	XXX=400
	39	XXX=390
	.	.
	12	XXX=120
length in "0.1m" step	11	XXX=110
	10	XXX=100
	9.9	XXX=099
	9.8	XXX=098
	.	.
	0.4	XXX=004
	0.3	XXX=003
Step	0.2	XXX=002
	0.1	XXX=001
		XXX

4.0 to 40	±1%
0.1 to 3.9	+0.04
<b>a [m]</b>	<b>Tolerance</b>

PVC grey, 4x0.34mm <sup>2</sup>	21348487484XXX
<b>Type of cable</b>	<b>Part no.</b>

- Protection level: IP65/67  
 - Temperature range: -25°C ... +80°C



All rights reserved Department HCS - RO HARTING Customised Solutions D-32339 Espelkamp	All Dimensions in mm Tech. Character. Free size tol. According to production drawing	Created by STOCEVIC Stoceci	Inspected by COSTEA Costea	Standardisation MUNTEANV Muntean	Date 2018-12-14	State Final Release	Doc-Key / ECM-Nr. 100578701/UGD/009/D 500000144869
	Title <b>M12 Cable Assembly A-cod st/an m/f</b>	Type TB	Number <b>21348487484XXX</b>	Rev. D	Page 1/1		