

This document is the property of Amphenol Corporation and is delivered on the express condition that is not to be disclosed, reproduced or used, in whole or in part, for manufacture or sale by anyone other than Amphenol Corporation without its prior consent, and that no right is granted to disclose or to use any information in this document.

The marking on this product doesn't contain environmental hazardous materials per Material Specification SS-00259 for Sony GP compliant or per directive 2011/65/EU for RoHS compliant.



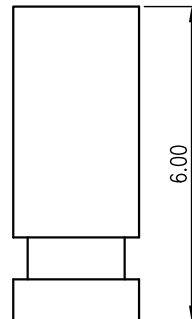
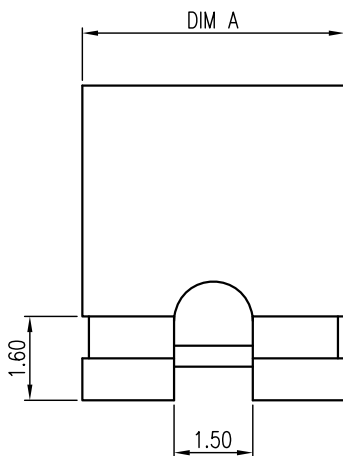
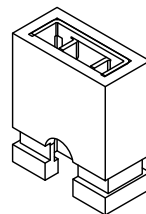
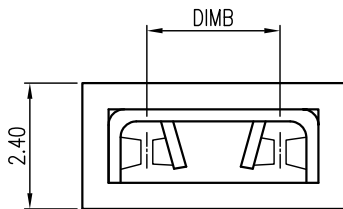
ORIGINAL



REVISIONS				
SYM	ECN No.	DESCRIPTION	DATE	APPROVED
A	NE-17190	APPROVED REVISION	07/19/2017	Roger Tsai

NOTES:

- MATERIAL:
HOUSING: TEMPERATURE THERMAL PLASTIC, NYLON6T, UL94V-0,
COLOR: OPTION.
TERMINAL: COPPER ALLOY.
- FINISH:
TERMINAL:
CONTACT AREA: SELECTED GOLD OR MATTE TIN PLATING;
SOLDERING AREA: GOLD FLASH OR TIN PLATING 100 u" THICKNESS MIN.;
UNDER PLATING: NICKEL PLATING 50 u" THICKNESS MIN. OVERALL.
- PACKING IS PER AMTA PACKING SPECIFICATION PKS-0001.
- THIS PRODUCT DOESN'T CONTAIN ENVIRONMENTAL HAZARDOUS PER DIRECTIVE 2011/65/EU FOR RoHS COMPLIANT.
- PRODUCT SPECIFICATION REFER TO : PS-7620.

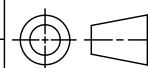


PART NO. G8901102 X XX X DEU

COLOR OPTION	X	XX	X	DEU	CONTACT FINISH
0: BLACK					0: GOLD FLASH
1: BLUE					1: 30u" GOLD
					3: MATTE TIN 100u"
NO. OF POSITIONS					4: 10u" GOLD

TOLERANCE		APPROVALS		DATE	TITLE		Amphenol®		
X.		DRAWN	Aqua Chou	07/19/2017	G890 SERIES, MINI JUMPER		Amphenol Corporation		
X.X	±0.30	CHECKED	Karen Su	07/19/2017	2.54 PITCH, STRAIGHT		Amphenol Taiwan Corporation		
X.XX	±0.20	APPROVED	Roger Tsai	07/19/2017	OPEN TYPE		PART No.	G8901102XXXXDEU	
X.XXX	±0.10	DWG TYPE	CUST DWG	PROJECT CODE	OTHER	UNIT	mm	SIZE	A3
ANGULAR	±1°					SCALE	NA	SHEET	1 OF 2
UNLESS OTHERWISE SPECIFIED								DWG No.	G8901102XXXXDEU
								REV.	A

G890 1102X 02X DEU	2	5.00	2.54
PART NUMBER	NO. OF POS.	DIM. A	DIM. B



This document is the property of Amphenol Corporation and is delivered on the express condition that is not to be disclosed, reproduced or used, in whole or in part, for manufacture or sale by anyone other than Amphenol Corporation without its prior consent, and that no right is granted to disclose or to use any information in this document.

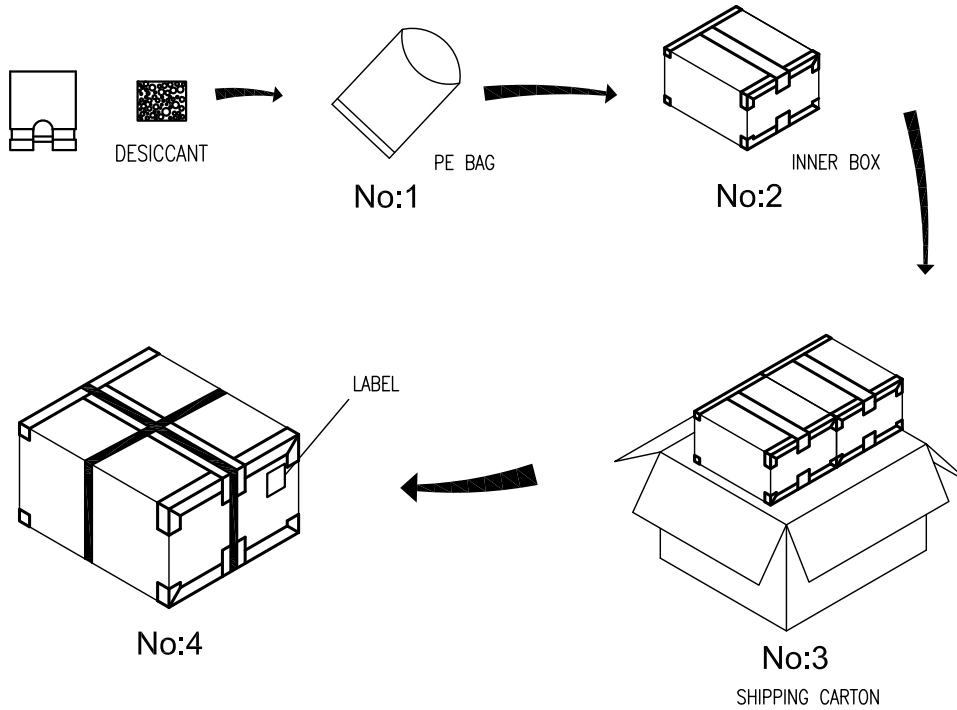
The marking on this product doesn't contain environmental hazardous materials per Material Specification SS-00259 for Sony GP compliant or per directive 2011/65/EU for RoHS compliant.



ORIGINAL



REVISIONS				
SYM	ECN No.	DESCRIPTION	DATE	APPROVED
A	NE-17190	APPROVED REVISION	07/19/2017	Roger Tsai



NOTES:

1. INNER BOX SIZE : 215 X 175 X 150 mm
2. SHIPPING CARTON SIZE : 370 X 230 X 175 mm

02	2000	10	40,000
POS.	PCS/ BAG	BAG/ INNER BOX	QUANTITY (PCS)

TOLERANCE	APPROVALS	DATE	TITLE		PART No.		
X. ±0.30	<small>DRAWN</small> Aqua Chou	07/19/2017	G890 SERIES, MINI JUMPER 2.54 PITCH, STRAIGHT OPEN TYPE		Amphenol® Amphenol Corporation Amphenol Taiwan Corporation		
X.XX ±0.20	<small>CHECKED</small> Karen Su	07/19/2017					
X.XXX ±0.10	<small>APPROVED</small> Roger Tsai	07/19/2017					
ANGULAR ±1°	<small>DWG TYPE</small> CUST DWG	<small>PROJECT CODE</small> OTHER		<small>UNIT</small> mm	<small>SIZE</small> A3	<small>PART No.</small> G8901102XXXXDEU	
UNLESS OTHERWISE SPECIFIED				<small>SCALE</small> NA	<small>SHEET</small> 2 OF 2	<small>DWG No.</small> G8901102XXXXDEU	<small>REV.</small> A