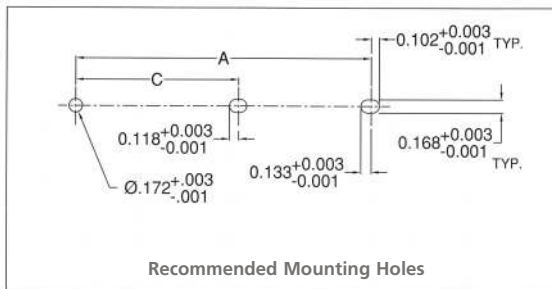
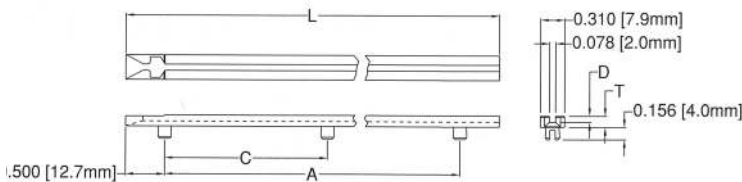


TEMP-O-GIDE™

Flame Retardant Card Guides for 1/16th PCBs

- 25 Standard Lengths from 2"- 14" in 1/2" increments
- Precision Molded for rigidity, strength and heat resistance from flame retardant 94V-O UL rated materials
- Stainless Steel Conductive Inserts available for all lengths (see page 13)



Rigid, strong and economical, TEMP-O-GIDES provide the design flexibility and installed reliability that your most demanding products require. Retention is firm and there are no special tools or fixtures required for installation. Locking ejectors can be used for positive PCB retention and insertion/extraction ease (see page 12-14 for details).

Mounting Information:

Snap-in metal plates: 0.047" - 0.090" (1.2mm - 2.3mm) thick
 Hole Size: 0.172" (4.4mm) diameter + 0.003" (0.08mm) - 0.002" (0.06mm) x 0.232" (5.9mm) 1/64th drill
 Center - 0.220" x 0.168" + 0.003" - 0.001"
 Rear - 0.235" x 0.168" + 0.003" - 0.001"

Material Specifications:

UL Rated 94V-O, Rust colored, Flame Retardant 6/6 Nylon
 Oxygen Index: +28%
 UL File #E84658

Application Notes:

Slotting or elongating of the second and third mounting hole is recommended to allow for length variations and to provide for easier assembly.

Prolonged pre-assembly exposure to high humidity can cause molded Nylon components to "grow" out of tolerance. Storage in a cool dry place is recommended. Open sealed vapor barrier bags at the time of production to assure optimum shelf life.

Temp-O-Gide 2" thru 8" Lengths

Part No.	L ±.062 (1.6)	A ±.032 (.81)
FR-200	1.969 (50.0)	.984 (25.0)
FR-250	2.469 (62.7)	
FR-300	2.969 (75.4)	1.484 (37.7)
FR-350	3.469 (88.1)	
FR-400	3.939 (100.0)	
FR-450	4.438 (112.7)	2.969 (75.4)
FR-500	4.938 (125.4)	
FR-550	5.438 (138.1)	
FR-600	5.906 (150.0)	4.953 (125.8)
FR-650	6.406 (162.7)	
FR-700	6.875 (174.6)	
FR-750	7.375 (187.3)	5.969 (151.6)
FR-800	7.875 (200.0)	

Temp-O-Gide 8-1/2" thru 14" Lengths

Part No.	L ±.062 (1.6)	A +.032 (.81) -.047 (1.2)	C +.016 (.41) -.032 (.81)	D ±.005 (.13)	T ±.007 (.18)"
FR-850	8.375 (212.7)				
FR-900	8.875 (225.4)	7.469 (189.7)	3.735 (94.9)	.078 (2.0)	.141 (3.6)
FR-950	9.375 (238.1)				
FR-1000	9.875 (250.8)				
FR-1050	10.375 (263.5)	8.938 (227.0)	4.469 (113.5)	.078 (2.0)	.141 (3.6)
FR-1100	10.875 (276.2)				
FR-1150	11.344 (288.1)				
FR-1200	11.844 (300.8)	10.406 (264.3)	5.203 (132.2)	.093 (2.4)	.156 (4.0)
FR-1250	12.344 (313.5)				
FR-1300	12.812 (325.4)				
FR-1350	13.312 (338.1)	11.906 (302.4)	5.953 (151.2)	.093 (2.4)	.156 (4.0)
FR-1400	13.812 (350.8)				