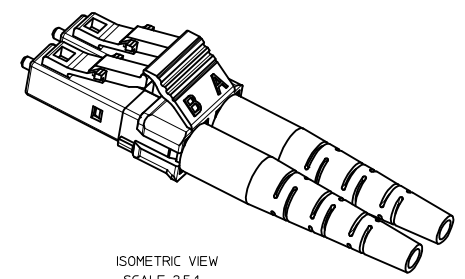
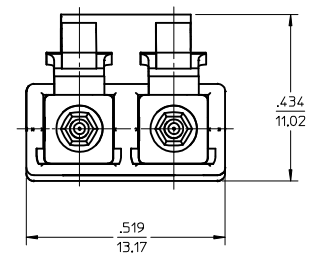
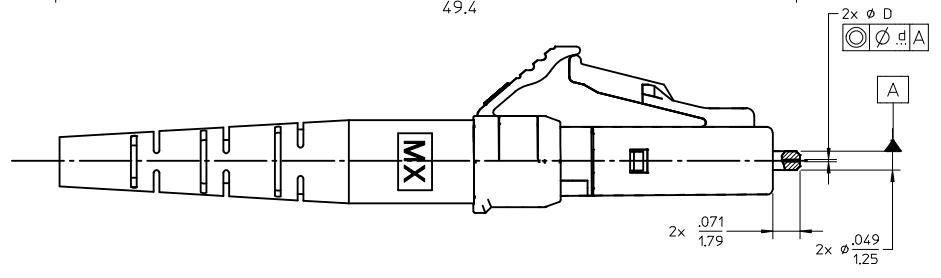
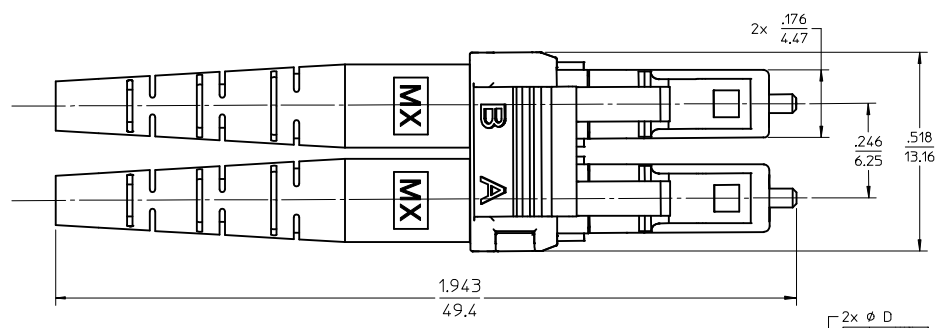


CONNECTOR P/N	ØD (Hm)	Ød (Hm)	DUPLEX CLIP COLOR	DUPLEX CLIP W/LATCH COLOR	BOOT COLOR	CABLE TYPE
106025-3800	127.0	3.0	BEIGE	BEIGE	WHITE	MULTIMODE
106025-3810					BLUE	
106025-3820					YELLOW	
106025-3830					BLACK	
106025-3840	126.0	1.0			BEIGE	
106025-5800					WHITE	
106025-5810					BLUE	
106025-5820					YELLOW	
106025-5830	125.5	1.0	BLUE	BLUE	BLACK	SINGLE MODE
106025-5840					BEIGE	
106025-2900					WHITE	
106025-2910					BLACK	
106025-2920	125.5	0.5			BLUE	
106025-2930					YELLOW	
106025-2940					BEIGE	
106090-7000					WHITE	
106090-7010	125.5	0.5			BLACK	
106090-7020					BLUE	
106090-7030					YELLOW	
106090-7040					BEIGE	



ISOMETRIC VIEW  
SCALE 2.5:1



- NOTES:
- ALL DIMENSIONS ARE FOR REFERENCE ONLY.
  - DUPLEX CLIPS AND BOOTS SHOULD BE ASSEMBLED AFTER POLISHING OPERATION.
  - DUST CAPS ARE NOT SHOWN

ENTER DESCRIPTION EC NO: MF2013-0244 DRW/KP/VEZNER 2012/10/29 CHKD: APPR: GUM/JIN 2012/10/31 REV: A1	QUALITY SYMBOLS	GENERAL TOLERANCES (UNLESS SPECIFIED)	DIMENSION STYLE	SCALE	DESIGN UNITS	THIRD ANGLE PROJECTION
	▽=0	mm INCH	IN/MM	4:1	INCH	
	▽=0	4 PLACES ± --- ± ---	DRAWN BY DATE	TITLE		
	▽=0	3 PLACES ± 0.13 ± .005	PGIBL IN 2005/11/14	LC DUPLEX CONNECTOR W/2 PIECE CLIP (2.0 MM CABLE)		
	2 PLACES ± 0.38 ± .015	CHECKED BY DATE	molex			
	1 PLACE ± --- ± ---	APPROVED BY DATE	DOCUMENT NO.			
	0 PLACE ± ±	MATERIAL NO.	SD-106025-XXXX			
	ANGULAR ±1/2°	SEE TABLE	SHEET NO.			
	DRAFT WHERE APPLICABLE MUST REMAIN WITHIN DIMENSIONS	THIS DRAWING CONTAINS INFORMATION THAT IS PROPRIETARY TO MOLEX INCORPORATED AND SHOULD NOT BE USED WITHOUT WRITTEN PERMISSION	1 OF 1			