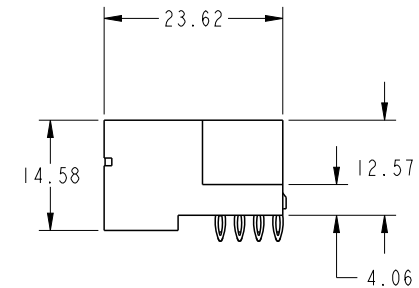
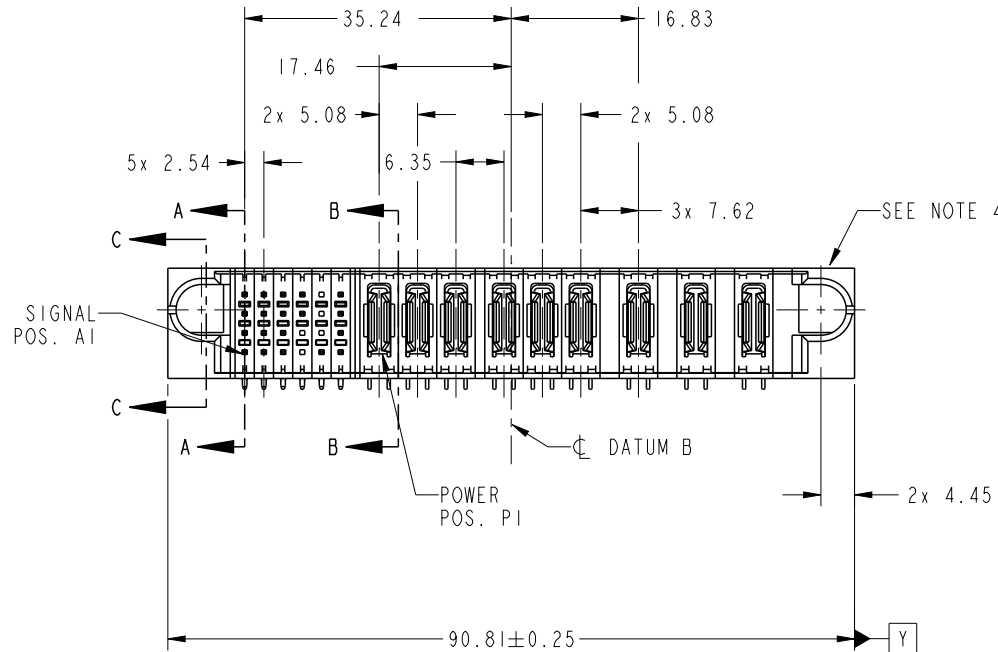


PRODUCT NO.	ROWS	SIGNAL						POWER									E2	
		E1	1	2	3	4	5	6	P1	P2	P3	P4	P5	P6	P7	P8		P9
51939-836NSP-- NOTE 3	D C B A		SD	SD	SD	SD	X	SD	PX	PX	PX	PX	PX	PX	PX	PX	PX	

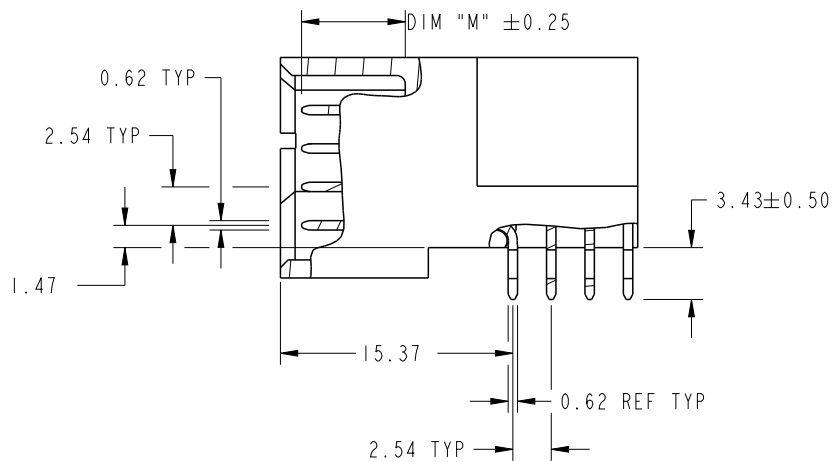


CODE	DIM "M" MATING LENGTH	CONTACT TYPE
SA	[6.86]	SIGNAL
SB	[6.86]	SIGNAL
SC	[6.86]	SIGNAL
SD	[6.86]	SIGNAL
PX	[N/A]	POWER
X	[N/A]	OMITTED

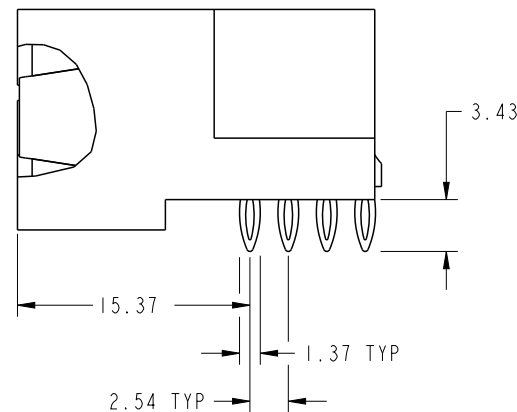
spec ref	*	dr	Ruan MT	2014/02/20	projection	MM	size	A4	scale	1:1	
tolerance std	ASME Y14.5	eng	Ruan MT	2014/02/27		←→	ecn no	-	rel level	Released	
TOLERANCES UNLESS OTHERWISE SPECIFIED		chr	-	-							
surface	✓	appr	Pei-Ming Zheng	2014/02/27	product family	PwrBlade					
ASME Y14.5	linear	0.X	±0.5		title	24S + 9P	dwg no	51939-836NSP	rev	A	
		0.XX	±0.25		www.fci.com	RIGHT ANGLE PRESS FIT HEADER					
	angular	0°	±2°			cat. no.					-

PRODUCT NUMBER

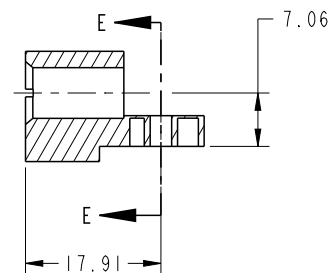
51939-836NSP__
NOTE: 3



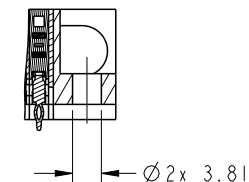
BROKEN-OUT SECTION A-A
SCALE 2:1



BROKEN-OUT SECTION B-B
SCALE 2:1



SECTION C-C

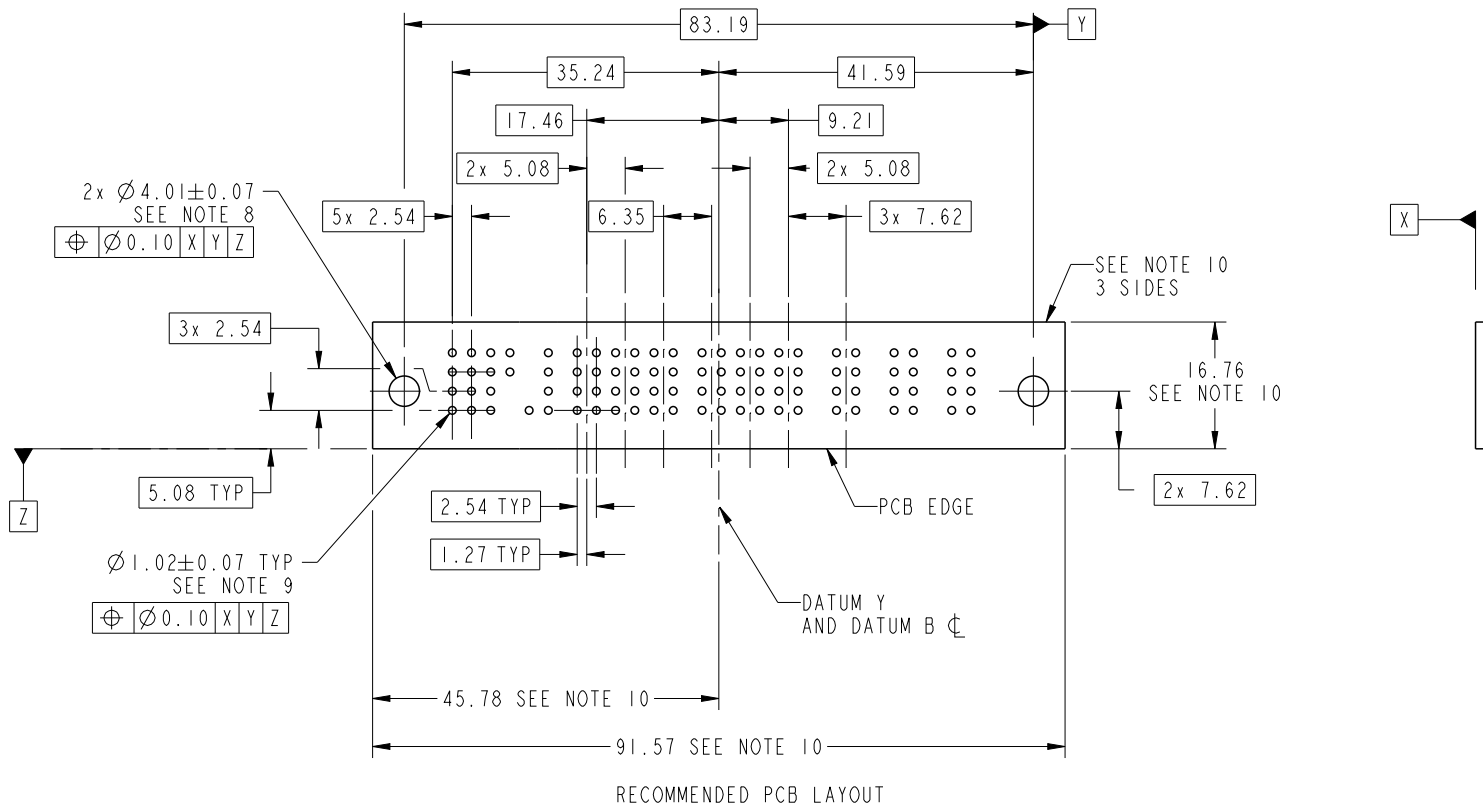


PARTIAL SECTION E-E

dr	Ruan MT	2014/02/20	projection 	MM ←————→	size	A4	scale	1:1
eng	Ruan MT	2014/02/27			ecn no	-		
chr	-	-						
appr	Pei-Ming Zheng	2014/02/27	product family	PwrBlade	rel level	Released		
	title	24S + 9P RIGHT ANGLE PRESS FIT HEADER		dwg no	51939-836NSP		rev	A
www.fci.com	cat. no.	-	Product - Customer Drw			sheet 2 of 4		

PRODUCT NUMBER

51939-836NSP__
NOTE: 3



RECOMMENDED PCB LAYOUT

dr	Ruan MT	2014/02/20	projection 	MM 	size	A4	scale	1:1	
eng	Ruan MT	2014/02/27			ecn no	-			
chr	-	-			rel level	Released			
appr	Pei-Ming Zheng	2014/02/27	product family	PwrBlade					
		title	24S + 9P RIGHT ANGLE PRESS FIT HEADER		dwg no	51939-836NSP		rev	A
www.fci.com		cat. no.	-		Product - Customer Drw			sheet 3 of 4	

PRODUCT NUMBER

51939-836NSP--
NOTE: 3

NOTES:

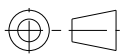
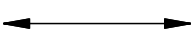

1. DIMENSIONS AND TOLERANCES ARE IN ACCORDANCE WITH ASME Y14.5M, 1994 UNLESS OTHERWISE SPECIFIED.

CONNECTOR NOTES:

- 2. HOUSING MATERIAL: UL 94 V-0 GLASS FILLED HIGH-TEMP THERMOPLASTIC
POWER CONTACT MATERIAL: COPPER ALLOY
SIGNAL PIN MATERIAL: COPPER ALLOY
- 3. SEE ITEM 3 & 4 IN PRINT 10064183 FOR PLATING SPEC OF 51939-836NSP AND 51939-836NSPLF RESPECTIVELY.
- 4. MANUFACTURER'S NAME, DATE CODE AND OPTIONAL P/N TO APPEAR ON THIS SURFACE. THE MARK CAN BE OMITTED IF THERE IS NOT ENOUGH SPACE ON THIS SURFACE.
- 5. PRODUCT SPECIFICATION GS-12-149.
APPLICATION SPECIFICATION BUS-20-067.
- 6. PACKAGED IN TRAYS.

PCB NOTES:

- 7. ALL HOLE DIAMETERS ARE FINISHED HOLE SIZE.
- 8. MOUNTING HOLES, WHERE APPLICABLE, ARE UNPLATED.
- 9. $\varnothing 1.151 \pm 0.025$ DRILLED HOLES PLATED WITH
0.008 MIN SnPb OR Sn OVER 0.03
TO 0.08 Cu PLATING TO ACHIEVE
 $\varnothing 1.02 \pm 0.07$ HOLE.
- 10. CONNECTOR KEEP-OUT ZONE.

dr	Ruan MT	2014/02/20	projection 	MM 	size	A4	scale	1:1
eng	Ruan MT	2014/02/27			ecn no	-		
chr	-	-			product family	PwrBlade	rel level	Released
appr	Pei-Ming Zheng	2014/02/27			title 24S + 9P RIGHT ANGLE PRESS FIT HEADER	dwg no 51939-836NSP	rev A	
www.fci.com		cat. no.	-	Product - Customer Drw		sheet 4 of 4		



Copyright FCI.