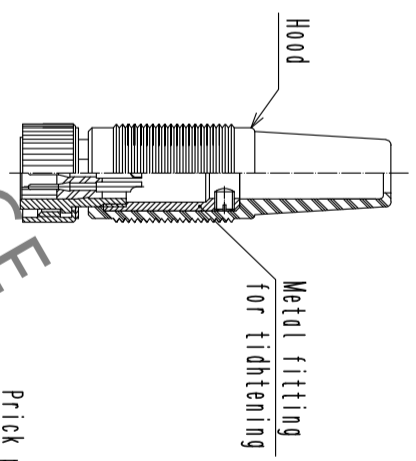


HRS DRAWING FOR REFERENCE

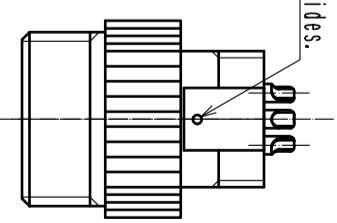
The contact arrangements from the mating face

Appearance of Mating plug connector  
(as an example) (1:1)



Prick punch: 2 positions  
each on 2 sides.

External view of  
only Ref. No. ①, ② and ③.



- Notes
- 1 Applicable metal clammer: SR30-P(CLI103-0286-5-00)
  - 2 The recommended clamp torque of ref. No. ⑤ : 1.5~2N · m.
  - 3 The recommended clamp torque of ref. No. ⑦ : 0.1~0.15N · m.
  - 4 Apply Loctite 243, HENKEL JAPAN or equivalent to the threaded portion of ref. No. ① and ⑦ in order to prevent loosening.
  - 5 Rotation torque resistance of ref. NO. ① and No. ③ are approx. 0.7 N · m. Do not rotate Hood and Metal fitting for tightening with the plug mated condition.
  - 6 Rotation examples of ref. No. ① and ⑤ are shown.
  - 7 Applicable tools  
Clamping tool for SR30-P : SR30-10PE-TC(L150-0001-8-00)
  - 8 The cable pull and twisting strength and other characteristics may differ, depending on the cable structure, please confirm before the use. Also, please confirm the workability in advance, as it may be tight when passing the cable through the part No. ⑥ bushing.

3	Polyacetal	(White)	7	Steel	Nickel plating	JIS B 1117 Ni-PAL-5X3
2	Phosphor bronze	Surface plating : gold plating 0.2μm min. Under plating : Nickel plating 3.2μm min.	6	Chloroprene rubber	(Black)	
1	Brass	Chrome plating	5	Brass	Nickel plating	
NO.	MATERIAL	FINISH . REMARKS	NO.	MATERIAL	FINISH . REMARKS	
UNITS	SCALE	COUNT	DESCRIPTION OF REVISIONS	DESIGNED	CHECKED	DATE
mm	2 : 1	Δ				

<p>HIROSE ELECTRIC CO., LTD.</p>		Approved : TP. KOMATSU Checked : HY. KOBAYASHI Designed : HY. KISHI Drawn : KR. SUZUKI	20221202 20221202 20221202 20221130	DRAWING NO. PART NO. CODE NO.	EDC-005968-32-00 SR30-10JE-6S(32) CL0103-0259-0-32
----------------------------------	--	-------------------------------------------------------------------------------------------------	----------------------------------------------	-------------------------------------	----------------------------------------------------------