

THIS DRAWING IS UNPUBLISHED.

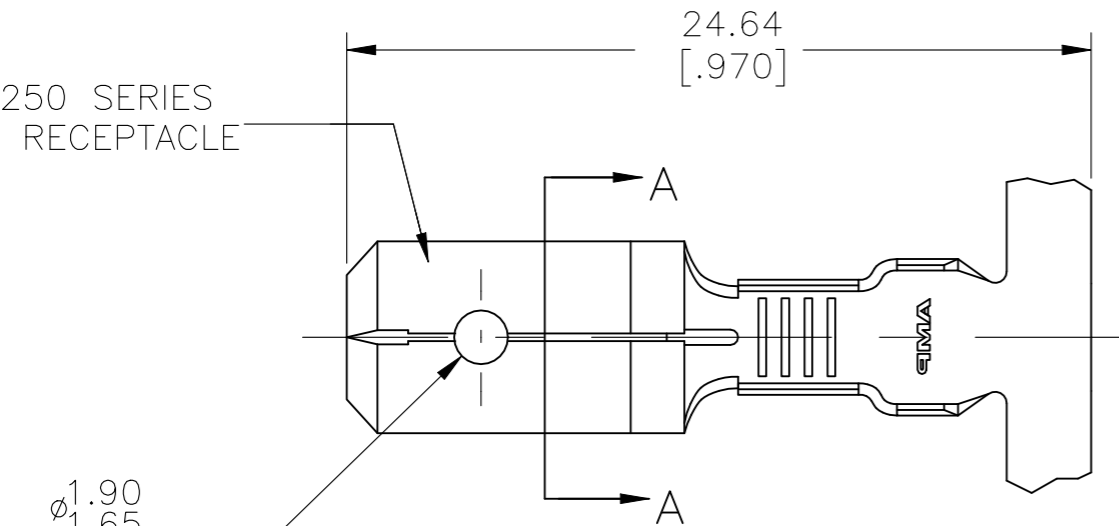
RELEASED FOR PUBLICATION

REVISIONS

© COPYRIGHT - By - ALL RIGHTS RESERVED.

P	LTR	DESCRIPTION	DATE	DWN	APVD
	V3	REVISED PER ECR-21-101176	26MAR2021	SS	EW

FITS .250 SERIES FASTON RECEPTACLE

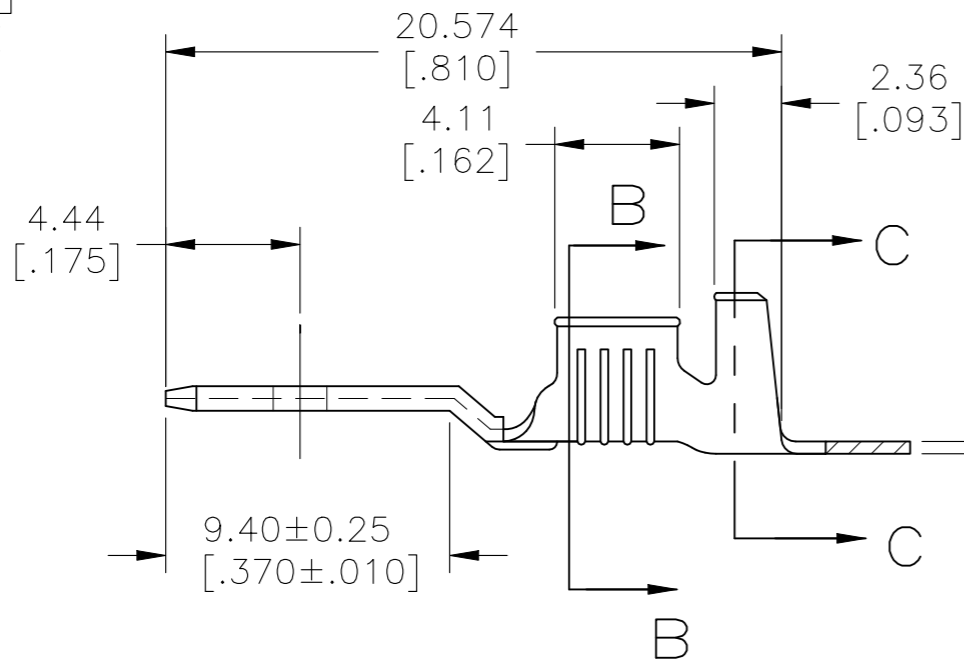


6.35±0.25  
[.250]±.010

0.851  
[.0335] MAX

SECTION A-A  
SCALE 5:1

DIA HOLE



3.95  
3.30  
[.155]  
[.130]

3.95  
3.30  
[.155]  
[.130]

5.46  
4.83  
[.215]  
[.190]

5.08  
4.45  
[.200]  
[.175]

SECTION B-B  
SCALE 5:1

SECTION C-C  
SCALE 5:1

6	4	PRE-TIN			42474-8
	5	TIN			42474-7
	5	-			42474-6
	5	SILVER .000120 MIN	2.794-3.81		42474-5
	4	TIN	[.110-.150]	18-14 AWG	42474-4
	3	-	DIA		42474-3
		TIN			42474-2
	5	-			42474-1
		FINISH	INSULATION RANGE	WIRE SIZE	PART NO

1 CONTINUOUS STRIP ON REELS.

2 FEED TO BE .540#.005.

3 REVERSED REEL OF 42474-1.

4 REVERSED REEL OF 42474-2.

5 FOREIGN PRODUCTION ONLY.

6 LUBRICANT APPLIED AFTER TIN PLATING.

THIS DRAWING IS A CONTROLLED DOCUMENT.

DWN JR RUTH 1/31/91  
CHK MS FEHER 1/31/91  
APVD C MEYERS 1/31/91

**STE** TE Connectivity

NAME: TAB, FASTON™ .250 SERIES

SIZE: A3 CAGE CODE: 00779 DRAWING NO: C-42474 RESTRICTED TO: -

WEIGHT: 0.000000

CUSTOMER DRAWING SCALE: 4:1 SHEET: 1 OF 1 REV: V3