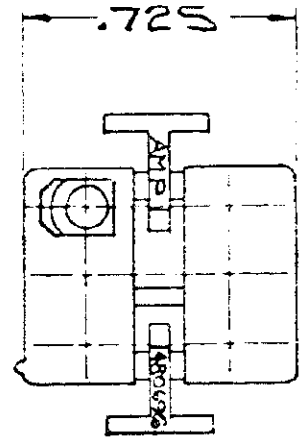
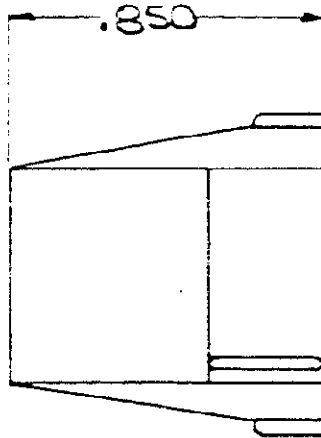
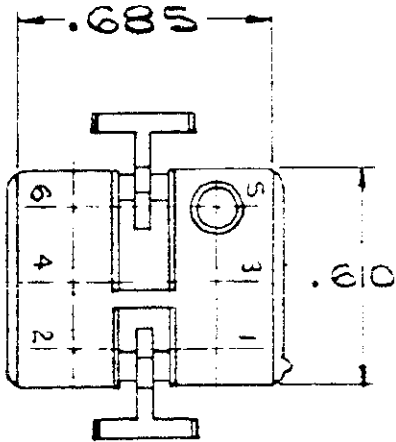


NUMBER
480696

S



- 1. TO BE USED WITH DUAL LANCE MATE-N-LOK SOCKETS.
- 2 TO BE USED WITH CAP 480697.

HOUSING NO.	MATERIAL	COLOR
1-480696-0	NYLON	NATURAL

DIMENSIONS IN INCHES. DO NOT SCALE PRINT.

UNPUBLISHED COPY NOT TO BE REPRODUCED NOR PUBLISHED WITHOUT PERMISSION

© 1972 BY AMPERCO CORP. ALL RIGHTS RESERVED. AMP PRODUCTS COVERED BY PATENTS AND/OR PATENTS PENDING

CUSTOMER COPY REFERENCE ONLY

B OBSOLETE 1-1/1-9 PER CM-473 *RS* *7/2/86*

A1 RESTORED *RS* *87-85*

A RELEASED *AMP 993* *66/81* *7/1/73*

LTR REVISION RECORD ECN DR DATE

DR *[Signature]* DE

CHK *[Signature]* APP *[Signature]*

MATERIAL AND FINISH

///

AMP AMP INCORPORATED HARRISBURG, PENNA.

CLASS .084 SOCKET HOUSING

WIRE RANGE INSULATION TYPE

/// *///* MOTOR MOUNT

TOLERANCE EXCEPT AS NOTED = .015 = 1°

SCALE 2-1 LOC CM: A NO 480696 REV B

NAME 6 CIRCUIT MATE-N-LOK PLUG