

FCNM Series Fluid Level switches



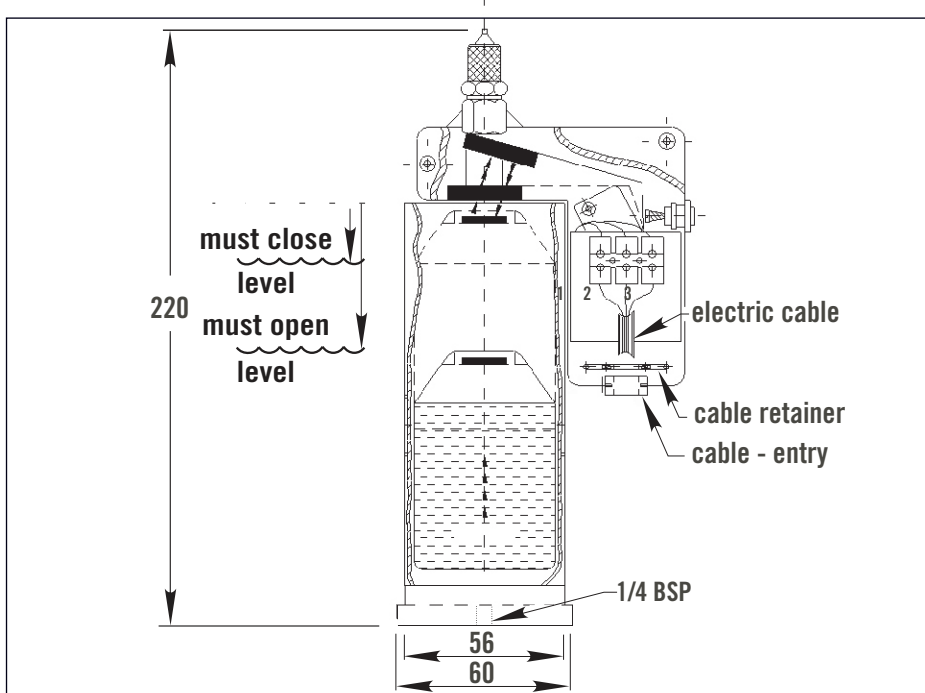
The switch is based on a simple principle of a float located inside an enclosed chamber, which follows the level of the liquid in the system. When the liquid level rises, the float magnet attracts and operates a 20A 250Vac microswitch with N/O and N/C contacts.

Suitable for use in water or liquids of SG equal to or greater than 1.

SPECIFICATION	
Material:	Housing : Brass Float : Polypropylene
Switching voltage max.	250Vac
Switching current max. resistive	20A
Max working pressure	8 bar
Pipe connections:	Fluid input 1/4" BSP/GAS Air vent 3-4mm flexible
Temperature Range	0/55°C +32/+131°F
Must Close Level (S.G.=1)	14mm
Must Open Level (S.G.=1)	32mm



- Level control in pipes
- Prevention of Dry-running of centrifugal pumps
- Level control in tanks
- Level control in pressurised containers (autoclaves)



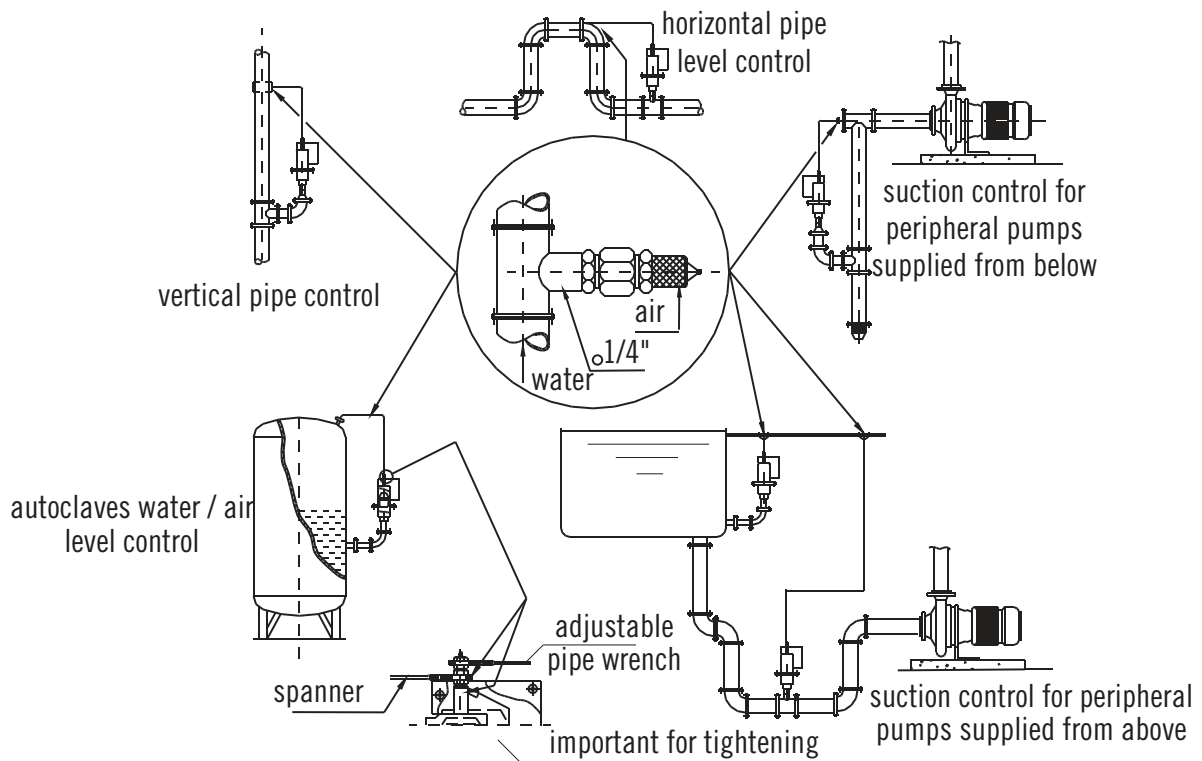
Cynergy3 Components Ltd
7 Cobham Road
Ferndown Industrial Estate
Wimborne
Dorset BH21 7PE
Tel: +44 (0) 1202 897969
sales@cynergy3.com

FCNM Series Fluid Level switches



INSTALLATION

FCNMRP type applications - solution suitable both for pressurised tubing and for depressurised pipes and systems



FCNMAS type applications - solution suitable only for pressurised tubing

