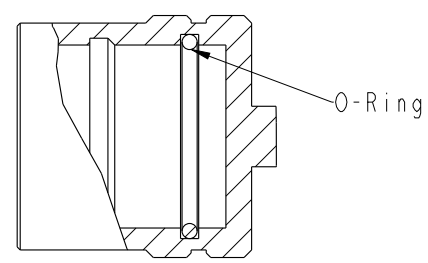
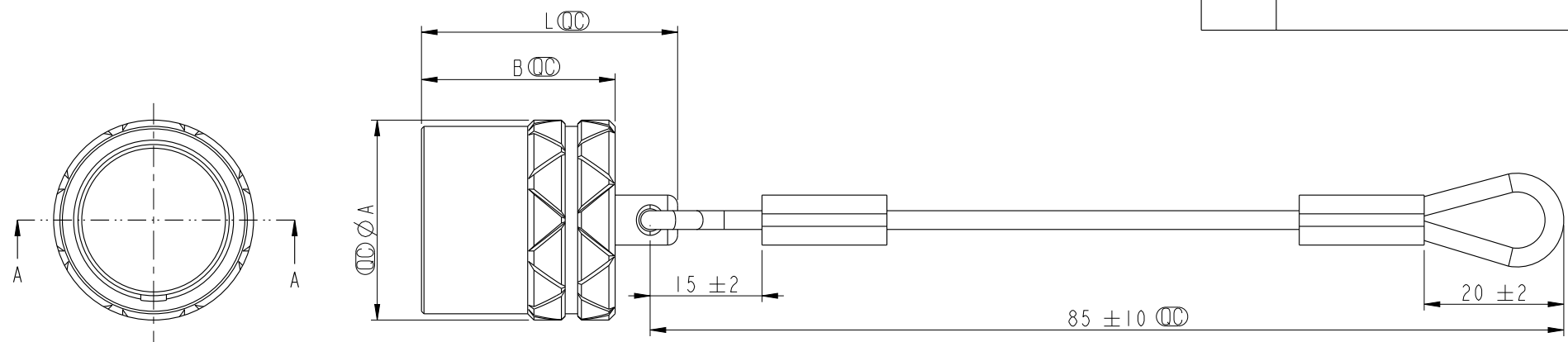


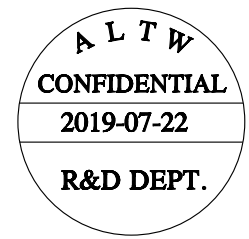
THIS DOCUMENT IS SUBJECT TO CHANGE WITHOUT NOTICE. IT IS CONFIDENTIAL AND A PROPERTY OF Amphenol LTW. DISCLOSURE TO THIRD PARTY HAS TO BE AUTHORIZED BY Amphenol LTW.

| REV. | DESCRIPTION |
|------|-------------|
| | |
| | |
| | |



SECTION A-A

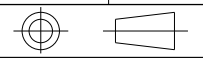
CAP-WLKMQPEX
Series



Notes:
 * \varnothing Important Dimensions To Check.
 * Cap: Brass, CR Plated.
 * O-Ring: Silicone Red

| Product No. | Series | A | B | L |
|--------------|--------|------|------|------|
| CAP-WLKMQPE2 | 0K | 14.0 | 12.5 | 18.5 |
| CAP-WLKMQPE3 | 1K | 16.0 | 14.5 | 20.5 |
| CAP-WLKMQPE4 | 2K | 19.5 | 17.5 | 22.5 |

UNIT: mm
 TOLERANCE
 ±0.2MM



| | | | |
|-----------------------------------|---------------|---------------------------------|--|
| TITLE FLO K TFG Waterproof CAP | | | |
| SCALE 1:1 | SIZE A4 | SHEET 1 OF 1 | |
| REV. A | WC-REV. .0 | \varnothing : Inspection item | |

Amphenol LTW
 安費諾亮泰企業股份有限公司

| | | |
|------------------------|---------------------|--------------------|
| ITEM NO | DRAWN BY Ouyang | DATE 2019-07-22 |
| DWG NO CAP-WLKMQCEX | CHECKED BY Jerry | DATE 2019-07-22 |
| CUSTOMER ALTW | APPROVED BY Fred | DATE 2019-07-22 |