

| | | | | | | | | | | | | | |
|-------------|--|----------------|--|---------------------------------------|--|------------------------|--|-----------------|--|-------------------|--|----|--|
| mat'l. code | | - | | surface | | ✓ tolerance | | projection | | product family | | | |
| lfr | | ecn no | | dr | | date | | ASME_Y14.5 | | PCI_EXPRESS | | | |
| | | | | tolerances unless otherwise specified | | | | MM | | title | | | |
| | | | | angles | | LineG | | scale N/A | | MINI_PCIE | | | |
| | | | | ±2' | | .02±0.30 | | | | 5.2MM_HEIGHT | | | |
| | | | | | | .00±0.20 | | | | dwg no | | | |
| | | | | | | .000±0.10 | | | | sheet 1 of 5 size | | | |
| | | | | dr | | WINSTON_ZHU 2020-05-12 | | Amphenol FCi | | 10151349 | | | |
| | | | | enfr | | ZHENHUA_LIU 2020-05-12 | | | | CUSTOMER Drawing | | A4 | |
| | | | | appd | | HEAVEN_CEN 2020-05-12 | | | | | | | |
| sheet index | | revision sheet | | A | | | | | | | | | |

NOTES:

1. MATERIAL:
HOUSING: HIGH TEMPERATURE PLASTIC, UL94 V-0, BLACK COLOR,
CONTACTS: COPPER ALLOY
PEGS: COPPER ALLOY
2. FINISH:
CONTACTS: SELECTED GOLD PLATING ON THE CONTACT AREA,
1u" GOLD PLATING ON THE SOLDER TAILS,
50u" NICKEL UNDERPLATING OVER ALL.
PEGS: 120u" MATTE-TIN OVER 50u" MIN. NICKEL.
3. CARD THICKNESS APPLIES ACROSS TABS AND INCLUDES PLATING AND/OR METALLIZATION.
4. EDGE BEVEL MUST BE PRESENT AND FREE OF CUTTING BURRS FROM PCB AND CONTACT MATERIALS.
5. THE HOUSING WILL WITHSTAND EXPOSURE TO 260°C PEAK TEMPERATURE FOR 10 SECONDS IN RE-FLOW APPLICATION.
6. PRODUCT SPECIFICATION: GS-12-1513

PRODUCT NUMBER CODE

10151349 - 052 R X LF

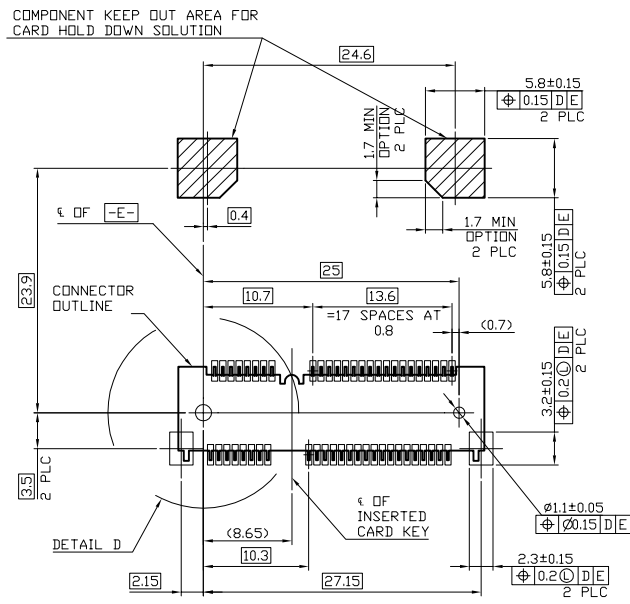
52 CONTACTS

PACKING OPTIONS
R: TAPE & REEL

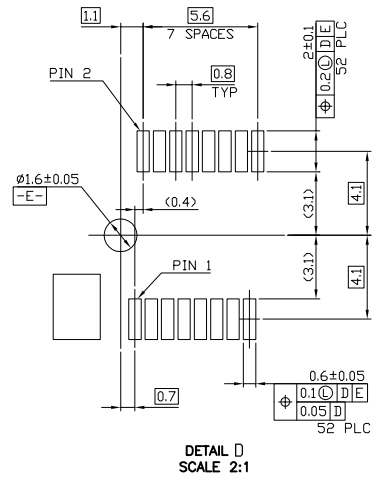
LEAD FREE

CONTACT AREA PLATING
0: 30u" GOLD
1: 10u" GOLD
2: GOLD FLASH

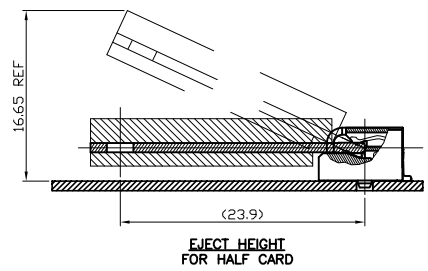
| | | | | | | | | | | | |
|-------------|----------|----|------|---------------------------------------|-------------|------------|------------|-------------------------|----------------|-------------|------------------|
| mat'l. code | | - | | surface | - | tolerance | ASME_Y14.5 | projection | product family | PCI_EXPRESS | |
| lfr | ecn no | dr | date | tolerances unless otherwise specified | | | | | title | | |
| | | | | angles | linear | .02±0.30 | | MM | MINI_PCIE | | |
| | | | | ±2' | | .00±0.20 | | scale N/A | 5.2MM_HEIGHT | | |
| | | | | dr | WINSTON_ZHU | 2020-05-12 | | Amphenol FCi | dwg no | | sheet 2 of 5 |
| | | | | enfr | ZHENHUA_LIU | 2020-05-12 | | | 10151349 | | A4 |
| | | | | chr | | | | | type | | CUSTOMER Drawing |
| | | | | appd | HEAVEN_CEN | 2020-05-12 | | | | | |
| sheet index | revision | A | | | | | | | | | |



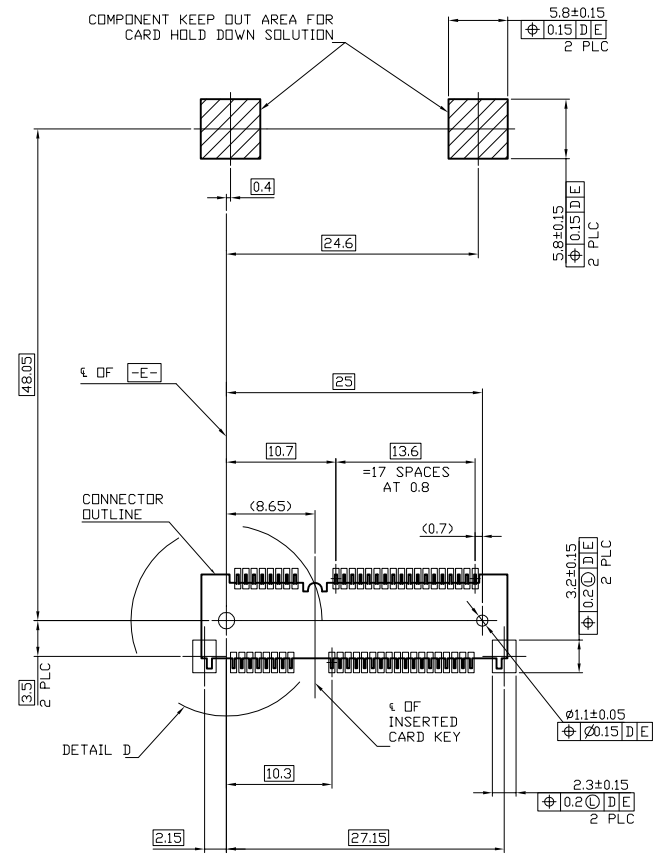
-D- IS THE TOP SURFACE OF PCB.
**RECOMMENDED P.C. BOARD PATTERN LAYOUT
 FOR HALF CARD CONNECTOR
 (TOP VIEW)**



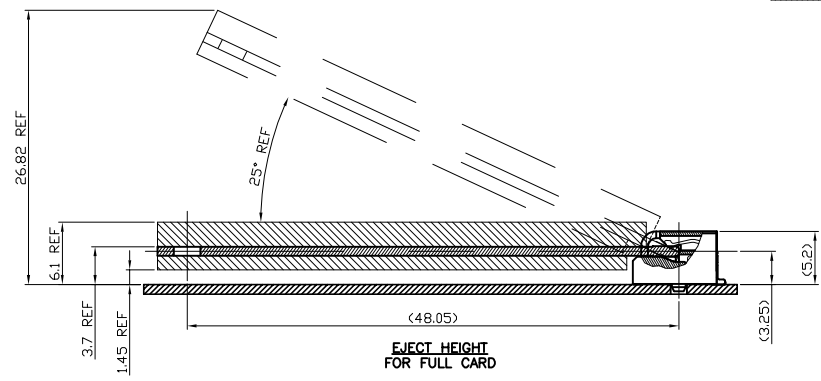
DETAIL D
 SCALE 2:1



EJECT HEIGHT
 FOR HALF CARD



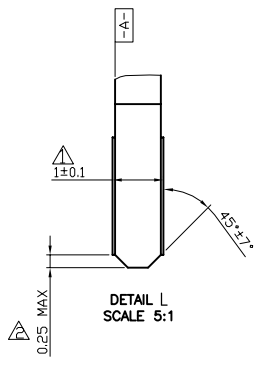
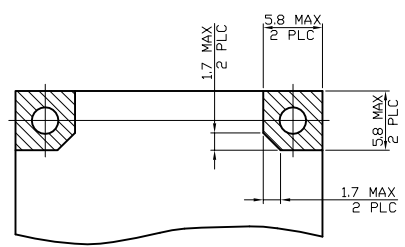
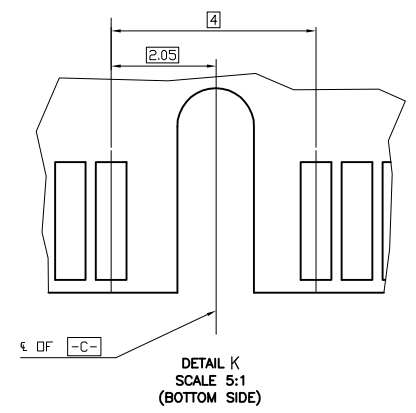
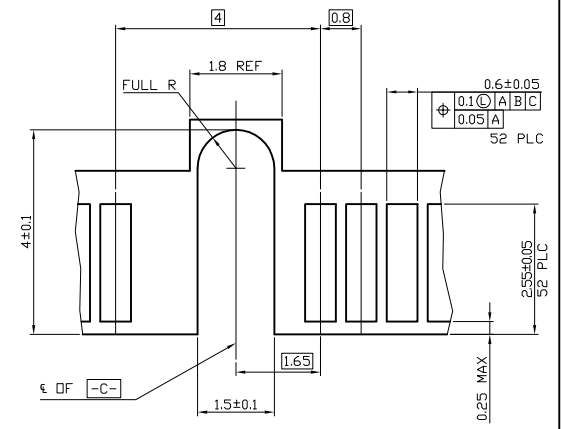
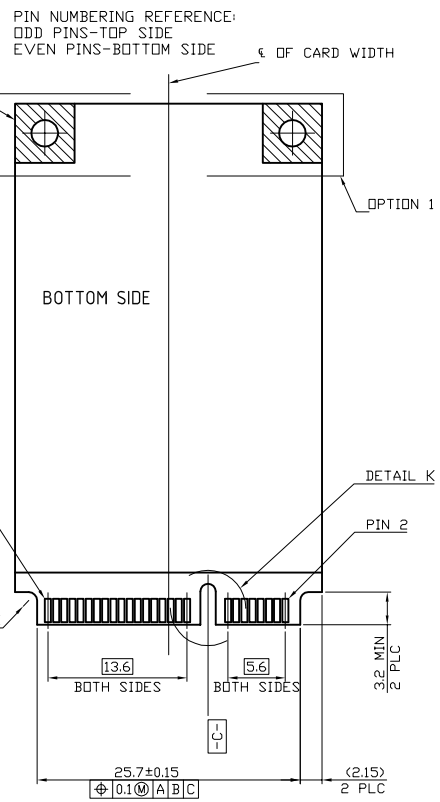
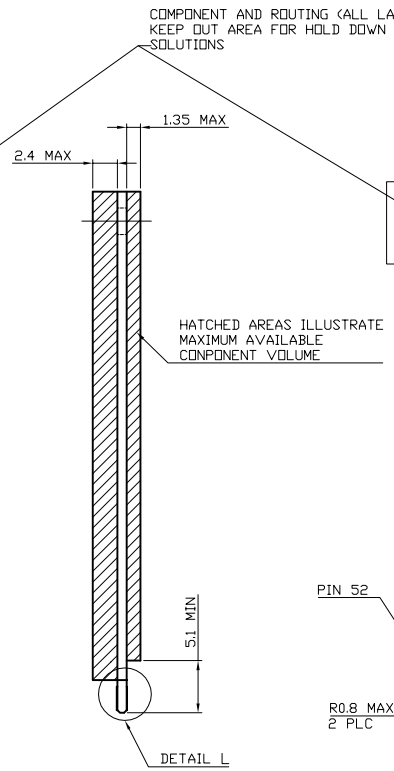
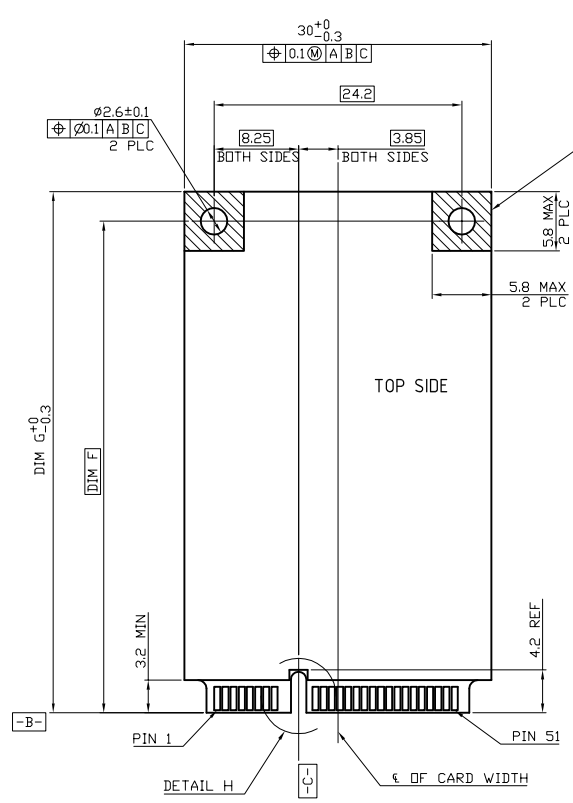
-D- IS THE TOP SURFACE OF PCB.
**RECOMMENDED P.C. BOARD PATTERN LAYOUT
 FOR FULL CARD CONNECTOR
 (TOP VIEW)**



EJECT HEIGHT
 FOR FULL CARD

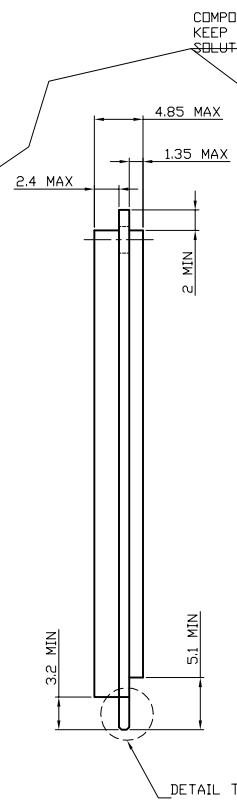
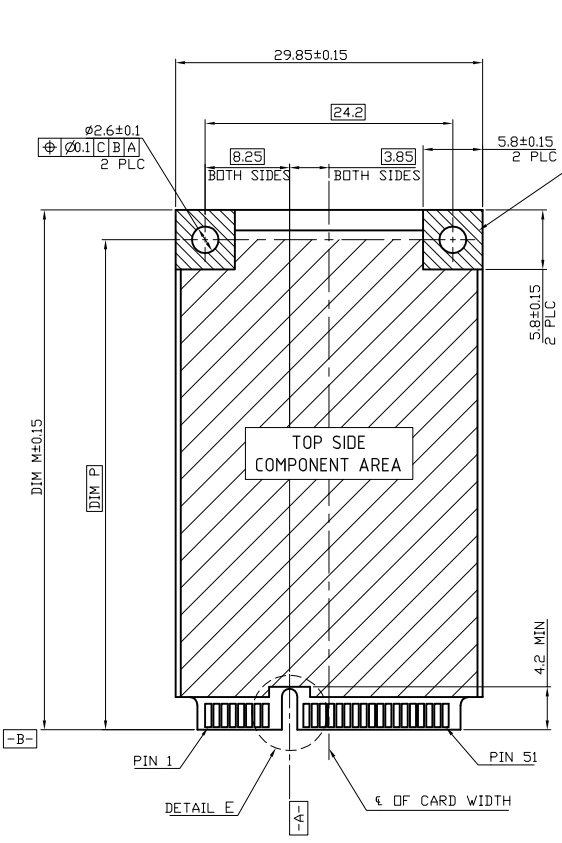
| | | | | | | | | | |
|-------------|----------|---------|-------------|---------------------------------------|------------|------------|-----------------|-------------------|-------------|
| mat'l. code | - | surface | ASME_Y14.5 | tolerance | ASME_Y14.5 | projection | | product family | PCI_EXPRESS |
| lfr | ecn no | dr | date | tolerances unless otherwise specified | | MM | MM | title | |
| | | | | angles | .02±0.30 | | | MINI_PCIE | |
| | | | | ±2' | .00±0.20 | scale N/A | Amphenol FCi | 5.2MM_HEIGHT | |
| | | | | LineGr | .000±0.10 | | | sheet 3 of 5 size | |
| | | dr | WINSTON_ZHU | 2020-05-12 | | | | dwg no | |
| | | enr | ZHENHUA_LIU | 2020-05-12 | | | | 10151349 | |
| | | chr | | | | | | A4 | |
| | | app | HEAVEN_CEN | 2020-05-12 | | | | CUSTOMER Drawing | |
| sheet index | revision | A | | | | | | | |

| | | |
|-------|-------|----------------|
| DIM F | DIM G | |
| 48.05 | 50.95 | FULL-MINI CARD |
| 23.9 | 26.8 | HALF-MINI CARD |



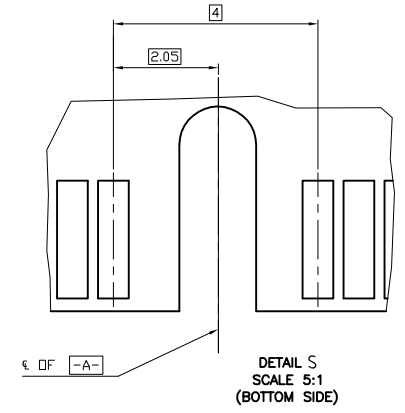
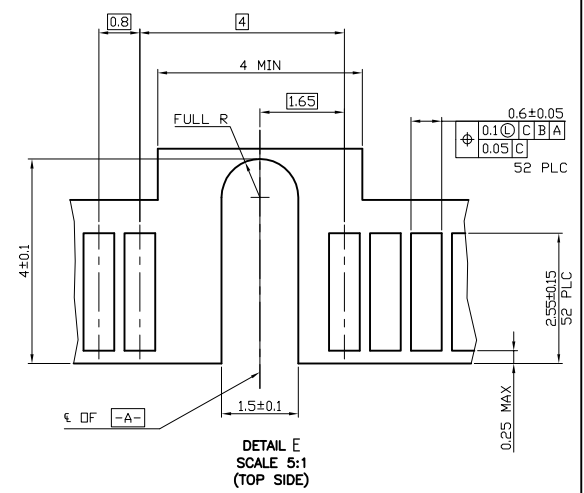
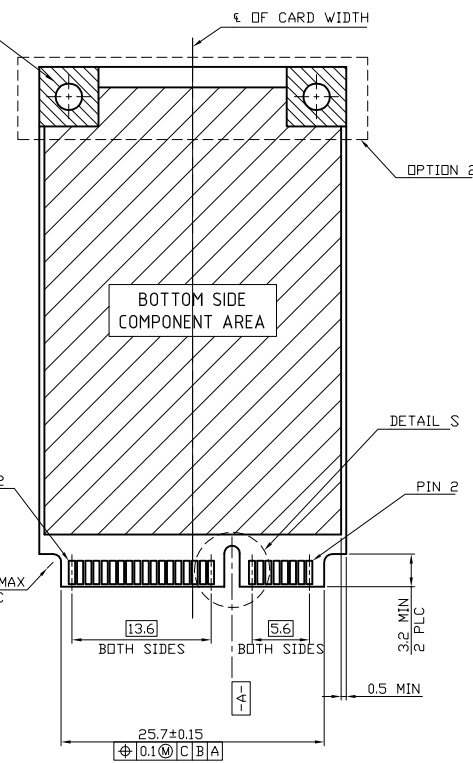
FOR PCI EXPRESS MINI CARD

| | | | | | | | | | |
|-------------|----------|---------|------|---------------------------------------|-------------|------------|-------------------------|-------------------|-------------|
| mat'l. code | - | surface | - | tolerance | ASME_Y14.5 | projection | MM | product family | PCI_EXPRESS |
| lfr | ecn no | dr | date | tolerances unless otherwise specified | | MM | | title | |
| | | | | angles | LineG | | | MINI_PCIE | |
| | | | | ±2' | .02±0.30 | | | 5.2MM_HEIGHT | |
| | | | | | .00±0.20 | | | dwg no | |
| | | | | | .000±0.10 | | | sheet 4 of 5 size | |
| | | | | dr | WINSTON_ZHU | 2020-05-12 | Amphenol FCi | 10151349 | |
| | | | | enfr | ZHENHUA_LIU | 2020-05-12 | | A4 | |
| | | | | chr | | | | type | |
| | | | | appc | HEAVEN_CEN | 2020-05-12 | | CUSTOMER Drawing | |
| sheet index | revision | A | | | | | | | |



COMPONENT AND ROUTING (ALL LAYERS)
KEEP OUT AREA FOR HOLD DOWN
SOLUTIONS

| DIM P | DIM M | |
|-------|-------|-----------|
| 48.05 | 50.8 | FULL CARD |
| 23.9 | 26.8 | HALF CARD |



- NOTES:
- ⚠ CARD THICKNESS APPLIES ACROSS TABS AND INCLUDES PLATING AND/OR METALLIZATION.
 - ⚠ EDGE BEVEL MUST BE PRESENT AND FREE OF CUTTING BURRS FROM PCB AND CONTACT MATERIALS.
 - ⚠ COMPONENT AND ROUTING (TOP/BOTTOM LAYER) KEEP OUT AREA FOR HOLD DOWN SOLUTIONS.

FOR mSATA

| | | | | | | | | | |
|-------------|----------|---------|-------------|---------------------------------------|------------|------------|----|----------------|---------------------------|
| mat'l. code | - | surface | - | tolerance | ASME_Y14.5 | projection | MM | product family | PCI_EXPRESS |
| lfr | ecn no | dr | date | tolerances unless otherwise specified | | MM | MM | title | MINI_PCIE 5.2MM_HEIGHT |
| | | | | angles | Line of | MM | MM | dwg no | 10151349 |
| | | | | ±2' | .02±0.30 | scale N/A | MM | sheet 5 of 5 | size A4 |
| | | | | | .00±0.20 | | | | |
| | | | | | .00±0.10 | | | | |
| | | dr | WINSTON_ZHU | 2020-05-12 | | | | type | CUSTOMER Drawing |
| | | enfr | ZHENHUA_LIU | 2020-05-12 | | | | | |
| | | chr | | | | | | | |
| | | appd | HEAVEN_CEN | 2020-05-12 | | | | | |
| sheet index | revision | A | | | | | | | |

