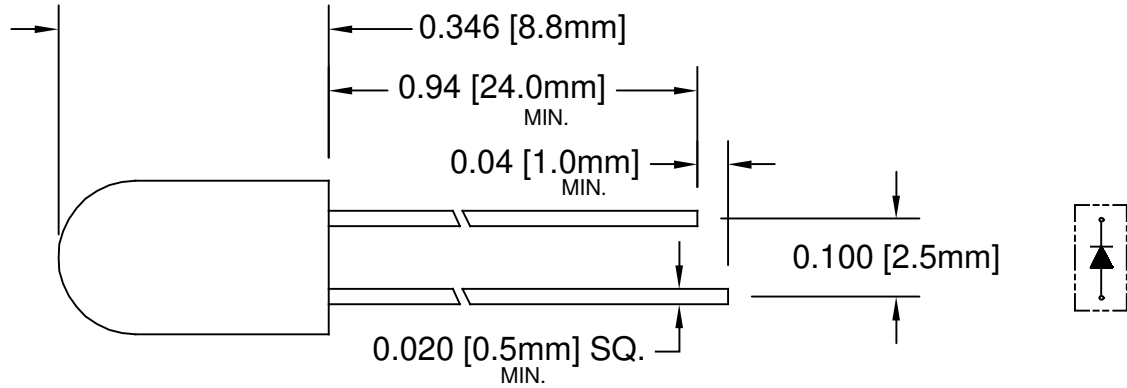
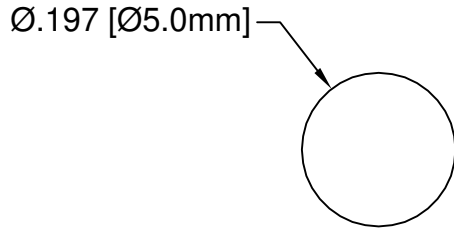


REV.	DESCRIPTION	DATE	APPROVED
A	Engineering Update w/o Changes	02/19/07	M. C.



Recommended Mounting
Hole Size = $\text{Ø}0.032^{+0.003}_{-0.002}$

LED Part No.	Chip			Lens Appearance	Absolute Maximum Ratings				Electro-Optical Data @ 20mA			Viewing Angle (Deg)
	Material	Peak Wave Length λ_p (nm)	Emitted Color		$\Delta\lambda$ (nm)	Pd (mW)	If (mA)	Peak If (mA)	Vf (V)		Iv (mcd)	
									Typ.	Max.	Typ.	
5GW	GaP/GaP	568	GREEN	WHITE DIFFUSED	30	80	30	150	2.2	2.6	65	45

ABSOLUTE MAXIMUM RATINGS (Ta=25°C)

REVERSE VOLTAGE _____ 5V
 REVERSE CURRENT _____ 100uA
 OPERATING TEMPERATURE RANGE _____ -40°C - 80°C
 STORAGE TEMPERATURE _____ -40°C - 85°C
 LEAD SOLDERING TEMPERATURE(1/16" FROM BODY) _____ 260 C FOR 5 SECONDS

STANDARD TOLERANCE (UNLESS OTHERWISE SPECIFIED)		 4 THOMAS, IRVINE, CA 92618 TEL: (949) 951-8808 FAX: (949) 951-3974
DECIMALS	ANGULAR	
.X ± .1	X° ± 1°	
.XX ± .02		TITLE: T-1¼ (5mm) FLANGE & NON-FLANGE LED
.XXX ± .010		
DESIGNED: Dan Beckman	DATE: 02/19/07	PART NO: 5GW
CHECKED: T. Yin	DATE: 02/19/07	REVISION: A
CAGE CODE : 32559		SHEET # 1 OF 1
CAD GENERATED DOCUMENT. DO NOT MEASURE DRAWING.		