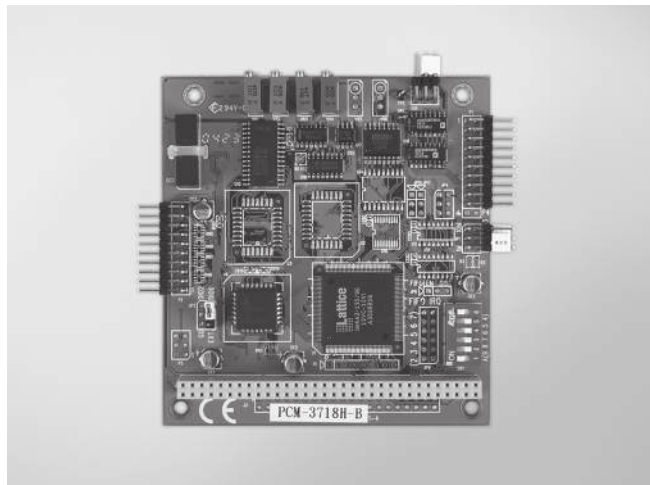


PCM-3718H/HG/HO PCM-3724

100 kS/s, 12-bit, 16-ch
Multifunction PC/104 Module

48-ch Digital I/O PC/104
Module



PCM-3718H/HG/HO

FCC CE RoHS
COMPLIANT
2002/95/EC

Specifications

Analog Input

- **Channels** 16 single-ended / 8 differential
- **Resolution** 12 bits
- **Max. Sampling Rate** 100 KHz* (DMA transfer)
*80 kHz on P4-based (or upper) system
- **Input Impedance** 10 M Ω
- **Sampling Modes** Software, pacer or external
- **Input Range**

PCM-3718H and PCM-3718HO	Bipolar	$\pm 10, \pm 5, \pm 2.5, \pm 1.25, \pm 0.625$
	Unipolar	$0 \sim 10, 0 \sim 5, 0 \sim 2.5, 0 \sim 1.25$
PCM-3718HG	Bipolar	$\pm 10, \pm 5, \pm 1, \pm 0.5, \pm 0.1, \pm 0.05, \pm 0.01, \pm 0.005$
	Unipolar	$0 \sim 10, 0 \sim 1, 0 \sim 0.1, 0 \sim 0.01$

Analog Output (PCM-3718HO only)

- **Channels** 1 (12 bits)
- **Output Range**

Internal Reference	Unipolar (V)	$0 \sim 5, 0 \sim 10$
External Reference (V)		$0 \sim 10, 0 \sim -10$

- **Slew Rate** 10 V/ μ s
- **Output Impedance** 0.1 W max.

Digital Input/Output

- **Channels** 16, 5V/TTL
- **Input Voltage** Logic 0: 0.8 V max.
Logic 1: 2.0 V min.
- **Output Voltage** Logic 0: 0.33 V max. @ 6 mA
Logic 1: 3.84 V min. @ 6 mA

General

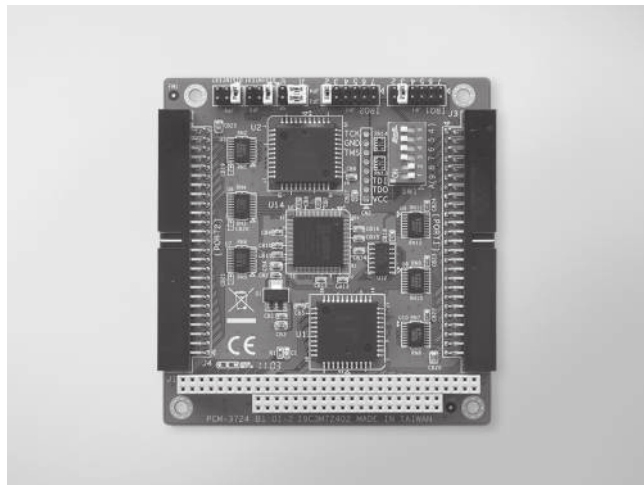
- **Bus Type** PC/104
- **I/O Connectors** 2 x 20-pin box header
- **Dimensions (L x H)** 96 x 90 mm (3.8" x 3.5")
- **Power Consumption** Typical: 5 V @ 180 mA
Max.: 5 V @ 400 mA
- **Operating Temperature** 0 ~ 60°C (32 ~ 140°F)
- **Storage Temperature** -40 ~ 85°C (-40 ~ 185°F)

Ordering Information

- **PCM-3718H** 100 kS/s, 12-bit Multi. PC/104 Module
- **PCM-3718HG** 100 kS/s, 12-bit High-gain Multi. PC/104 Module
- **PCM-3718HO** 100 kS/s, 12-bit Multi. PC/104 Module w/AO

Accessories

- **ADAM-3920** 20-pin DIN-rail Flat Cable Wiring Board
- **PCL-10120-1E** 20-pin Flat Cable, 1 m
- **PCL-10120-2E** 20-pin Flat Cable, 2 m



PCM-3724

FCC CE RoHS
COMPLIANT
2002/95/EC

Features

- Compact size with robust design
- 48 TTL digital I/O lines
- Output status read-back
- Channels simulate 8255 PPI mode 0
- Interrupt triggering, rising/falling edge

Specifications

Digital Input

- **Channels** 48 (shared with output)
- **Compatibility** 5 V/TTL
- **Input Voltage** Logic 0: 0.8 V max.
Logic 1: 2.0 V min.
- **Interrupt Capable Ch.** 2

Digital Output

- **Channels** 48 (shared with input)
- **Compatibility** 5 V/TTL
- **Output Voltage** Logic 0: 0.5 V max. @ 6 mA
Logic 1: 2.0 V min. @ 6 mA

General

- **Bus Type** PC/104
- **I/O Connectors** 2 x 50-pin box header
- **Dimensions (L x H)** 96 x 90 mm (3.8" x 3.5")
- **Power Consumption** 5 V @ 90 mA
- **Operating Temperature** 0 ~ 60°C (32 ~ 140°F)
- **Storage Temperature** -40 ~ 85°C (-40 ~ 185°F)
- **Storage Humidity** 0 ~ 90% RH, non-condensing

Ordering Information

- **PCM-3724** 48-ch Digital I/O PC/104 Module w/ 50-pin Cable

Accessories

- **ADAM-3950** 50-pin DIN-rail Flat Cable Wiring Board
- **PCLD-782B** 24-ch IDI Board w/ 20-pin & 50-pin Flat Cables
- **PCLD-785B** 24-ch Relay Board w/ 20-pin & 50-pin Flat Cables
- **PCL-10150-1.2E** 50-pin Flat Cable, 1.2 m