

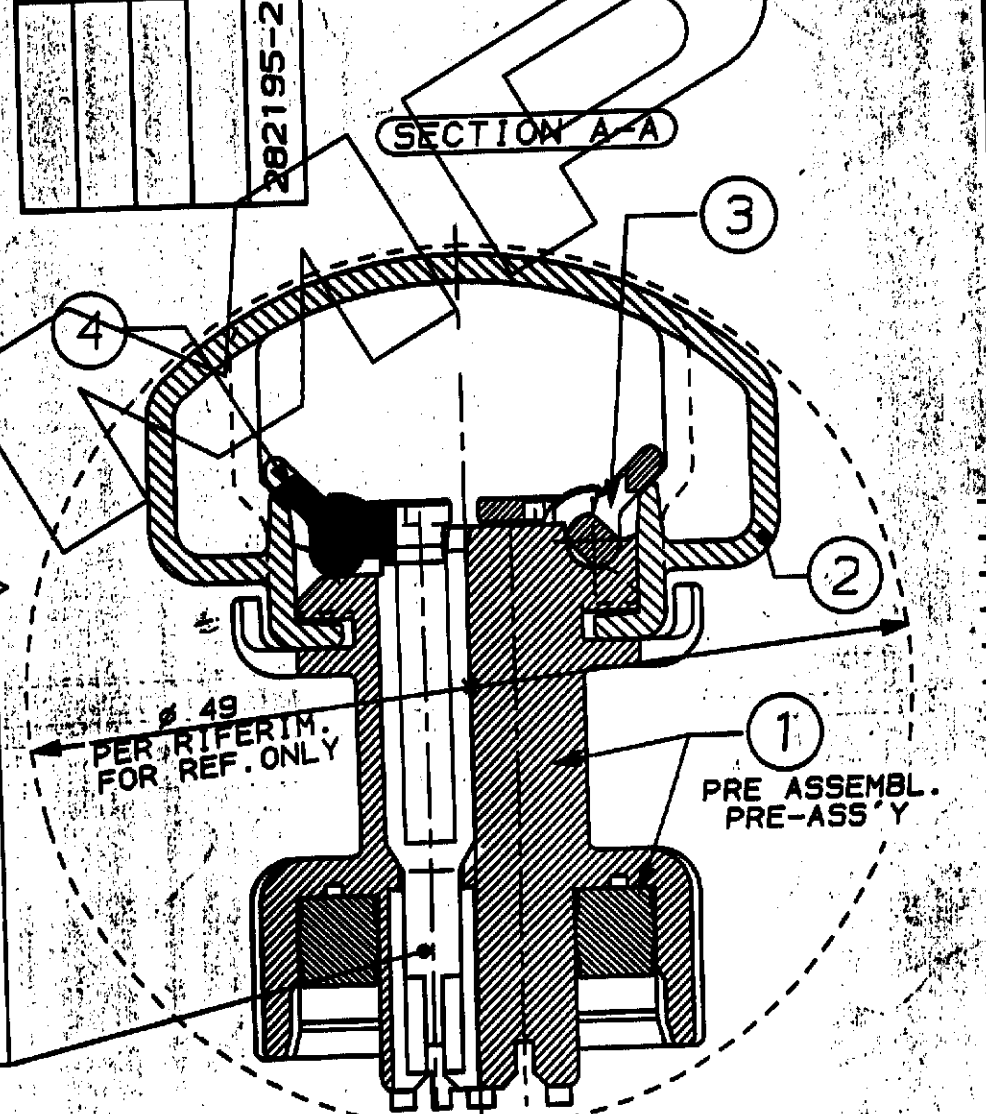
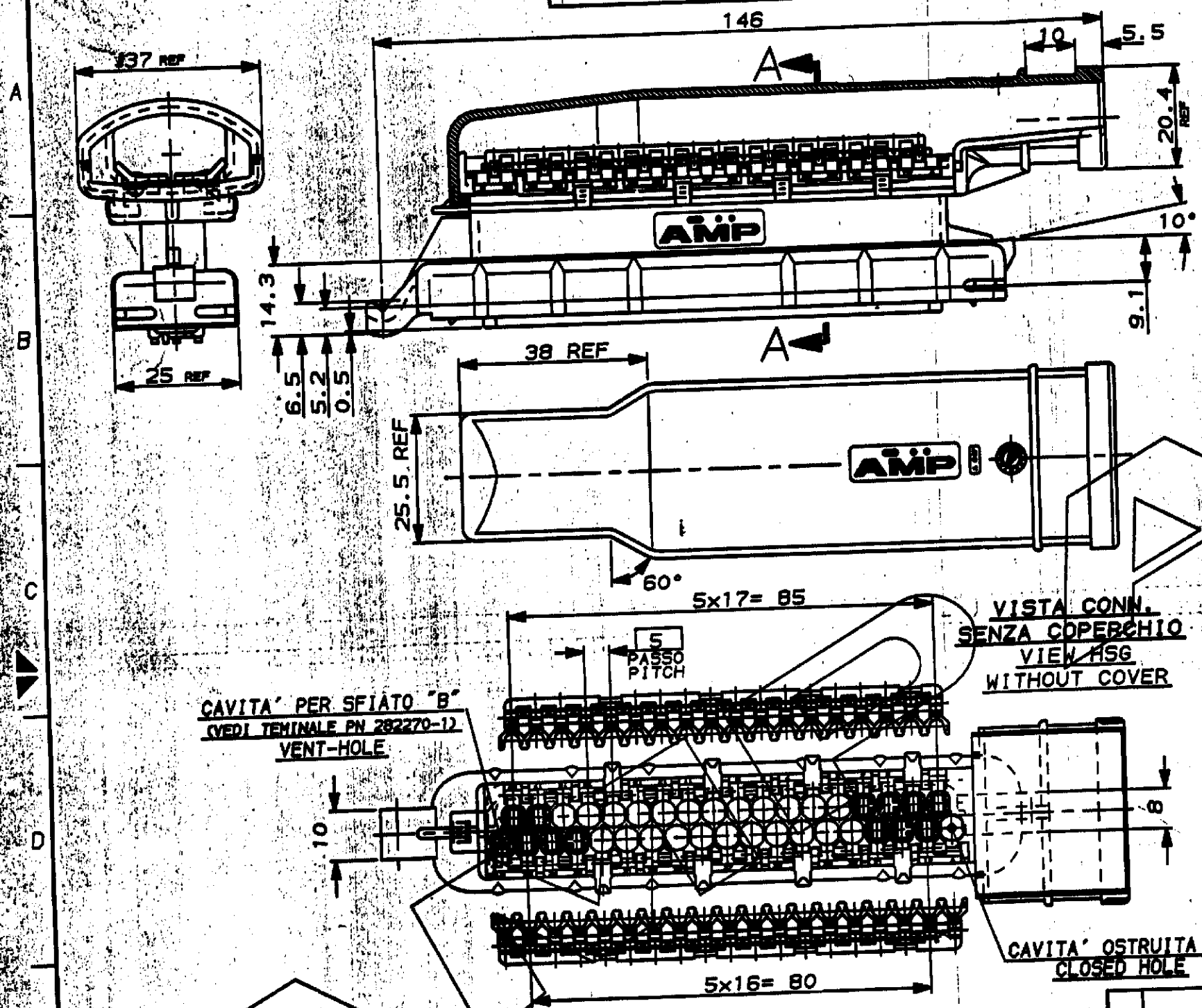
# STANDARD VERSION

SCALA NON IMPERATIVA  
(DO NOT SCALE)  
DIMENSIONI IN mm  
(DIMENSIONS IN mm)

## METRIC

PROIEZIONE EUROPEA  
(EUROPEAN PROJECTION)

Q.TY REQ'D PER ASS'Y		PART. LIST		
		PART. NO.	DESCRIPTION	QTY
	1	282267-1	SEC. LOCK 19 POS.	4
	1	282266-1	SEC. LOCK 18 POS.	3
	1	282268-1	COVER	2
	1	282264-2	HOUSING ASS'Y	1



N°35 CAVITA' ADATTE PER TERMINALE "AMP JUNIOR POWER TIMER" E RELATIVI GOMMINI.  
N°35 CAVITIES SUITABLE FOR "AMP JUNIOR POWER TIMER" CTS.

VISTA CONN. SENZA COPERCHIO  
VIEW HSG WITHOUT COVER

CAVITA' PER SFIATO "B"  
(VEDI TERMINALE PN 282270-12)  
VENT-HOLE

CAVITA' OSTRUITA "A"  
CLOSED HOLE

### NOTES:

- 1 MATERIALS: HSG, COVER AND SEC. LOCKS IN PA 66 GLASS FILLED - SEALING OF SILICONE RUBBER
- 2) ITEMS 1, 2, 3, 4 PACKAGE INTO A CARTON BOX.

### NOTE:

- 1 MATERIALI: -BLOCCHETTO, COPERCHIO E SEC. LOCK IN PA 66 CAR. VETRO -GUARNIZIONE IN SILICONE (Col. ROSSO)
- 2) I PART. 1, 2, 3, 4 SONO CONFEZIONATI IN KIT IN UN'UNICA SCATOLA DI CARTONE.

BLACK COLOUR	1 MATERIALE (MATERIAL)	282195-2 NUMERO (PART NUMBER)
CUSTOMER DWG. FOR REFERENCE ONLY		DISEGNO PER CLIENTE SOLO PER RIFERIMENTO
THIS DRAWING IS UNPUBLISHED		
© COPYRIGHT 1980 BY AMP INCORPORATED, PITTSBURGH, PA. ALL INTERNATIONAL RIGHTS RESERVED. AMP PRODUCTS MAY BE COVERED BY U.S. AND FOREIGN PATENT AND/OR PATENT PENDING.		
TOLLERANZE, SE NON DIVERSAMENTE SPECIFICATO TOLERANCES, UNLESS OTHERWISE SPECIFIED	DIAM. ISOLANTE INS. DIA. RANGED 1.7-2.1 mm 2.4-3.0 mm	RANGO FILE WIRE RANGED 0.5-1.0 mm <sup>2</sup> 1.5-2.5 mm <sup>2</sup>
ANGOLI CAMBERED ± 0.3 ± 2°	AMP ITALIA S.p.A. Corso P. LLI Garvi, 18 COLLENO (TORINO)	
DIS. E. CINI (GR.) 11 MAY 1980	DESCRIZIONE DESCRIPTION 35 P. SPLASH PROOF CONN. WITH SECONDARY LOCK	
REV. A RELEASED FOR PRODUCTION EC ET00-0175-83	CONT. COORD. C. TARTARI	LOC. SIZE NUMERO COMP. NO. I A3 C-282195 A 1 DI 2

ISTRUZIONE PER LA STAMPATURA

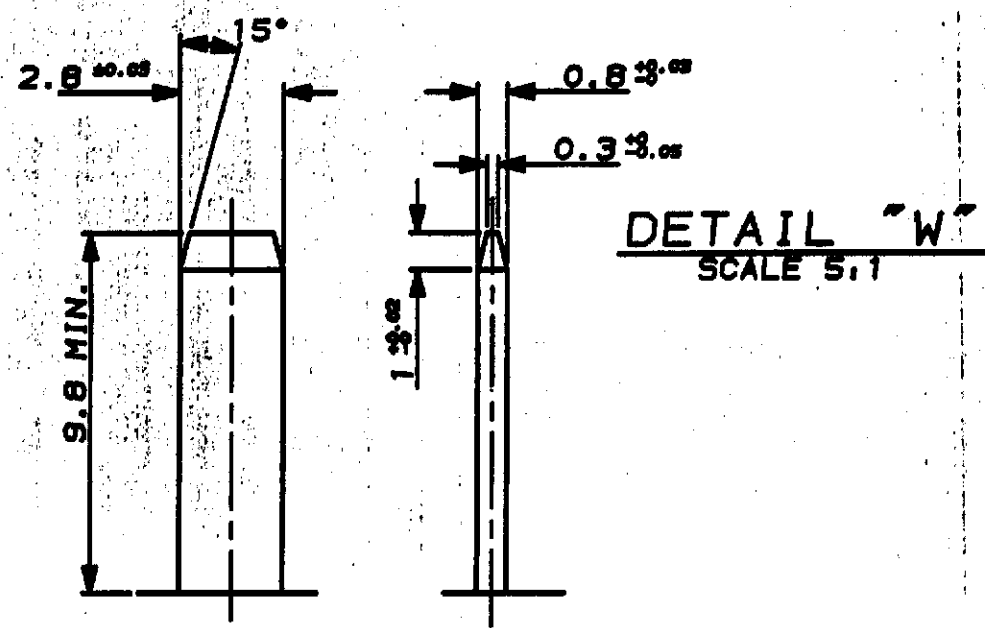
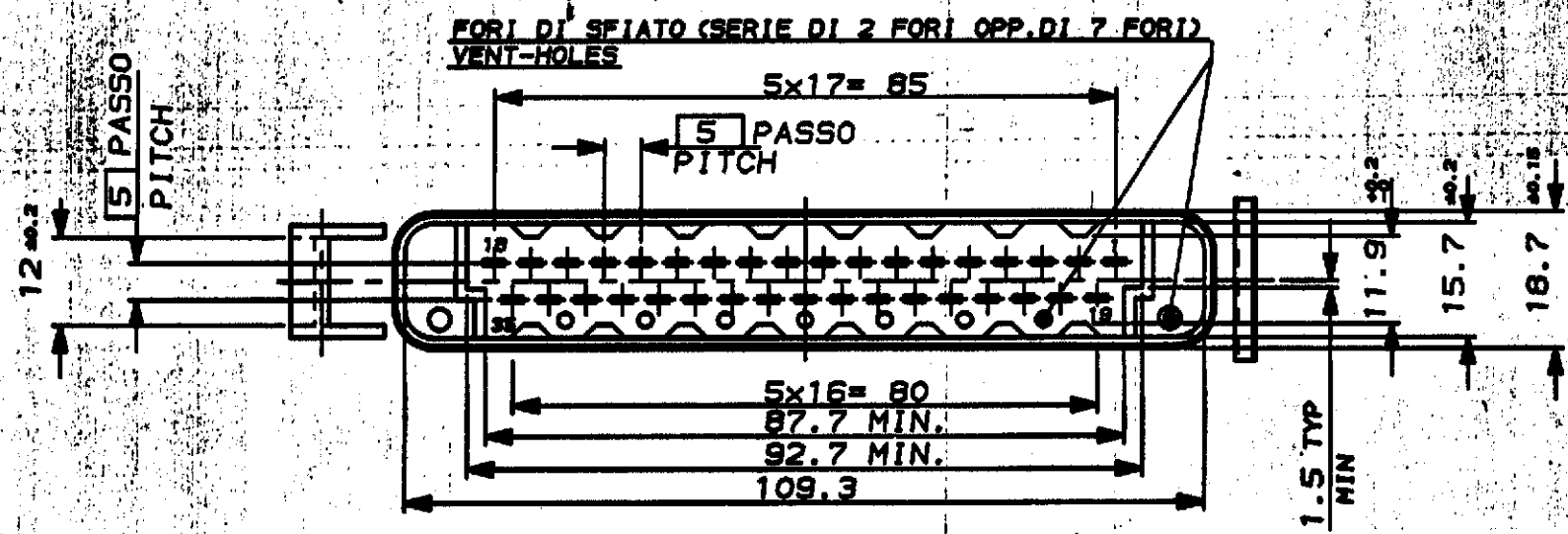
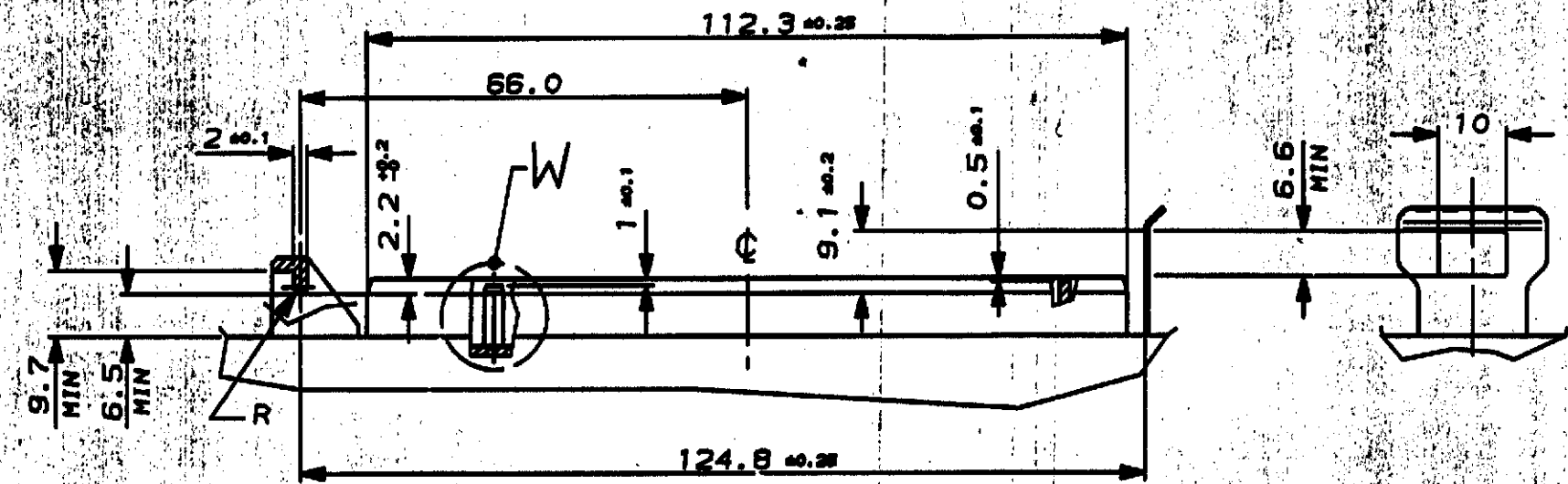
# STANDARD VERSION

SCALA NON IMPERATIVA  
(DO NOT SCALE)  
DIMENSIONI IN mm  
DIMENSIONS IN mm

**METRIC**

PROIEZIONE EUROPEA  
EUROPEAN PROJECTION

## INTERFACCIA D'ACCOPIAMENTO COUNTERPART



SEE SHEET 1 OF 2

(FINISH / COLOUR)	MATERIALE (MATERIAL)	NUMERO (PART NUMBER)
CUSTOMER DWG. FOR REFERENCE ONLY	DISEGNO PER CLIENTE SOLO PER RIFERIMENTO	
THIS DRAWING IS UNPUBLISHED		
© COPYRIGHT IS BY AMP INCORPORATED, HARTFORD, PA. ALL INTERNATIONAL RIGHTS RESERVED. AMP PRODUCTS MAY BE COVERED BY U.S. AND FOREIGN PATENT AND/OR PATENT PENDING.		
TOLLERANZE, SE NON DIVERSAMENTE SPECIFICATE	DIAH. ISOLANTE (CING. DIA. RANGE)	RANGO FILO (WIRE RANGE)
± 0.3	-	-
ANGOLI (ANGLES) ± 2°	<b>AMP</b> AMP ITALIA S.p.A. Corso P.lli Garibaldi COLLENO (TORINO)	
DIS. E.CINI (COR.) 30 NOV. '82	DESCRIZIONE (DESCRIPTION) 35 P. SPLASH PROOF CONN. with SECONDARY LOCK	
CONT. - 28NOV83 C. TARTARI	LOC. SIZE (LOC. NO.)	REV. (REV.)
APP. CAP. 2	IA3C-282195	A 22

DISTRIBUZIONE  
PRINT (DISTR.)