

DockerPi Sensor Hub Development Board

SKU 101100002

The DockerPi SensorHub for obtaining environmental parameters in the Internet of Things. It integrates various environmental sensors: temperature sensors, humidity sensors, air pressure sensors, lighting, and thermal imaging sensors.

You can use them in smart homes.

To obtain various parameters in life, these parameters can be processed to control the home reasonably and intelligently.

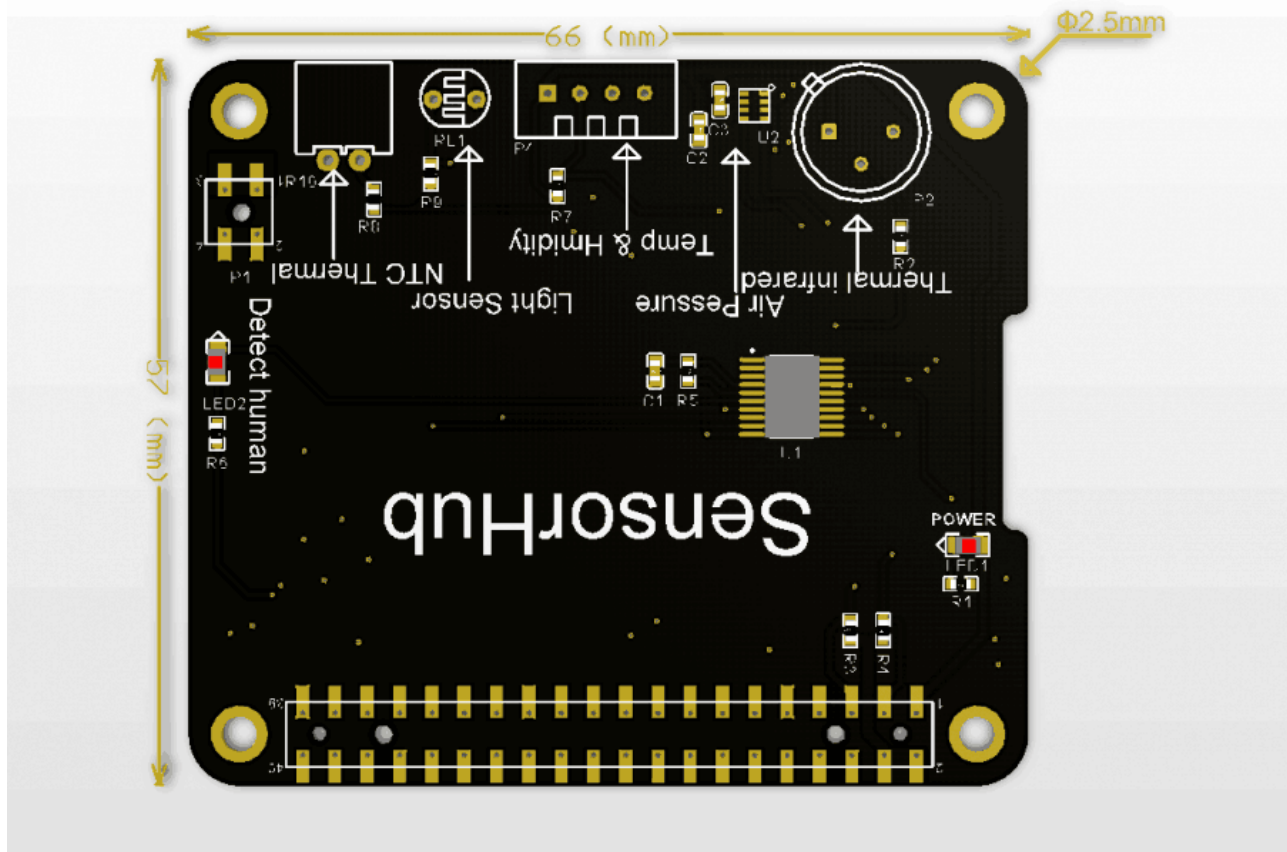
For example, the temperature of the temperature sensor can be used to control the heating device or the air conditioner.

The thermal imaging sensor can detect if someone is in the living room.

Features:

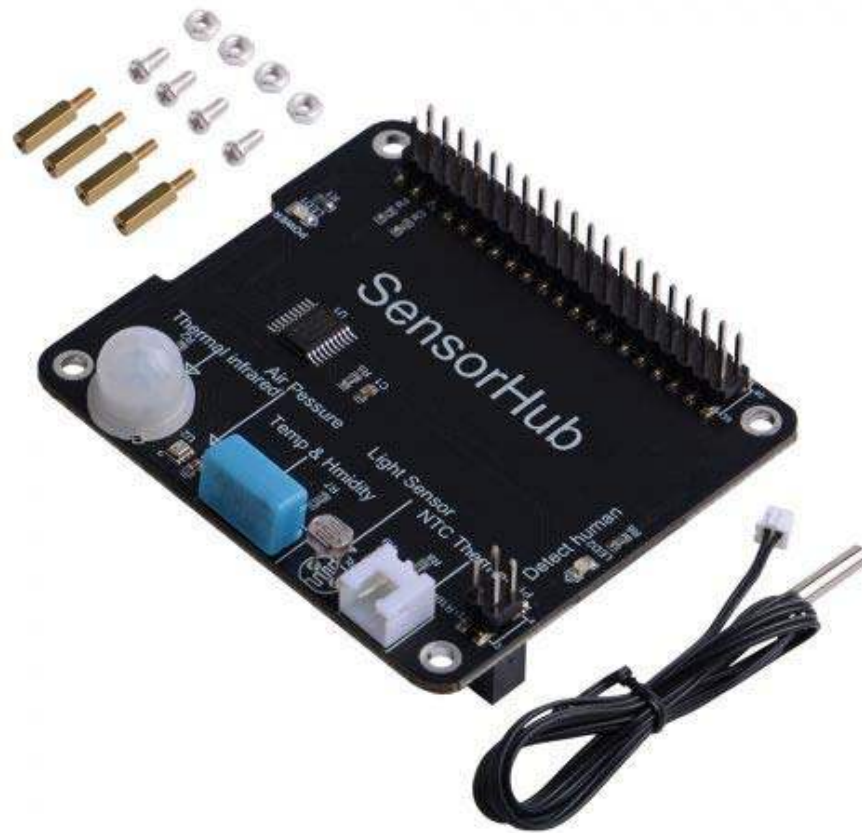
- DockerPi Series
- Programmable
- Read directly(without programming)
- Extend the GPIO Pins
- Ext. Temperature Detection, Thermistor Detection Temperature Range -30°C~127°C
- OnBoard Temperature DHT11 -20°C~60°C
- P. Temperature Sensor -40°C~80°C.
- Humidity detection, sensor detection range 20% Rh ~ 95% Rh
- Light intensity detection, detection range: 0Lux~1800Lux
- Pressure detection, detection range: 300 Pa ~ 1100 hPa
- Biopsy test (biopsy test with the corresponding indicator), maximum detection angle of 100 degrees, the maximum distance of 12m
- Can Stack with other Stack board
- Independent of the mainboard hardware (require I2C support)

Mechanical Drawings



Part List:

- 1 x Sensor Hub development board
- 4 x M2.5x12 copper stick
- 8 x M2.5x6 screws and nuts
- 1 x NTC temperature sensor (waterproof)
- 1 x Introductions



ECCN/HTS

ECCN	ERA99
HSCODE	8543709990
UPC	

