

DO NOT SCALE FROM THIS PRINT

PEC-XX-XX-XX-S-XX

No OF POSITIONS
-03, -07, -10

LEAD STYLE
-01: STRAIGHT TAIL (SEE FIG. 2)
-02: FORMED TAIL

OPTIONS
F -A: ALIGNMENT PIN (USE PEC-XX-S-A, SEE FIG 3)
F -LC: LOCKING CLIP (USE PEC-XX-S & LC-09-TM) (SEE FIG 4)
 ROW SPECIFICATION
 -S: SINGLE (USE PEC-XX-S-XX)

PLATING
 -T: TIN (USE C-170-02-T)
 -TM: MATTE TIN (USE C-170-02-T)

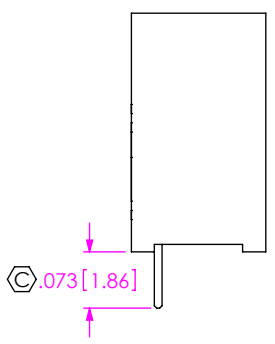
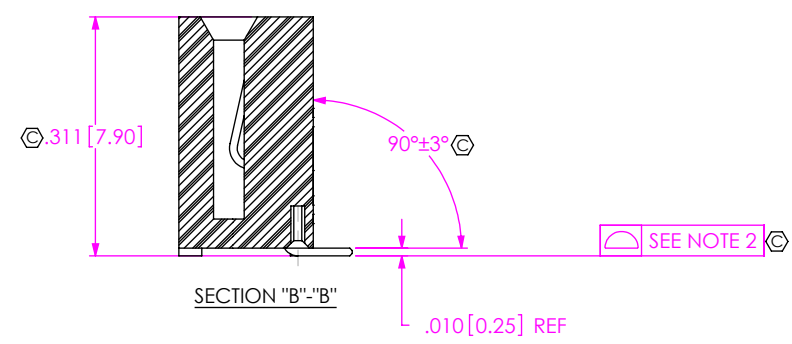
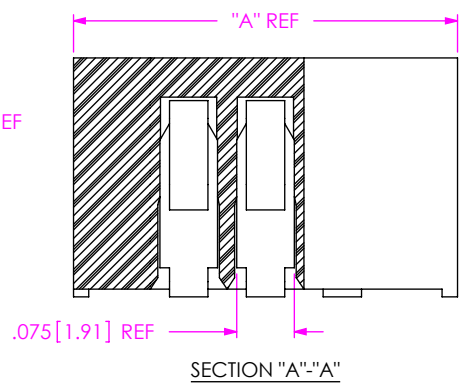
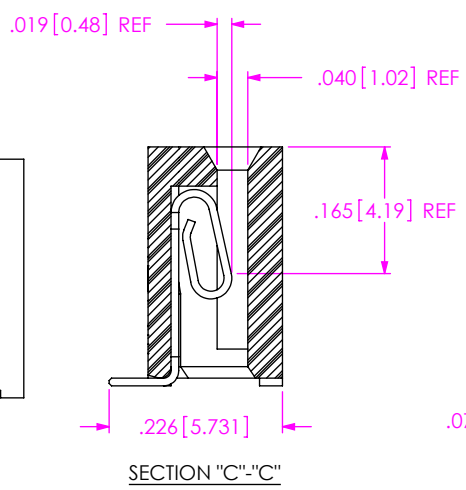
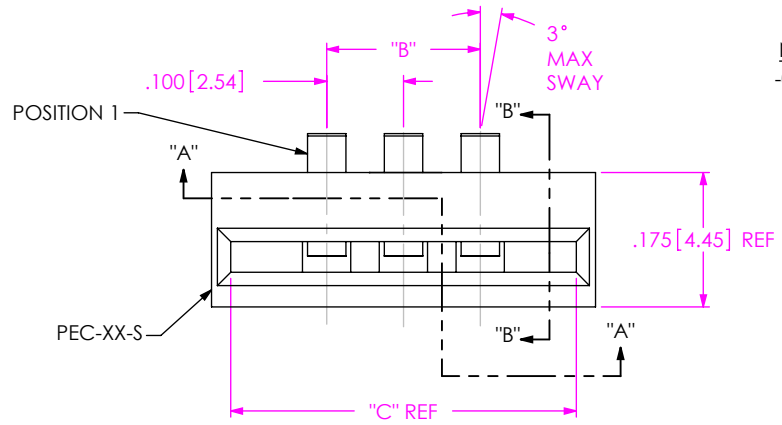
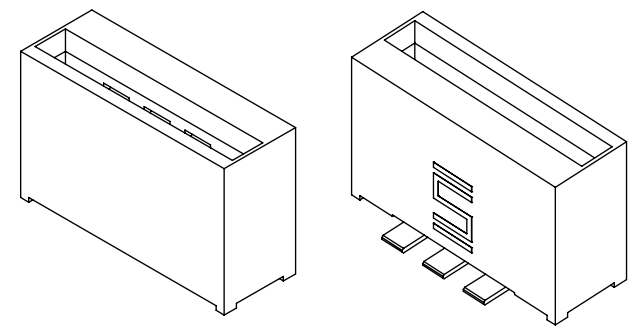
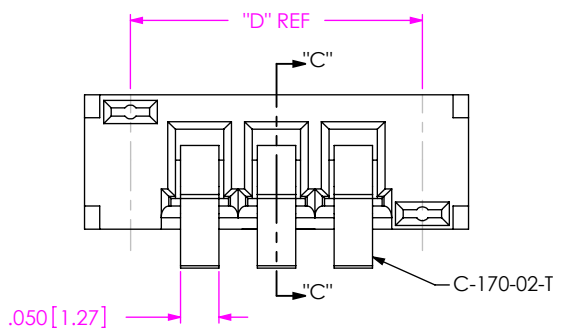


FIG 2
-01 LEAD STYLE
(PEC-03-01-TM-S SHOWN)
(ALSO IN-PROCESS FOR -02 LEAD STYLE)



- NOTES:
1. C REPRESENTS A CRITICAL DIMENSION.
 2. COPLANARITY TO BE WITHIN .006.
 3. BURR ALLOWANCE: .0015 MAX.
 4. MINIMUM PUSHOUT FORCE: .5 LB BEFORE REFLOW.
 5. MAXIMUM ALLOWABLE BOW: .002 INCH/INCH AFTER ASSEMBLY FOR -01 LEAD STYLE.

NUMBER OF POSITIONS	"A"	"B"	"C"	"D"	"E"	"F"
-03	.500	.200	.450	.380	.380	NA
-07	.900	.600	.850	.780	.780	.357
-10	1.200	.900	1.150	1.080	1.080	.457

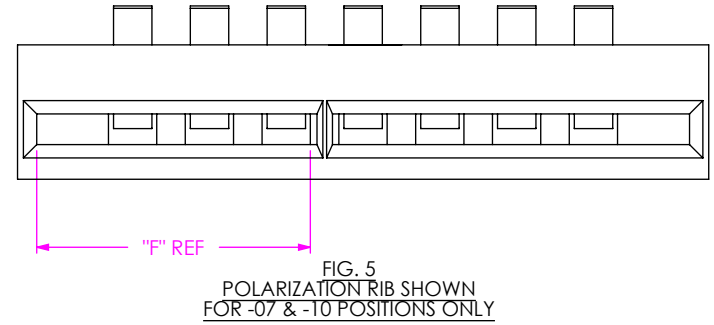
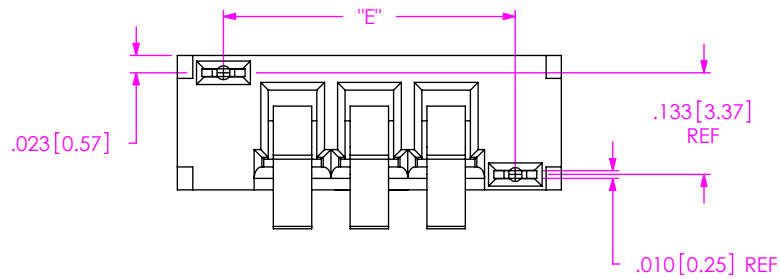
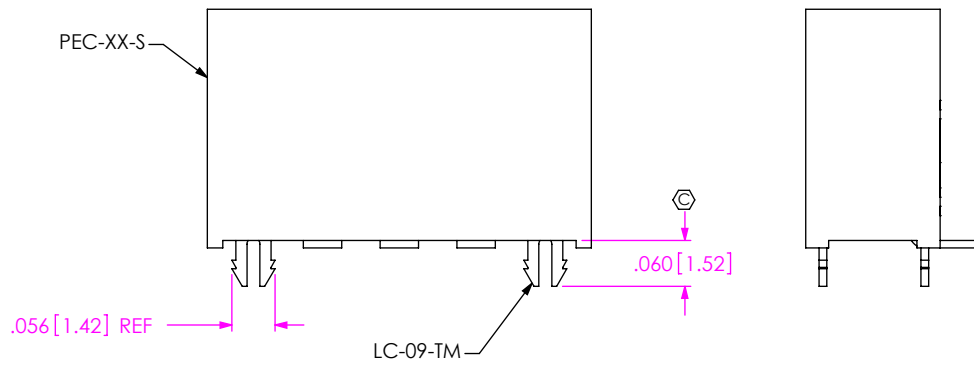
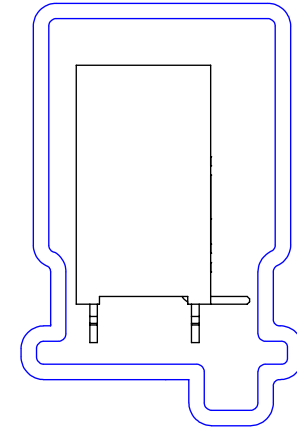
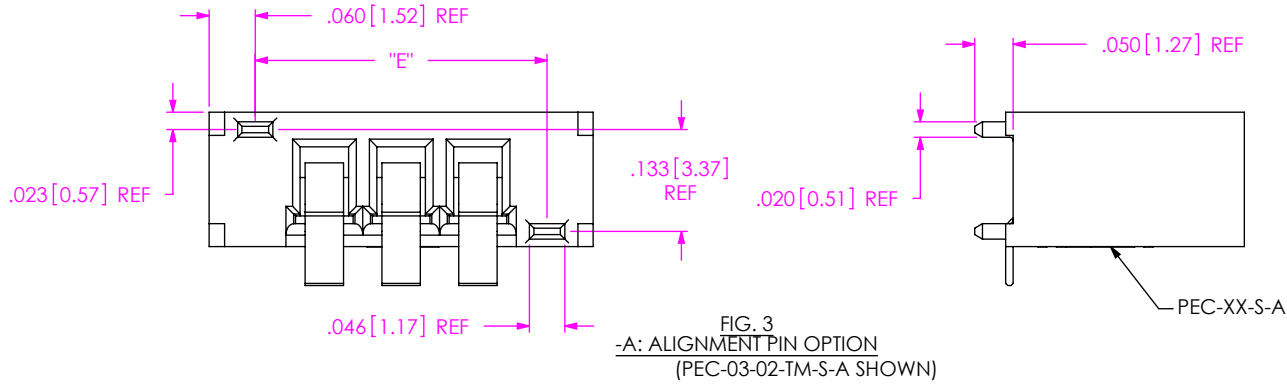
UNLESS OTHERWISE SPECIFIED, DIMENSIONS ARE IN INCHES. TOLERANCES ARE:
 DECIMALS ANGLES
 .XX: ±.01 [.3] 2°
 .XXX: ±.005 [.13]
 .XXXX: ±.0020 [.051]

PROPRIETARY NOTE
 THIS DOCUMENT CONTAINS INFORMATION CONFIDENTIAL AND PROPRIETARY TO SAMTEC, INC. AND SHALL NOT BE REPRODUCED OR TRANSFERRED TO OTHER DOCUMENTS OR DISCLOSED TO OTHERS OR USED FOR ANY PURPOSE OTHER THAN THAT WHICH IT WAS OBTAINED WITHOUT THE EXPRESSED WRITTEN CONSENT OF SAMTEC, INC.

samtec
 520 PARK EAST BLVD. NEW ALBANY, IN 47150
 PHONE: 812-944-6733 FAX: 812-948-5047
 e-Mail: info@SAMTEC.com code: 55322

DO NOT SCALE DRAWING SHEET SCALE: 4:1
 MATERIAL:
 INSULATOR: LCP, COLOR BLACK
 CONTACT: Alloy 7025 TM03 **E**

DESCRIPTION: POWER EDGE CARD ASSEMBLY
 DWG. NO. PEC-XX-XX-XX-S-XX



PROPRIETARY NOTE
THIS DOCUMENT CONTAINS INFORMATION
CONFIDENTIAL AND PROPRIETARY TO
SAMTEC, INC. AND SHALL NOT BE REPRODUCED
OR TRANSFERRED TO OTHER DOCUMENTS OR
DISCLOSED TO OTHERS OR USED FOR ANY
PURPOSE OTHER THAN THAT WHICH IT WAS
OBTAINED WITHOUT THE EXPRESSED WRITTEN
CONSENT OF SAMTEC, INC.

DO NOT SCALE DRAWING

SHEET SCALE: 4:1

samtec

520 PARK EAST BLVD, NEW ALBANY, IN 47150
PHONE: 812-944-6733 FAX: 812-948-5047
e-Mail: info@SAMTEC.com code: 55322

DESCRIPTION: POWER EDGE CARD ASSEMBLY

DWG. NO. PEC-XX-XX-XX-S-XX

BY: ERIC M 05/14/2001 SHEET 2 OF 2