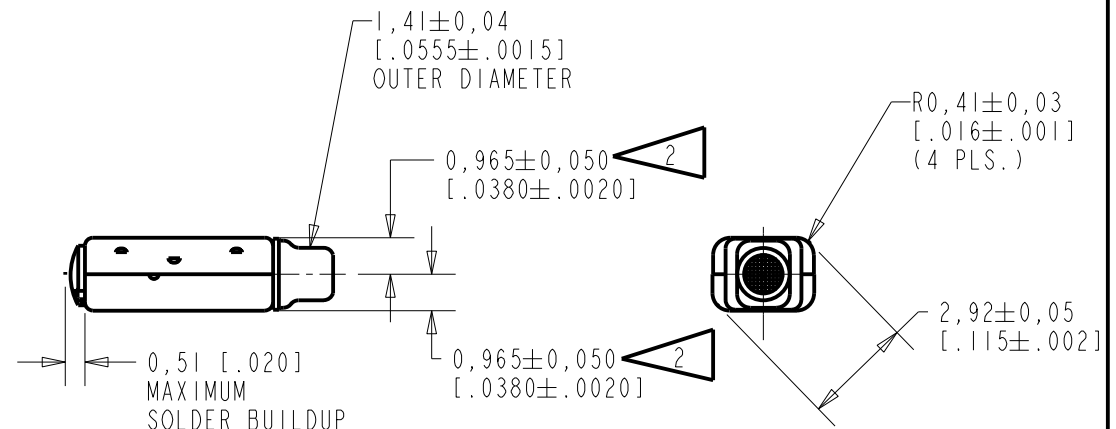
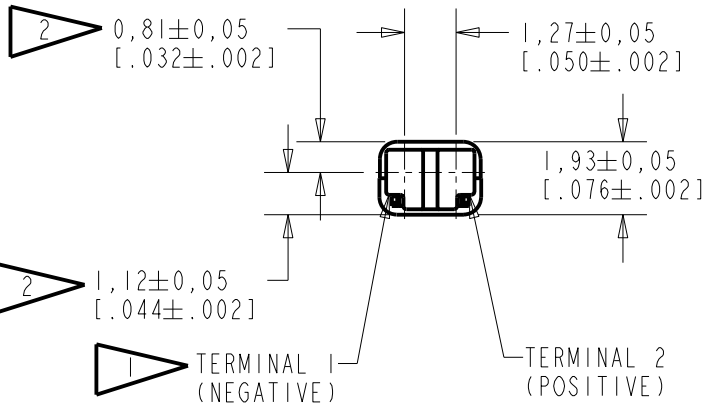
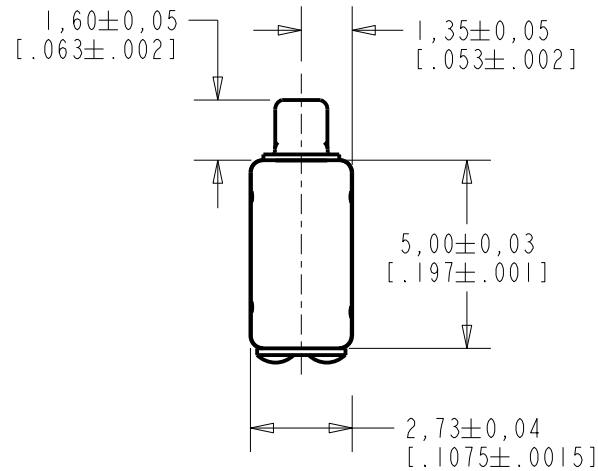


FK-26260-000

SHT 1.1

NOTES:

- 1 A POSITIVE GOING VOLTAGE AT TERMINAL 2, RELATIVE TO TERMINAL 1, CAUSES A DECREASE IN PRESSURE AT THE SOUND OUTLET.
- 2 LOCATED FROM TWO SURFACES FOR CUSTOMER CONVENIENCE. ONLY APPLICABLE FROM ONE SURFACE, NOT TO BE USED TOGETHER.

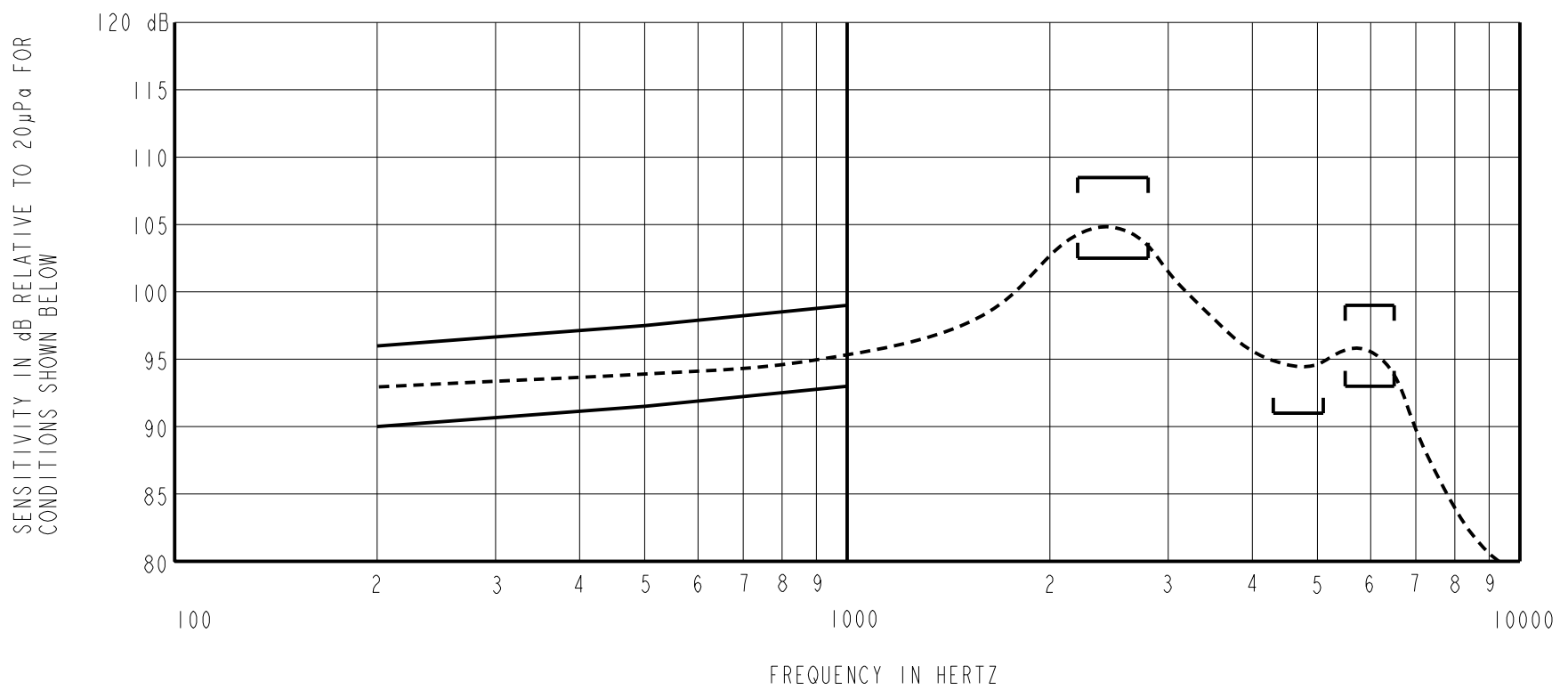


NOMINAL WEIGHT .11 GRAMS DIMENSIONS IN MILLIMETERS [INCHES]
SCALE 2:1

| Revision | C.O. # | Implementation Date | RELEASE LEVEL | REVISION |
|----------|-----------|---------------------|---------------|----------|
| E | C10114032 | 11-7-12 | Active | E |
| D | C10111598 | 8-17-10 | | |
| | | | | |

KNOWLES ELECTRONICS
ITASCA, ILLINOIS U.S.A.

| | | | |
|------------------------|--|---------------------|----------------------|
| SCALE: 5:1 | | DR. BY: MMM | DATE: 9-6-05 |
| DO NOT SCALE DRAWING | | | |
| TITLE: RECEIVER | | FK-26260-000 | |
| OUTLINE DRAWING | | SHT 1.1 | |
| | | APP. BY: GJP | DATE: 9-12-05 |
| | | APP. BY: GJP | DATE: 9-12-05 |



ACOUSTICAL

SENSITIVITY
DEVICE PRODUCE THE SPL LISTED BELOW UNDER TEST CONDITIONS IN TABLE 3.
NOMINAL SENSITIVITY AT 1KHz IS dB RELATIVE TO 20 µPa.

| FREQUENCY (Hz) | MINIMUM | NOMINAL | MAXIMUM |
|----------------|---------|---------|---------|
| 200 | 90.0 | 93.0 | 96.0 |
| 500 | 91.5 | 94.5 | 97.5 |
| 1000 | 92.5 | 95.5 | 98.5 |
| 2200-2800 | 102.5 | 110.5 | 108.5 |
| 4100-4900 | 91.0 | --- | --- |
| 5500-6500 | 93.0 | 96.3 | 99.5 |

PORT LOCATION: 12S

TABLE 1

TOTAL HARMONIC DISTORTION
DEVICE WILL NOT EXCEED TOTAL HARMONIC DISTORTION LEVELS LISTED BELOW.

| FREQUENCY (Hz) | AC DRIVE (mA rms) | DC BIAS (mA) | LIMIT (%) |
|----------------|-------------------|--------------|-----------|
| 800 | 0.84 | 0 | 5 |
| 2400 | 1.68 | 0 | 10 |

TABLE 2

TEST CONDITIONS

| | |
|------------------------|---|
| NOMINAL SOURCE VOLTAGE | 0.84 mA rms, 0 mA DC BIAS |
| SOURCE IMPEDANCE | <1 Ohm |
| TUBING | 10mm [.394"] LONG, 1mm [.039"] I.D. |
| COUPLER CAVITY | 2 CM ³ , SIMULATED ANSI S3.7 TYPE HA-3 (IEC 60318-5) |

TABLE 3

ELECTRICAL

| | |
|--------------------|----------------|
| DC RESISTANCE | 135 Ohms ± 10% |
| IMPEDANCE @ 500 Hz | 180 Ohms ± 15% |
| IMPEDANCE @ 1kHz | 240 Ohms ± 15% |

TABLE 4

ISOLATION: CASE WILL BE ELECTRICALLY ISOLATED FROM THE COIL CIRCUIT.

| Revision | C.O. # | Implementation Date | RELEASE LEVEL | REVISION |
|--|-----------|---------------------|-------------------------|----------|
| E | C10114032 | 11-7-12 | Active | E |
| D | C10111598 | 8-17-10 | | |
| | | | | |
| WHEN TEST LIMITS ARE USED TO ESTABLISH INCOMING INSPECTION ACCEPTANCE/REJECTION CRITERIA, CORRELATION OF TEST EQUIPMENT WITH KNOWLES IS ALSO REQUIRED FOR ELIMINATION OF EQUIPMENT AND TEST METHOD VARIATION | | | DR. BY | DATE |
| TITLE: RECEIVER PERFORMANCE SPECIFICATION | | | MMM | 9-6-05 |
| | | | FK-26260-000 SHT 2.1 | |
| | | | CK. BY | DATE |
| | | | GJP | 9-12-05 |
| | | | APP. BY | DATE |
| | | | GJP | 9-12-05 |

KNOWLES ELECTRONICS
ITASCA, ILLINOIS U.S.A.