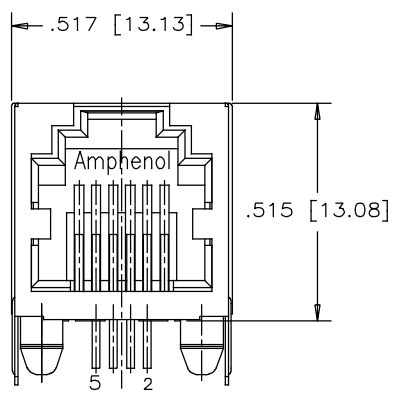
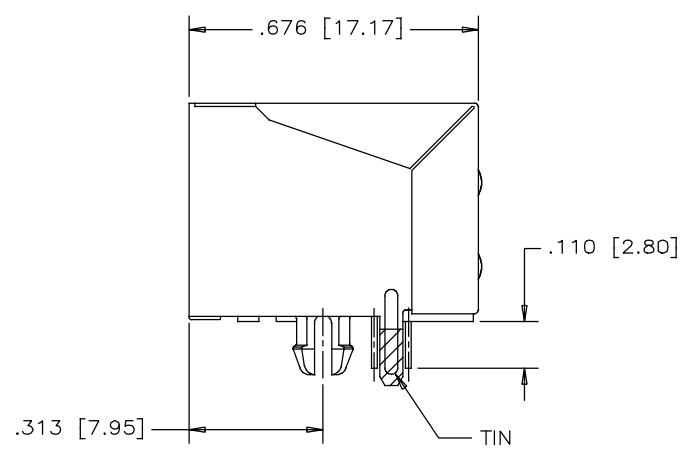


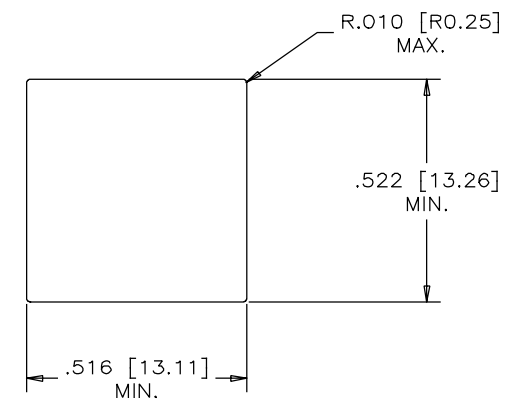
REVISIONS			
REV	DESCRIPTION, ECN, EAR NO.	DATE	APP'D
A	PROPOSAL	FEB21/14	L.CHAN
B	UPDATE TITLE	MAY07/14	L.CHAN



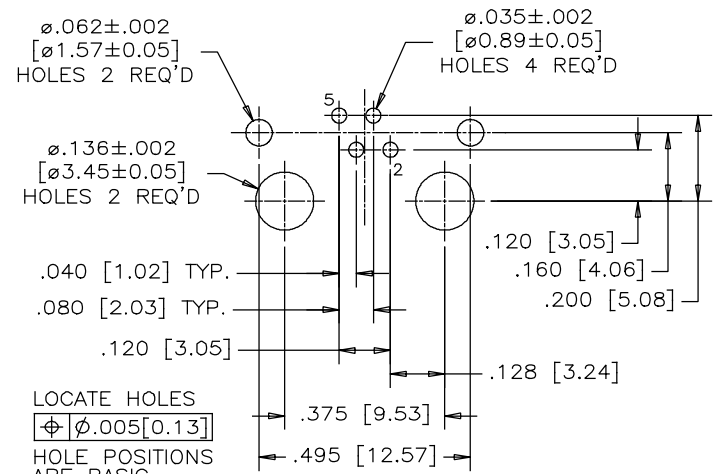
FRONT VIEW



SIDE VIEW



RECOMMENDED PANEL CUTOUT



RECOMMENDED P.C.B. LAYOUT
(COMPONENT SIDE OF BOARD)

MATERIALS:

PLASTIC HOUSING: HIGH TEMPERATURE THERMOPLASTIC
UL FLAMMABILITY 94V-0.
SOLDER REFLOW PROCESS COMPATIBLE

CONTACT: PHOSPHOR BRONZE, GOLD PLATED ON MATING AREA
OVER NICKEL, AND MATTE TIN ON TAILS.

CONTACT PLATING: 50 MICROINCHES [1.27 MICRONS] MINIMUM NICKEL.
6 MICROINCHES [0.15 MICRONS] MINIMUM GOLD ON MATING SURFACES.
100 MICROINCHES [2.54 MICRONS] MINIMUM MATTE TIN ON CONTACT TAILS.

SHIELD: COPPER ALLOY; NICKEL PLATED WITH TIN DIPPED PCB TAILS

RECOMMENDED SOLDERING TEMPERATURE:
WAVE SOLDERING OR REFLOW SOLDERING AT 260°C MAXIMUM
FOR 5 SEC MAXIMUM.

AMPHENOL PART NUMBER: RJE01-145-01



UNLESS SPECIFIED OTHERWISE	DRAWN FRANK.W	DATE FEB21/14
PRIMARY UNITS INCH	CHECKED L.CHAN	FEB21/14
SECONDARY MILLIMETER	M.E. APP'D	
REFERENCE IN PARENTHESES	Q.A. APP'D	
GENERAL TOLERANCES	DWG APPR.	
1 DECIMAL PLACE ±0.025	ENG. REL. NO.	
2 DECIMAL PLACES ±0.020	REF.	
3 DECIMAL PLACES ±0.015	THIRD ANGLE PROJECTION	
ANGULAR DEGREES ±1.0°	DO NOT SCALE DRAWING	

Amphenol Canada Corp.
www.amphenolcanada.com

TITLE: 1 PORT HIGH SPEED MODULAR JACK
6 POSITIONS, 4 CONTACTS, SHIELD WITH
PCB TAIL ONLY - RoHS COMPLIANT

DWG. NO. P-RJE01-145-01

CODE ID NO. 03554 DWG SIZE: C SCALE: N/A SHEET 1 OF 1