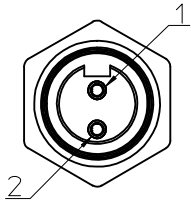
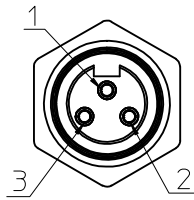


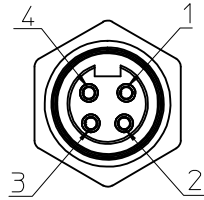
FACE VIEW - FEMALE INSERT SCALE 2 : 1



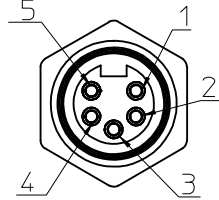
1 WHITE
2 BLACK



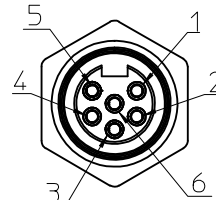
1 GREEN/YELLOW
2 BLACK
3 WHITE



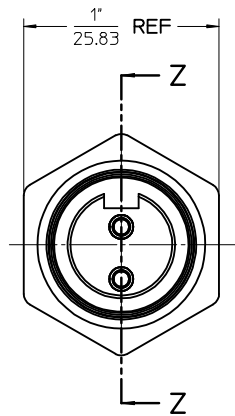
1 BLACK
2 WHITE
3 RED
4 GREEN/YELLOW



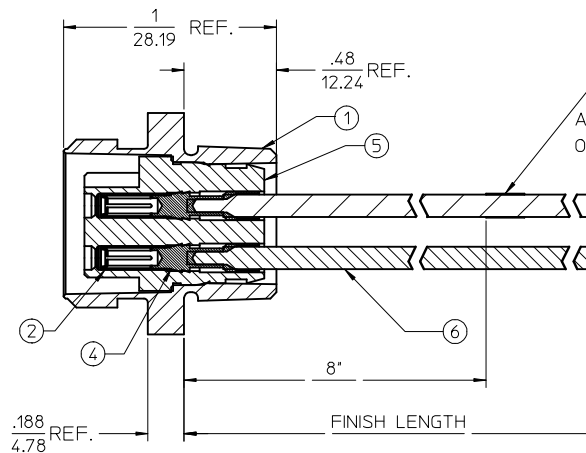
1 WHITE
2 RED
3 GREEN/YELLOW
4 ORANGE
5 BLACK



1 WHITE
2 RED
3 GREEN/YELLOW
4 ORANGE
5 BLACK
6 BLUE



FEMALE INSERT - FRONT VIEW



③ ATTACH TO GREEN/YELLOW (3-6 POLE)
OR WHITE LEAD (2-POLE)

FINAL ASSEMBLY
1300130060 (SHOWN)

| | | | | | | | | | | |
|--|----------------------------|-------------------------------|---------------------------------------|--|---------------------------------------|-----------------------------------|-------------------------|------------------------|------------------|---------------------------|
| ENTER DESCRIPTION EC NO: MNA2010-0057 DRAWN BY: NKUMAR01 2009/07/13 CHKD: JFMURPHY APPR: JFMURPHY 2009/08/10 REV: A | DESCRIPTION DESCRIPTION | QUALITY SYMBOLS ▽=0 ▽=0 | GENERAL TOLERANCES (UNLESS SPECIFIED) | | DIMENSION STYLE SECTION Z-Z | SCALE 2:1 | DESIGN UNITS INCH | THIRD ANGLE PROJECTION | | |
| | | | | | mm | INCH | DRAWN BY NKUMAR01 | | DATE 31/07/09 | MC 2P FR 12IN 16/1 PVC |
| | | | 4 PLACES ± --- | ± --- | ± --- | ± --- | CHECKED BY BWOODMAN | | DATE 31/07/09 | |
| | | | 3 PLACES ± --- | ± --- | ± --- | ± --- | APPROVED BY JFMURPHY | | DATE 31/07/09 | |
| 2 PLACES ± --- | ± --- | ± --- | ± --- | MATERIAL NO. SEE SHEET 2 | | DOCUMENT NO. SD-130013-060 | | | | |
| ANGULAR ±1/2° | | | | DRAFT WHERE APPLICABLE MUST REMAIN WITHIN DIMENSIONS | | SHEET NO. 1 OF 2 | | | | |
| THIS DRAWING CONTAINS INFORMATION THAT IS PROPRIETARY TO MOLEX INCORPORATED AND SHOULD NOT BE USED WITHOUT WRITTEN PERMISSION | | | | | | | | | | |


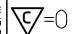
FEMALE RECEPTACLE ASSEMBLY

| | | | | |
|--------|--------|--------|--------|--------|
| 2 POLE | 3 POLE | 4 POLE | 5 POLE | 6 POLE |
|--------|--------|--------|--------|--------|

| Sl. No. | DESCRIPTION | MATERIAL | FINISH | QUANTITY | | | | |
|---------|-------------------------------|-----------------|--------------|----------|---|---|---|---|
| 1 | RECEPTACLE SHELL | ZINC DIECAST | BLACK E-COAT | 1 | 1 | 1 | 1 | 1 |
| 2 | SOCKET SLEEVE - TUBE | STAINLESS STEEL | PASSIVATED | 2 | 3 | 4 | 5 | 6 |
| 3 | LABEL | PLASTIC FILM | BLACK/YELLOW | 1 | 1 | 1 | 1 | 1 |
| 4 | SOCKET CONTACT 16AWG | COPPER ALLOY | GOLD PLATED | 2 | 3 | 4 | 5 | 6 |
| 5 | 2P FEM INSERT PVC A-SIZE | PVC | YELLOW | 1 | | | | |
| | 3P FEM INSERT PVC A-SIZE | PVC | YELLOW | | 1 | | | |
| | 4P FEM INSERT PVC A-SIZE | PVC | YELLOW | | | 1 | | |
| | 5P FEM INSERT PVC A-SIZE | PVC | YELLOW | | | | 1 | |
| 6 | #16-1 BLK PVC WIRE UL1015 | PVC JACKET | BLACK | 1 | 1 | 1 | 1 | 1 |
| | #16-1 BLU PVC WIRE UL1015 | PVC JACKET | BLUE | | | | | 1 |
| | #16-1 GRN/YEL PVC WIRE UL1015 | PVC JACKET | GREEN/YELLOW | | 1 | 1 | 1 | 1 |
| | #16-1 ORN PVC WIRE UL1015 | PVC JACKET | ORANGE | | | | 1 | 1 |
| | #16-1 RED PVC WIRE UL1015 | PVC JACKET | RED | | | 1 | 1 | 1 |
| | #16-1 WHT PVC WIRE UL1015 | PVC JACKET | WHITE | 1 | 1 | 1 | 1 | 1 |

| POLE COUNT | MAX. VOLTAGE RATING | MAX. CURRENT RATING |
|------------|---------------------|---------------------|
| 2 POLE | 600 VOLTS | 13 AMPS |
| 3 POLE | 600 VOLTS | 13 AMPS |
| 4 POLE | 600 VOLTS | 10 AMPS |
| 5 POLE | 600 VOLTS | 8 AMPS |
| 6 POLE | 600 VOLTS | 8 AMPS |

| PART NUMBER | DESCRIPTION | FINISHED LENGTH |
|-------------|---------------|----------------------------------|
| 1300130060 | 1R2004A20A120 | 12.0" +.75" -0 [0.3M +19.1MM -0] |
| 1300130067 | 1R2004A20F060 | 6.0' +2.19' -0 [1.8M +55.6MM -0] |
| 1300130135 | 1R3004A20A120 | 12.0" +.75" -0 [0.3M +19.1MM -0] |
| 1300130148 | 1R3004A20F060 | 6.0' +2.19' -0 [1.8M +55.6MM -0] |
| 1300130314 | 1R4004A20A120 | 12.0" +.75" -0 [0.3M +19.1MM -0] |
| 1300130325 | 1R4004A20F060 | 6.0' +2.19' -0 [1.8M +55.6MM -0] |
| 1300130442 | 1R5004A20A120 | 12.0" +.75" -0 [0.3M +19.1MM -0] |
| 1300130452 | 1R5004A20F060 | 6.0' +2.19' -0 [1.8M +55.6MM -0] |
| 1300130567 | 1R6004A20A120 | 12.0" +.75" -0 [0.3M +19.1MM -0] |
| 1300130576 | 1R6004A20F060 | 6.0' +2.19' -0 [1.8M +55.6MM -0] |

| | | | | | | | | | | | | | | | | | | | | |
|---|---|---|--|----|------|----------|--------|---------|----------|--------|---------|----------|--------|---------|---------|--------|---------|--|--|---|
| ENTER DESCRIPTION EC NO: MNA2010-0057 DRWN: NKUMAR01 2009/07/31 CHKD: APPR: JFMURPHY 2009/08/10 REV: A | QUALITY SYMBOLS  =0  =0 | GENERAL TOLERANCES (UNLESS SPECIFIED) <table border="1" style="width: 100%; border-collapse: collapse;"> <tr> <td></td> <td>mm</td> <td>INCH</td> </tr> <tr> <td>4 PLACES</td> <td>± .005</td> <td>± .0004</td> </tr> <tr> <td>3 PLACES</td> <td>± .005</td> <td>± .0004</td> </tr> <tr> <td>2 PLACES</td> <td>± .005</td> <td>± .0004</td> </tr> <tr> <td>1 PLACE</td> <td>± .005</td> <td>± .0004</td> </tr> </table> ANGULAR ±1/2° DRAFT WHERE APPLICABLE MUST REMAIN WITHIN DIMENSIONS | | mm | INCH | 4 PLACES | ± .005 | ± .0004 | 3 PLACES | ± .005 | ± .0004 | 2 PLACES | ± .005 | ± .0004 | 1 PLACE | ± .005 | ± .0004 | DIMENSION STYLE IN/MM DRAWN BY NKUMAR01 DATE 31/07/09 CHECKED BY BWOODMAN DATE 31/07/09 APPROVED BY JFMURPHY DATE 31/07/09 | SCALE 2:1 DESIGN UNITS INCH THIRD ANGLE PROJECTION | TITLE <p style="text-align: center; font-size: 1.2em;">MC 2P FR 12IN 16/1 PVC</p> MOLEX INCORPORATED MATERIAL NO. SEE CHART DOCUMENT NO. SD-130013-060 SHEET NO. 2 OF 2 |
| | mm | INCH | | | | | | | | | | | | | | | | | | |
| 4 PLACES | ± .005 | ± .0004 | | | | | | | | | | | | | | | | | | |
| 3 PLACES | ± .005 | ± .0004 | | | | | | | | | | | | | | | | | | |
| 2 PLACES | ± .005 | ± .0004 | | | | | | | | | | | | | | | | | | |
| 1 PLACE | ± .005 | ± .0004 | | | | | | | | | | | | | | | | | | |

| FACE VIEW-FEMALE INSERT | | | | |
|-------------------------|--|---|---|---|
| | | | | |
| 1-WHITE 2-BLACK | 1-GREEN / YELLOW 2-BLACK 3-WHITE | 1-BLACK 2-WHITE 3-RED 4-GREEN / YELLOW | 1-WHITE 2-RED 3-GREEN / YELLOW 4-ORANGE 5-BLACK | 1-WHITE 2-RED 3-GREEN / YELLOW 4-ORANGE 5-BLACK 6-BLUE |

PART NO. MATRIX

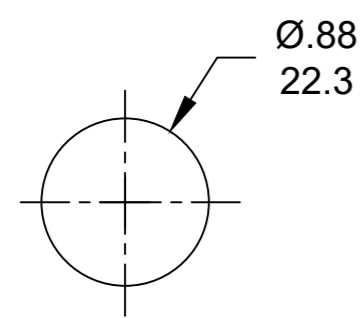
1R3004A20F020

↑ POLES 2-6 ↑ FINISHED LENGTH:
A120= 12 IN.
F020= 2 FEET
F100= 10 FEET

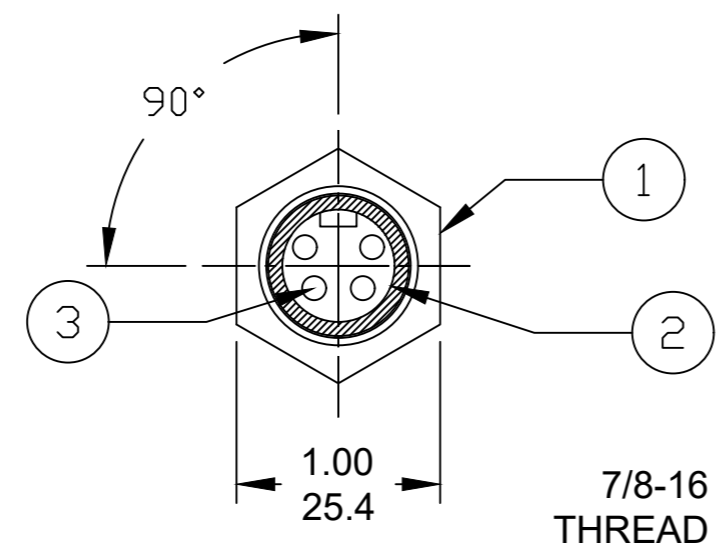
M005= 0.5 METER
M010= 1 METER
M100= 10 METER

CABLE LENGTH TOLERANCES

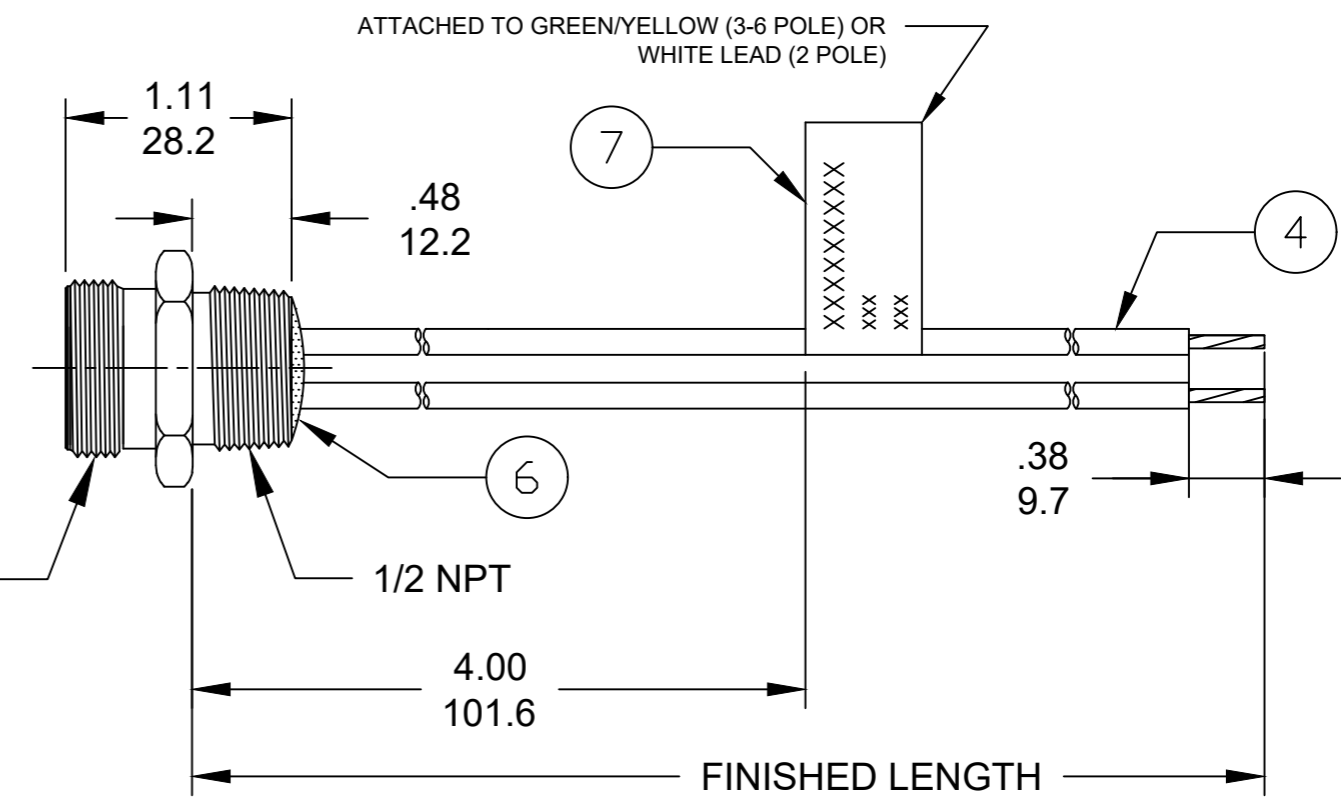
>.3M [1FT]: +19mm-0 [+.75in-0]
 .3 - .9M [1 - 3FT]: +44.5mm-0 [+1.75in-0]
 .9 - 1.8M [3 - 6FT]: +55.6mm-0 [+2.19in-0]
 1.8 - 3.7M [6 - 12FT]: +88.9mm-0 [+3.50in-0]
 3.7 - 7.3M [12 - 24FT]: +165.1mm-0 [+6.50in-0]
 7.3-14.6M [24 - 48FT]: +317.5mm-0 [+12.50in-0]
 14.6 - 30.5M [48-100FT]: +622.3mm-0 [+24.50in-0]
 OVER 30M [100FT] +2% OF FINISHED LENGTH



REF. KNOCKOUT HOLE



7/8-16
THREAD



ATTACHED TO GREEN/YELLOW (3-6 POLE) OR
WHITE LEAD (2 POLE)

- NOTES:
1. MATERIAL: SEE TABLE
 2. FINISH: SEE TABLE
 3. ELECTRICAL:
VOLTAGE: 2P THRU 6P 600V PER UL 2238
2 & 3P 500V PER IEC60664
4P 483V PER IEC60664
5 & 6P 400V PER IEC60664
CURRENT: 2P & 3P: 13A
4P: 10A
5P & 6P: 8A
 4. TEMP RATING: -20°TO +105°C
 5. PROTECTION: IP67 (WHEN MATED)
 6. UL RECOGNIZED, FILE: E152210
CSA CERTIFIED, FILE: LR6837 (B)
 7. ALL DIMENSIONS ARE FOR REFERENCE UNLESS TOLERANCED OR NOTED OTHERWISE

| PART NO | ENGINEERING NO. | FINISHED LENGTH |
|------------|-----------------|-------------------|
| 1300130060 | 1R2004A20A120 | 12 IN [0.3M] |
| 1300130148 | 1R3004A20F060 | 6 FT [1.8M] |
| 1300130457 | 1R5004A20F120 | 12 FT [3.6M] |
| 1300131011 | 1R6004A20M040 | 4.0M [13 FT 1 IN] |
| 1300130007 | 1R4004A20M060 | 6.0M [19 FT 8 IN] |

| ITEM | DESCRIPTION | MATERIAL | FINISH |
|------|------------------------|----------------|---------------|
| 6 | FLAG LABEL | VINYL | BLACK/YELLOW |
| 5 | POTTING MATERIAL | EPOXY | |
| 4 | WIRE, 16 AWG UL (1015) | PVC INSULATION | SEE FACE VIEW |
| 3 | CONTACT SOCKET | COPPER ALLOY | GOLD PLATED |
| 2 | FEMALE INSERT | TPE | YELLOW (B) |
| 1 | RECEPTACLE SHELL | ZINC DIE-CAST | BLACK |

THIS DRAWING CONTAINS INFORMATION THAT IS PROPRIETARY TO MOLEX ELECTRONIC TECHNOLOGIES, LLC AND SHOULD NOT BE USED WITHOUT WRITTEN PERMISSION

FUNCTIONAL SYMBOLS: F/A=0, F/C=0, F/P=0

DIMENSION UNITS: INCH/MM, SCALE: ---

GENERAL TOLERANCES (UNLESS SPECIFIED): 4 PLACES ±--- ±---, 3 PLACES ±--- ±---, 2 PLACES ±--- ±---, 1 PLACE ±--- ±---, 0 PLACES ±--- ±---

ANGULAR TOL ± 0.5 °

DRAFT WHERE APPLICABLE MUST REMAIN WITHIN DIMENSIONS

THIRD ANGLE PROJECTION

DRAWING: B-SIZE, SERIES: 130066

EC NO: 641453
DRWN: ABENJAMINLW 2020/05/21
CHK'D: RSTONE 2020/07/20
APPR: BWOODMAN 2020/07/27

INITIAL REVISION:
DRWN: RSTONE 2016/12/05
APPR: BWOODMAN 2017/01/16

DOCUMENT NUMBER: SD-130013-121, DOC TYPE: PSD, DOC PART: 001, REVISION: B

MATERIAL NUMBER: SEE_CHART, CUSTOMER: GENERAL MARKET, SHEET NUMBER: 1 OF 1

molex

MINI-CHANGE RECEPTACLE, A-SIZE
2-6P, FEMALE, STRAIGHT, SINGLE KEY,
16 AWG

PRODUCT CUSTOMER DRAWING