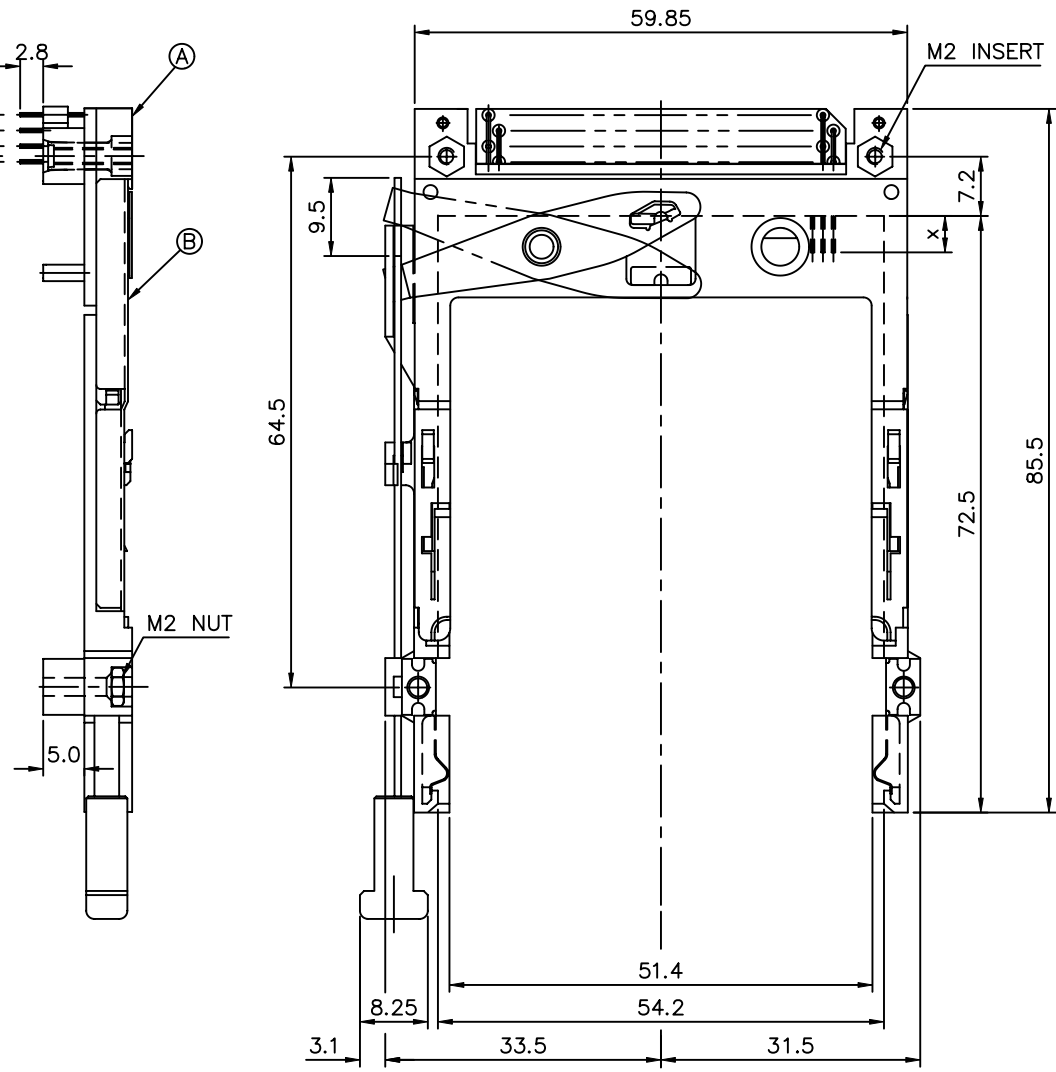


PRODUCT NO.
61573-150CA

Tous droits strictement réservés. Reproduction ou communication à des tiers interdite sans autorisation écrite du propriétaire.
Droits de reproduction BERG ELECTRONICS by

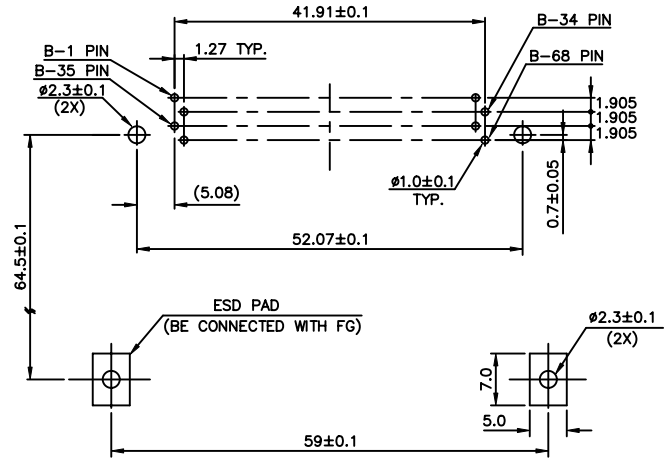
All rights strictly reserved. Reproduction or issue to third parties in any form without written authority from the proprietor.
Copyright BERG ELECTRONICS by



NOTES:

- EJECT FORCE : 3.5 Kg MAX.
- EJECT TRAVEL: 8.0mm
- MATERIAL
 - PART A (HEADER ASS'Y)
PLASTIC : HOUSING ...LCP UL94V-O BLACK
LOCATOR ...G.F. 6/6 NYLON UL94-VO BLACK
PIN : PHOSPHOR BRONZE
 - PART B (EJECT MECHANISM ASS'Y)
PLASTIC : GUIDE: POLYPHTHARAMID UL94V-O BLACK
BUTTON: POLYPHTHARAMID UL94V-O BLACK
PLATE : STAINLESS
EMI CONTACT: PHOSPHOR BRONZE
- FINISH (PIN)
UNDER PLATING : 0.5 μm MIN. Ni
CONTACT AREA : 0.1 μm MIN. GOLD OVER 0.5 μm MIN. Pd-Ni
SOLDER TAIL : 2.5 μm MIN. Sn-Pb
- DIM "X"

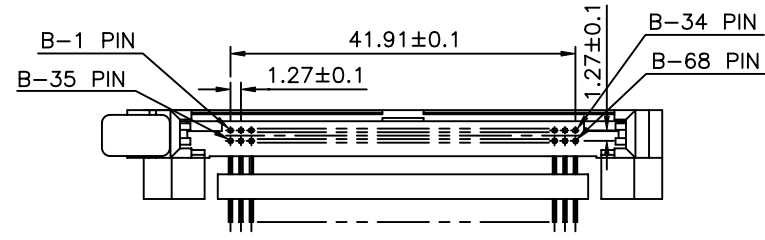
4.25±0.1	3.5±0.1	5.0±0.1
OTHERS	36,67	1,17,34,35,51,68



4 CARD INSERTION DIRECTION

USE THE FOLLOWING P/N FOR OFFICIAL ORDERING

B	EJECT MECH ASS'Y	95627-15CA
A	HDR ASS'Y	92856-020
DESCRIPTION	P/N	

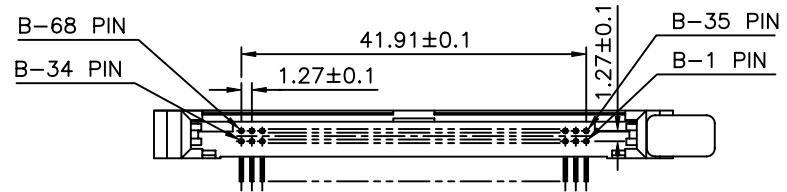
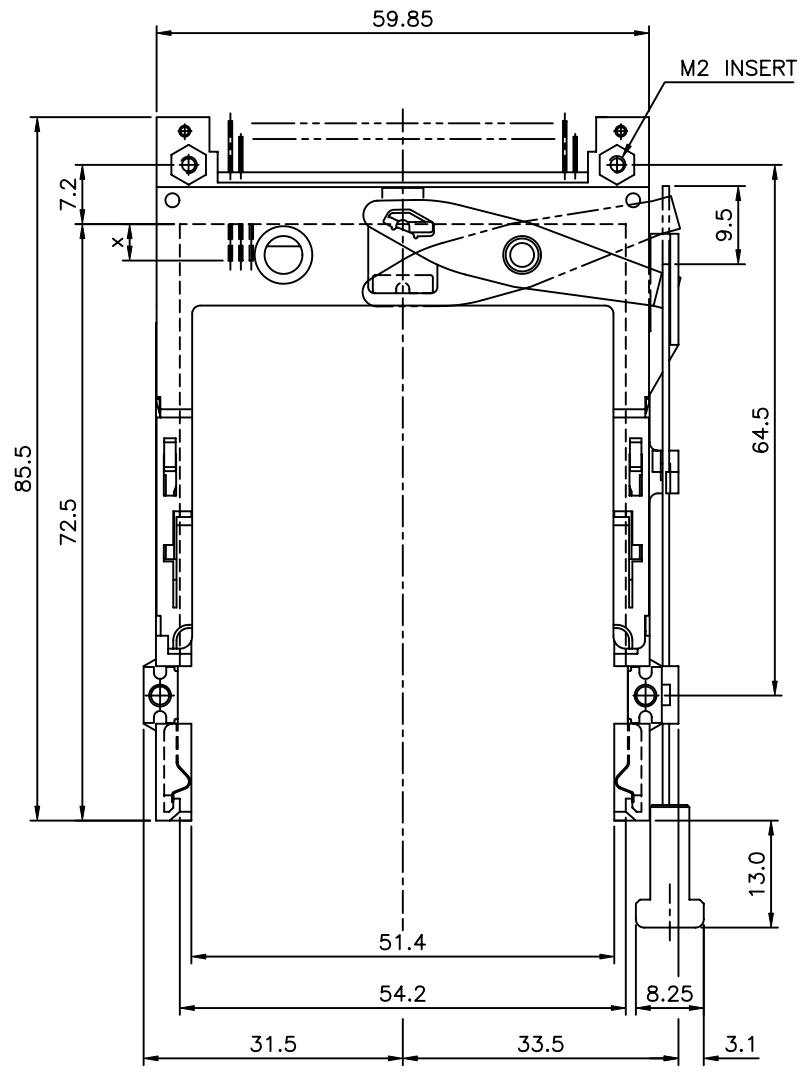
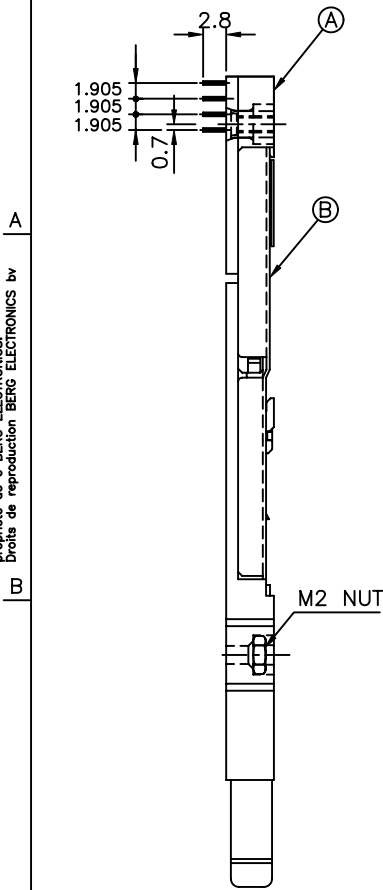


mat'l code		tolerance unless otherwise specified		CUSTOMER COPY	ELECTRONICS					
rev. ecn no. dr date		linear ±0.30		projection	FCI					
B	T70083	C M	03/03/97	⊕	title					
C	T70304	W L	07/20/97		NARROW BODY FRONT EJECT TYPE 1/2/3 EJECTOR ASS'Y					
D	T80430	W L	09/24/98	angles ± 2°	product family : PCMCIA					
E	T80516	W L	11/10/98	dr SHIRLEY HSU 09/03/96	unit	code				
F	T90015	W L	01/14/99	engr JOSEPH HSIA 09/03/96	mm/inch	TWN				
G	T90291	W L	08/05/99	chr JOSEPH HSIA 09/03/96	scale	sheet				
H	T00133	W L	05/04/00	appd JENN TSAO 09/03/96	1.5:1	1 OF 9				
sheet	revision	H	G	G	G	G	G	H		
index	sheet	1	2	3	4	5	6	7	8	9

PRODUCT NO.
61573-600CA

Tous droits strictement réservés. Reproduction ou communication à des tiers sans autorisation écrite du propriétaire.
Droits de reproduction BERG ELECTRONICS by

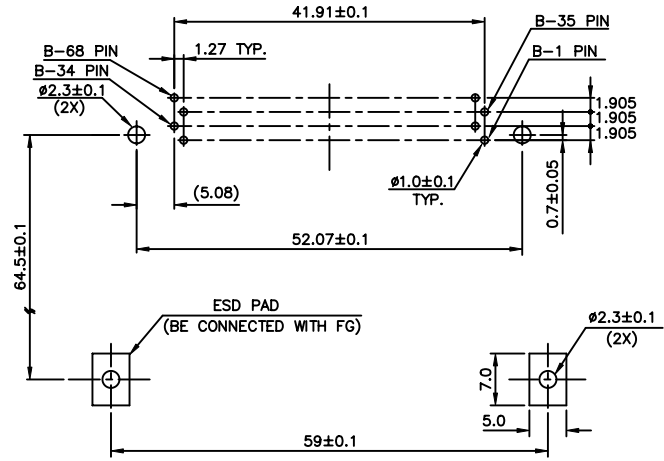
All rights strictly reserved. Reproduction or issue to third parties in any form without written authority from the proprietor.
Copyright BERG ELECTRONICS by



NOTES:

- EJECT FORCE : 3.5 Kg MAX.
- EJECT TRAVEL: 8.0mm
- MATERIAL
 - PART A (HEADER ASS'Y)
PLASTIC : HOUSING ...LCP UL94V-0 BLACK
PIN : PHOSPHOR BRONZE
 - PART B (EJECT MECHANISM ASS'Y)
PLASTIC : GUIDE: POLYPHTHARAMID UL94V-0 BLACK
BUTTON: POLYPHTHARAMID UL94V-0 BLACK
PLATE : STAINLESS
EMI CONTACT: PHOSPHOR BRONZE
- FINISH (PIN)
UNDER PLATING : 0.5 μm MIN. Ni
CONTACT AREA : 0.1 μm MIN. GOLD OVER 0.5 μm MIN. Pd-Ni
SOLDER TAIL : 2.5 μm MIN. Sn-Pb
- DIM "X"

4.25±0.1	3.5±0.1	5.0±0.1
OTHERS	36,67	1,17,34,35,51,68



4 CARD INSERTION DIRECTION

USE THE FOLLOWING P/N FOR OFFICIAL ORDERING

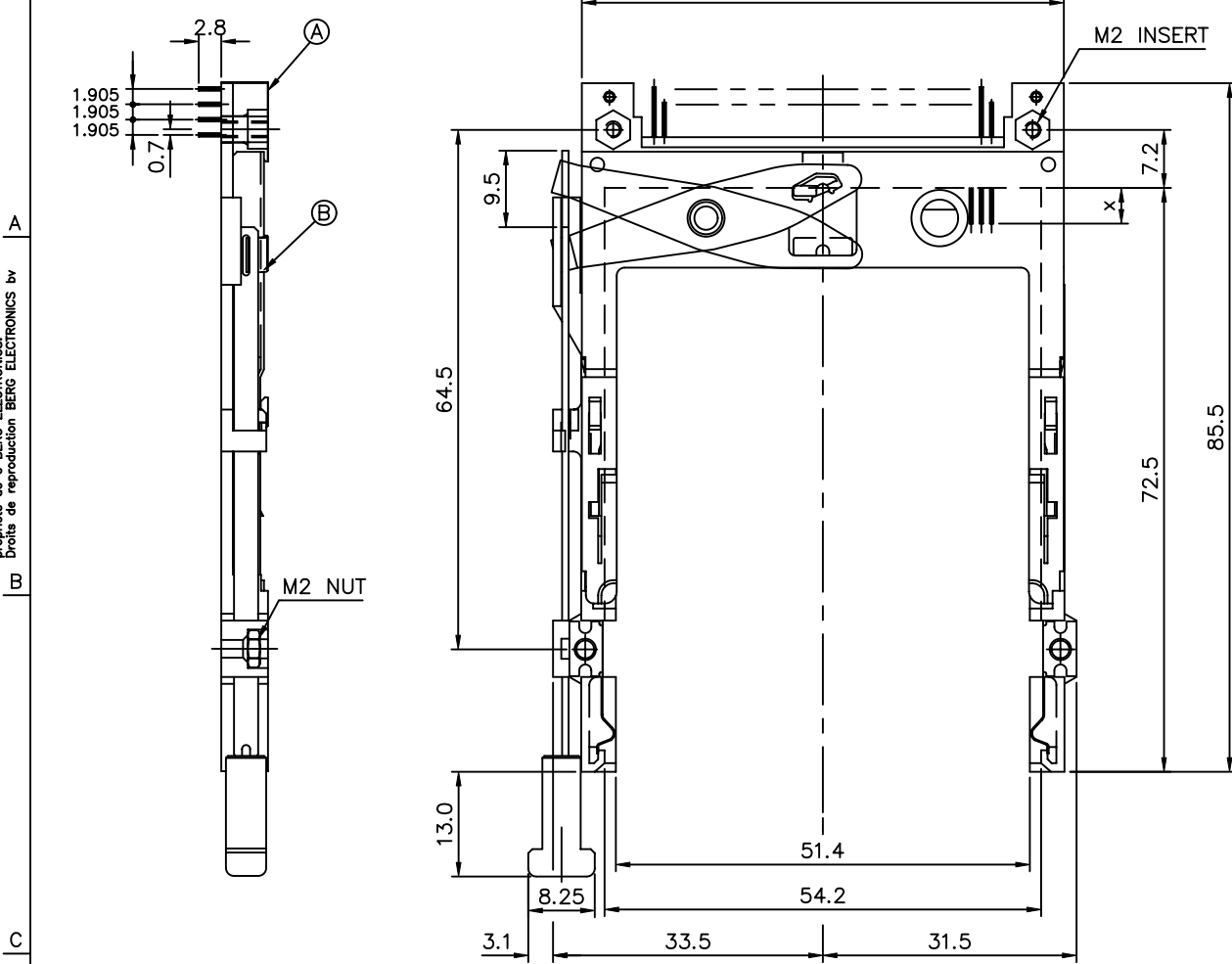
B	EJECT MECH ASS'Y	95627-00CA
A	HDR ASS'Y	92856-500
DESCRIPTION	P/N	

mat'l code		tolerance unless otherwise specified		CUSTOMER COPY		FCI ELECTRONICS	
rev.	ecn no.	dr	date	linear	±0.30	projection	title
G				angles	± 2°		NARROW BODY FRONT EJECT TYPE 1/2/3 EJECTOR ASS'Y
				dr	SHIRLEY HSU 09/03/96	unit	product family : PCMCIA
				enr	JOSEPH HSIA 09/03/96	mm/inch	code
				chr	JOSEPH HSIA 09/03/96	scale	TWN
				appd	JENN TSAO 09/03/96	1.5:1	sheet
sheet	revision						2 OF
index	sheet						

PRODUCT NO.
61573-500CA

Tous droits strictement réservés. Reproduction ou communication à des tiers sans autorisation écrite du propriétaire. Droits de reproduction BERG ELECTRONICS by

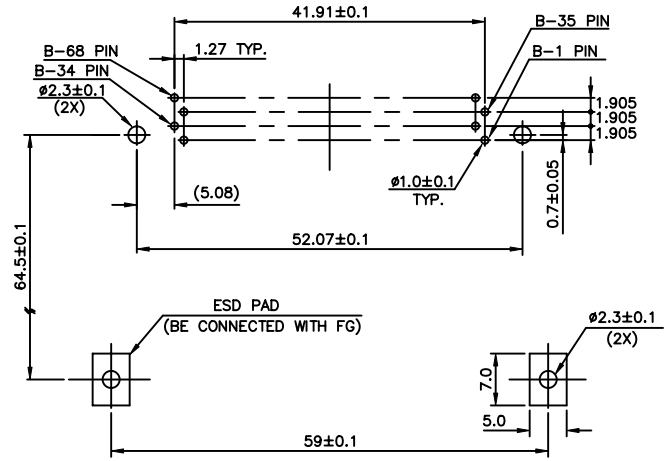
All rights strictly reserved. Reproduction or issue to third parties in any form without written authority from the proprietor. Property of BERG ELECTRONICS. Copyright BERG ELECTRONICS by



NOTES:

- EJECT FORCE : 3.5 Kg MAX.
- EJECT TRAVEL: 8.0mm
- MATERIAL
- 3.1 PART (A) (HEADER ASS'Y)
PLASTIC :HOUSING ...LCP UL94V-0 BLACK
PIN :PHOSPHOR BRONZE
- 3.2 PART (B) (EJECT MECHANISM ASS'Y)
PLASTIC :GUIDE:POLYPHTHARAMID UL94V-0 BLACK
:BUTTON:POLYPHTHARAMID UL94V-0 BLACK
PLATE :STAINLESS
EMI CONTACT:PHOSPHOR BRONZE
4. FINISH (PIN)
UNDER PLATING :0.5 um MIN. Ni
CONTACT AREA :0.1 um MIN. GOLD OVER 0.5 um MIN. Pd-Ni
SOLDER TAIL : 2.5 um MIN. Sn-Pb
5. DIM "X"

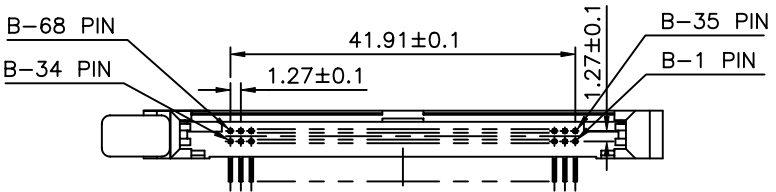
4.25±0.1	3.5±0.1	5.0±0.1
OTHERS	36,67	1,17,34,35,51,68



4 CARD INSERTION DIRECTION

USE THE FOLLOWING P/N FOR OFFICIAL ORDERING

(B)	EJECT MECH ASS'Y	95627-10CA
(A)	HDR ASS'Y	92856-500
DESCRIPTION	P/N	

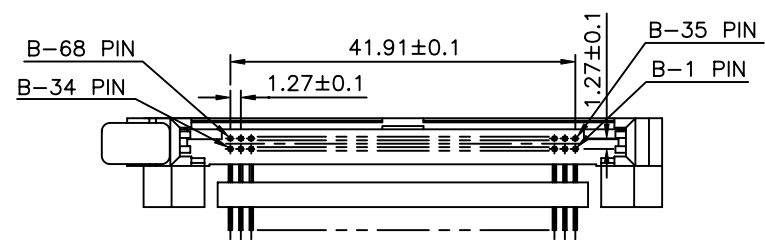
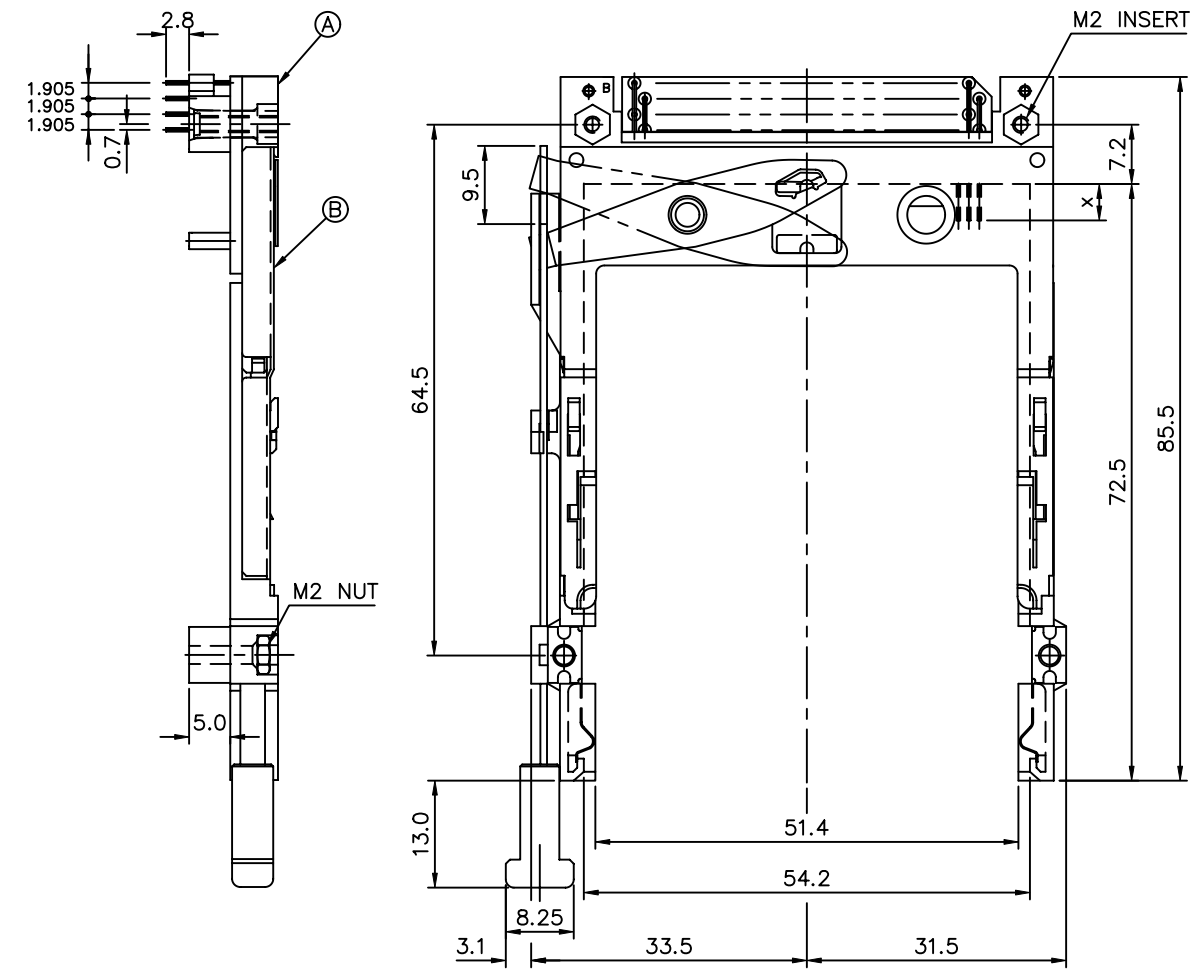


mat'l code				tolerance unless otherwise specified		CUSTOMER COPY	FCI ELECTRONICS		
rev.	ecn no.	dr	date	linear	±0.30	projection	title		
G				angles	± 2°		NARROW BODY FRONT EJECT TYPE 1/2/3 EJECTOR ASS'Y		
				dr	SHIRLEY HSU 09/03/96	unit	product family : PCMCIA code		
				enr	JOSEPH HSIA 09/03/96	mm/inch	TWN		
				chr	JOSEPH HSIA 09/03/96	scale	sheet		
				appd	JENN TSAO 09/03/96	1.5:1	3 of		
sheet		revision							
index		sheet							

PRODUCT NO.
61573-550CA

Tous droits strictement réservés. Reproduction ou communication à des tiers sans autorisation écrite du propriétaire. Droits de reproduction BERG ELECTRONICS by

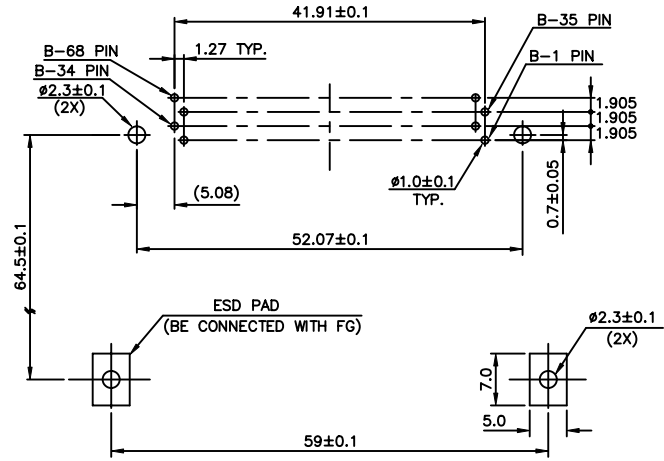
All rights strictly reserved. Reproduction or issue to third parties in any form without written authority from the proprietor. Copyright BERG ELECTRONICS by



NOTES:

1. EJECT FORCE : 3.5 Kg MAX.
2. EJECT TRAVEL: 8.0mm
3. MATERIAL
 - 3.1 PART Ⓐ (HEADER ASS'Y)
 - PLASTIC : HOUSING ...LCP UL94V-O BLACK
 - LOCATOR ...G.F. 6/6 NYLON UL94-V0 BLACK
 - PIN : PHOSPHOR BRONZE
 - 3.2 PART Ⓑ (EJECT MECHANISM ASS'Y)
 - PLASTIC : GUIDE: POLYPHTHARAMID UL94V-O BLACK
 - BUTTON: POLYPHTHARAMID UL94V-O BLACK
 - PLATE : STAINLESS
 - EMI CONTACT: PHOSPHOR BRONZE
4. FINISH (PIN)
 - UNDER PLATING : 0.5 um MIN. Ni
 - CONTACT AREA : 0.1 um MIN. GOLD OVER 0.5 um MIN. Pd-Ni
 - SOLDER TAIL : 2.5 um MIN. Sn-Pb
5. DIM "X"

4.25±0.1	3.5±0.1	5.0±0.1
OTHERS	36,67	1,17,34,35,51,68



4 CARD INSERTION DIRECTION

USE THE FOLLOWING P/N FOR OFFICIAL ORDERING

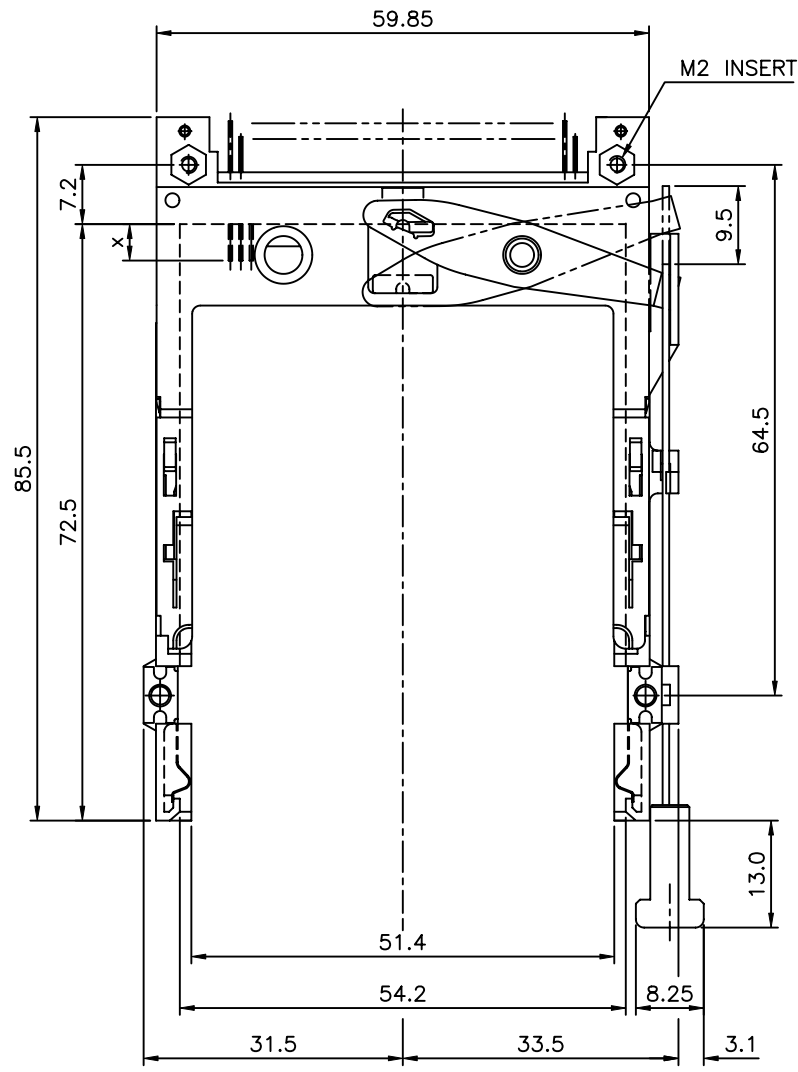
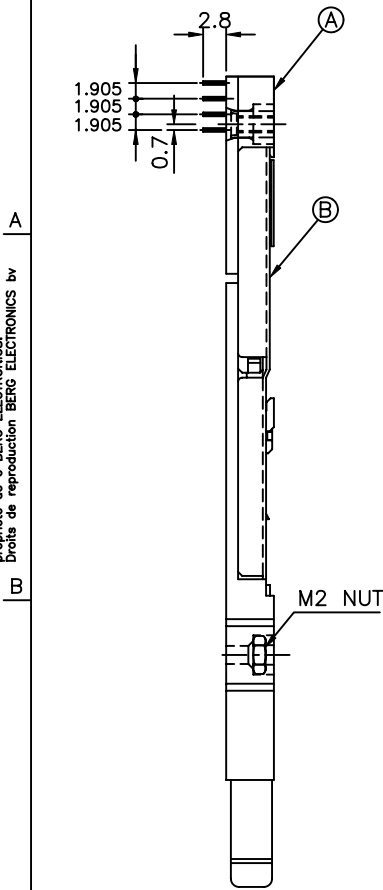
Ⓑ	EJECT MECH ASS'Y	95627-15CA
Ⓐ	HDR ASS'Y	92856-520
DESCRIPTION	P/N	

mat'l code		tolerance unless otherwise specified		CUSTOMER COPY	FCI ELECTRONICS		
rev.	ecn no.	dr	date	linear	±0.30	projection	
G				angles	± 2°	⊕	
				dr	WENDY CHEN 07/20/97	unit	
				enr	JOSEPH HSIA 07/20/97	mm/inch	
				chr	JOSEPH HSIA 07/20/97	scale	
				appd	JENN TSAO 07/20/97	1.5:1	
sheet	revision					product family : PCMCIA	code
index	sheet					size	TWN
						A3	4 of 4
						61573	

PRODUCT NO.
61573-000CA

Tous droits strictement réservés. Reproduction ou communication à des tiers sans autorisation écrite du propriétaire.
Droits de reproduction BERG ELECTRONICS by

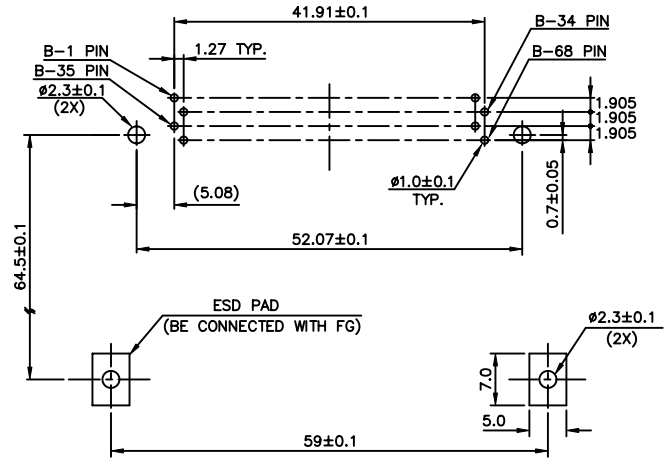
All rights strictly reserved. Reproduction or issue to third parties in any form without the written authority from the proprietor.
Copyright BERG ELECTRONICS by



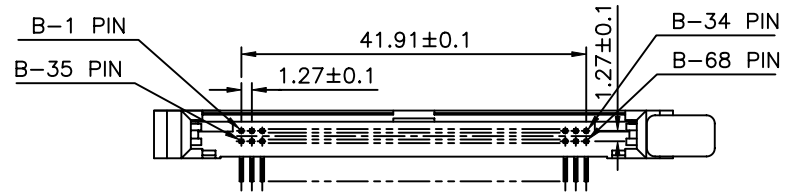
NOTES:

- EJECT FORCE : 3.5 Kg MAX.
- EJECT TRAVEL: 8.0mm
- MATERIAL
 - PART A (HEADER ASS'Y)
PLASTIC : HOUSING ...LCP UL94V-0 BLACK
PIN : PHOSPHOR BRONZE
 - PART B (EJECT MECHANISM ASS'Y)
PLASTIC : GUIDE: POLYPHTHARAMID UL94V-0 BLACK
BUTTON: POLYPHTHARAMID UL94V-0 BLACK
PLATE : STAINLESS
EMI CONTACT: PHOSPHOR BRONZE
- FINISH (PIN)
UNDER PLATING : 0.5 um MIN. Ni
CONTACT AREA : 0.1 um MIN. GOLD OVER 0.5 um MIN. Pd-Ni
SOLDER TAIL : 2.5 um MIN. Sn-Pb
- DIM "X"

4.25±0.1	3.5±0.1	5.0±0.1
OTHERS	36,67	1,17,34,35,51,68



4 CARD INSERTION DIRECTION



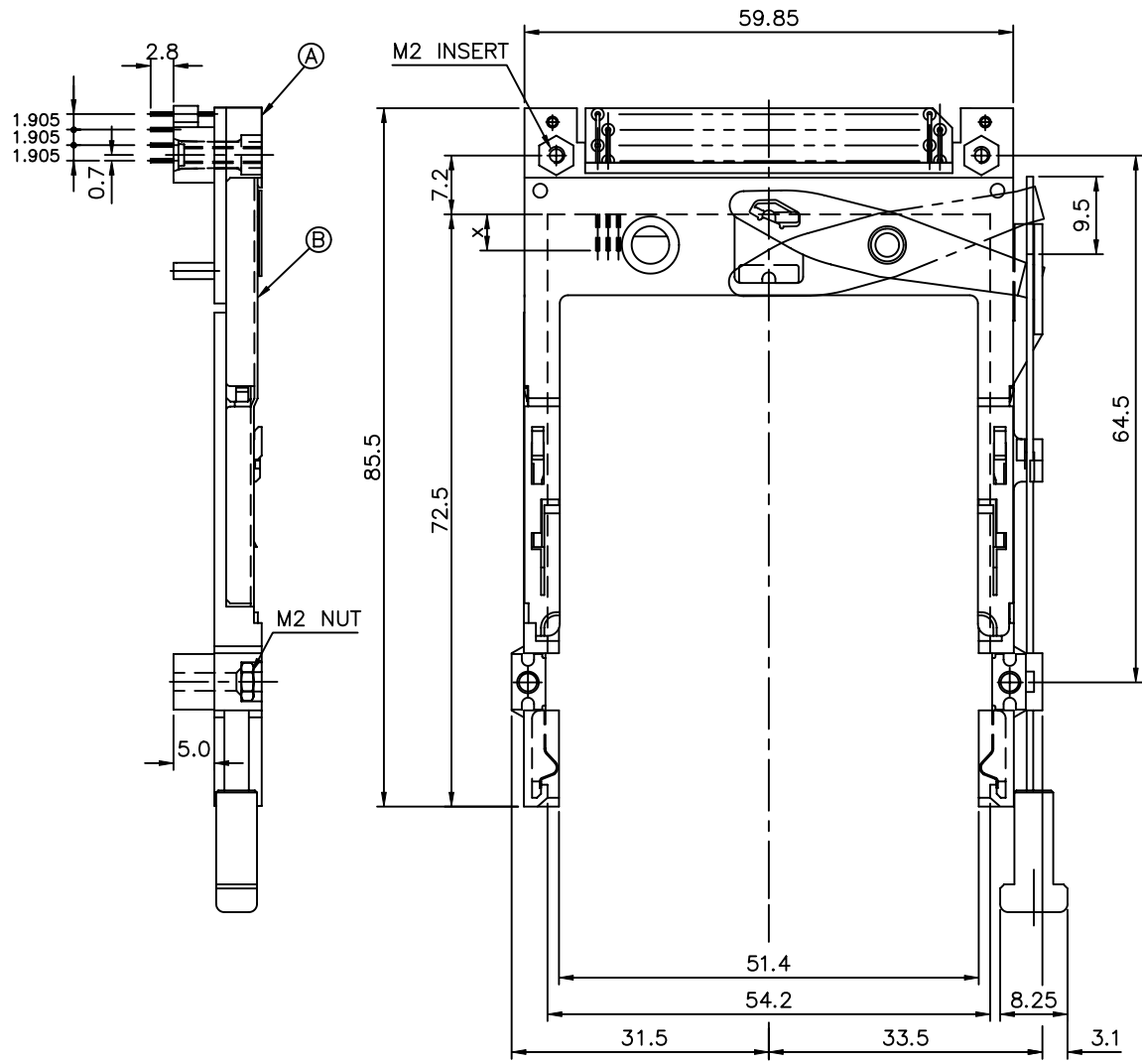
USE THE FOLLOWING P/N FOR OFFICIAL ORDERING

B	EJECT MECH ASS'Y	95627-00CA
A	HDR ASS'Y	92856-000
DESCRIPTION	P/N	

mat'l code		tolerance unless otherwise specified		CUSTOMER COPY	FCI ELECTRONICS	
rev.	ecn no.	dr	date	linear	±0.30	projection
G				angles	± 2°	title
				dr WENDY CHEN	09/15/98	NARROW BODY FRONT EJECT TYPE 1/2/3 EJECTOR ASS'Y
				enr JOSEPH HSIA	09/15/98	product family : PCMCIA
				chr JOSEPH HSIA	09/15/98	code
				appd JENN TSAO	09/15/98	TWN
						sheet
						5 of
sheet	revision					
index	sheet					

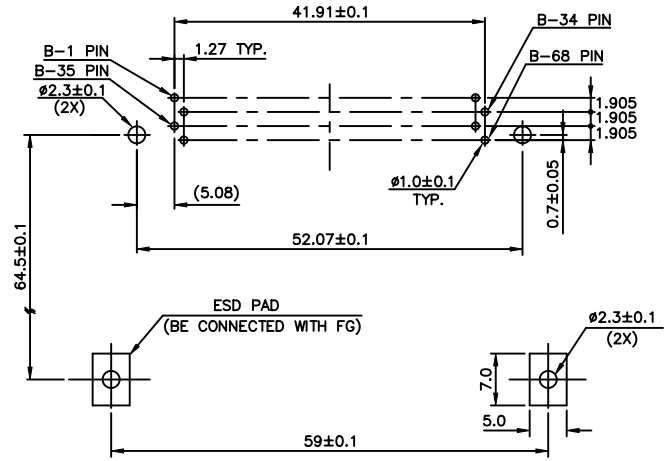
PRODUCT NO.
61573-050CA

Tous droits strictement réservés. Reproduction ou communication à des tiers sans autorisation écrite du propriétaire. Droits de reproduction BERG ELECTRONICS by
 All rights strictly reserved. Reproduction or issue to third parties in any form without the written authority from the proprietor. Property of BERG ELECTRONICS. Copyright BERG ELECTRONICS by

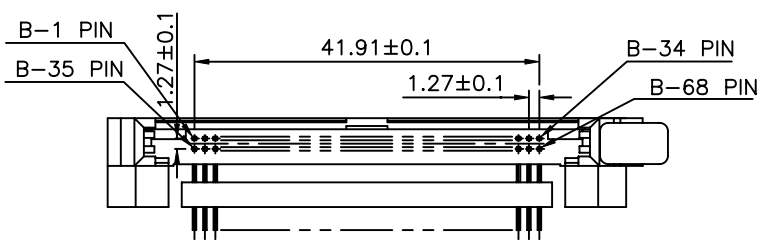


- NOTES:
- EJECT FORCE : 3.5 Kg MAX.
 - EJECT TRAVEL: 8.0mm
 - MATERIAL
 - PART A (HEADER ASS'Y)
 PLASTIC : HOUSING ...LCP UL94V-O BLACK
 : LOCATOR ...G.F. 6/6 NYLON UL94-VO BLACK
 PIN : PHOSPHOR BRONZE
 - PART B (EJECT MECHANISM ASS'Y)
 PLASTIC : GUIDE: POLYPHTHARAMID UL94V-O BLACK
 : BUTTON: POLYPHTHARAMID UL94V-O BLACK
 PLATE : STAINLESS
 EMI CONTACT: PHOSPHOR BRONZE
 - FINISH (PIN)
 UNDER PLATING : 0.5 μm MIN. Ni
 CONTACT AREA : 0.1 μm MIN. GOLD OVER 0.5 μm MIN. Pd-Ni
 SOLDER TAIL : 2.5 μm MIN. Sn-Pb
 - DIM "X"

4.25±0.1	3.5±0.1	5.0±0.1
OTHERS	36,67	1,17,34,35,51,68



4 CARD INSERTION DIRECTION



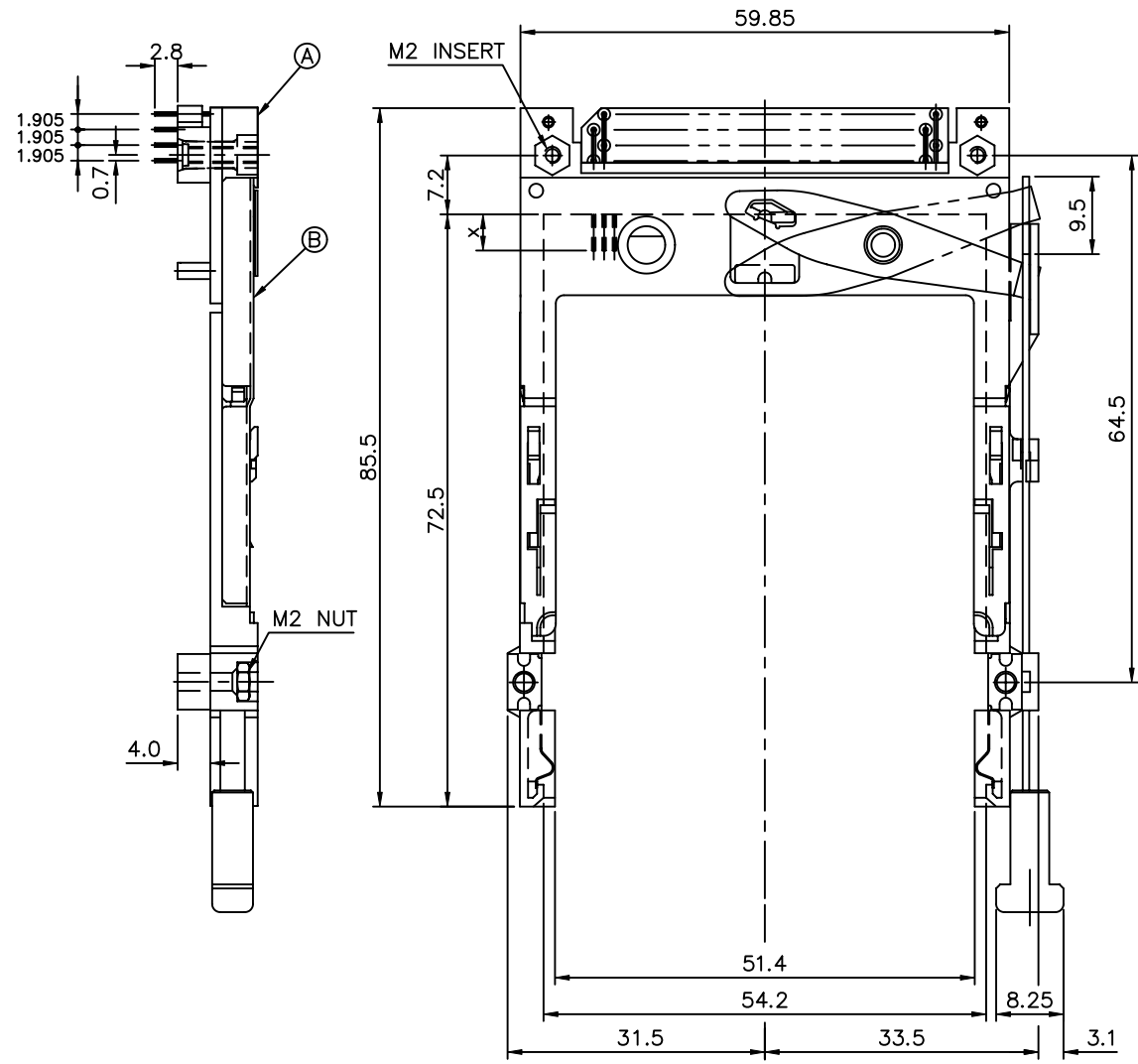
USE THE FOLLOWING P/N FOR OFFICIAL ORDERING

B	EJECT MECH ASS'Y	95627-05CA
A	HDR ASS'Y	92856-020
DESCRIPTION	P/N	

mat'l code		tolerance unless otherwise specified		CUSTOMER COPY		
rev.	ecn no.	dr	date	linear	±0.30	projection
G				angles	± 2°	
				dr WENDY CHEN 11/10/98	unit	title
				enr JOSEPH HSIA 11/10/98	mm/inch	NARROW BODY FRONT EJECT TYPE 1/2/3 EJECTOR ASS'Y
				chr JOSEPH HSIA 11/10/98	scale	product family : PCMCIA
				appd JENN TSAO 11/10/98	1.5:1	code
					A3	TWN
					61573	sheet
						6 OF
sheet	revision					
index	sheet					

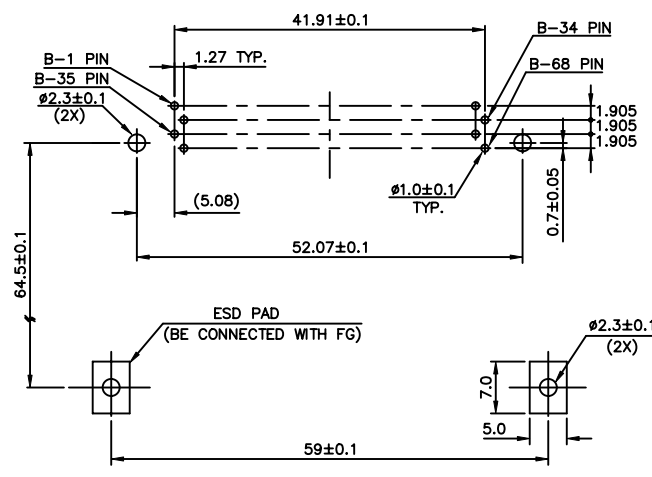
PRODUCT NO.
61573-040CA

Tous droits strictement réservés. Reproduction ou communication à des tiers interdite sans autorisation écrite du propriétaire.
 Property of BERG ELECTRONICS.
 Copyright BERG ELECTRONICS by

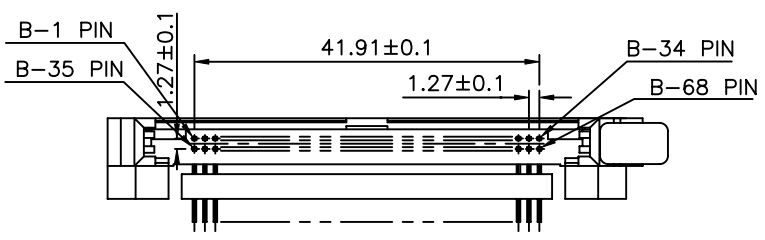


- NOTES:
- EJECT FORCE : 3.5 Kg MAX.
 - EJECT TRAVEL: 8.0mm
 - MATERIAL
 - PART A (HEADER ASS'Y)
 PLASTIC : HOUSING ...LCP UL94V-O BLACK
 LOCATOR ...G.F. 6/6 NYLON UL94-VO BLACK
 PIN : PHOSPHOR BRONZE
 - PART B (EJECT MECHANISM ASS'Y)
 PLASTIC : GUIDE: POLYPHTHARAMID UL94V-O BLACK
 BUTTON: POLYPHTHARAMID UL94V-O BLACK
 PLATE : STAINLESS
 EMI CONTACT: PHOSPHOR BRONZE
 - FINISH (PIN)
 UNDER PLATING : 0.5 μm MIN. Ni
 CONTACT AREA : 0.1 μm MIN. GOLD OVER 0.5 μm MIN. Pd-Ni
 SOLDER TAIL : 2.5 μm MIN. Sn-Pb
 - DIM "X"

4.25±0.1	3.5±0.1	5.0±0.1
OTHERS	36,67	1,17,34,35,51,68



4 CARD INSERTION DIRECTION



USE THE FOLLOWING P/N FOR OFFICIAL ORDERING

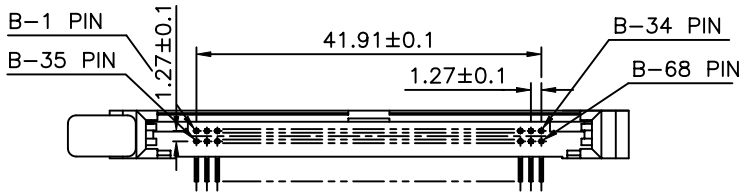
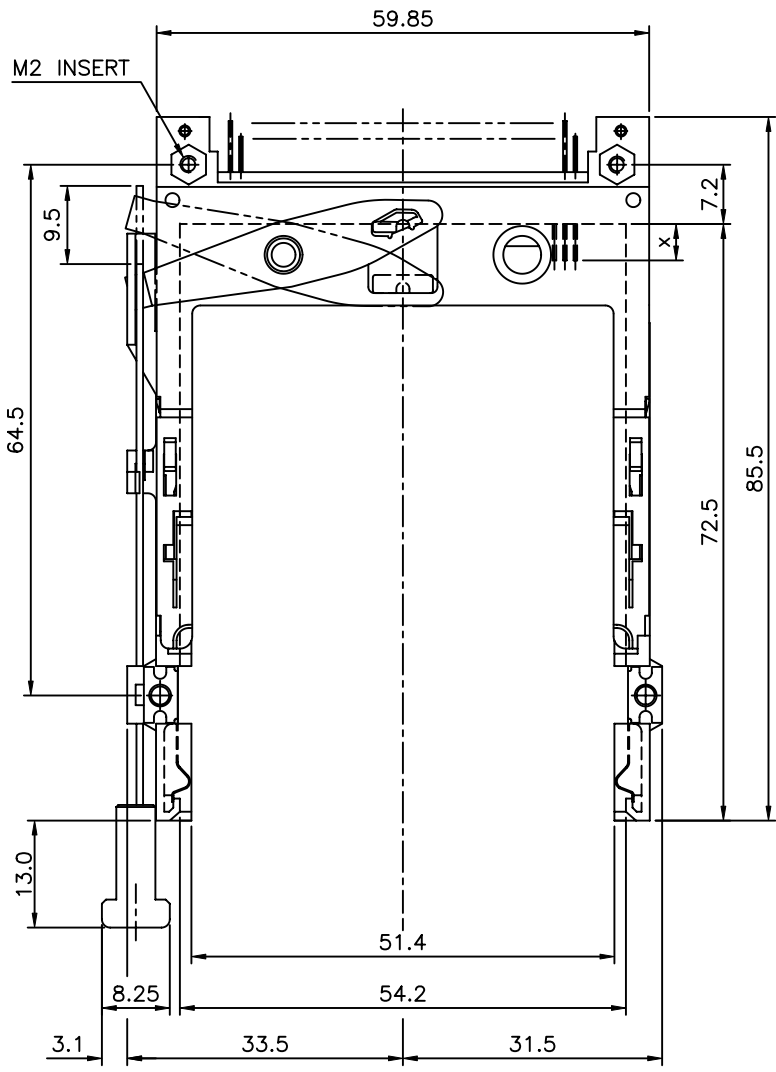
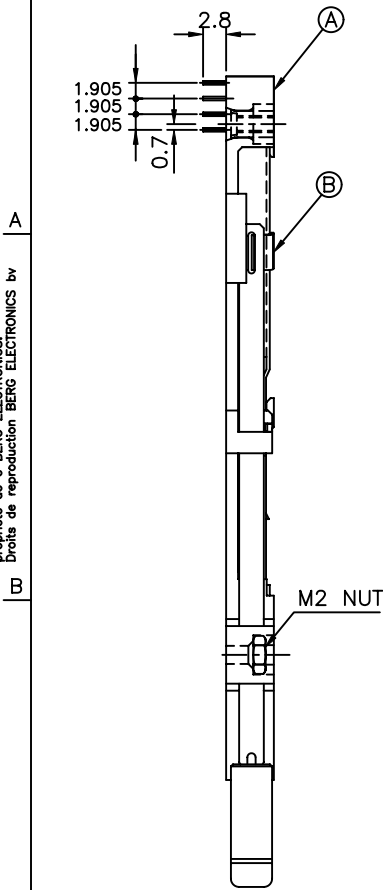
B	EJECT MECH ASS'Y	95627-04CA
A	HDR ASS'Y	92856-010
DESCRIPTION	P/N	

mat'l code		tolerance unless otherwise specified		CUSTOMER COPY			
rev.	ecn no.	dr	date	linear	±0.30	projection	title
G				angles	± 2°		NARROW BODY FRONT EJECT TYPE 1/2/3 EJECTOR ASS'Y
				dr	WENDY CHEN 11/10/98	unit	product family : PCMCIA
				enr	JOSEPH HSIA 11/10/98	mm/inch	code
				chr	JOSEPH HSIA 11/10/98	scale	TWN
				appd	JENN TSAO 11/10/98	size	7 OF
						A3	61573
sheet	revision						
index	sheet						

PRODUCT NO.
61573-100CA

Tous droits strictement réservés. Reproduction ou communication à des tiers sans autorisation écrite du propriétaire.
Property of c BERG ELECTRONICS.
Droits de reproduction BERG ELECTRONICS by

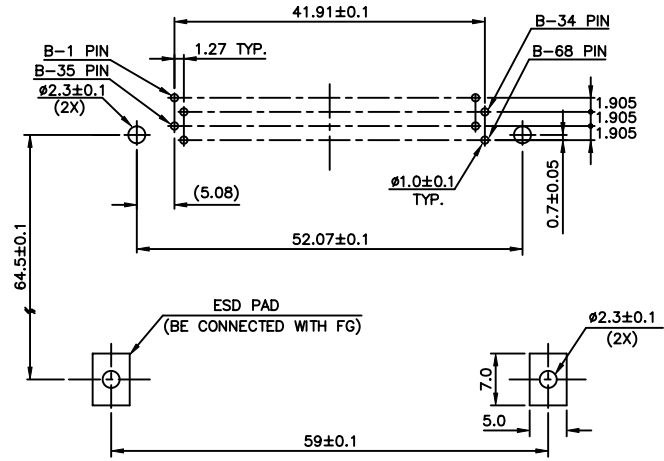
All rights strictly reserved. Reproduction or issue to third parties in any form without written authority from the proprietor.
Property of c BERG ELECTRONICS.
Copyright BERG ELECTRONICS by



NOTES:

1. EJECT FORCE : 3.5 Kg MAX.
2. EJECT TRAVEL: 8.0mm
3. MATERIAL
- 3.1 PART (A) (HEADER ASS'Y)
PLASTIC : HOUSING ...LCP UL94V-0 BLACK
PIN : COPPER ALLOY
- 3.2 PART (B) (EJECT MECHANISM ASS'Y)
PLASTIC : GUIDE: POLYPHTHARAMID UL94V-0 BLACK
: BUTTON: POLYPHTHARAMID UL94V-0 BLACK
PLATE : STAINLESS
EMI CONTACT: PHOSPHOR BRONZE
4. FINISH (PIN)
UNDER PLATING : 0.5 um MIN. Ni
CONTACT AREA : 0.1 um MIN. GOLD OVER 0.5 um MIN. Pd-Ni
SOLDER TAIL : 2.5 um MIN. Sn-Pb
5. DIM "X"

4.25±0.1	3.5±0.1	5.0±0.1
OTHERS	36,67	1,17,34,35,51,68



4 CARD INSERTION DIRECTION

USE THE FOLLOWING P/N FOR OFFICIAL ORDERING

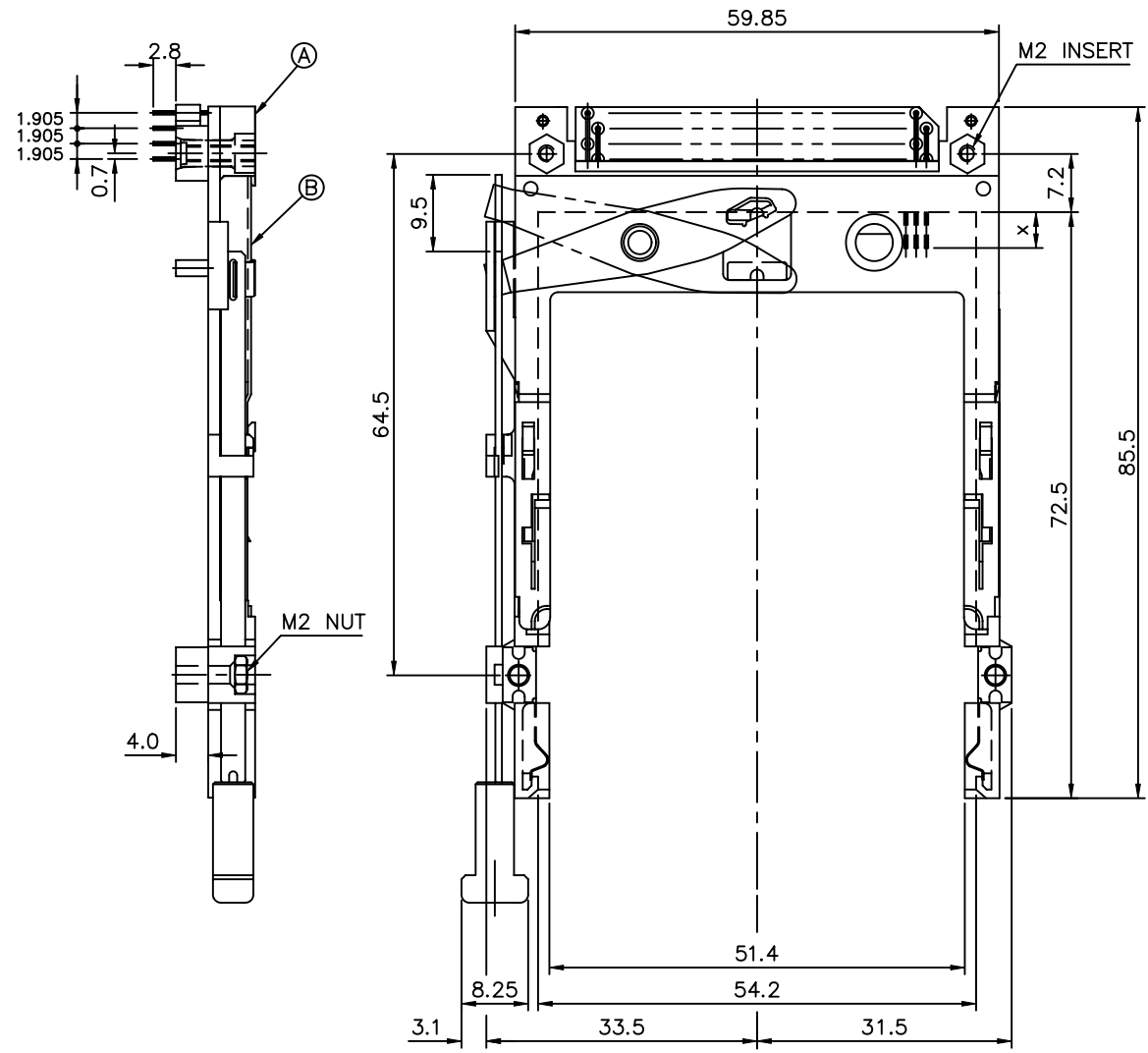
(B)	EJECT MECH ASS'Y	95627-10CA
(A)	HDR ASS'Y	92856-000
DESCRIPTION	P/N	

mat'l code		tolerance unless otherwise specified		CUSTOMER COPY		FCI ELECTRONICS	
rev.	ecn no.	dr	date	linear	±0.30	projection	title
G				angles	± 2°		NARROW BODY FRONT EJECT TYPE 1/2/3 EJECTOR ASS'Y
				dr	WENDY CHEN 08/02/99	unit	product family : PCMCIA
				enr	JOSEPH HSIA 08/02/99	mm/inch	code
				chr	JOSEPH HSIA 08/02/99	scale	TWN
				appd	JENN TSAO 08/02/99	1.5:1	sheet
						A3	8 OF
sheet	revision						
index	sheet						

PRODUCT NO.
61573-140CA

Tous droits strictement réservés. Reproduction ou communication à des tiers sans autorisation écrite du propriétaire. Droits de reproduction BERG ELECTRONICS by

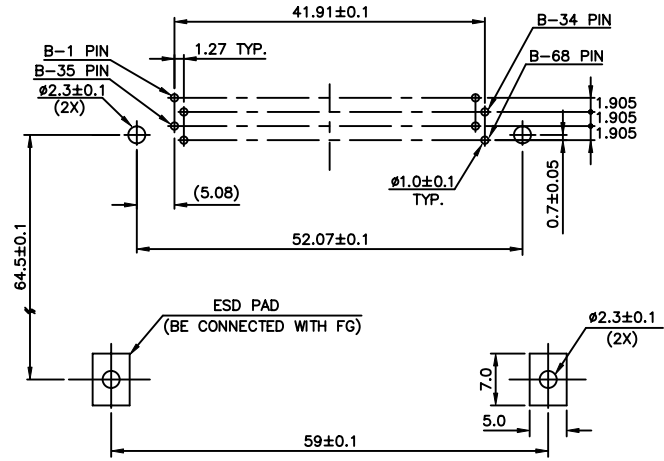
All rights strictly reserved. Reproduction or issue to third parties in any form without written authority from the proprietor. Property of BERG ELECTRONICS. Copyright BERG ELECTRONICS by



NOTES:

1. EJECT FORCE : 3.5 Kg MAX.
2. EJECT TRAVEL: 8.0mm
3. MATERIAL
 - 3.1 PART A (HEADER ASS'Y)
 PLASTIC : HOUSING ...LCP UL94V-0 BLACK
 LOCATOR ...G.F. 6/6 NYLON UL94-VO BLACK
 PIN : COPPER ALLOY
 - 3.2 PART B (EJECT MECHANISM ASS'Y)
 PLASTIC : GUIDE: POLYPHTHARAMID UL94V-0 BLACK
 BUTTON: POLYPHTHARAMID UL94V-0 BLACK
 PLATE : STAINLESS
 EMI CONTACT: PHOSPHOR BRONZE
4. FINISH (PIN)
 UNDER PLATING : 0.5 μm MIN. Ni
 CONTACT AREA : 0.1 μm MIN. GOLD OVER 0.5 μm MIN. Pd-Ni
 SOLDER TAIL : 2.5 μm MIN. Sn-Pb
5. DIM "X"

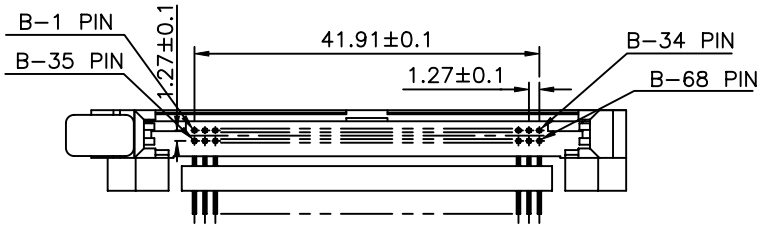
4.25±0.1	3.5±0.1	5.0±0.1
OTHERS	36,67	1,17,34,35,51,68



4 CARD INSERTION DIRECTION

USE THE FOLLOWING P/N FOR OFFICIAL ORDERING

B	EJECT MECH ASS'Y	95627-14CA
A	HDR ASS'Y	92856-010
DESCRIPTION	P/N	



mat'l code		tolerance unless otherwise specified		CUSTOMER COPY			
rev.	ecn no.	dr	date	linear	±0.30	projection	title
H				angles	± 2°		NARROW BODY FRONT EJECT TYPE 1/2/3 EJECTOR ASS'Y
				dr	WENDY CHEN 05/04/00	unit	product family : PCMCIA
				enr	JOSEPH HSIA 05/04/00	mm/inch	code
				chr	JOSEPH HSIA 05/04/00	scale	TWN
				appd	JOSEPH HSIA 05/04/00	1.5:1	sheet
						A3	9 of
sheet		revision					
index		sheet					