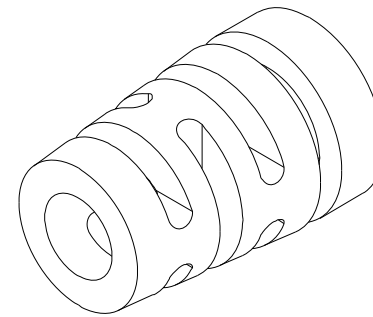
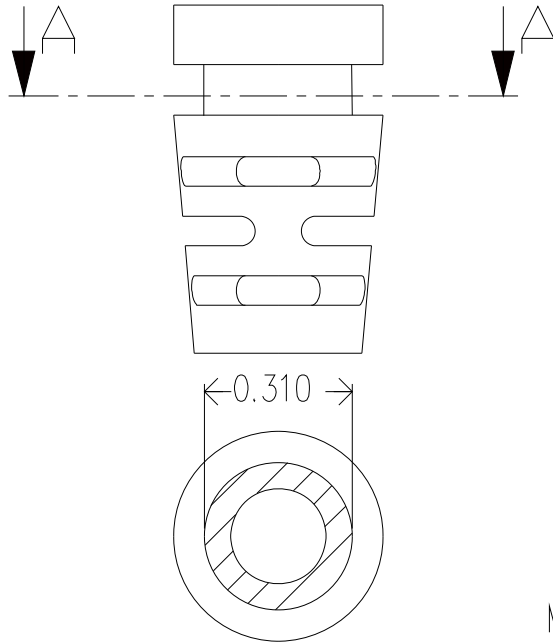
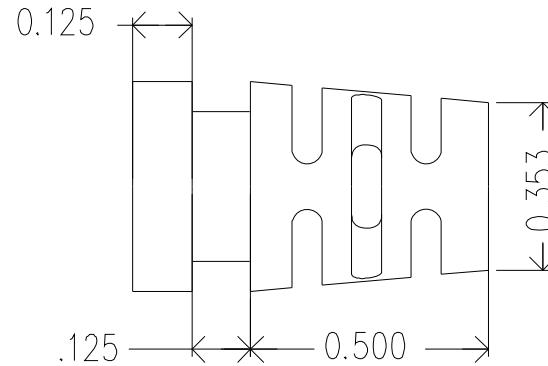
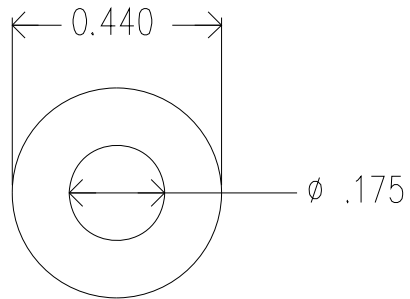


REVISIONS				
ZONE	REV.	DESCRIPTION	DATE	APPROVED



MOLD MATERIAL: ISC P/N: 5000214, PVC, M1472, RoHS, BIK

A-A

Dimensions are subject to change.  
 PROPRIETARY AND CONFIDENTIAL  
 THE INFORMATION CONTAINED IN THIS DRAWING IS THE SOLE PROPERTY OF ISC ENGINEERING. ANY REPRODUCTION IN PART OR AS A WHOLE WITHOUT THE WRITTEN PERMISSION OF ISC ENGINEERING IS PROHIBITED.

		DIMENSIONS ARE IN INCHES		NAME		DATE		ISC Engineering	
		TOLERANCES:		DRAWN		04/22/04		4351 Schaefer Ave, Chino, CA 91710	
		FRACTIONAL ±		CHECKED				Ph: 909-596-3315 Fax: 909-596-3335	
		ANGULAR: MACH ±		ENG APPR.				www.iscengineering.com	
		BEND ±		MFG APPR.				www.overmoldtooling.com	
		TWO PLACE DECIMAL ±		Q.A.				Standard Strain Relief	
		THREE PLACE DECIMAL ±		COMMENTS:				1461080-175-E-310-440-0	
		MATERIAL --		NEXT ASSY		USED ON		SIZE A DWG. NO. 1467101	
		FINISH --		APPLICATION		DO NOT SCALE DRAWING		SCALE: 5:1 WEIGHT: SHEET 1 OF 1	

