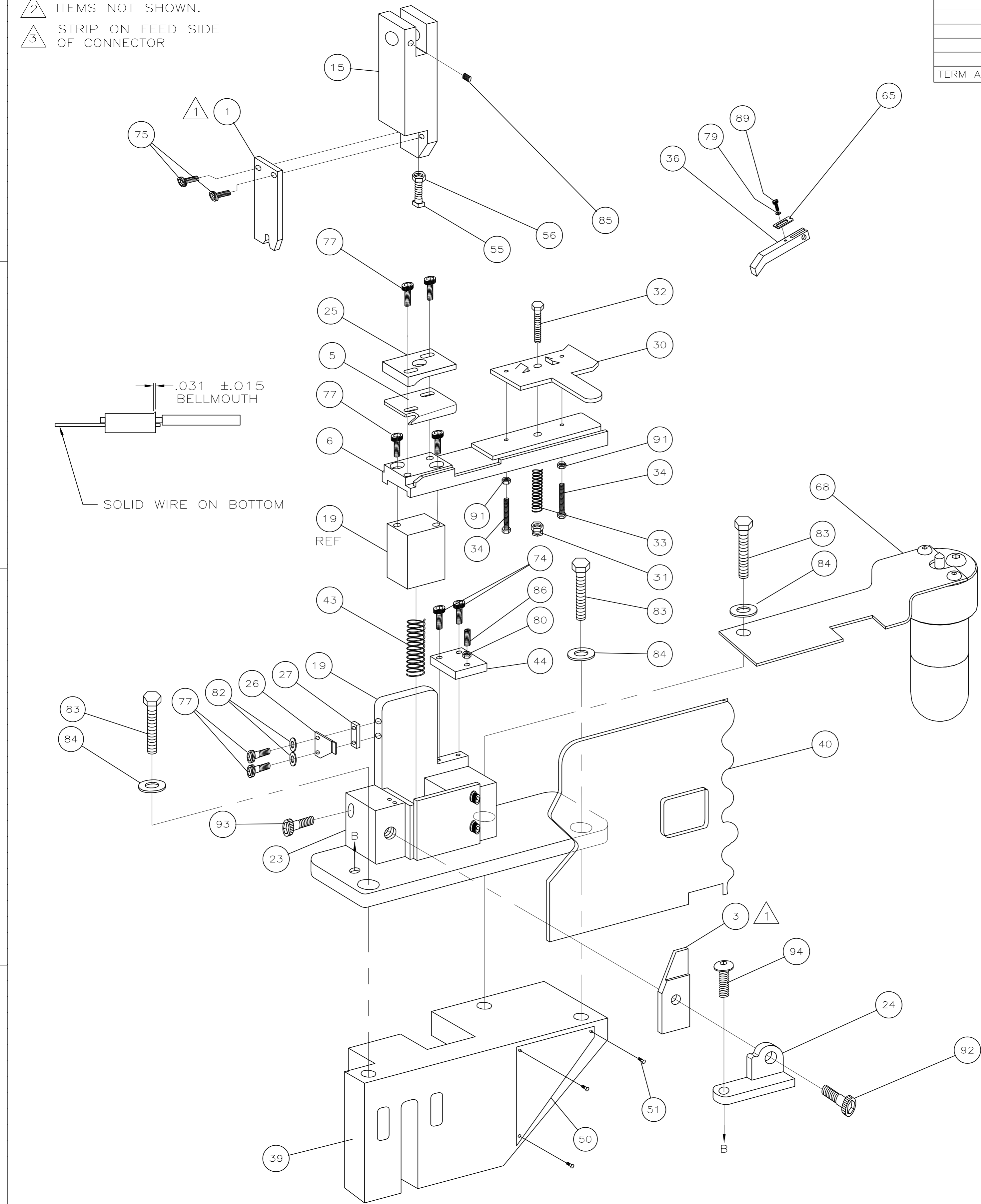


Table with columns: PART NUMBER, REV, FIRST USED. Row 1: 565747-1, T, 1-471273-3.

- 1 RECOMMENDED SPARE PARTS.
2 ITEMS NOT SHOWN.
3 STRIP ON FEED SIDE OF CONNECTOR



Terminal Name: Lengthwise Amplivar Thru Splice. Table with columns for CRIMP HEIGHT and WIRE SIZE. Rows show 'NOT USED' for crimp heights and 'USED' for wire sizes.

CRIMPING DATA. Table with columns: CRIMP, SIZE, TYPE, RANGE. Includes specifications for WIRE (.180), INSUL, FEED (.270), APPL INST, SET UP GAGE, and WIRE STRIP LENGTH.

Revisions table with columns: Loc, Dist, F, LTR, Description, Date, Dwn, App'd. Row 1: A, 4, T, ECR-07-016434, 7-2007, MY, GB.

Parts list table with columns: QTY, U/M, PART NO, DESCRIPTION, ITEM NO. Lists various screws, springs, plates, and guides with their respective quantities and part numbers.

Parts list table with columns: Loc, Dist, F, LTR, Description, Date, Dwn, App'd. Lists various components like nuts, plates, springs, and guides with their locations and quantities.

Controlled document information including dimensions, tolerances, material, finish, weight, size, and scale (1:4). Includes Tyco Electronics logo and product name 'STD APPLICATOR'.