

List of "SFW\_\_R-1/2STAE5LF" customer document

DOCUMENT NO.	LIST
10100523(SHEET1)	DOCUMENT LIST
10100523(SHEET2)	CAT.NO.TABLE FOR 1mm SPACING SMT CONNECTOR (SFW__R-1/2STA__LF)
10100523(SHEET3)	1mm SPACING SMT CONNECTOR (SFW__R-1STA_LF)
10100523(SHEET4)	1mm SPACING SMT CONNECTOR (SFW__R-2STA_LF)
10100523(SHEET5)	CAT.NO.TABLE FOR PLASTIC TAPE PACKAGED 1mm SPACING SMT CONNECTOR (SFW__R-1/2STAE5LF)
10100523(SHEET6)	PLASTIC TAPE PACKAGED 1mm SPACING SMT CONNECTOR (SFW__R-1STAE5LF)
10100523(SHEET7)	PLASTIC TAPE PACKAGED 1mm SPACING SMT CONNECTOR (SFW__R-2STAE5LF)
10100523(SHEET8)	RECOMMENDED CABLE (FPC) (SFW__R-1/2STA_)
SC-SFW14	PRODUCT SPECIFICATION
GS-20-129	HANDLING PROCEDURES

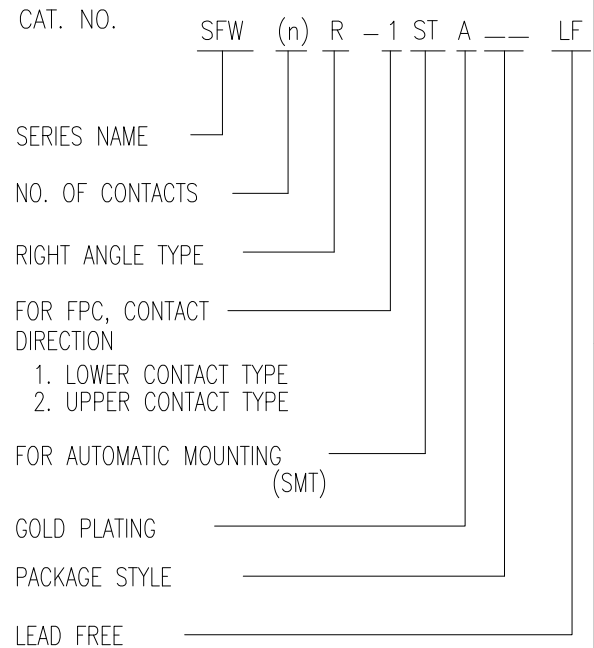
Amphenol FCI

© 2016 AFCl

mat'l. code				surface		tolerance		projection		product family					
-				ISO 1302		ISO 406 ISO 1101				58RF					
ltr	ecn no	dr	date	tolerances unless otherwise specified						title					
A	S09-0120	DGOH	2009-4-17	angles	linear							1mm SPACING FPC/FFC CONNECTOR DOCUMENT LIST			
B	J09-0380	M.Y	2009-10-27									(Cat. No. : SFW__R-1/2STAE5LF)			
C	ELX-J-32971	S.W	2019-3-20									scale N/A			
				dr	S.WATANABE	2019-3-20				dwg no		sheet 1 of 8	size		
				enr	S.WATANABE	2019-3-20				10100523		A4			
				chr	S-H.THIO	2019-3-20									
				appd	Y.KAMEDA	2019-3-20				type Product Customer Drawing					
sheet index	revision sheet	C	C	C	C	C	C	C	C						
		1	2	3	4	5	6	7	8						

CAT. NO. & DIMENSIONS

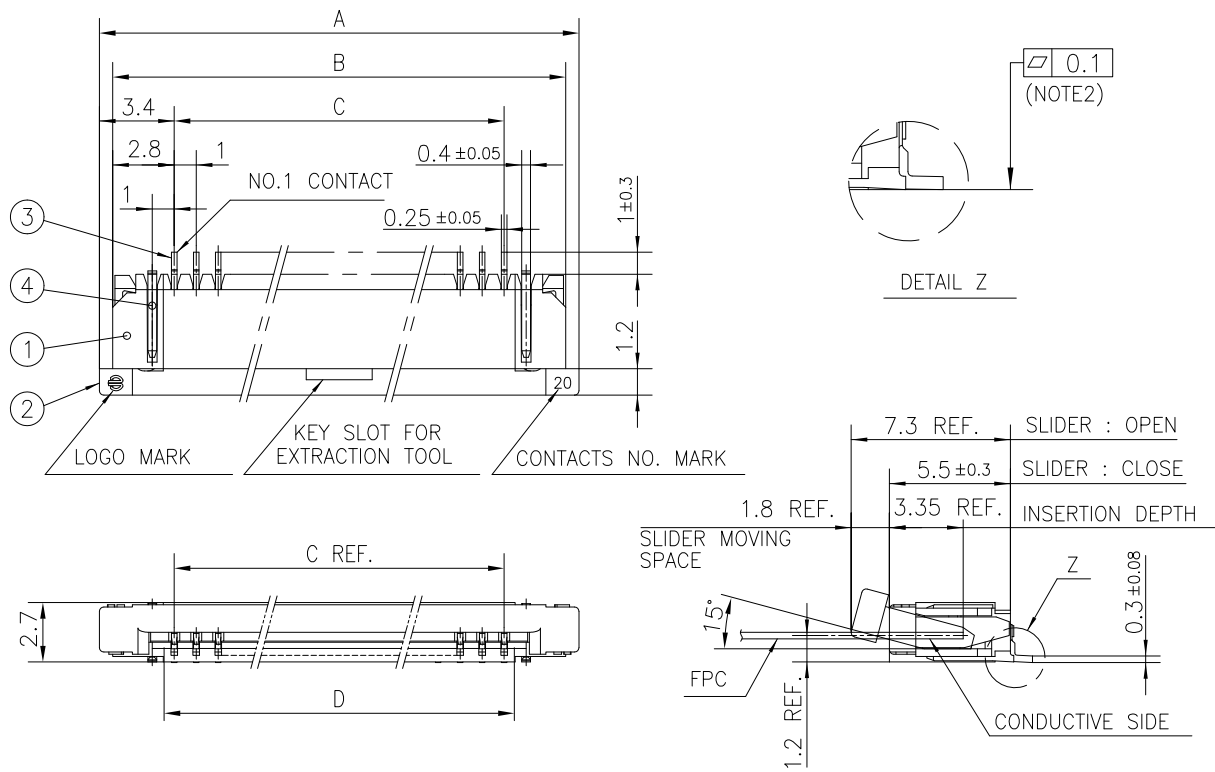
NO. OF CONTACTS (n)	CAT. NO.	DIMENSIONS (NOTE2)			
		A ± 0.2	B ± 0.2	C ± 0.2	D ± 0.1
4	SFW4R-1/2STA__LF	9.8	8.6	3.0	5.3
5	SFW5R-1/2STA__LF	10.8	9.6	4.0	6.3
6	SFW6R-1/2STA__LF	11.8	10.6	5.0	7.3
7	SFW7R-1/2STA__LF	12.8	11.6	6.0	8.3
8	SFW8R-1/2STA__LF	13.8	12.6	7.0	9.3
9	SFW9R-1/2STA__LF	14.8	13.6	8.0	10.3
10	SFW10R-1/2STA__LF	15.8	14.6	9.0	11.3
11	SFW11R-1/2STA__LF	16.8	15.6	10.0	12.3
12	SFW12R-1/2STA__LF	17.8	16.6	11.0	13.3
13	SFW13R-1/2STA__LF	18.8	17.6	12.0	14.3
14	SFW14R-1/2STA__LF	19.8	18.6	13.0	15.3
15	SFW15R-1/2STA__LF	20.8	19.6	14.0	16.3
16	SFW16R-1/2STA__LF	21.8	20.6	15.0	17.3
17	SFW17R-1/2STA__LF	22.8	21.6	16.0	18.3
18	SFW18R-1/2STA__LF	23.8	22.6	17.0	19.3
19	SFW19R-1/2STA__LF	24.8	23.6	18.0	20.3
20	SFW20R-1/2STA__LF	25.8	24.6	19.0	21.3
21	SFW21R-1/2STA__LF	26.8	25.6	20.0	22.3
22	SFW22R-1/2STA__LF	27.8	26.6	21.0	23.3
23	SFW23R-1/2STA__LF	28.8	27.6	22.0	24.3
24	SFW24R-1/2STA__LF	29.8	28.6	23.0	25.3
25	SFW25R-1/2STA__LF	30.8	29.6	24.0	26.3
26	SFW26R-1/2STA__LF	31.8	30.6	25.0	27.3
27	SFW27R-1/2STA__LF	32.8	31.6	26.0	28.3
28	SFW28R-1/2STA__LF	33.8	32.6	27.0	29.3
29	SFW29R-1/2STA__LF	34.8	33.6	28.0	30.3
30	SFW30R-1/2STA__LF	35.8	34.6	29.0	31.3



NOTES

1. THIS PRODUCT IS THE CONNECTOR USED FOR FPC AND COPEES WITH AUTOMATIC MOUNTING (SMT).
2. SEE PART DRAWINGS FOR DIMENSIONS A~D.

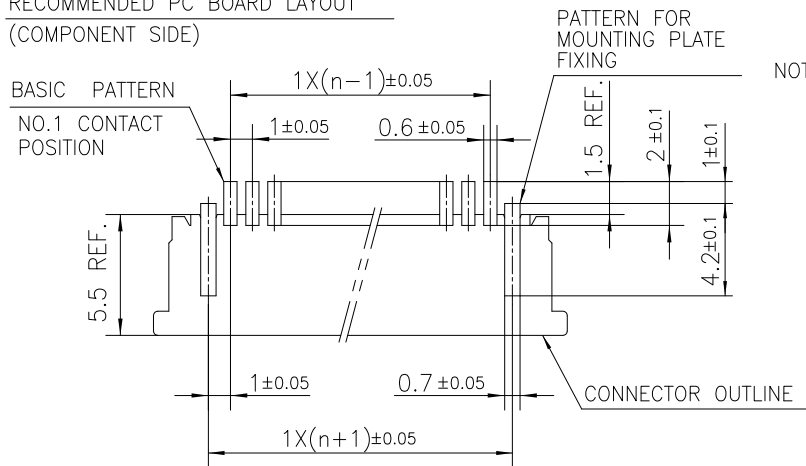
mat'l. code		surface		tolerance		projection		product family	
-		ISO 1302 ✓		ISO 406 ISO 1101				58RF	
ltr	ecn no	dr	date	tolerances unless otherwise specified		MM		title	
c				angles	linear			CAT. NO. TABLE FOR 1mm SPACING SMT CONNECTOR (Cat. No. : SFW__R-1/2STA__LF)	
						scale N/A		dwg no	
				dr	S.WATANABE	2019-3-20		sheet 2 of 8	
				enr	S.WATANABE	2019-3-20		10100523	
				chr	S-H.THIO	2019-3-20		A4	
				appd	Y.KAMEDA	2019-3-20		type Product Customer Drawing	
sheet index	revision sheet								



PT. NO.	PARTS NAME	MATERIAL	Q'TY	NOTE
1	HOUSING	PPS RESIN GLASS REINFORCED (UL94V-0)	1	COLOR : BROWN
2	SLIDER		1	COLOR : BLACK
3	CONTACT	PHOSPHOR BRONZE	n	CONTACT AREA : GOLD TARMINAL AREA : TIN
4	MOUNTING PLATE		2	PLATING : TIN

n : NO. OF CONTACTS

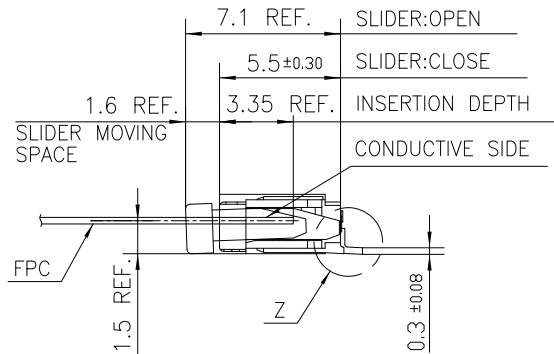
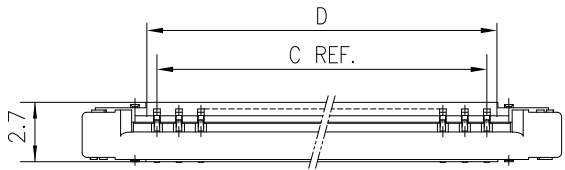
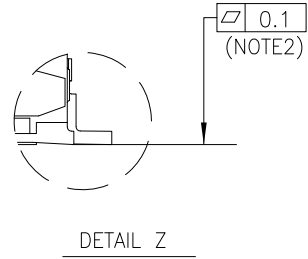
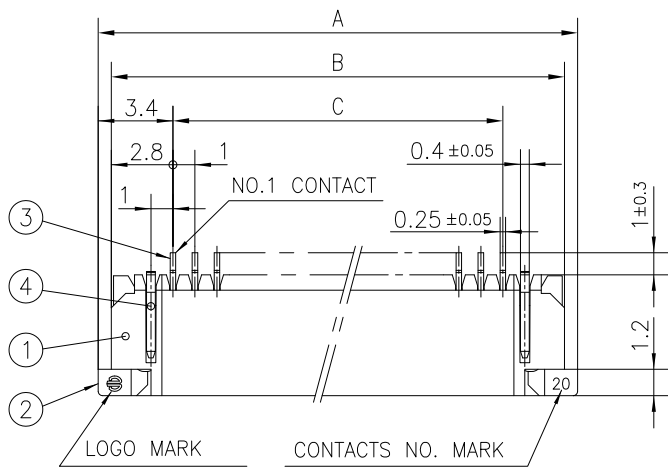
RECOMMENDED PC BOARD LAYOUT  
(COMPONENT SIDE)



NOTES

1. THIS PRODUCT IS THE CONNECTOR USED FOR FPC AND COPES WITH AUTOMATIC MOUNTING (SMT).
2. FLATNESS FOR CONTACT TERMINAL HOUSING MUST BE WITHIN TOLERANCE IN Z PORTION DETAILED DRAWING.
3. THIS PRODUCT IS LOWER CONTACT TYPE CONNECTOR.
4. THIS PRODUCT MEETS EUROPEAN UNION DIRECTIVES AND OTHER COUNTRY REGULATIONS AS DESCRIBED IN GS-22-008.
5. THE HOUSING WILL WITHSTAND EXPOSURE TO 260°C PEAK TEMPERATURE FOR 10 SECONDS IN A REFLOW SOLDERING OVEN.

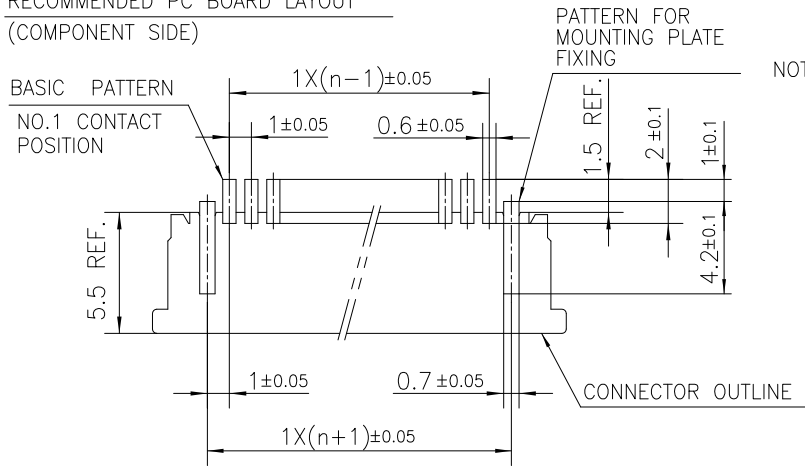
mat'l. code		surface ISO 1302		tolerance ISO 406 ISO 1101		projection		product family					
ltr		ecn no		dr		date		tolerances unless otherwise specified		title		sheet 3 of 8	
c								angles linear ±0.2		1mm SPACING SMT CONNECTOR (Cat. No. SFW__R-1STA__LF)		size	
								scale		dwg no		sheet 3 of 8	
				dr		S.WATANABE		2019-3-20		10100523		A4	
				enr		S.WATANABE		2019-3-20		type		Product Customer Drawing	
				chr		S-H.THIO		2019-3-20					
				appd		Y.KAMEDA		2019-3-20					
sheet index		revision sheet											



PT. NO.	PARTS NAME	MATERIAL	Q'TY	NOTE
1	HOUSING	PPS RESIN GLASS REINFORCED (UL94V-0)	1	COLOR : BROWN
2	SLIDER		1	COLOR : BLACK
3	CONTACT	PHOSPHOR BRONZE	n	CONTACT AREA : GOLD TARMINAL AREA : TIN
4	MOUNTING PLATE		2	PLATING : TIN

n : NO. OF CONTACTS

RECOMMENDED PC BOARD LAYOUT  
(COMPONENT SIDE)



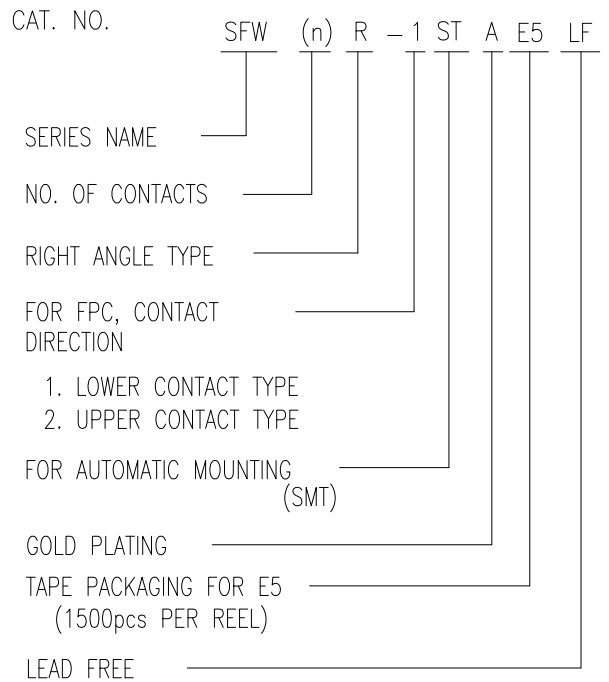
NOTES

1. THIS PRODUCT IS THE CONNECTOR USED FOR FPC AND COPES WITH AUTOMATIC MOUNTING (SMT).
2. FLATNESS FOR CONTACT TERMINAL HOUSING MUST BE WITHIN TOLERANCE IN Z PORTION DETAILED DRAWING.
3. THIS PRODUCT IS UPPER CONTACT TYPE CONNECTOR.
4. THIS PRODUCT MEETS EUROPEAN UNION DIRECTIVES AND OTHER COUNTRY REGULATIONS AS DESCRIBED IN GS-22-008.
5. THE HOUSING WILL WITHSTAND EXPOSURE TO 260°C PEAK TEMPERATURE FOR 10 SECONDS IN A REFLOW SOLDERING OVEN.

mat'l. code		surface 58		tolerance ISO 1302		projection		product family	
-		ISO 1302		ISO 406 ISO 1101		58RF		58RF	
ltr	ecn no	dr	date	tolerances unless otherwise specified		MM		title	
c				angles linear ±0.2		← →		1mm SPACING SMT CONNECTOR (Cat. No. SFW__R-2STA__LF)	
		dr	S.WATANABE	2019-3-20		scale		dwg no	
		enr	S.WATANABE	2019-3-20		Amphenol FCI		sheet 4 of 8	
		chr	S-H.THIO	2019-3-20				10100523	
		appd	Y.KAMEDA	2019-3-20				size A4	
sheet index		revision sheet						type Product Customer Drawing	

CAT. NO. & DIMENSIONS

NO. OF CONTACTS (n)	CAT. NO. (NOTE2)	DIMENSIONS (NOTE3)		
		E MAX.	F ± 0.3	G ± 0.1
4	SFW4R-1/2STAE5LF	22.4	16	—
5	SFW5R-1/2STAE5LF	30.4	24	—
6	SFW6R-1/2STAE5LF	30.4	24	—
7	SFW7R-1/2STAE5LF	30.4	24	—
8	SFW8R-1/2STAE5LF	30.4	24	—
9	SFW9R-1/2STAE5LF	30.4	24	—
10	SFW10R-1/2STAE5LF	30.4	24	—
11	SFW11R-1/2STAE5LF	30.4	24	—
12	SFW12R-1/2STAE5LF	30.4	24	—
13	SFW13R-1/2STAE5LF	38.4	32	28.4
14	SFW14R-1/2STAE5LF	38.4	32	28.4
15	SFW15R-1/2STAE5LF	38.4	32	28.4
16	SFW16R-1/2STAE5LF	38.4	32	28.4
17	SFW17R-1/2STAE5LF	50.4	44	40.4
18	SFW18R-1/2STAE5LF	50.4	44	40.4
19	SFW19R-1/2STAE5LF	50.4	44	40.4
20	SFW20R-1/2STAE5LF	50.4	44	40.4
21	SFW21R-1/2STAE5LF	50.4	44	40.4
22	SFW22R-1/2STAE5LF	50.4	44	40.4
23	SFW23R-1/2STAE5LF	50.4	44	40.4
24	SFW24R-1/2STAE5LF	50.4	44	40.4
25	SFW25R-1/2STAE5LF	50.4	44	40.4
26	SFW26R-1/2STAE5LF	50.4	44	40.4
27	SFW27R-1/2STAE5LF	50.4	44	40.4
28	SFW28R-1/2STAE5LF	62.4	56	52.4
29	SFW29R-1/2STAE5LF	62.4	56	52.4
30	SFW30R-1/2STAE5LF	62.4	56	52.4



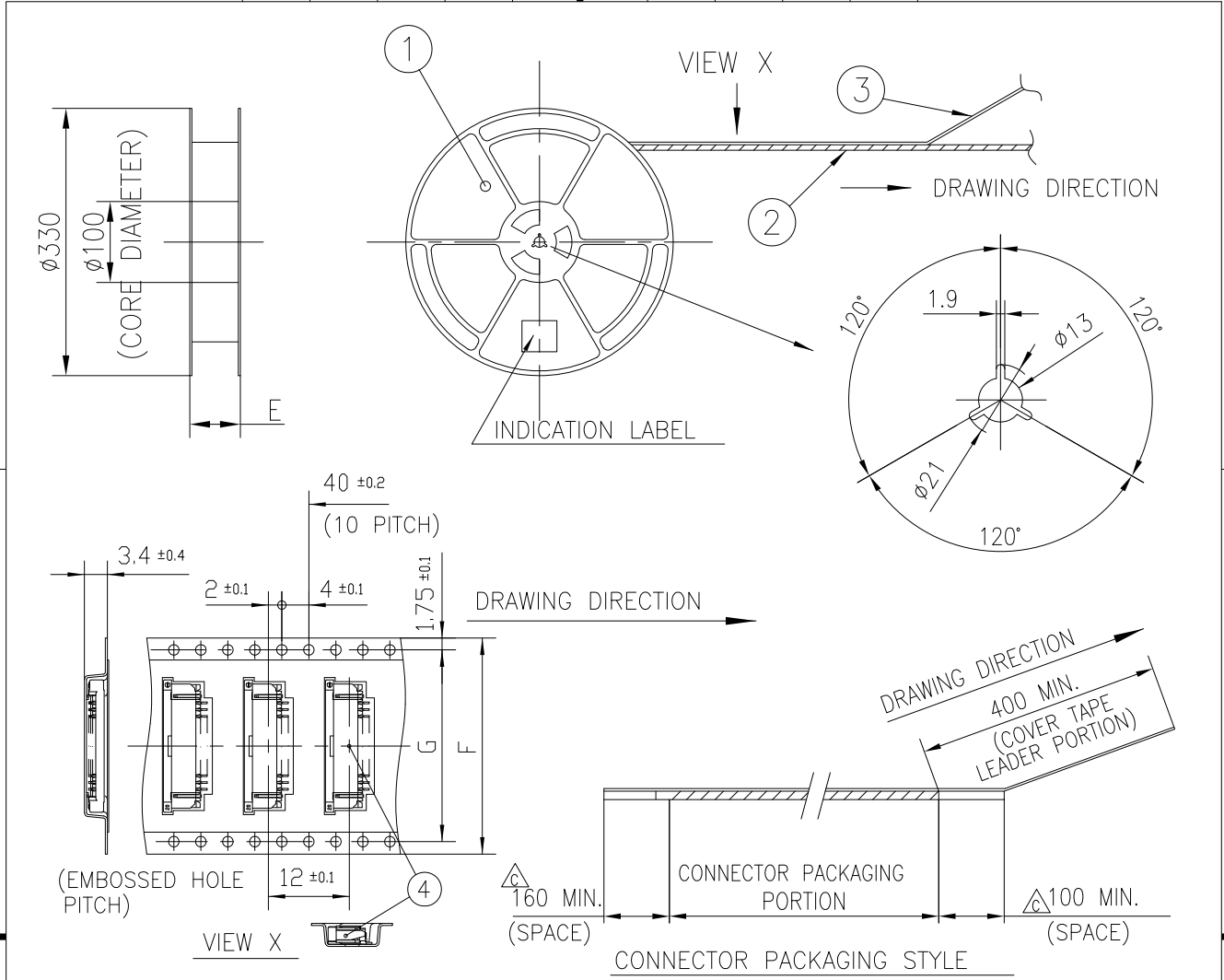
NOTES

1. THIS PRODUCT IS THE CONNECTOR USED FOR FPC AND CYPES WITH AUTOMATIC MOUNTING (SMT).
2. THIS CATALOG NO. INDICATES PLASTIC TAPE PACKAGED CONNECTOR.
3. SEE PART DRAWINGS FOR DIMENSIONS E~G.

Amphenol FCI

© 2016 AFCl

mat'l. code		surface ISO 1302 <input checked="" type="checkbox"/>		tolerance ISO 406 ISO 1101		projection		product family 58RF	
ltr	ecn no	dr	date		tolerances unless otherwise specified		title		sheet 5 of 8 size
c					angles linear		CAT. NO. TABLE FOR PLASTIC TAPE PACKAGED 1mm SPACING SMT CONNECTOR (Cat. No. SFW__R-1/2STAE5LF)		
			dr	S.WATANABE	2019-3-20		scale N/A		dwg no 10100523 sheet 5 of 8 size A4
			enr	S.WATANABE	2019-3-20				
			chr	S-H.THIO	2019-3-20				
			appd	Y.KAMEDA	2019-3-20				
sheet index	revision sheet								

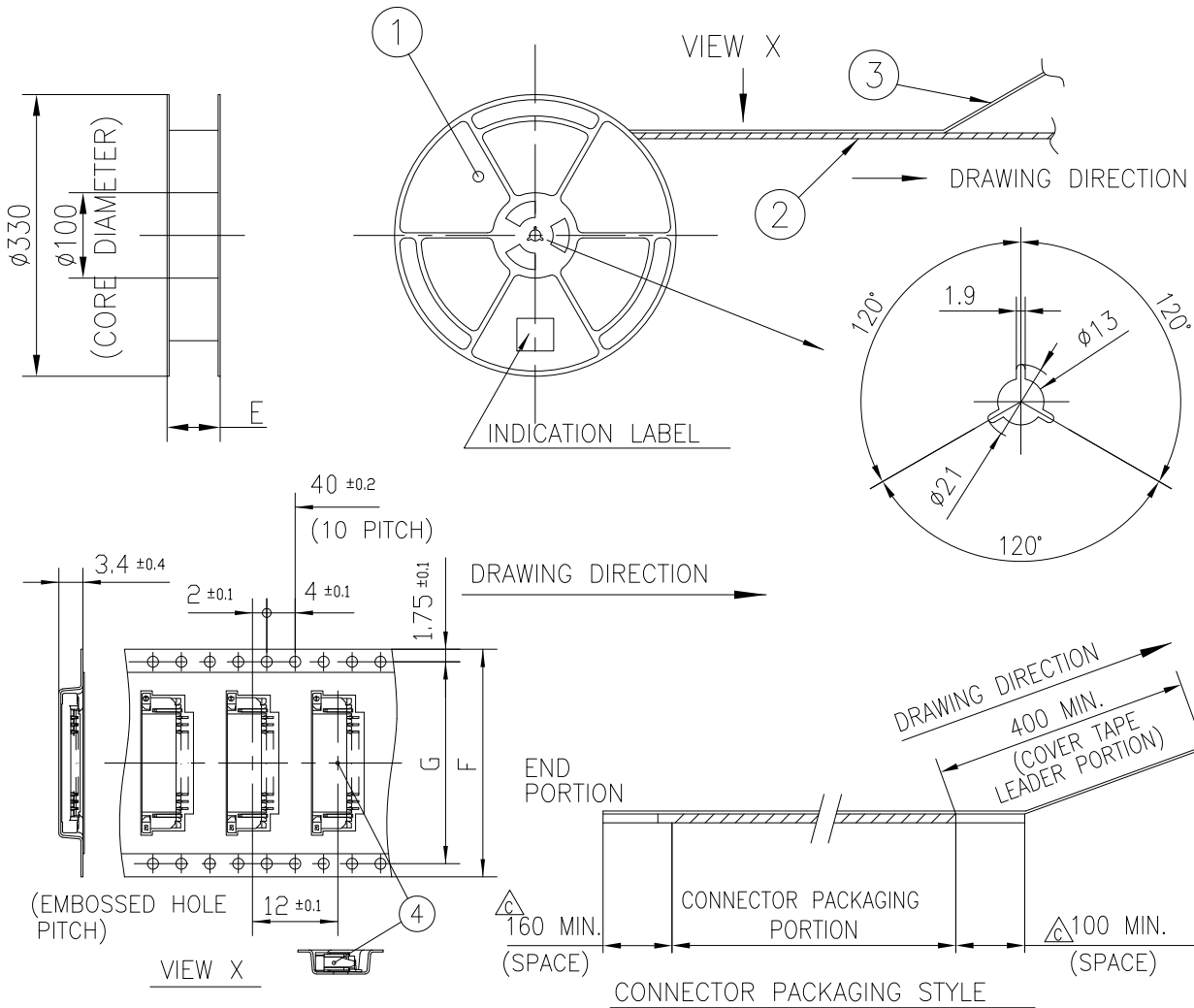


PT. NO.	PARTS NAME	CAT. NO.	MATERIAL	Q'TY	NOTE
1	REEL	_____	POLYSTYRENE	1	COLOR : WHITE or Black
2	PLASTIC (EMBOSS) TAPE	_____	△ PS or A-PET	_____	COLOR : TRANSPARENCY
3	COVER	_____	△ POLYESTER,POLYETHYLENE	_____	COLOR : TRANSPARENCY
4	CONNECTOR	SFW__R-1STA__LF	SEE SHEET 3	1500	LOWER CONTACT TYPE

NOTES

- THIS IS PLASTIC TAPE PACKAGED CONNECTOR USED FOR FPC AND COPES WITH AUTOMATIC MOUNTING (SMT).
- SEE JIS C 0806 (PACKING OF ELECTRONIC COMPONENTS ON CONTINUOUS TAPES (SURFACE MOUNTING DEVICES)) FOR SHAPE AND DIMENSIONS OF PLASTIC (EMBOSS) TAPE AND REEL.
- E DIMENSION IS PORTION OF THE CORE.

mat'l. code		surface ISO 1302		tolerance ISO 406 ISO 1101		projection		product family 58RF	
ltr	ecn no	dr	date	tolerances unless otherwise specified		MM		title	
c				angles	linear	scale N/A		PLASTIC TAPE PACKAGED 1mm SPACING SMT CONNECTOR (Cat. No. SFW__R-1STAE5LF)	
				dr	S.WATANABE	2019-3-20	Amphenol FCI	dwg no sheet 6 of 8 size	
				enr	S.WATANABE	2019-3-20		10100523 A4	
				chr	S-H.THIO	2019-3-20			
				appd	Y.KAMEDA	2019-3-20		type Product Customer Drawing	
sheet index	revision sheet								



PT. NO.	PARTS NAME	CAT. NO.	MATERIAL	Q'TY	NOTE
1	REEL	_____	POLYSTYRENE	1	COLOR : WHITE or Black
2	PLASTIC (EMBOSS) TAPE	_____	△ PS or A-PET	_____	COLOR : TRANSPARENCY
3	COVER	_____	△ POLYESTER,POLYETHYLENE	_____	COLOR : TRANSPARENCY
4	CONNECTOR	SFW__R-2STA__LF	SEE SHEET4	1500	UPPER CONTACT TYPE

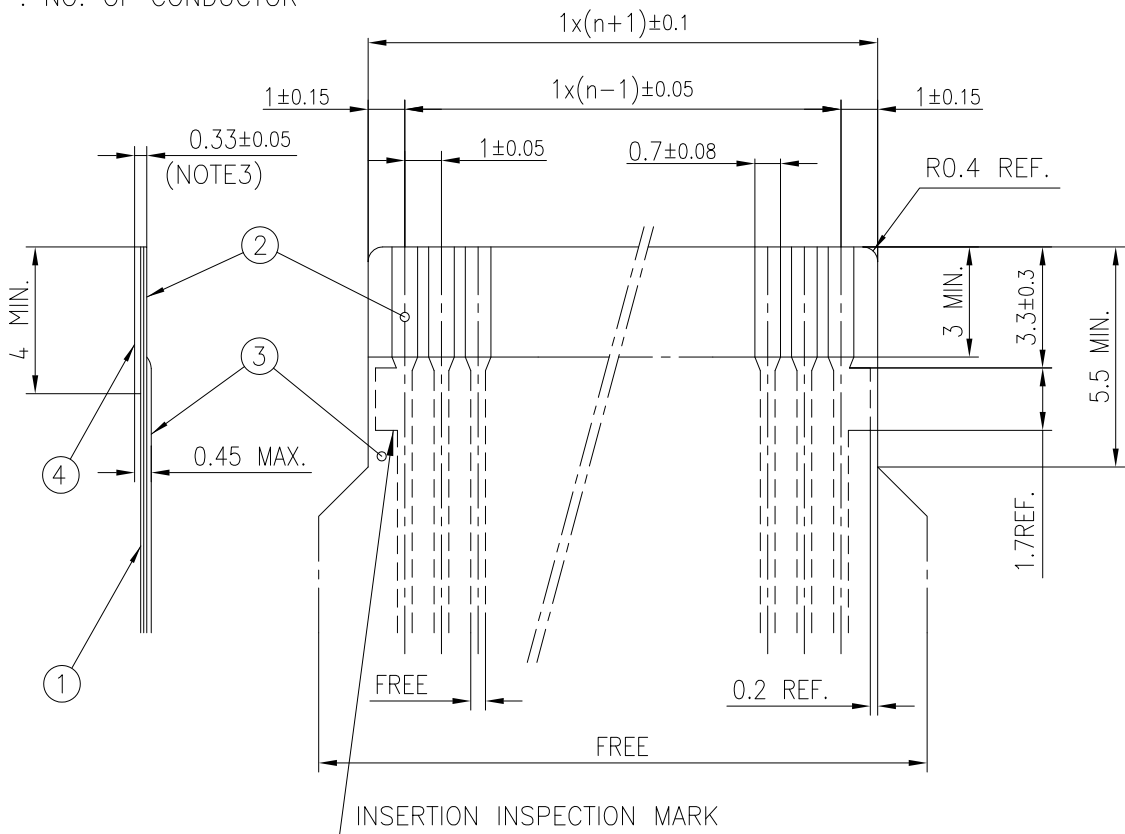
NOTES

1. THIS IS PLASTIC TAPE PACKAGED CONNECTOR USED FOR FPC AND COPES WITH AUTOMATIC MOUNTING (SMT).
2. SEE JIS C 0806 (PACKING OF ELECTRONIC COMPONENTS ON CONTINUOUS TAPES (SURFACE MOUNTING DEVICES)) FOR SHAPE AND DIMENSIONS OF PLASTIC (EMBOSS) TAPE AND REEL.
3. E DIMENSION IS PORTION OF THE CORE.

mat'l. code		surface ISO 1302 ✓		tolerance ISO 406 ISO 1101		projection		product family 58RF	
ltr	ecn no	dr	date	tolerances unless otherwise specified		MM		title	
c				angles	linear	scale N/A		PLASTIC TAPE PACKAGED 1mm SPACING SMT CONNECTOR (Cat. No. SFW__R-2STAE5LF)	
				dr	S.WATANABE	2019-3-20	Amphenol FCi	dwg no sheet 7 of 8 size	
				enr	S.WATANABE	2019-3-20		10100523 A4	
				chr	S-H.THIO	2019-3-20			
				appd	Y.KAMEDA	2019-3-20		type Product Customer Drawing	
sheet index	revision sheet								

RECOMMENDED CABLE (FPC)

n : NO. OF CONDUCTOR



PT. NO.	PARTS NAME	MATERIAL	THICKNESS (um)
1	BASE FILM	POLYIMIDE OR POLYESTER OR EQUAL	25
2	CONDUCTOR	COPPER FOIL (PLATING : Ni UNDER PLATING GOLD0.5um MIN.)	35
3	OVERLAY	POLYIMIDE OR POLYESTER OR EQUAL	—
4	SUPPORTING TAPE	POLYESTER OR POLYIMIDE OR EQUAL	188

- NOTES
1. NO BURR AT EACH PORTION.
  2. NO PEELING IN COMMON USE.
  3. TOTAL THICKNESS LIMIT OF EACH MATERIAL (INCLUDING ADHESIVE AGENT) IS SPECIFIED.

mat'l. code		surface ISO 1302 <input checked="" type="checkbox"/>		tolerance ISO 406 ISO 1101		projection		product family 58RF			
ltr	ecn no	dr	date	tolerances unless otherwise specified				title			
c				angles	linear	MM		RECOMMENDED CABLE (Cat. No. SFW__R-1/2STA_)			
						scale N/A		dwg no		sheet 8 of 8	size
				dr	S.WATANABE	2019-3-20		10100523		A4	
				enr	S.WATANABE	2019-3-20		type Product Customer Drawing			
				chr	S-H.THIO	2019-3-20					
				appd	Y.KAMEDA	2019-3-20					
sheet index	revision sheet										