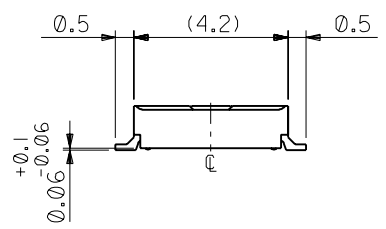
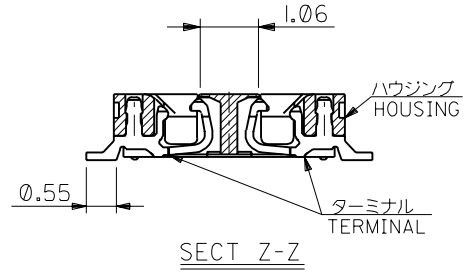
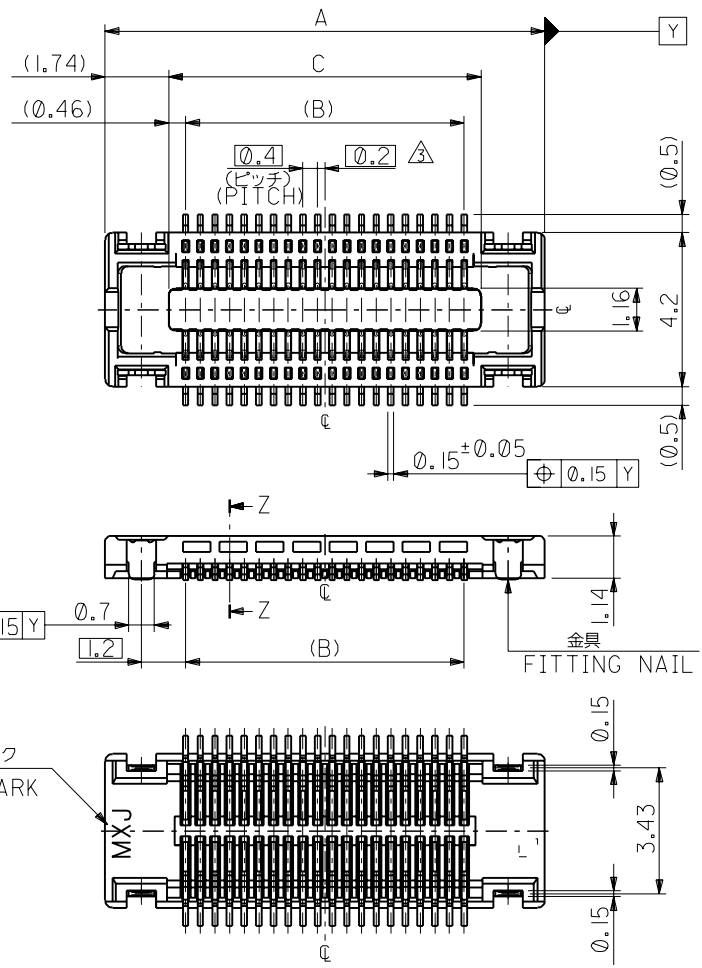


DWG. NO. SD-54518-008



20.52	19.6	24	54518-1001	100
16.52	15.6	20	54518-0801	80
12.52	11.6	16	54518-0601	60
C	B	A	MATERIAL NO.	CKT.

DO NOT SCALE DRAWING

DESIGN NO. DRAWN: CHK: APPR:	DESIGN NO. DRAWN: CHK: APPR:	DESIGN NO. DRAWN: CHK: APPR:	DESIGN NO. DRAWN: CHK: APPR:	DESIGN NO. DRAWN: CHK: APPR:
RELEASED '00/1/28	DESIGN NO. JC2000-0346	DRAWN: T.KAIHO	CHK: T.ITO	APPR: M.FUKUSHIMA

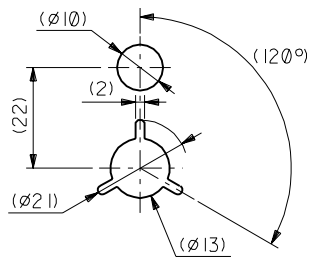
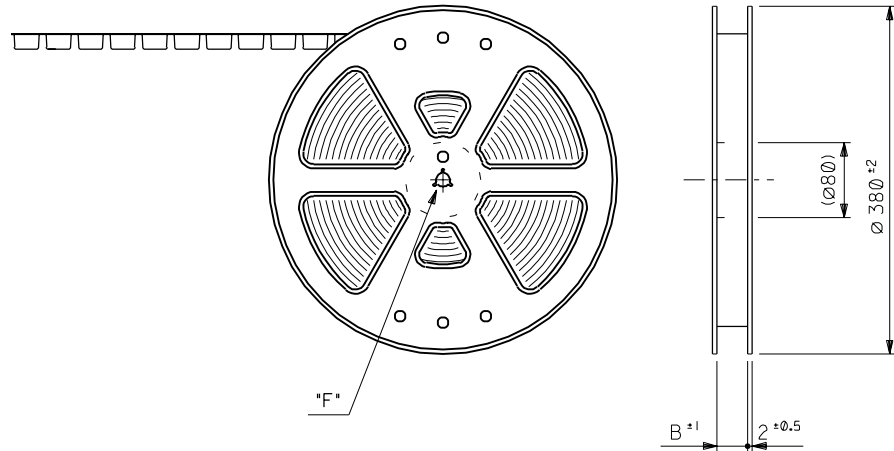
MATERIAL 材料	SHEET 2 OF 2 参照 SEE SHEET 2 OF 2
FINISH 仕上り	//
WIRE RANGE 適用線径範囲	//
INS. RANGE 被覆外径	//

GENERAL TOLERANCES: (UNLESS SPECIFIED) 一般公差		
10 UNDER 未満	+0.2	
10 OVER 以上	30 UNDER 未満	+0.25
30 OVER 以上	+0.3	
ANGLE 角度	+3°	

MODEL NO.	54518-***1	DIMENSIONS:	SHT	REV
SCALE	DESIGN UNITS	PROJECTION	mm ONLY	INCH ONLY
DRAWN BY & DATE	T.KAIHO '00/1/28	CHECKED BY & DATE	T.ITO '00/1/28	TITLE: 0.4 B-To-B Conn Rec Hsg Assy (Hgt=1.5) WITH NAIL
APPROVED BY & DATE	M.FUKUSHIMA '00/1/28	MOLEX INCORPORATED		
CAD FILENAME	54518008.S01	MATERIAL NO.	DRAWING NO.	SHEET NO.
		SEE CHART	SD-54518-008	1 OF 2
DRAWING CONTAINS INFORMATION THAT IS PROPRIETARY TO MOLEX INCORPORATED AND SHOULD NOT BE USED WITHOUT WRITTEN PERMISSION.				SIZE B

DWG. NO. SD-54518-009

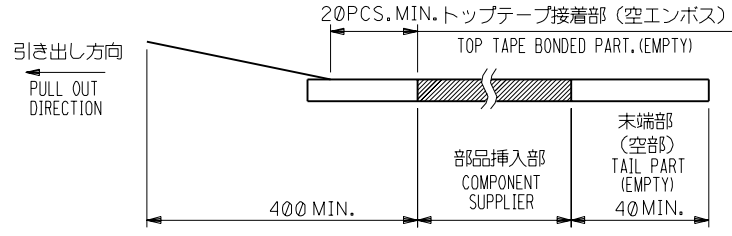
引き出し方向
PULL OUT
DIRECTION



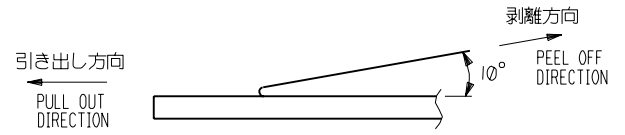
DETAIL "F"

NOTES

- 製品詳細寸法については図面 SD-54518-008 を参照下さい。
RE DETAILED DIMENSION, SEE SD-54518-008
- 梱包数量：3000個/リール
NUMBER OF CONNECTORS : 3000PCS/REEL
- リードテープ長さ LEAD TAPE LENGTH
20PCS. MIN. トップテープ接着部 (空エンボス)



- トップテープの剥離強度：0.1N ~ 0.7N (10.2gf ~ 71.4gf)
(剥離方向は下図参照)
尚、本規格値は出荷時に適用。(但し、輸送時に剥離が発生しないこと。)
PEELING OFF FORCE OF TOP TAPE : 0.1N ~ 0.7N (10.2gf ~ 71.4gf)
(PEELING DIRECTION AS SHOWN IN FOLLOWING FIG.)
THIS REQUIREMENT SHOULD BE APPLIED AT SHIPMENT.
PEEL OFF SHOULD NOT BE ALLOWED, DURING TRANSPORTATION.

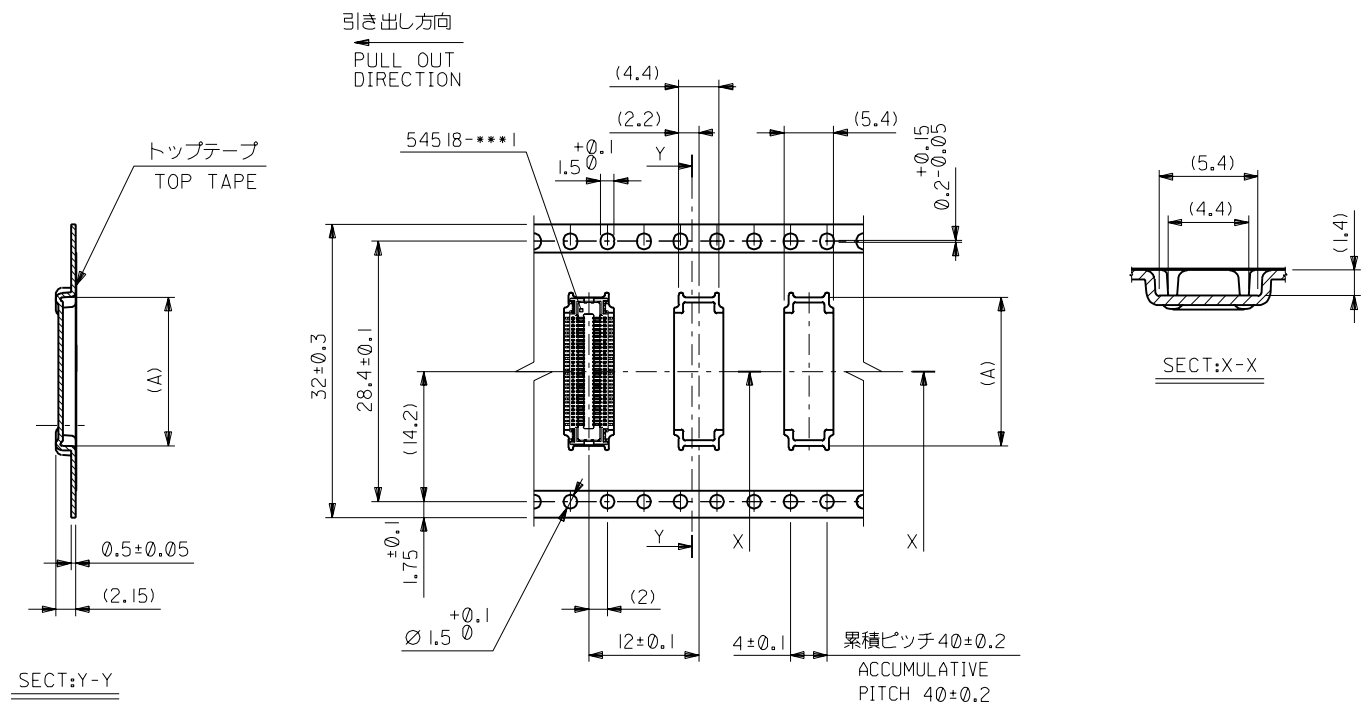


- 材料 (MATERIAL)
キャリアテープ (CARRIER TAPE) : ポリプロピレン (POLYPROPYLENE)
トップテープ (TOP TAPE) : PET, PE, PEF
リール (REEL) : ポリスチレン (PS) <リサイクル材を含む>
POLYSTYRENE (PS) <RECYCLE MATERIAL CONTAINED>

DO NOT SCALE DRAWING

④ ④ NO. DRWN: CHK: APPR:		④ ④ NO. DRWN: CHK: APPR:		④ ④ NO. DRWN: CHK: APPR:		REVISED '01/2/1 ④ ④ NO. JC2001-0623 DRWN: C. OKUYAMA CHK: T. ITO APPR: M. FUKUSHIMA		RELEASED '00/1/28 ④ ④ NO. JC2000-0346 DRWN: T. KAIHO CHK: T. ITO APPR: M. FUKUSHIMA		MATERIAL 材料 注記参照 SEE NOTES		GENERAL TOLERANCES: (UNLESS SPECIFIED) 一般公差		SCALE 1/1		MODEL NO. 54518-***2		DIMENSIONS: <input type="checkbox"/> mm <input type="checkbox"/> INCH <input checked="" type="checkbox"/> mm ONLY		SHT 1 REV	
										FINISH 仕上げ //		10 UNDER 未満 0.2		DRAWN BY & DATE T. KAIHO '00/1/28		TITLE: 0.4 B-T0-B Rec Assy W/NAIL (Hgt=1.5) Embstp pkg					
										10 OVER 30 UNDER 未満 0.25		CHECKED BY & DATE T. ITO '01/2/1		MOLEX MOLEX INCORPORATED							
										30 OVER 以上 0.3		APPROVED BY & DATE M. FUKUSHIMA '01/2/1		CAD FILENAME 54518009.S01		DRAWING NO. SD-54518-009		SHEET NO. 1 OF 3			
										ANGLE 角度 ±3°		THIS DRAWING CONTAINS INFORMATION THAT IS PROPRIETARY TO MOLEX INCORPORATED AND SHOULD NOT BE USED WITHOUT WRITTEN PERMISSION.		MATERIAL NO. SEE CHART		SIZE B					

DWG. NO.
SD-54518-009



32mm幅キャリアテープ
32mm WIDTH CARRIER TAPE

32	33.5	20.2	54518-0802	80
		16.2	54518-0602	60
キャリアテープ幅 CARRIER TAPE WIDTH	B	(A)	MATERIAL NO.	種数 CKT.

DO NOT SCALE DRAWING

④NO. DRWN: CHK: APPR:	③NO. DRWN: CHK: APPR:	②NO. DRWN: CHK: APPR:	REVISED '01/2/1 ①NO. JC2001-0623 DRWN: OKUYAMA CHK: T.IITO APPR: M.FUKUSHIMA	RELEASED '00/1/28 ①NO. JC2000-0346 DRWN: T.KAIHO CHK: T.IITO APPR: M.FUKUSHIMA	MATERIAL 材料 注記参照 SEE NOTES
FINISH 仕上げ //					
WIRE RANGE 通所線幅 //					
INS. RANGE 被覆外径 //					

GENERAL TOLERANCES: (UNLESS SPECIFIED) 一般公差		SCALE 1/1	DESIGN UNITS <input checked="" type="checkbox"/> mm <input type="checkbox"/> INCH
10 UNDER 未満	+0.2	DRAWN BY & DATE T.KAIHO '00/1/28	
10 OVER 以上 30 UNDER 未満	+0.25	CHECKED BY & DATE T.IITO '01/2/1	
30 OVER 以上	+0.3	APPROVED BY & DATE M.FUKUSHIMA '01/2/1	
ANGLE 角度	+3°	CAD FILENAME 54518009.S02	

MODEL NO. 54518-***2		DIMENSIONS: <input checked="" type="checkbox"/> mm <input type="checkbox"/> INCH <input checked="" type="checkbox"/> mm ONLY		SHT 2	REV
TITLE: 0.4 B-T0-B Rec Assy W/NAIL (Hgt=1.5) Embstp pkg		MATERIAL NO. SEE CHART			
DRAWING NO. SD-54518-009		SHEET NO. 2 OF 3		SIZE B	
THIS DRAWING CONTAINS INFORMATION THAT IS PROPRIETARY TO MOLEX INCORPORATED AND SHOULD NOT BE USED WITHOUT WRITTEN PERMISSION.					

④ NO. DRWN: CHK: APPR:	③ NO. DRWN: CHK: APPR:	② NO. DRWN: CHK: APPR:	REVISED '01/2/1 ① NO. JC2001-0623 DRWNC. OKUYAMA CHK: T. ITO APPR. M. FUKUSHIMA	RELEASED '00/1/28 ① NO. JC2000-0346 DRWN: T. KAIHO CHK: T. ITO APPR. M. FUKUSHIMA	MATERIAL 材料 注記参照 SEE NOTES
FINISH 仕上げ //					
WIRE RANGE 適用線径範囲 //					
INS. RANGE 被覆外径 //					

REVISED '01/2/1 ① NO. JC2001-0623 DRWNC. OKUYAMA CHK: T. ITO APPR. M. FUKUSHIMA	RELEASED '00/1/28 ① NO. JC2000-0346 DRWN: T. KAIHO CHK: T. ITO APPR. M. FUKUSHIMA	MATERIAL 材料 注記参照 SEE NOTES
FINISH 仕上げ //		
WIRE RANGE 適用線径範囲 //		
INS. RANGE 被覆外径 //		

REVISED '01/2/1 ① NO. JC2001-0623 DRWNC. OKUYAMA CHK: T. ITO APPR. M. FUKUSHIMA	RELEASED '00/1/28 ① NO. JC2000-0346 DRWN: T. KAIHO CHK: T. ITO APPR. M. FUKUSHIMA	MATERIAL 材料 注記参照 SEE NOTES
FINISH 仕上げ //		
WIRE RANGE 適用線径範囲 //		
INS. RANGE 被覆外径 //		

GENERAL TOLERANCES: (UNLESS SPECIFIED) 一般公差	SCALE 縮尺 10 UNDER 未満 10 OVER 以上 30 UNDER 未満 30 OVER 以上 ANGLE 角度	DESIGN UNITS 設計単位 <input checked="" type="checkbox"/> mm <input type="checkbox"/> INCH DRAWN BY & DATE T. KAIHO '00/1/28 CHECKED BY & DATE T. ITO '01/2/1 APPROVED BY & DATE M. FUKUSHIMA '01/2/1 CAD FILENAME 54518009.S03
DIMENSIONS: 寸法 <input type="checkbox"/> mm <input type="checkbox"/> INCH <input checked="" type="checkbox"/> mm ONLY	TITLE: 0.4 B-T0-B Rec Assy W/NAIL (Hgt=1.5) Embstp pkg	MOLEX INCORPORATED MATERIAL NO. SEE CHART DRAWING NO. SD-54518-009 SHEET NO. 3 OF 3 SIZE B

44	45.5	24.2	54518-1002	100
キャリアテープ幅 CARRIER TAPE WIDTH	B	(A)	MATERIAL NO.	種数 CKT.
MODEL NO.	54518-***2	DIMENSIONS:		SHT REV

