



# Omni Antenna 698-2,700 MHz N Type Female Connector

## Antennas Technical Data Sheet

PE51OM1038

### Features

- All weather operation
- Includes heavy duty steel mast mounting brackets
- PVC radome
- Integral N-Female connector
- Rugged industrial grade design
- 360° Omnidirectional Pattern

### Applications

- 700, 800, 900, 1800, 1900, 2100, 2400, 2600 Cellular Band Operation
- Supports midband LTE and 5G networks
- Point to Multipoint and Non Line of Sight (NLOS) Applications
- 6/8 dBi gain

### Description

The PE51OM1038 from Pasternack is a high performance LTE outdoor omnidirectional antenna designed for Cellular Networks. The PE51OM1038 operates from 698 to 960 MHz and 1710 to 2700 MHz which is ideal for 5G, LTE, CDMA, LPWAN/IoT/M2M applications including LoRA, LTE-M, and NB-IOT. The Multi-Band design of the Pasternack PE51OM1038 antenna eliminates the need to purchase different antennas for each frequency. The same antenna can be used for a wide array of base station cellular applications where wide coverage is desired. Pasternack's PE51OM1038 can be used to distribute Cellular telecommunication signals over a large area.

The omnidirectional antenna with vertical polarization PE51OM1038 from Pasternack has Type N connectors and 6 to 8 dBi of gain. The Type N connectorized PE51OM1038 antenna from Pasternack excels in large open areas. The mounting bracket and hardware are included for easy installation. Our Pasternack ISO 9001:2008 registered facilities in Irvine, CA ships all Type N RF, microwave and millimeter wave waveguide components from stock the same day you purchase them. Pasternack offers the broadest and deepest in-stock inventory and is where to buy 5G antennas. Our expert technical support and friendly, knowledgeable customer service personnel are available to assist you with your particular needs for LTE outdoor omnidirectional 5G cellular antennas.

### Configuration

Design	Omni
Band Type	Multi
Radiation Pattern	Omnidirectional
Polarization	Vertical
Connector Type	N Female
Number of Ports	1
Lightning Protection	DC Ground

### Electrical Specifications

Description	Minimum	Typical	Maximum	Units
Frequency Range	698		2,700	MHz
Input VSWR		1.7:1		
Impedance		50		Ohms
Input Power			100	Watts

Click the following link (or enter part number in "SEARCH" on website) to obtain additional part information including price, inventory and certifications: [Omni Antenna 698-2,700 MHz N Type Female Connector PE51OM1038](#)



# Omni Antenna 698-2,700 MHz N Type Female Connector

## Antennas Technical Data Sheet

PE51OM1038

### Specifications by Band

Description	Band 1	Band 2	Band 3	Band 4	Band 5	Units
Range	0.698 to 0.96	1.71 to 2.7				GHz
Gain	6	8				dBi
Horizontal Beam Width	360	360				Degrees
Vertical Beam Width	25	18				Degrees

### Mechanical Specifications

Radome Material	PVC
<b>Size</b>	
Overall Length	27.5591 in [700 mm]
Width	2.3622 in [60 mm]
Height	2.3622 in [60 mm]
Mounting Mast Diameter	1.18 to 2.36 in [29.97 to 59.94 mm]
Weight	6.61 lbs [3 kg]

### Environmental Specifications

<b>Temperature</b>	
Operating Range	-40 to +60 deg C
Wind Loading	134.216 MPH [216 KPH]

**Compliance Certifications** (see [product page](#) for current document)

### Plotted and Other Data

Notes:

Omni Antenna 698-2,700 MHz N Type Female Connector from Pasternack Enterprises has same day shipment for domestic and International orders. Our RF, microwave and millimeter wave products maintain a 99.4% availability and are part of the broadest selection in the industry.

Click the following link (or enter part number in "SEARCH" on website) to obtain additional part information including price, inventory and certifications: [Omni Antenna 698-2,700 MHz N Type Female Connector PE51OM1038](#)

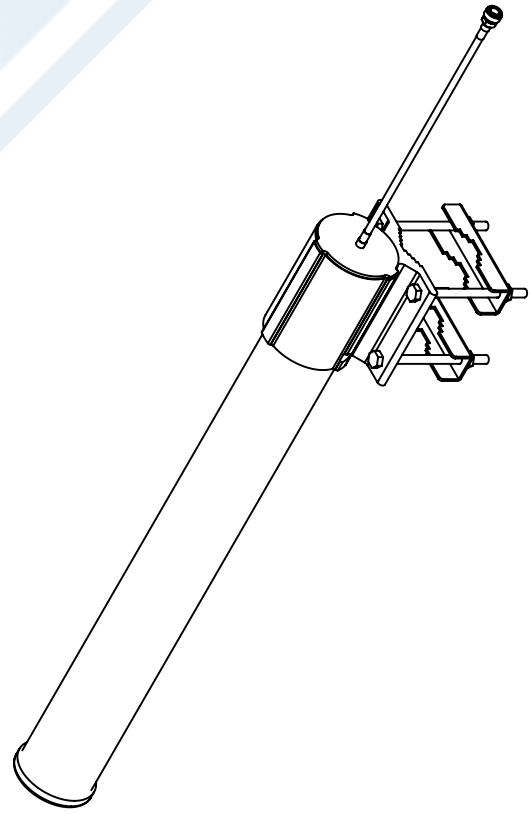
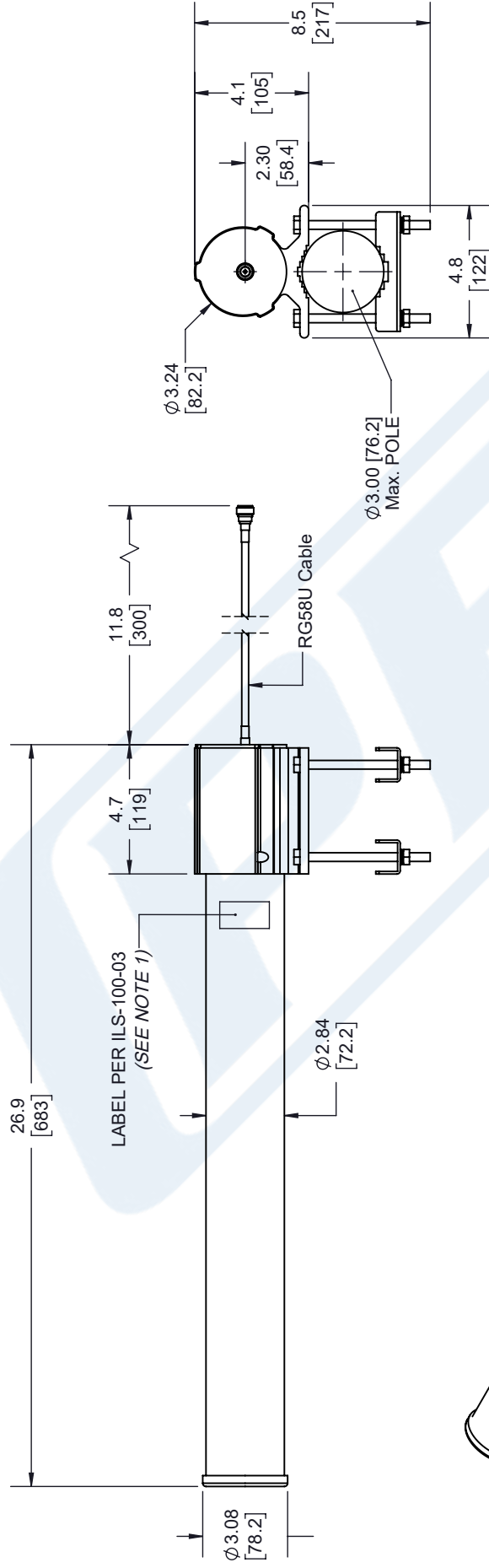
URL: <https://www.pasternack.com/single-antenna-698-mhz-2.7-ghz-0-gain-n-pe51om1038-p.aspx>

The information contained in this document is accurate to the best of our knowledge and representative of the part described herein. It may be necessary to make modifications to the part and/or the documentation of the part, in order to implement improvements. Pasternack reserves the right to make such changes as required. Unless otherwise stated, all specifications are nominal. Pasternack does not make any representation or warranty regarding the suitability of the part described herein for any particular purpose, and Pasternack does not assume any liability arising out of the use of any part or documentation.

# PE51OM1038 CAD Drawing

## Omni Antenna 698-2,700 MHz N Type Female Connector

REVISIONS			
REV.	DESCRIPTION	DATE	APPROVED
A	INITIAL RELEASE	2/11/2022	K. HIETPAS



- NOTES:**
- LABEL PER ILS-100-03. FOR INTERNAL USE ONLY. LABEL LOCATION FOR REFERENCE ONLY.

UNLESS OTHERWISE SPECIFIED LEADING DIMENSIONS ARE INCHES DIMENSIONS IN [ ] ARE MILLIMETERS

**TOLERANCES:**

.X = ±.2 [5.08]	FRACTIONS ±.1/32
.XX = ±.02 [51]	ANGLES ± 1°
.XXX = ±.005 [13]	

**CABLE LENGTH (L), TOLERANCES:**

L ≤ 12 [305]	±.1 [25] / -0
12 [305] < L ≤ 60 [1524]	±.2 [51] / -0
60 [1524] < L ≤ 120 [3048]	±.4 [102] / -0
120 [3048] < L ≤ 300 [7620]	±.6 [152] / -0
300 [7620] < L	±.5% / -0

ALL DIMENSIONS SHOWN ARE FOR REFERENCE ONLY.

**PE PASTERNAK**  
an INFINITE brand

Pasternack Enterprises, Inc.  
P. O. Box 16759, Irvine, CA 92623.  
Phone: 1.949.261.1920 | 1.866.727.8376  
Fax: 1.949.261.7451  
Website: www.pasternack.com  
E-mail: sales@pasternack.com

THIRD-ANGLE PROJECTION

THE INFORMATION AND DESIGN IN THIS DOCUMENT IS THE PROPERTY OF PASTERNAK CORPORATION ALL RIGHTS RESERVED.

SHEET 1 OF 1

SCALE N/A

REV	A	CAGE CODE	DRAWN BY	ITEM NO.	REV	PE51OM1038	A
SIZE	A	53919	K.DANG	PE51OM1038			

THESE COMMODITIES, TECHNOLOGY OR SOFTWARE WERE EXPORTED FROM THE UNITED STATES IN ACCORDANCE WITH THE EXPORT ADMINISTRATION REGULATIONS. DIVERSION CONTRARY TO U.S. LAW PROHIBITED.