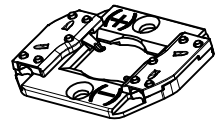
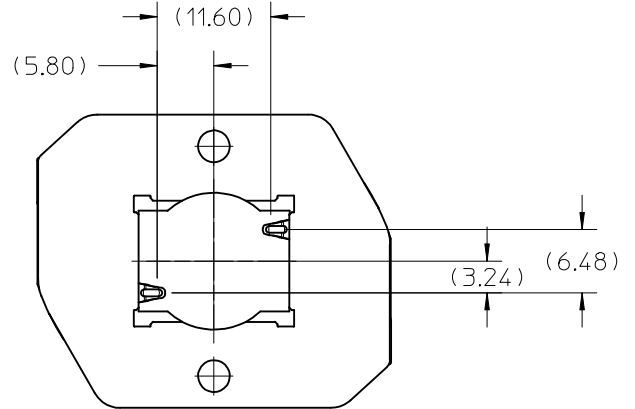
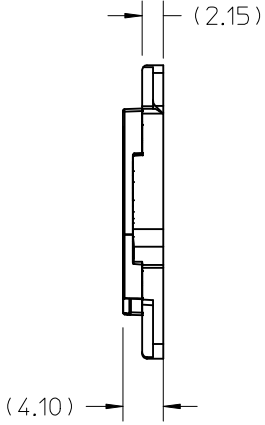
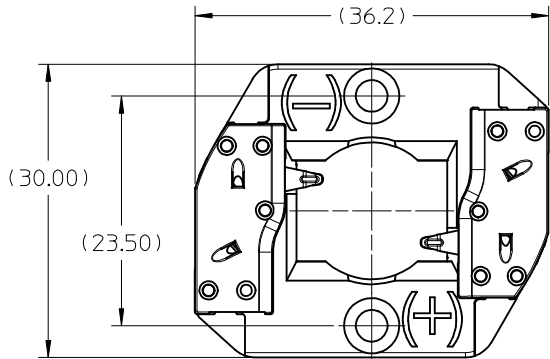


10	9	8	7	6	5	4	3	2	1
PART NUMBER	DESCRIPTION			MATERIAL	COLOR	AGENCY APPROVAL			
180390-0002	COB LED HOLDER ASSEMBLY 15.0MM X 12.0MM - NYLON			POLYAMIDE, GLASS FILLED	NATURAL	UL 496 FILE# E345583			
180390-0102	COB LED HOLDER ASSEMBLY 15.0MM X 12.0MM - PBT			POLYESTER, GLASS FILLED	WHITE	UL 496 FILE# E345583			



ISO TOP VIEW  
SCALE 1:1

- NOTES:
- MATERIALS: HOUSING AND CAP: SEE CHART  
TERMINAL: COPPER ALLOY
  - FINISHES: COB LED CONTACT BEAM: GOLD OVER NICKEL, WIRE TRAP: TIN OVER NICKEL
  - PRODUCT SPECIFICATION: PS-180390-002
  - PACKGING SPECIFICATION PK-180396-101
  - APPLICATION SPECIFICATION: AS-180328-001
  - APPLICABLE WIRE GAUGE - 18, 20, AND 22 AWG
    - TINNED SOLID WIRE IS PREFERRED
    - FOR STRANDED WIRE, PRE-TINNED IS RECOMMENDED
    - 10 mm +2/-0 mm STRIP LENGTH IS RECOMMENDED
  - MOUNT HOLDER USING M3 OR 4-40 SCREWS (2), SEE SHEET 3 FOR TORQUE SPECIFICATION.
  - THIS PRODUCT IS ELV AND ROHS COMPLIANT
  - ALL DIMENSIONS IN PARENTHESIS (XX.XX) ARE FOR REFERENCE ONLY

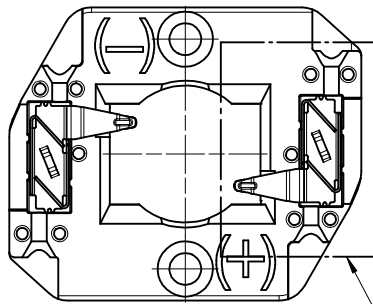
<b>ENTER DESCRIPTION</b> EC NO: SSL2017-0012 (DRAWN: ZAB, JANOVSKI 2016/08/16) CHKD: APPR: GMEYER 2016/09/21 REV	QUALITY SYMBOLS	GENERAL TOLERANCES (UNLESS SPECIFIED)		DIMENSION STYLE <b>MM ONLY</b>		SCALE <b>2:1</b>	DESIGN UNITS <b>METRIC</b>	THIRD ANGLE PROJECTION	
	$\nabla F=0$	mm	INCH	DRAWN BY MDEVITO	DATE 2012/02/03	<b>COB LED HOLDER 15.0MM X 12.0MM RECTANGLE</b>			
	$\nabla F=0$	4 PLACES ± --- ± ---	3 PLACES ± --- ± ---	CHECKED BY	DATE				
	$\nabla F=0$	2 PLACES ± 0.13 ± ---	1 PLACE ± 0.25 ± ---	APPROVED BY DMCGOWAN	DATE 2012/02/07	<b>MOLEX INCORPORATED</b>		MATERIAL NO.	DOCUMENT NO. <b>SD-180390-002</b>
D3	DRAFT WHERE APPLICABLE MUST REMAIN WITHIN DIMENSIONS		SEE CHART		THIS DRAWING CONTAINS INFORMATION THAT IS PROPRIETARY TO MOLEX INCORPORATED AND SHOULD NOT BE USED WITHOUT WRITTEN PERMISSION				

10 9 8 7 6 5 4 3 2 1

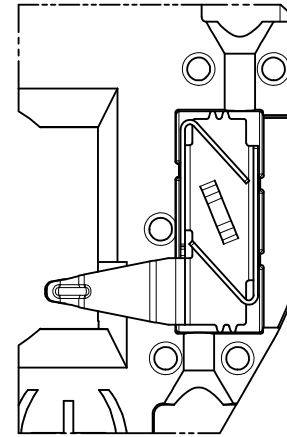
DETAIL VIEW OF TWO-WAY WIRE TRAP

WIRE TRAPS CAN ACCOMMODATE  
18, 20, AND 22 GAUGE WIRE

NOTE: WIRE TRAP CAPS ARE REMOVED FOR CLARITY



SEE DETAIL A

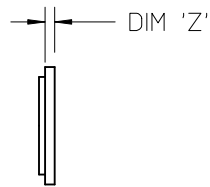
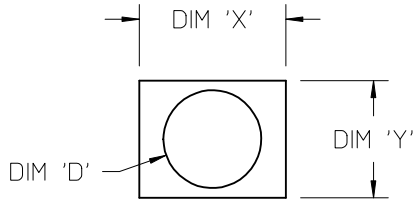


DETAIL A  
SCALE 4:1

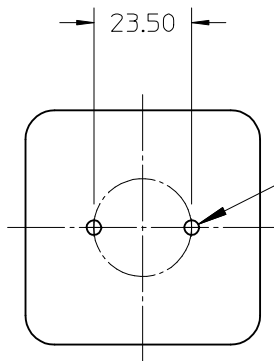
<b>ENTER DESCRIPTION</b> EC NO: SSL2017-0012 DRWNL:ZABJANOVSKI 2016/08/16 CHKD: APPR:GMEYER 2016/09/21 REV	QUALITY SYMBOLS	GENERAL TOLERANCES (UNLESS SPECIFIED)	DIMENSION STYLE <b>MM ONLY</b>		SCALE <b>2:1</b>	DESIGN UNITS <b>METRIC</b>	THIRD ANGLE PROJECTION	
	▽=0	mm INCH	DRAWN BY MDEVITO	DATE 2012/02/03	TITLE <b>COB LED HOLDER 15.0MM X 12.0MM RECTANGLE</b>			
	▽=0	4 PLACES ± --- ± ---	CHECKED BY	DATE				
	▽=0	3 PLACES ± --- ± ---	APPROVED BY DMCGOWAN	DATE 2012/02/07	MOLEX INCORPORATED DOCUMENT NO.		SHEET NO. 2 OF 3	
▽=0	2 PLACES ± 0.13 ± ---	DRAFT WHERE APPLICABLE MUST REMAIN WITHIN DIMENSIONS		SEE CHART		SD-180390-002		
▽=0	1 PLACE ± 0.25 ± ---	ANGULAR ± 1/2°		THIS DRAWING CONTAINS INFORMATION THAT IS PROPRIETARY TO MOLEX INCORPORATED AND SHOULD NOT BE USED WITHOUT WRITTEN PERMISSION				

9 8 7 6 5 4 3 2 1

COB MFG	TYPE	DIM 'X'	DIM 'Y'	DIM 'Z'	DIM 'D'
SHARP	MINI ZENIGATA	15.0	12.0	1.0	10.0
NICHIA	N***S024*	15.0	12.0	1.0	8.7
LUMILEDS	LUXEON L2C2 1202E0600	15.0	12.0	1.0	8.8



COB LED  
SCALE 2:1



M3 OR 4-40 TAPPED HOLES (2)  
TORQUE: CERAMIC 0.20 N-M MIN TO 0.40 N-M MAX  
ALUMINUM 0.40 N-M MIN TO 0.80 N-M MAX

RECOMMENDED MOUNTING DIMENSIONS (NTS)

<b>ENTER DESCRIPTION</b> EC NO: SSL2017-0012 DRWNL:ZABJANOVSKI 2016/08/16 CHKD: APPR:GMEYER 2016/09/21 <b>D3</b>	<b>QUALITY SYMBOLS</b> $\nabla F/0$ $\nabla F/0$ $\nabla F/0$	<b>GENERAL TOLERANCES (UNLESS SPECIFIED)</b> <table border="1"> <thead> <tr> <th></th> <th>mm</th> <th>INCH</th> </tr> </thead> <tbody> <tr> <td>4 PLACES</td> <td><math>\pm</math>---</td> <td><math>\pm</math>---</td> </tr> <tr> <td>3 PLACES</td> <td><math>\pm</math>---</td> <td><math>\pm</math>---</td> </tr> <tr> <td>2 PLACES</td> <td><math>\pm 0.13</math></td> <td><math>\pm</math>---</td> </tr> <tr> <td>1 PLACE</td> <td><math>\pm 0.25</math></td> <td><math>\pm</math>---</td> </tr> <tr> <td>0 PLACE</td> <td><math>\pm</math>---</td> <td><math>\pm</math>---</td> </tr> </tbody> </table>		mm	INCH	4 PLACES	$\pm$ ---	$\pm$ ---	3 PLACES	$\pm$ ---	$\pm$ ---	2 PLACES	$\pm 0.13$	$\pm$ ---	1 PLACE	$\pm 0.25$	$\pm$ ---	0 PLACE	$\pm$ ---	$\pm$ ---	<b>DIMENSION STYLE</b> <b>MM ONLY</b>	<b>SCALE</b> <b>2:1</b>	<b>DESIGN UNITS</b> <b>METRIC</b>	<b>THIRD ANGLE PROJECTION</b>
		mm	INCH																					
	4 PLACES	$\pm$ ---	$\pm$ ---																					
	3 PLACES	$\pm$ ---	$\pm$ ---																					
2 PLACES	$\pm 0.13$	$\pm$ ---																						
1 PLACE	$\pm 0.25$	$\pm$ ---																						
0 PLACE	$\pm$ ---	$\pm$ ---																						
		<b>ANGULAR</b> $\pm 1/2^\circ$	<b>DRAWN BY</b> MDEVITO <b>DATE</b> 2012/02/03 <b>CHECKED BY</b> <b>DATE</b>	<b>TITLE</b> <b>COB LED HOLDER</b> <b>15.0MM X 12.0MM</b> <b>RECTANGLE</b>																				
	<b>DRAFT WHERE APPLICABLE MUST REMAIN WITHIN DIMENSIONS</b>		<b>APPROVED BY</b> DMCGOWAN <b>DATE</b> 2012/02/07 <b>MATERIAL NO.</b>	<b>DOCUMENT NO.</b> <b>SD-180390-002</b>																				
			<b>SEE CHART</b>	<b>SHEET NO.</b> <b>3 OF 3</b>																				