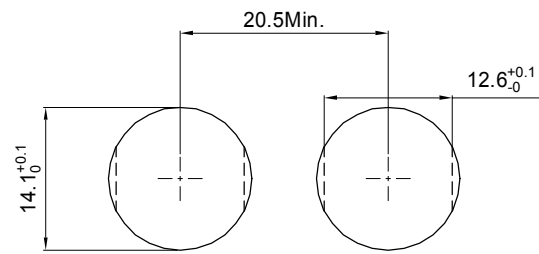
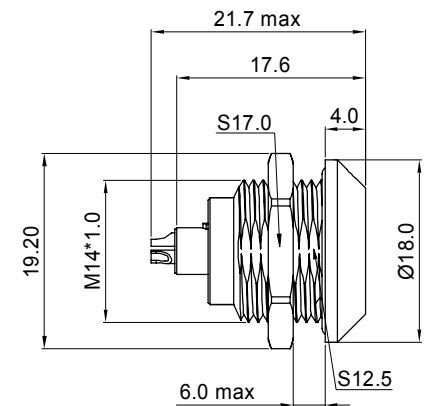


NOTE:

- MATERIAL AND FINISH
SHELL ASSEMBLY: COPPER ALLOY, OUTER SHELL AND COLLECT NUT Cr PLATING, OTHER METALLIC COMPONENTS Ni PLATING.
INSULATOR: PEEK
CONTACT: COPPER ALLOY, GOLD PLATING OVER Ni
- DURABILITY: 5000 CYCLES
- PROTECTION INDEX(MATED): IP66/IP68, IP68 ACHIEVED PROVIDING THAT THE CABLE IS PERFECTLY CIRCULAR AND THAT ASSEMBLY PROCESS ENSURES A HIGH INTEGRITY SEAL.
- HUMIDITY: UP TO 95% AT 60°C
- TEMPERATURE: -55°C,+200°C
- RoHS COMPLIANCE.
- PART NO.:



PANEL CUT-OUT



R - F 0 K R * * 0 * 0 0 * 0 0

CONTACT POS.	02-09=2pin-9pin
SHELL MATERIAL	0=Brass

CODE	KEY ANGLES
0	0
A	30°
B	60°
..	..

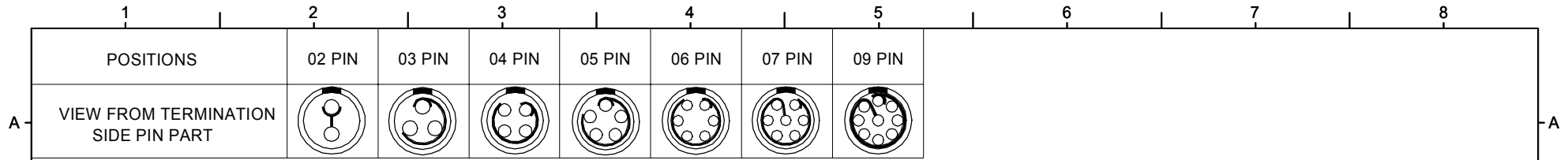
CODE	CONTACT TYPE
4	Female Solder Contact
2	Male Solder Contact



UNITS: ■ mm □ inch	SIZE A3	NAME: Snap Latch Metal 0KR Fixed Socket	 NEXTRONICS ENGINEERING CORP.								
GENERAL TOLERANCE: (UNLESS SPECIFIED)		PART NO: R-F0KR**0*00*00	TITLE: CUSTOMER DWG.								
4 PLACE	± **	± **	APPD: Alex梁良駒	2019/11/19	DWG NO: 010-0000-B86						
3 PLACE	± 0.1	± **	CHKD: Ken張永	2019/11/19							
2 PLACE	± 0.3	± **	DRAW: Ellen孫郁婷	2019/11/18	<table border="1"> <tr> <th>SCALE</th> <th>SHEET</th> <th>REV.</th> </tr> <tr> <td>2/1</td> <td>1/4</td> <td>B1</td> </tr> </table>	SCALE	SHEET	REV.	2/1	1/4	B1
SCALE	SHEET	REV.									
2/1	1/4	B1									
1 PLACE	± 0.5	± **	DESIGN: Cayley梁思雅	2019/11/11							
ANGLES	X° ± 2°										

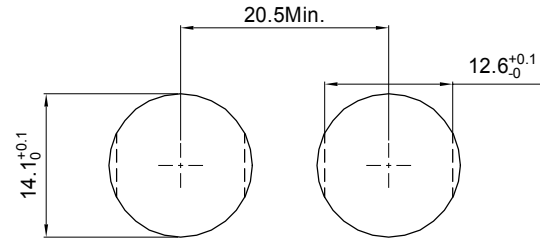
REV.	DESCRIPTION	DATE
B1	UPDATE DWG	11/11'19
B	ECN-17057	8/14'17

CONFIDENTIAL: THIS DOCUMENT CONTAINED THE INFORMATION IS PROPRIETARY AND CONFIDENTIAL TO Nexttronics Engineering Corp. NO PERSON IS ALLOWED TO USE COPY, PUBLISH OR OTHERWISE DISCLOSE THE INFORMATION TO OTHERS, UNLESS BY THE PRIOR WRITTEN EXPRESS AUTHORIZATION OF Nexttronics Engineering Corp. (C)COPYRIGHT- Nexttronics Engineering Corp.

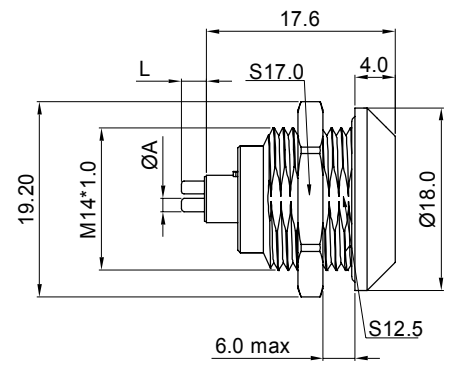


NOTE:

- MATERIAL AND FINISH
SHELL ASSEMBLY: COPPER ALLOY, OUTER SHELL AND COLLECT NUT Cr PLATING, OTHER METALLIC COMPONENTS Ni PLATING.
INSULATOR: PEEK
CONTACT: COPPER ALLOY, GOLD PLATING OVER Ni
- DURABILITY: 5000 CYCLES
- PROTECTION INDEX(MATED): IP66/IP68, IP68 ACHIEVED PROVIDING THAT THE CABLE IS PERFECTLY CIRCULAR AND THAT ASSEMBLY PROCESS ENSURES A HIGH INTEGRITY SEAL.
- HUMIDITY: UP TO 95% AT 60°C
- TEMPERATURE: -55°C, +200°C
- RoHS COMPLIANCE.
- PART NO.:



PANEL CUT-OUT



R - F 0 K R ** 0 * 0 0 * 0 0

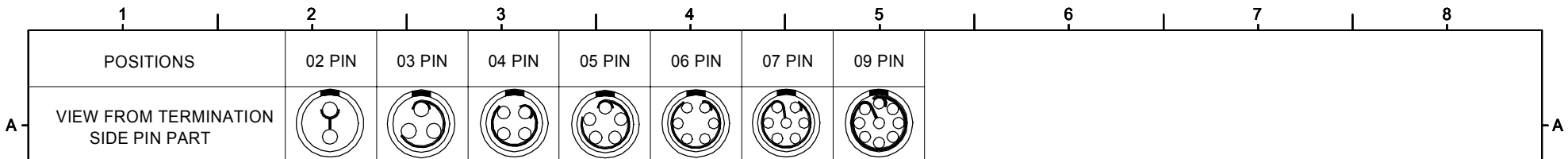
CONTACT POS. 02-09=2pin-9pin	CODE KEY ANGLES
SHELL MATERIAL 0=Brass	
CODE CONTACT TYPE	
1 Male Print Contact	0 0
3 Female Print Contact	A 30°
	B 60°



B1	UPDATE DWG	11/11/19
B	ECN-17057	8/14/17
REV.	DESCRIPTION	DATE

UNITS: mm inch	SIZE A3	NAME: Snap Latch Metal 0KR Fixed Socket	 NEXTRONICS ENGINEERING CORP.								
GENERAL TOLERANCE: (UNLESS SPECIFIED)		PART NO: R-F0KR**0*00*00	TITLE: CUSTOMER DWG.								
4 PLACE	± **	inch ± **	APPD: Alex梁良駒	2019/11/19	DWG NO: 010-0000-B86						
3 PLACE	± 0.1	inch ± **	CHKD: Ken張永	2019/11/19							
2 PLACE	± 0.3	inch ± **	DRAW: Ellen孫郁婷	2019/11/18	<table border="1"> <tr> <td>SCALE</td> <td>SHEET</td> <td>REV.</td> </tr> <tr> <td>2/1</td> <td>2/4</td> <td>B1</td> </tr> </table>	SCALE	SHEET	REV.	2/1	2/4	B1
SCALE	SHEET	REV.									
2/1	2/4	B1									
1 PLACE	± 0.5	inch ± **	DESIGN: Cayley梁思雅	2019/11/11							
ANGLES	X° ± 2°										

CONFIDENTIAL: THIS DOCUMENT CONTAINED THE INFORMATION IS PROPRIETARY AND CONFIDENTIAL TO Nexttronics Engineering Corp. NO PERSON IS ALLOWED TO USE COPY, PUBLISH OR OTHERWISE DISCLOSE THE INFORMATION TO OTHERS, UNLESS BY THE PRIOR WRITTEN EXPRESS AUTHORIZATION OF Nexttronics Engineering Corp. (C)COPYRIGHT- Nexttronics Engineering Corp.



NOTE:

1. MATERIAL AND FINISH
SHELL ASSEMBLY: COPPER ALLOY, OUTER SHELL AND COLLECT NUT Cr PLATING, OTHER METALLIC COMPONENTS Ni PLATING.
INSULATOR: PEEK
CONTACT: COPPER ALLOY, GOLD PLATING OVER Ni

2. DURABILITY: 5000 CYCLES

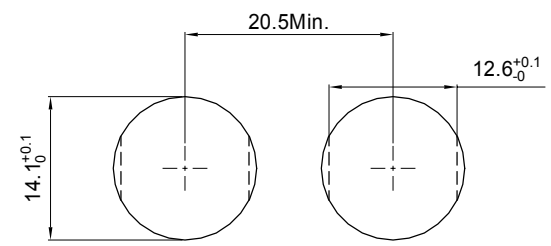
3. PROTECTION INDEX(MATED): IP66/IP68, IP68 ACHIEVED PROVIDING THAT THE CABLE IS PERFECTLY CIRCULAR AND THAT ASSEMBLY PROCESS ENSURES A HIGH INTEGRITY SEAL.

4. HUMIDITY: UP TO 95% AT 60°C

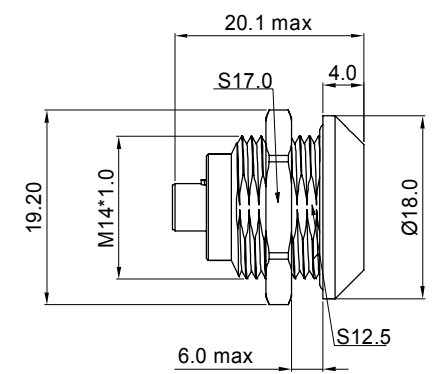
5. TEMPERATURE: -55°C,+200°C

6. RoHS COMPLIANCE.

7. PART NO.:



PANEL CUT-OUT



R - F 0 K R * * 0 * 0 0 * 0 0

CONTACT POS.	02-09=2pin-9pin
SHELL MATERIAL	0=Brass
CODE	CONTACT TYPE
C	Crimp Male Contact
M	Crimp Female Contact

CODE	KEY ANGLES
0	0
A	30°
B	60°
..	..

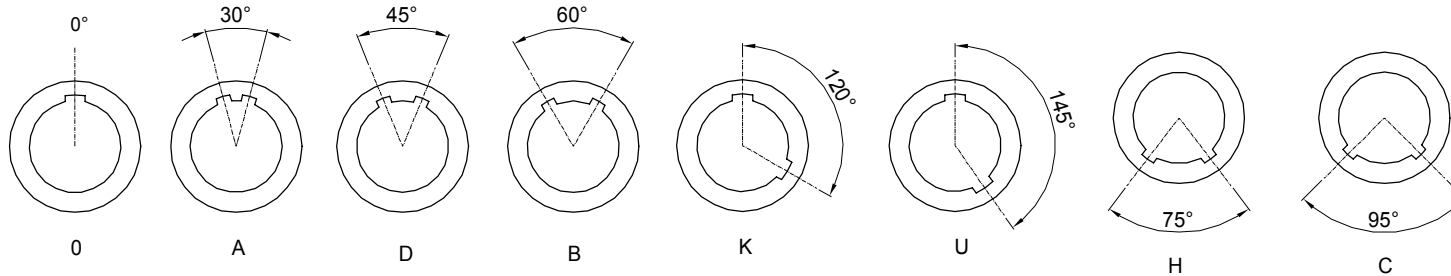


B1	UPDATE DWG	11/11'19
B	ECN-17057	8/14'17
REV.	DESCRIPTION	DATE

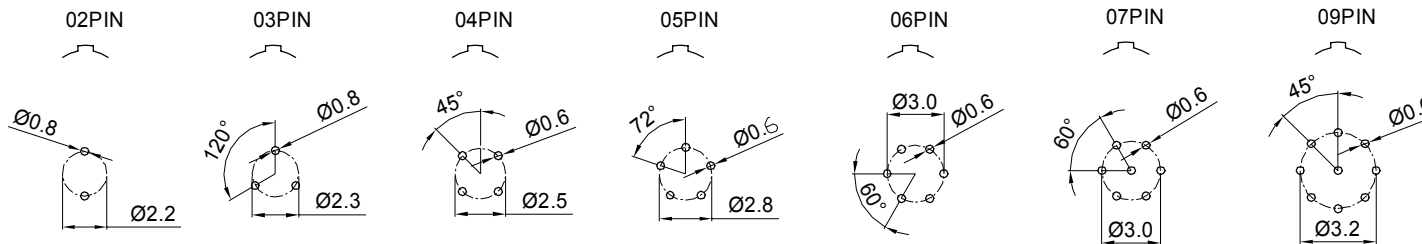
UNITS: ■ mm □ inch	SIZE A3	NAME: Snap Latch Metal 0KR Fixed Socket	 NEXTRONICS ENGINEERING CORP.								
GENERAL TOLERANCE: (UNLESS SPECIFIED)		PART NO: R-F0KR**0*00*00	TITLE: CUSTOMER DWG.								
4 PLACE ± **	± . **	APPD: Alex梁良駒 2019/11/19	DWG NO: 010-0000-B86								
3 PLACE ± 0.1	± . **	CHKD: Ken張永 2019/11/19	<table border="1"> <tr> <th>SCALE</th> <th>SHEET</th> <th>REV.</th> </tr> <tr> <td>2/1</td> <td>3/4</td> <td>B1</td> </tr> </table>			SCALE	SHEET	REV.	2/1	3/4	B1
SCALE	SHEET	REV.									
2/1	3/4	B1									
2 PLACE ± 0.3	± . **	DRAW: Ellen孫郁婷 2019/11/18									
1 PLACE ± 0.5	± . **	DESIGN: Cayley梁思雅 2019/11/11									
ANGLES	X° ± 2°										

CONFIDENTIAL: THIS DOCUMENT CONTAINED THE INFORMATION IS PROPRIETARY AND CONFIDENTIAL TO Nexttronics Engineering Corp. NO PERSON IS ALLOWED TO USE COPY, PUBLISH OR OTHERWISE DISCLOSE THE INFORMATION TO OTHERS, UNLESS BY THE PRIOR WRITTEN EXPRESS AUTHORIZATION OF Nexttronics Engineering Corp. (C)COPYRIGHT- Nexttronics Engineering Corp.

KEY ANGLES (RECEPTACLE FRONT VIEW):



PCB DRILLING PATTERN



B1	UPDATE DWG	11/11'19
B	ECN-17057	8/14'17
REV.	DESCRIPTION	DATE

UNITS: ■ mm □ inch	SIZE A3	NAME: Snap Latch Metal 0KR Fixed Socket	 NEXTRONICS ENGINEERING CORP.		
GENERAL TOLERANCE: (UNLESS SPECIFIED)		PART NO: R-F0KR**0*00*00	TITLE: CUSTOMER DWG.		
4 PLACE	± **	± **	APPD: Alex梁良駒	2019/11/19	DWG NO: 010-0000-B86
3 PLACE	± 0.1	± **	CHKD: Ken張永	2019/11/19	
2 PLACE	± 0.3	± **	DRAW: Ellen孫郁婷	2019/11/18	SCALE SHEET REV. 2/1 4/4 B1
1 PLACE	± 0.5	± **	DESIGN: Cayley梁思雅	2019/11/11	
ANGLES	X° ± 2°				

CONFIDENTIAL: THIS DOCUMENT CONTAINED THE INFORMATION IS PROPRIETARY AND CONFIDENTIAL TO Nexttronics Engineering Corp. NO PERSON IS ALLOWED TO USE COPY, PUBLISH OR OTHERWISE DISCLOSE THE INFORMATION TO OTHERS, UNLESS BY THE PRIOR WRITTEN EXPRESS AUTHORIZATION OF Nexttronics Engineering Corp. (C)COPYRIGHT- Nexttronics Engineering Corp.