

6

5

4

3

2

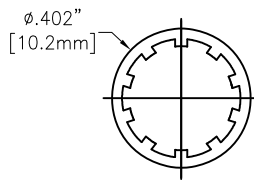
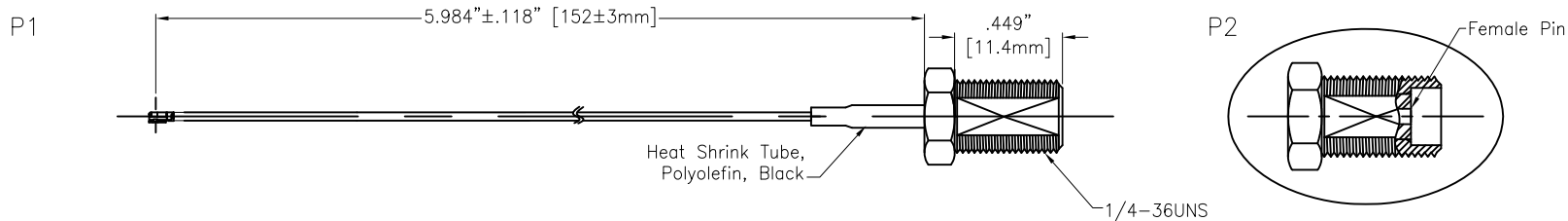
1

Rev	AWO #	Description	Date	Appr
-		RELEASED	11/16/18	

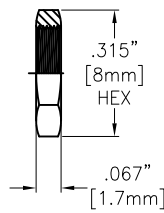
APPROVED: \_\_\_\_\_

DATE: \_\_\_\_\_ TITLE: \_\_\_\_\_

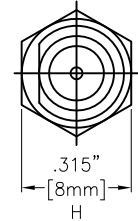
CUSTOM CABLE ASSEMBLIES ARE NON-CANCELLABLE / NON-RETURNABLE



Washer:  
Brass, Gold



Nut:  
Brass, Gold



**SPECIFICATIONS:**

**Connector:**

P1= I-PEX (IV) Connector, Gold plated

P2= SMA Jack, Straight, Female pin, Gold plated

**Cable:**

Ø1.13mm Coaxial Cable, Color: Black

**Electrical:**

Impedance: 50 ohms

Frequency range: DC-6 GHz

**Electrical Test:**

All Assemblies must be 100% Tested for Shorts, Open, Continuity, and Physical Appearance.

**Environmental:**

Operating Temperature: -45°C to +85°C

Lead free, RoHS compliant



UNLESS OTHERWISE SPECIFIED ALL DIMENSIONS ARE INCHES [MM] TOLERANCES: EXCEPT AS NOTED INCHES HOLES		<b>ADAM TECH</b>		909 Rahway Avenue, Union, NJ 07083 Phone: 908-687-5000 Fax: 908-687-5710	
.X ± .10		Ø.X ± .10		TITLE CUSTOM CABLE ASSEMBLY, IPEX IV PLUG TO SMA S/T JACK WITH OD 1.13MM CABLE	
.XX ± .020		Ø.XX ± .015			
.XXX ± .015		Ø.XXX ± .010		SIZE	PART NO.
APPROVALS		DATE		X	CA#DKCA1-152L0-AJ15
DRAWN	AY	11/16/18		REV.	-
CHECKED	AC	11/16/18		REF:	S00291T
APPROVED				SCALE:	NTS
				SHEET 1 OF 1	

6

5

4

3

2

1