

FS1 - S02 - 1XXX

**MOUNTING SCREW OPTION**

- 1 = 8 mm MOUNTING SCREW SHIPPED BULK IN SAME TRAYS WITH CAGE ASSEMBLIES
- 2 = NO MOUNTING SCREW SUPPLIED
- 3 = 10 mm MOUNTING SCREW WITH LOCK WASHER SHIPPED BULK IN SAME TRAYS WITH CAGE ASSEMBLIES

**GASKET OPTION**

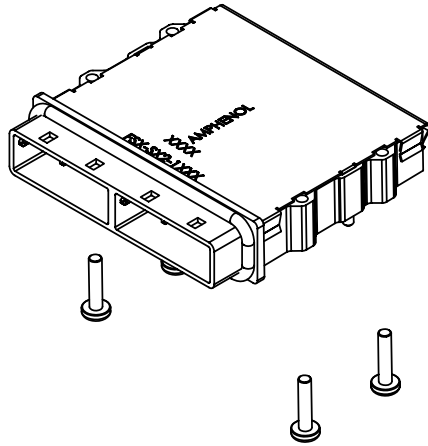
- F = STAINLESS STEEL EMI GASKET
- FF = FOAM, CHOMERIC SOFT SHIELD 4800, EMI GASKET
- C = CONDUCTIVE ELASTOMER, CHOMERIC SC6305

**KEYING OPTION (SEE BELOW TABLE FOR FURTHER CLARIFICATION)**

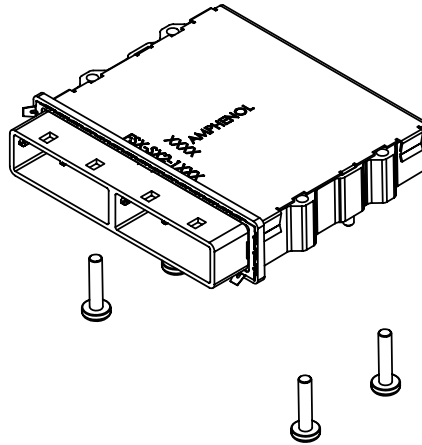
- 0 = NO KEY
- 1 = KEY #1 (IN ALL PORTS)
- 2 = KEY #2 (IN ALL PORTS)
- 4 = KEY #4 (IN ALL PORTS)
- 6 = KEY #6 (IN ALL PORTS)
- 7 = KEY #7 (IN ALL PORTS)
- D22 = KEY #2 AND #4 (IN ALL PORTS)
- D66 = KEY #4 AND #6 (IN ALL PORTS)
- D26 = KEY #2 AND #4 IN LEFT PORT / KEY #4 AND #6 IN RIGHT PORT
- D62 = KEY #4 AND #6 IN LEFT PORT / KEY #2 AND #4 IN RIGHT PORT

Left Key Option	Right Key Option	Part Number	Description
0	0	FS1-S02-10XX	No Key
1	1	FS1-S02-11XX	SATA 'X' Cable
4	4	FS1-S02-14XX	SAS Universal Port
7	7	FS1-S02-17XX	SATA 'M' Cable
2,4	2,4	FS1-S02-1D22XX	SAS Out Port
4,6	4,6	FS1-S02-1D66XX	SAS In Port
2,4	4,6	FS1-S02-1D26XX	SAS Out/In Port
4,6	2,4	FS1-S02-1D62XX	SAS In/Out Port

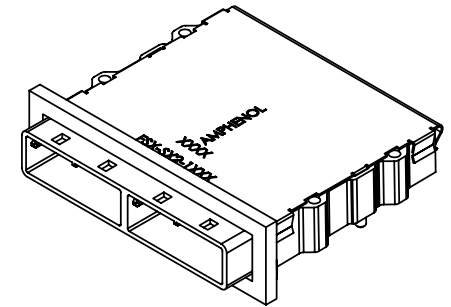
REVISIONS				
REV	ECN	DESCRIPTION	DATE	APPROVED
S		ELASTOMERIC GASKET OPTION ADDED	SEP 10/08	ZLJ
T		DETAILS ADDED	JAN 14/10	ZLJ



PART NUMBER: FS1-S02-14C1 SHOWN  
(CAGE ASSEMBLY WITH ELASTOMERIC GASKET AND 8mm MOUNTING SCREWS SHIPPED BULK)



PART NUMBER: FS1-S02-14E1 SHOWN  
(CAGE ASSEMBLY WITH STAINLESS STEEL GASKET AND 8mm MOUNTING SCREWS SHIPPED BULK)



PART NUMBER: FS1-S02-14F1 SHOWN  
(CAGE ASSEMBLY WITH FOAM GASKET AND 8mm MOUNTING SCREWS SHIPPED BULK)

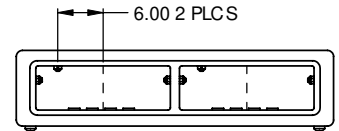
DO NOT SCALE DRAWING

THIS DOCUMENT CONTAINS PROPRIETARY INFORMATION AND SUCH INFORMATION MAY NOT BE DISCLOSED TO OTHERS FOR ANY PURPOSE OR USED FOR MANUFACTURING PURPOSES WITHOUT PERMISSION FROM AMPHENOL CANADA CORP.

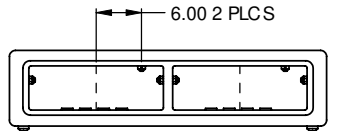


UNLESS OTHERWISE SPECIFIED DIMENSIONS ARE IN MILLIMETERS TOLERANCES ARE:		APPROVALS		DATE		Amphenol Canada Corp.	
DECIMALS	ANGLES	DRAWN	ZLJ	NOV 7/08	TITLE		
.X ± 0.25	± 2°	DESIGNED	ZLJ	NOV 7/08	MINI SAS1 DEG FREE 2 PORT CAGE		
.XX ± 0.10		CHECKED					
.XXX ± 0.05		DRAWN					
MATERIAL AND FINISH		DATE					
DWG. REVISION	EAR 123XXX	SCALE	C	DWG. NO.	P-FS1-S02-1XXX	REV	T
CODE/DBY NO.	03554	DWG. APPD.		SCALE	NTS	PROJECT	1 OF 2

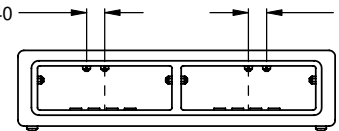
REVISIONS				
REV	ECN	DESCRIPTION	DATE	APPROVED
S		SEE SHEET 1	SEP 15/09	ZJ
T		SEE SHEET 1	JAN 14/10	ZJ



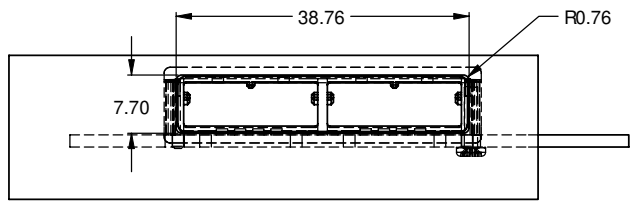
KEY # 1-1



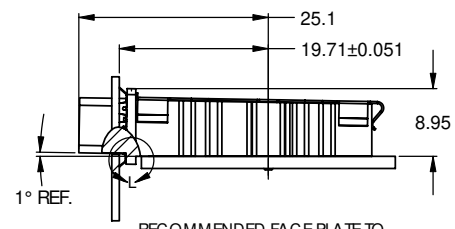
KEY # 7-7



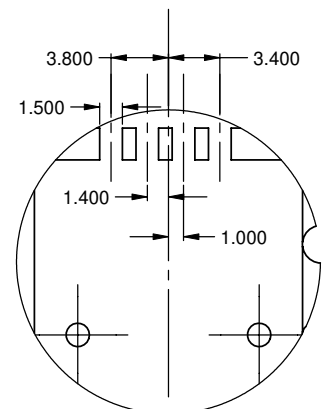
KEY # 2, 4 - 4, 6



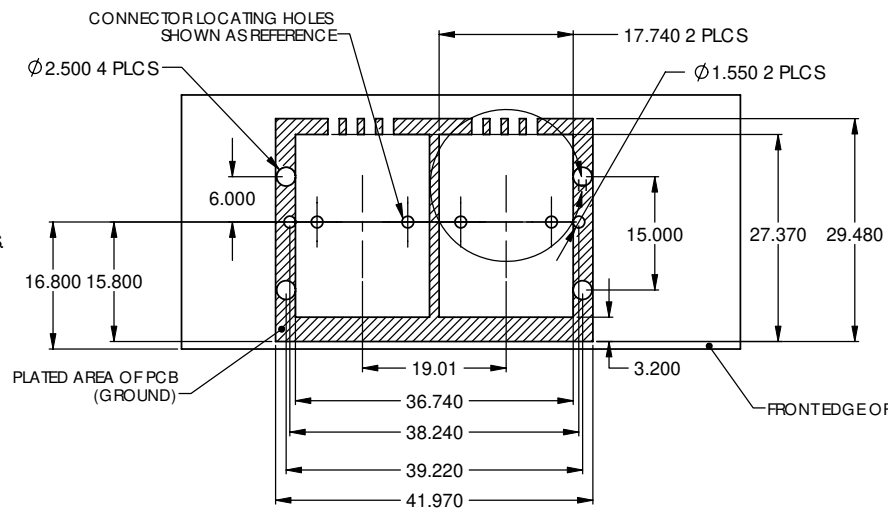
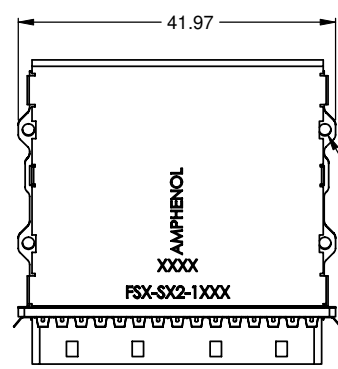
RECOMMENDED PANEL CUT-OUT



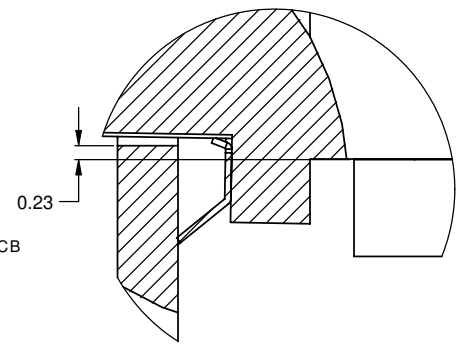
RECOMMENDED FACE PLATE TO LOCATING POST DISTANCE



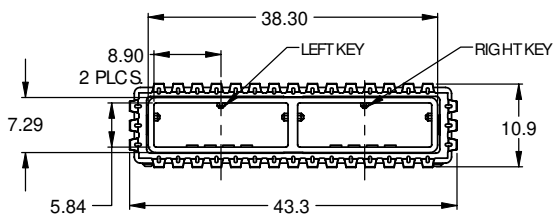
DETAIL H  
SCALE 4:1



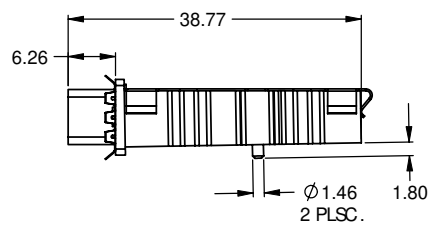
RECOMMENDED PCB LAYOUT



DETAIL L  
SCALE 16:1



KEY # 4-4



DO NOT SCALE DRAWING

NOTES:

1) MATERIAL:

CAGE: ZINC DIECAST SHELL WITH 150 MICRONS OF NICKEL PLATING  
EMC GASKET: SEE SHEET 1  
COVER: STAINLESS STEEL  
MOUNTING SCREW: AISI 1010 STEEL

2) ROHS COMPLIANT



APPROVALS		DATE	Amphenol Canada Corp.	
DRAWN: ZJ	SEP 19/08	TITLE:	MINI SAS1 DEGREE 2 PORT CAGE	
CHECKED: ZJ	SEP 19/08	SCALE:	NTS	
DRAWN: C	SEP 19/08	PROJECT:	P-FSI-S02-1XXX	
DWG NO: EAR 123XX	DWG APPD:	SHEET:	2 OF 2	
CODE/REV NO: 03554	DWG APPD:	SCALE:	NTS	

THIS DOCUMENT CONTAINS PROPRIETARY INFORMATION AND SUCH INFORMATION MAY NOT BE DISCLOSED TO OTHERS FOR ANY PURPOSE OR USED FOR MANUFACTURING PURPOSES WITHOUT PERMISSION FROM AMPHENOL CANADA CORP.