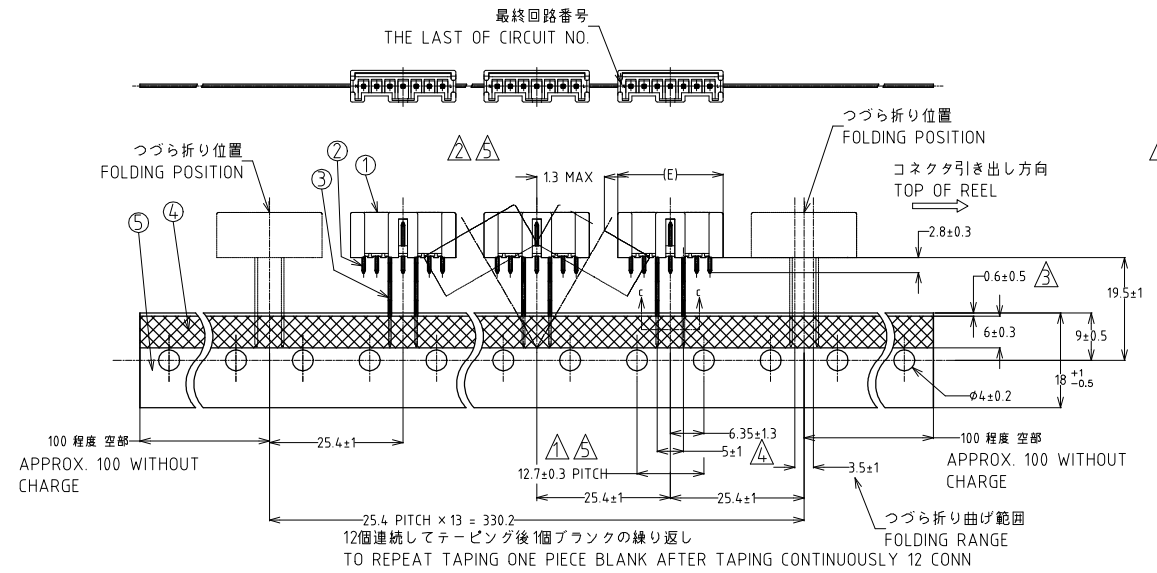


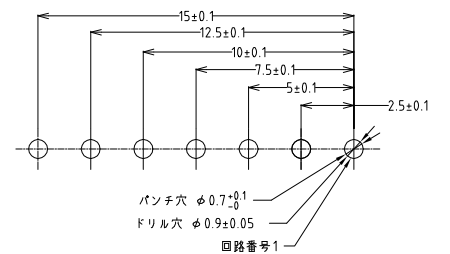
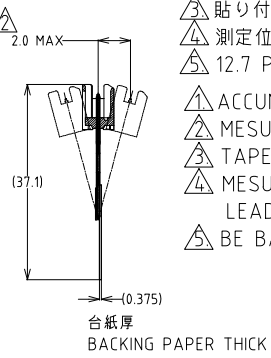
THIS DRAWING IS UNPUBLISHED. RELEASED FOR PUBLICATION - . . .  
 © COPYRIGHT - By - ALL RIGHTS RESERVED.

LOC	DIST	REVISIONS					
J	-	P	LTR	変更 DESCRIPTION	DATE	DWN	APVD
		E		REVISED	05AUG10	T.K	N.Y
		E1		REVISED PER ECR-14-010027	06AUG14	O.C	D.Z
		E2		REVISED PER ECR-20-000768	12FEB2020	SM	D.Z

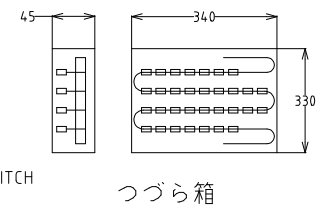
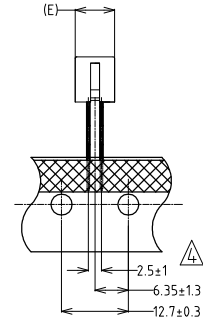
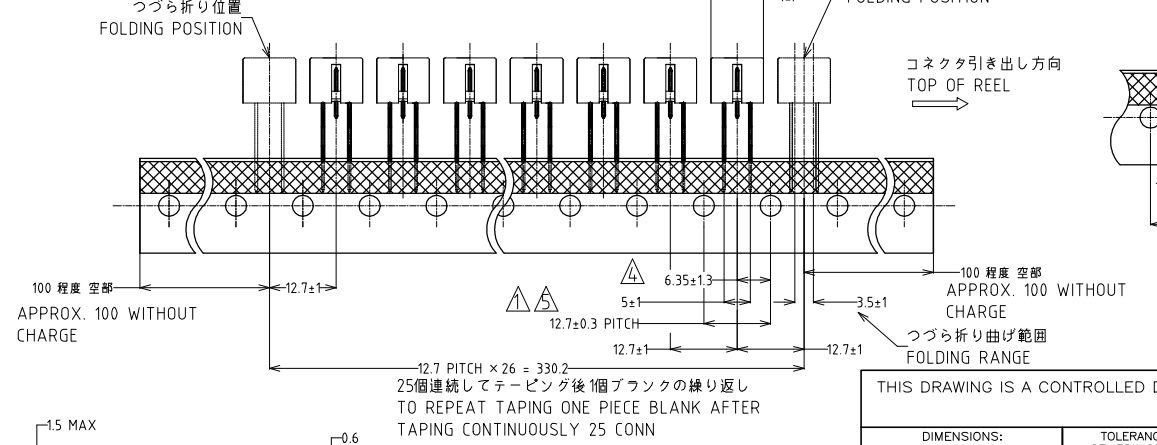
テーピング仕様 B : 4極以上  
 TAPING STYLE B : 4Pos AND MORE



- △ 累積ピッチ公差は20ピッチで±1.0mmとする
- △ 測定位置はポスト先端中心とする
- △ 貼り付けテープは台紙からはみ出さないこと
- △ 測定位置はテーピングの上端位置とし、リード線の中心線との間隔とする
- △ 12.7 PITCH 寸法の中心値を基準とする
- △ ACCUMULATING TOLERANCE : ±1.0mm/20 PITCH
- △ MESURING POINT : AT TOP OF POST
- ③ TAPE MUST NOT PROTRUDE FROM BACKING PAPER
- ④ MESURING POINT, THE TOP OF TAPING AND THE CENTER LINE OF LEAD WIRE IN BETWEEN
- △ BE BASED ON THE CENTER 12.7mm PITCH DIMENSION



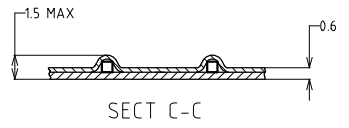
テーピング仕様 A : 2極、3極  
 TAPING STYLE A : 2Pos, 3Pos



基板取付け寸法  
 P.C.B MOUNTING LAYOUT  
 (適用基板厚 1.6mm)  
 (APPLICABLE P.C.B THK 1.6mm)

つづら箱  
 AMMO PACK

型番は、SHEET 2 OF 2 を参照  
 (P/N SEE SHEET 2 OF 2)



THIS DRAWING IS A CONTROLLED DOCUMENT.		DWN	N.YAMASAKI	3 SEP '01	TE Connectivity	2.5mm PITCH SIGNAL MATE CONN ON TAPE HEADER (V-TYPE)
		CHK	M.SHINDO	3 SEP '01		
DIMENSIONS: mm		APVD	Y.KASHIWA	3 SEP '01	NAME	名称
TOLERANCES UNLESS OTHERWISE SPECIFIED: 一般公差		PRODUCT SPEC		製品規格		
10> ±0.2		108-5703		SIZE		
30> ≧10±0.25		APPLICATION SPEC		CAGE CODE		
100> ≧30±0.3		取付適用規格		DRAWING NO		
ANGLE : ±3°		114-5286		番号		
MATERIAL 材料	SEE TABLE 2	FINISH 仕上	SEE TABLE 2	WEIGHT	A3	00779
CUSTOMER DRAWING				SCALE 尺数	SHEET	1 OF 2
				REV	E2	

