

1986775-3 ✓ ACTIVE

Buchanan

TE Internal #: 1986775-3

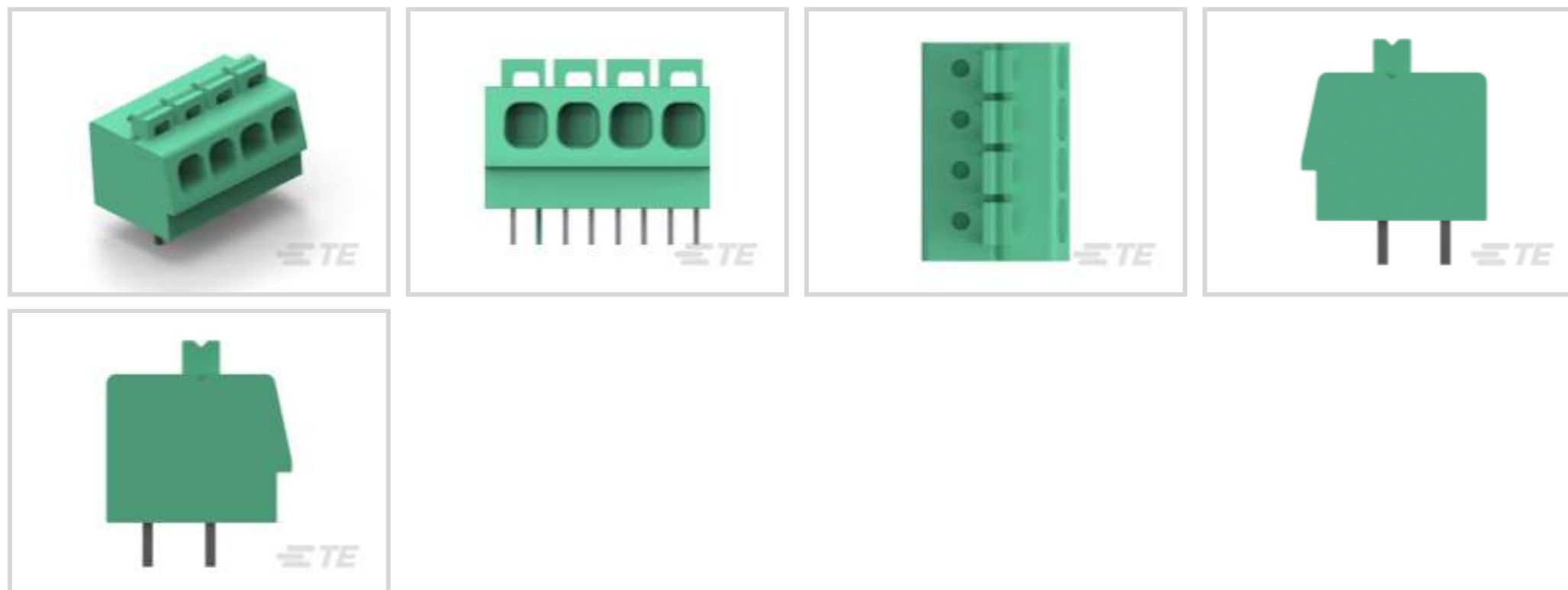
PCB Terminal Blocks, Header, Wire-to-Component, 3 Position, .2 in [5.08 mm] Centerline, 2 Row, 90° Wire Entry Angle, 20 – 1 AWG

Wire Size

[View on TE.com >](#)



Connectors > Terminal Blocks & Strips > PCB Terminal Blocks



Terminal Block Connector Type: **Header**

Connector System: **Wire-to-Component**

Number of Positions: **3**

Centerline (Pitch): **5.08 mm [.2 in]**

Number of Rows: **2**

Features

Product Type Features

Wire Protection	With
Terminal Block Connector Type	Header
Connector System	Wire-to-Component
Connector & Contact Terminates To	Printed Circuit Board

Configuration Features

Wire Entry Location	Side
Stacking Configuration	Side Stackable
Number of Positions	3
Number of Rows	2
Wire Entry Angle	90°

Electrical Characteristics

Operating Voltage	300 VAC
-------------------	---------

Body Features

Primary Product Color	Green
-----------------------	-------



Product Orientation	Vertical
---------------------	----------

Contact Features

Contact Mating Area Plating Material	Tin
Contact Base Material	Copper Alloy
Contact Current Rating (Max)	15 A

Termination Features

Termination Post & Tail Length	3.5 mm[.138 in]
Termination Method to Printed Circuit Board	Through Hole - Solder
Termination Method to Wire & Cable	Push-in, Spring Terminal

Mechanical Attachment

Connector Mounting Type	Board Mount
-------------------------	-------------

Housing Features

Housing Material	PA 66
Centerline (Pitch)	5.08 mm[.2 in]

Dimensions

Wire Size	.5 – 41 mm ²
-----------	-------------------------

Usage Conditions

Operating Temperature Range	-40 – 110 °C[-40 – 230 °F]
-----------------------------	----------------------------

Operation/Application

Circuit Application	Power & Signal
---------------------	----------------

Packaging Features

Packaging Quantity	200
Packaging Method	Package

Product Compliance

[For compliance documentation, visit the product page on TE.com>](#)

EU RoHS Directive 2011/65/EU	Compliant
EU ELV Directive 2000/53/EC	Compliant
China RoHS 2 Directive MIIT Order No 32, 2016	No Restricted Materials Above Threshold
EU REACH Regulation (EC) No. 1907/2006	Current ECHA Candidate List: JUNE 2023 (235)



Candidate List Declared Against: JUNE 2022 (224)

Does not contain REACH SVHC

Halogen Content

Low Halogen - Br, Cl, F, I < 900 ppm per homogenous material. Also BFR/CFR/PVC Free

Solder Process Capability

Not reviewed for solder process capability

Product Compliance Disclaimer

This information is provided based on reasonable inquiry of our suppliers and represents our current actual knowledge based on the information they provided. This information is subject to change. The part numbers that TE has identified as EU RoHS compliant have a maximum concentration of 0.1% by weight in homogenous materials for lead, hexavalent chromium, mercury, PBB, PBDE, DBP, BBP, DEHP, DIBP, and 0.01% for cadmium, or qualify for an exemption to these limits as defined in the Annexes of Directive 2011/65/EU (RoHS2). Finished electrical and electronic equipment products will be CE marked as required by Directive 2011/65/EU. Components may not be CE marked. Additionally, the part numbers that TE has identified as EU ELV compliant have a maximum concentration of 0.1% by weight in homogenous materials for lead, hexavalent chromium, and mercury, and 0.01% for cadmium, or qualify for an exemption to these limits as defined in the Annexes of Directive 2000/53/EC (ELV). Regarding the REACH Regulation, the information TE provides on SVHC in articles for this part number is based on the latest European Chemicals Agency (ECHA) 'Guidance on requirements for substances in articles' posted at this URL: <https://echa.europa.eu/guidance-documents/guidance-on-reach>

Compatible Parts



TE Part # 1986712-3
SCREWLESS, SW,3P,5.08 PCB



TE Part # 1986774-3
SCREWLESS, SW,3P,5.0 PCB, Low Amp



TE Part # 1986816-3
PCB SPRNG SIDE ENTRY HITEMP TB 5.08MM 3P

Customers Also Bought



TE Part #2-644486-8
08P MTA100 SHRDED HDR ASSY SN



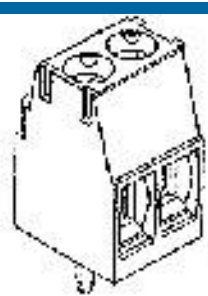
TE Part #5535070-5
ASSY,RECEPTACLE,EUROCARD,TYPE



TE Part #5650868-4
ASSY,RECEPTACLE,EUROCARD,TYPE



TE Part #5536053-5
ASSY,PIN,EUROCARD,TYPE B/2,LEA



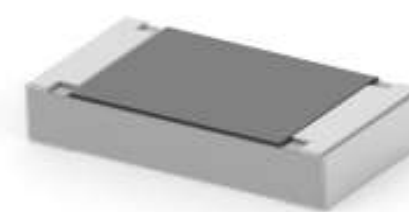
TE Part #284392-8
TERMI-BLOK PCB SIDE ENTRY STAC



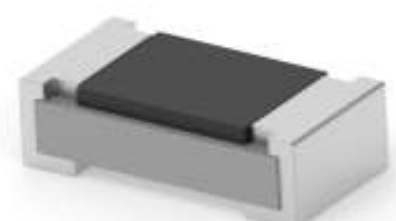
TE Part #5650477-5
ASSY,PIN,EUROCARD,TYPE R/2,LEAD-FREE,48



TE Part #1-2176237-9
CPF A 0603 330R 0.1% 25PPM 5K RL



TE Part #1-2176344-9
CRGCO 1206 1K0 5%



TE Part #2176237-8
CPF A 0603 33R 0.1% 25PPM 5K RL



TE Part #1-2176238-1
CPF A 0805 33R 0.1% 25PPM 5K RL

Documents

Product Drawings

[SCREWLESS, SW,3P,5.08 PCB, Low Amp](#)

English

CAD Files

[3D PDF](#)

3D

Customer View Model

[ENG_CVM_CVM_1986775-3_B.2d_dxf.zip](#)

English

Customer View Model

[ENG_CVM_CVM_1986775-3_B.3d_igs.zip](#)

English

Customer View Model

[ENG_CVM_CVM_1986775-3_B.3d_stp.zip](#)

English

By downloading the CAD file I accept and agree to the [Terms and Conditions](#) of use.

Datasheets & Catalog Pages

[BUCHANAN TERMINAL BLOCKS CATALOG - EUROSTYLE TERMINAL BLOCKS](#)

English

Agency Approvals

[UL](#)

English