

MATERIALS AND FINISHES :

BODY, COUPLING NUT, CRIMP TUBE BRASS  
PLATED NICKEL

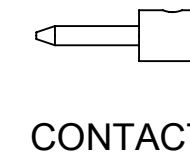
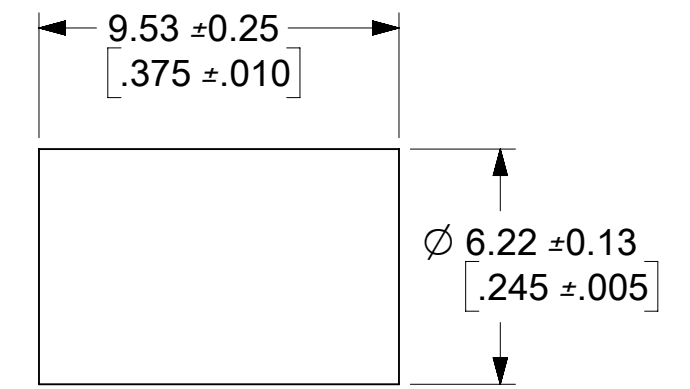
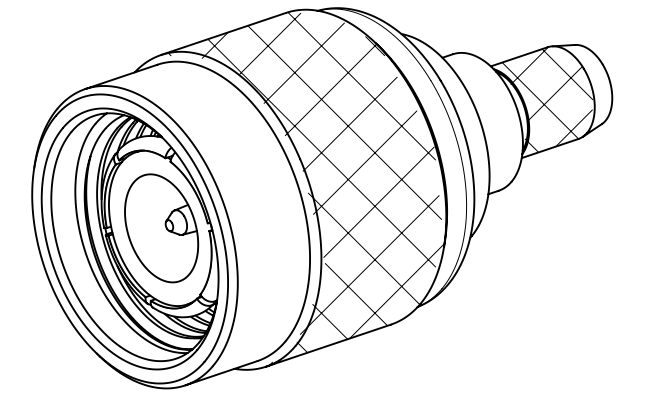
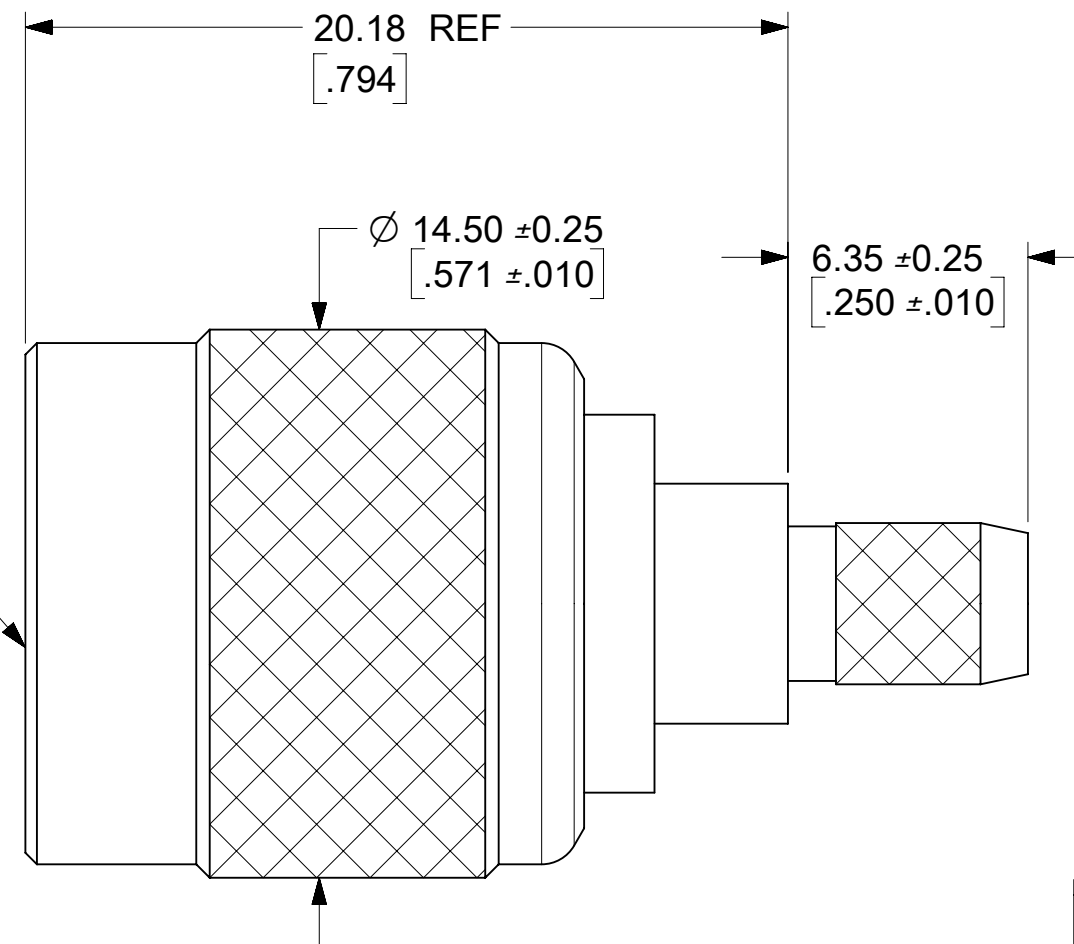
CONTACT BERYLLIUM COPPER  
PLATED GOLD (SEE TABLE)

CABLE CONTACT BRASS  
PLATED GOLD

INSULATOR TEFLON

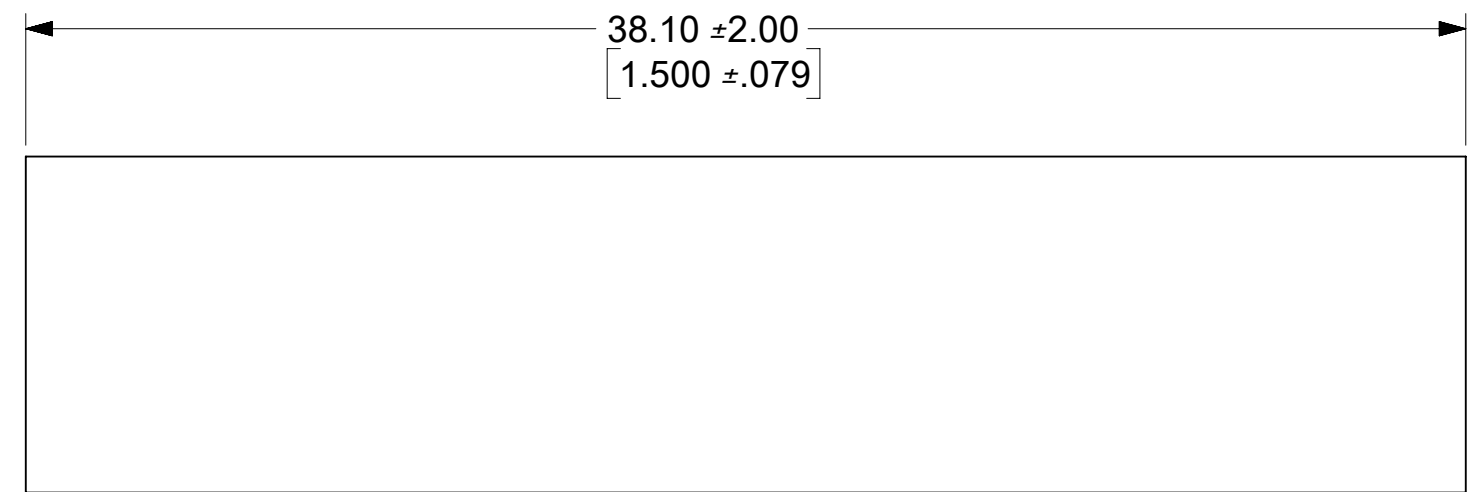
SHRINK TUBE ATUM OR EQUIVALENT

TNC PLUG IP68  
INTERFACE

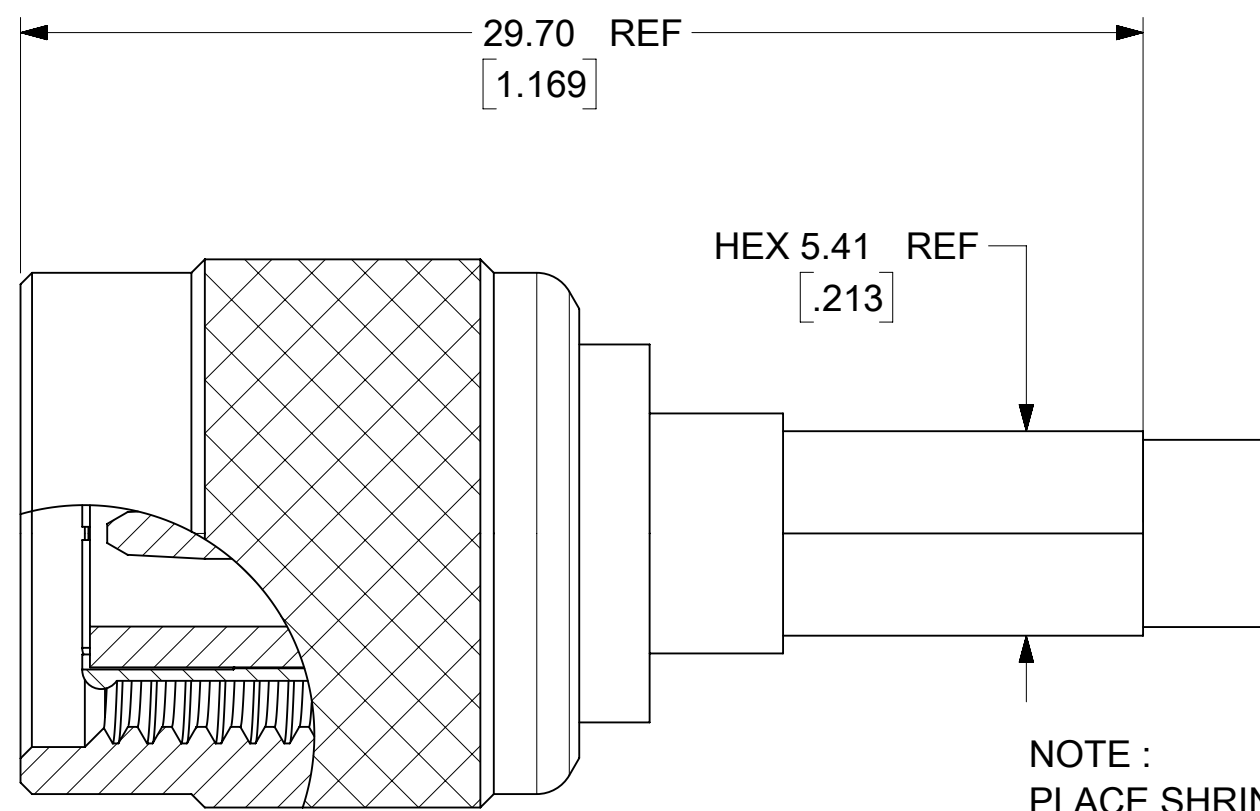


CONTACT

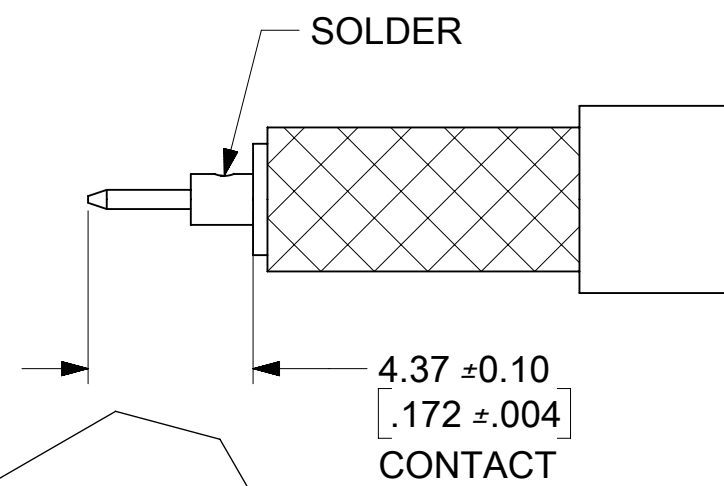
CRIMP TUBE



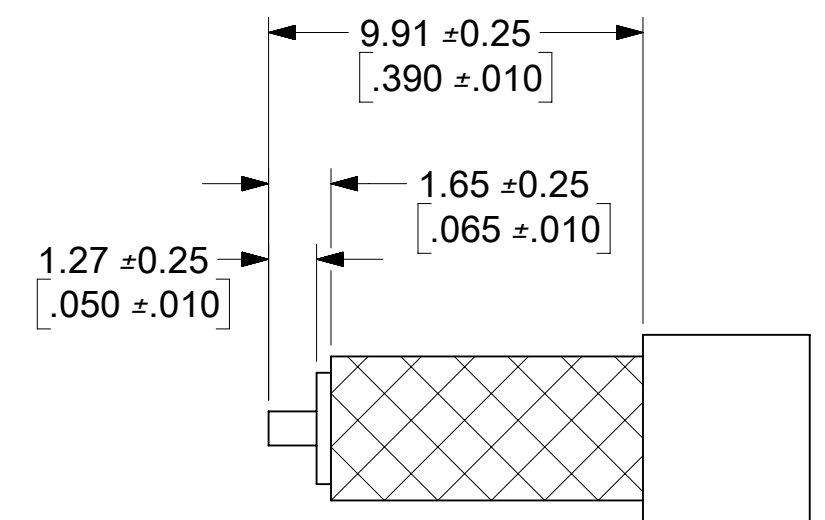
SHRINK TUBE



NOTE :  
PLACE SHRINK TUBE  
ONTO CABLE PRIOR  
TO INSERTION IN BODY



PENDING  
APPROVAL



RECOMMENDED CABLE STRIP  
DIMENSIONS

MIL - STD - 348A, FIG. 313.1	INTERFACE
SPECIFICATION	DESCRIPTION

73216-1982	10 u"	ONE PER BAG PER 89542-0080
73216-1981	10 u"	BY TRAY PER 89542-0062
73216-1980	30 u"	BY TRAY PER 89542-0062
PART NO.	CONTACT PLATING	PACKAGING

A6	2020/01/31	ADD DIM TOLERANCE PER EWR13588-A
A5	2018/10/25	ADD PKG PN PER GLSS
REV.	DATE	DESCRIPTION

SYMBOLS		THIS DRAWING CONTAINS INFORMATION THAT IS PROPRIETARY TO MOLEX ELECTRONIC TECHNOLOGIES, LLC AND SHOULD NOT BE USED WITHOUT WRITTEN PERMISSION	
▽ = 0	HYBRID	SCALE	CURRENT REV DESC:
▽ = 0	4 PLACES ±	NTS	EC NO: 631758
▽ = 0	3 PLACES ±	GENERAL TOLERANCES (UNLESS SPECIFIED)	DRWN: CWEI02 2020/01/31
▽ = 0	2 PLACES ±	ANGULAR TOL ± 2.0°	CHK'D:
▽ = 0	1 PLACE ±		APPR:
▽ = 0	0 PLACES ±		INITIAL REVISION:
□ = 0			DRWN: AROBERTSON 2008/12/15
■ = 0			APPR: JWIENER 2008/12/15
▽ = 0	DRAFT WHERE APPLICABLE MUST REMAIN WITHIN DIMENSIONS	THIRD ANGLE PROJECTION	DRAWING SERIES
		C-SIZE	73216
		MATERIAL NUMBER	CUSTOMER
		SEE TABLE	GENERAL MARKET
		DOCUMENT NUMBER	DOC TYPE   DOC PART   REVISION
		SD-73216-198	PSD 001 A6
		SHEET NUMBER	1 OF 1

**molex**

TNC PLUG STRAIGHT IP68  
FOR RG58 50 OHMS TNC-PC, EWR-3829

PRODUCT CUSTOMER DRAWING

DOCUMENT STATUS	RQ	RELEASE DATE
-----------------	----	--------------