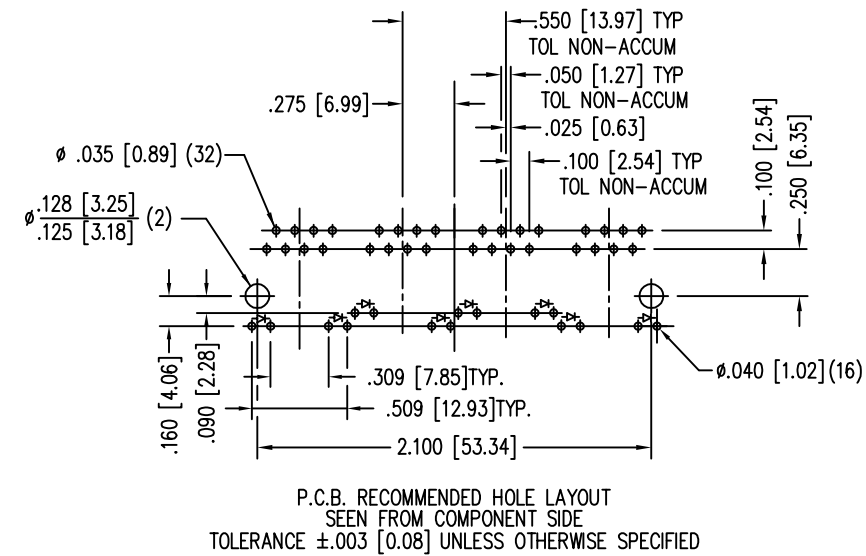
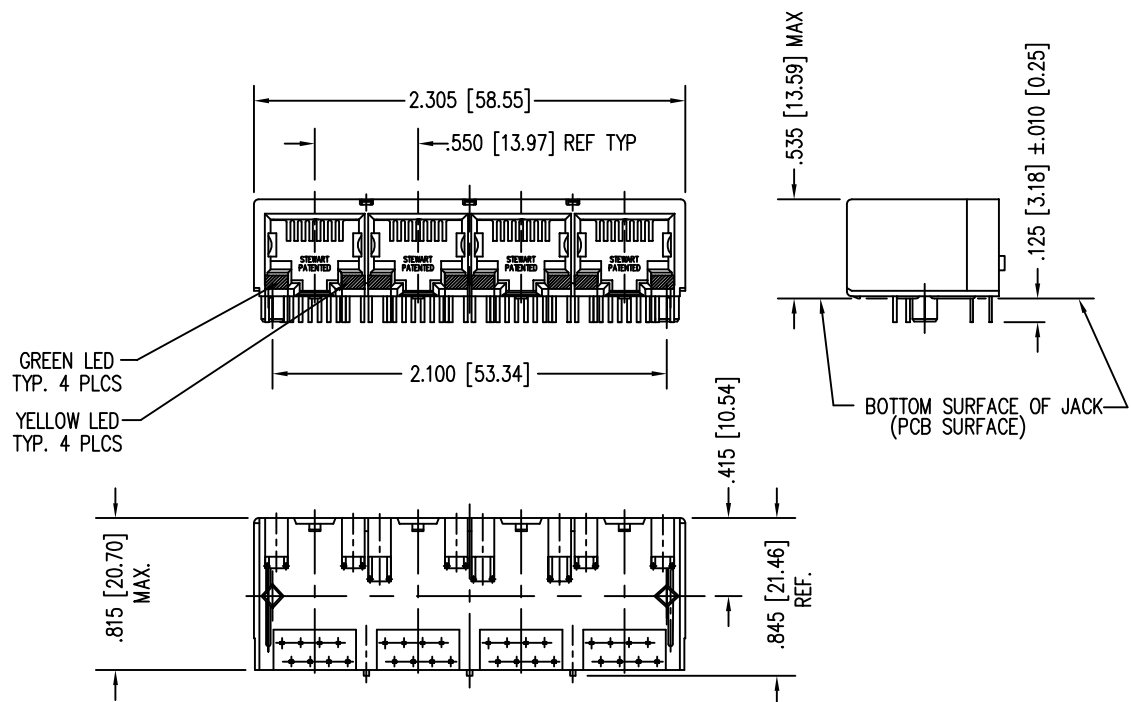


DATE	REV	ECN	APP'D. BY
1-19-15	A4	10215	TRM
3-16-16	A5	10614	TRM



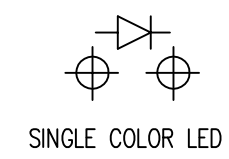
- NOTES:
- CONNECTOR MATERIALS:
HOUSING: THERMOPLASTIC UL94 V-0
CONTACTS: COPPER ALLOY
CONTACT PLATING: SELECTIVE GOLD IN CONTACT AREA
SEE CHART FOR PART NUMBER
 - FOR PRODUCT SPECIFICATIONS SEE PRO22-01.
 - DIMENSIONS AND TOLERANCES COMPLY WITH TIA-1096 STANDARD.

LED SPECIFICATION			
STANDARD LED	WAVELENGTH	FORWARD V (MAX)	*(TYP)
YELLOW	590 nm	2.5 V	2.1 V
GREEN	565 nm	2.5 V	2.2 V

*WITH A FORWARD CURRENT OF 20 mA (TYP)

30 MICRO-INCHES [0.76um]	SS-748804-GY-NF
CONTACT PLATING IN MATING AREA	PART NUMBER

LED POLARITY
(ENLARGED VIEW)



THIRD ANGLE PROJECTION	 1118 Susquehanna Trail South Glen Rock, PA 17327-9199 (717) 235-7512 http://www.stewartconnector.com						
DO NOT SCALE DRAWING DRAWING IS SUBJECT TO CHANGE WITHOUT NOTICE							
DIMENSIONS: INCHES [METRIC]	TITLE: 4 PORT PCB HARMONICA LED JACK PAC						
UNLESS OTHERWISE SPECIFIED TOLERANCES ARE ±.005 [0.13] ANGLES ARE ± 1°	THIS DRAWING AND THE SUBJECT MATTER SHOWN THEREON ARE CONFIDENTIAL AND THE PROPRIETARY PROPERTY OF STEWART CONNECTOR AND SHALL NOT BE REPRODUCED, COPIED, OR USED IN ANY MANNER WITHOUT PRIOR WRITTEN CONSENT OF STEWART CONNECTOR. ONE OR MORE U.S. PATENTS MAY APPLY TO THIS PRODUCT. FOR DETAILS, PLEASE VISIT: HTTP://BELFUSE.COM/STEWART/STEWART_PATENTS/						
SHEET NO. 1 OF 1	<table border="1"> <tr> <td>DRN BY: TM</td> <td>DATE 12-19-00</td> </tr> <tr> <td>APPD BY: BC</td> <td>DATE 12-20-00</td> </tr> <tr> <td>DWG NO. CT740062</td> <td>REV. A5</td> </tr> </table>	DRN BY: TM	DATE 12-19-00	APPD BY: BC	DATE 12-20-00	DWG NO. CT740062	REV. A5
DRN BY: TM	DATE 12-19-00						
APPD BY: BC	DATE 12-20-00						
DWG NO. CT740062	REV. A5						