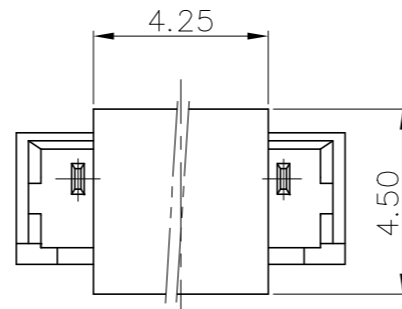
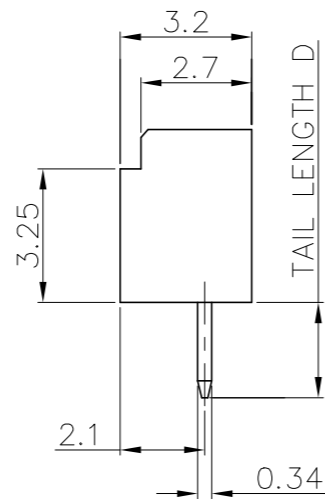
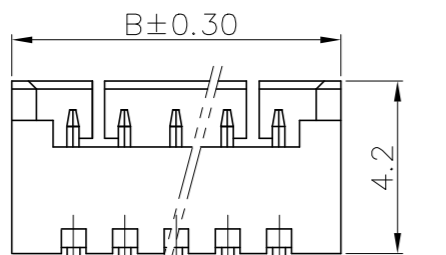
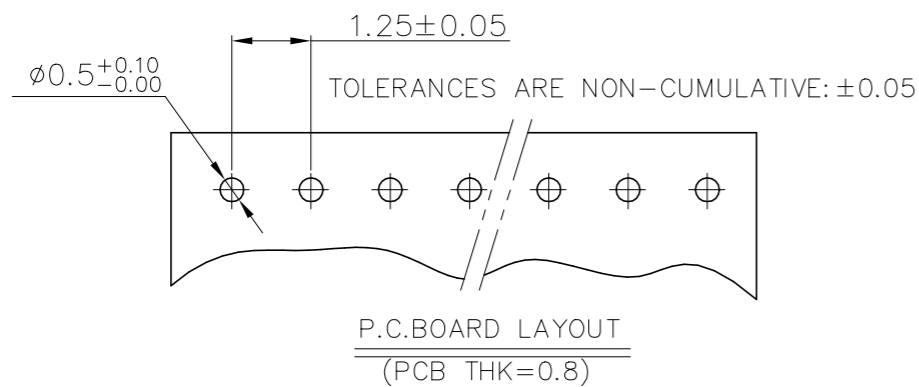
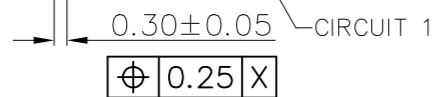


2 POS

3 POS



ASSEMBLY CAP
2POS~15POS



NOTES:

1. SPECIFICATIONS

Current Rating: 1A AC,DC
Voltage Rating: 125V AC,DC
Temperature Range: -40°C ~ +105°C
Contact Resistance: 20mΩ Max.
Insulation Resistance: 100MΩ Min.
Withstanding Voltage: 500V AC/minute

2. Material & finish:

Housing: Natural Thermoplastic, UL94V-0
Terminal: Phosphor Bronze
Plating of contact area: Matte Tin or gold plating over Nickel
Plating of solder area: Tin plated over Nickel, unless specify

3. Product specification: GS-12-675

4. Packaging specification: GS-14-1593

5. Ordering Information & Dimensions:

10114829- X X X XX LF

Material _____ pin code from 22~35(D=1.90mm)
1.LCP NATURAL pin code from 02~15(D=2.30mm)
2.LCP BLACK

Plating _____ Packaging
0: Matte Tin 1: Tape & Reel
1: Gold Flash 2: Tape&Reel+Cap
3: Gold 30u" on contact area
4: Gold Flash solder tail and 30u" gold plating on contact area

Part No.		Dimensions			
D=2.30mm	D=1.90mm	POS	A	B	C
10114829-xxx02LF	10114829-xxx22LF	2	1.25±0.10	4.25	3.05
10114829-xxx03LF	10114829-xxx23LF	3	2.50±0.10	5.50	4.30
10114829-xxx04LF	10114829-xxx24LF	4	3.75±0.10	6.75	5.55
10114829-xxx05LF	10114829-xxx25LF	5	5.00±0.10	8.00	6.80
10114829-xxx06LF	10114829-xxx26LF	6	6.25±0.15	9.25	8.05
10114829-xxx07LF	10114829-xxx27LF	7	7.50±0.15	10.50	9.30
10114829-xxx08LF	10114829-xxx28LF	8	8.75±0.15	11.75	10.55
10114829-xxx09LF	10114829-xxx29LF	9	10.00±0.15	13.00	11.80
10114829-xxx10LF	10114829-xxx30LF	10	11.25±0.20	14.25	13.05
10114829-xxx11LF	10114829-xxx31LF	11	12.50±0.20	15.50	14.30
10114829-xxx12LF	10114829-xxx32LF	12	13.75±0.20	16.75	15.55
10114829-xxx13LF	10114829-xxx33LF	13	15.00±0.20	18.00	16.80
10114829-xxx14LF	10114829-xxx34LF	14	16.25±0.20	19.25	18.05
10114829-xxx15LF	10114829-xxx35LF	15	17.50±0.20	20.50	19.30

mat'l. code		surface ISO 1302		tolerance ISO 406/ISO 1101		projection		product family	
H ELX-N-47289 JH		2023/01/17		tolerances unless otherwise specified		mm		-	
sheet index		revision sheet		angles		scale 1:1		title	
1		1		0°±2'		Amphenol FCI		WTB 1.25MM WAFER 180° DIP	
				dr Jeffrey.Huang				dwg no	
				enr Jeffrey.Huang				sheet1 of 1	
				chr TIM YAO				size	
				appd TIM YAO				A4	
								type	
								Product Customer Drawing	