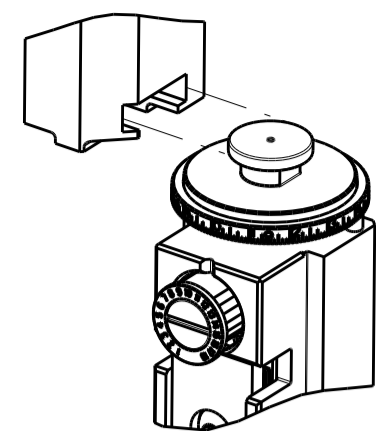


PART NUMBER	REVISION	DESCRIPTION	FEED TYPE
2151761-2	E	FINE CRIMP HEIGHT ADJUST	PNEUMATIC
7-2151761-2	E	PNEUMATIC AND CRIMP TOOLING KIT	PNEUMATIC
7-2151761-7	A	CRIMP TOOLING KIT	-

ATLANTIC VERSION TERMINATOR INTERFACE ADAPTER



APPLICATOR DATA		
CRIMP	SIZE	TYPE
WIRE	6.30 mm [.248]	F
INSUL	8.50 mm [.335]	F

APPLICATOR INSTRUCTIONS
408-35042

TERMINAL DATA: YAZAKI TERMINAL YAZAKI CRIMP SPECIFICATION			
TERMINAL NAME: L TYPE CONNECTOR			
WIRE STRIP LENGTH	INSULATION DIAMETER RANGE	TERMINAL APPLICATION SPECIFICATION	TERMINALS APPLIED
7.50-8.50 mm [.295-.335 IN]	Ø4.90-5.80 mm [.193-.228 IN]	WA1802	-
TE TERMINAL YAZAKI TERMINAL TE TERMINAL YAZAKI TERMINAL			
1949899-1	7114-3250		

TERMINAL DATA: YAZAKI TERMINAL YAZAKI CRIMP SPECIFICATION			
TERMINAL NAME: 9.5MM RECEPTACLE			
WIRE STRIP LENGTH	INSULATION DIAMETER RANGE	TERMINAL APPLICATION SPECIFICATION	TERMINALS APPLIED
7.50-8.50 mm [.295-.335 IN]	Ø4.90-5.80 mm [.193-.228 IN]	WA1802	-
TE TERMINAL YAZAKI TERMINAL TE TERMINAL YAZAKI TERMINAL			
1572755-1	7116-3250		

WIRE SIZE	CRIMP HEIGHT mm [INCH]	CRIMP HEIGHT REFERENCE SETTING
8.00mm2	2.70+/-0.05 [.106+/-0.002]	3.6
7.00mm2	2.75+/-0.05 [.108+/-0.002]	2.8
6.00mm2	2.50+/-0.05 [.098+/-0.002]	5.9
5.00mm2	2.40+/-0.05 [.094+/-0.002]	6.8

WIRE SIZE	CRIMP HEIGHT mm [INCH]	CRIMP HEIGHT REFERENCE SETTING
8.00mm2	2.75+/-0.05 [.108+/-0.002]	2.8
7.00mm2	2.75+/-0.05 [.108+/-0.002]	2.8
6.00mm2	2.60+/-0.05 [.102+/-0.002]	4.8
5.00mm2	2.40+/-0.05 [.094+/-0.002]	6.8

- 1. RECOMMENDED SPARE PARTS
- 2. REFER TO SUPPLIED INSTRUCTION SHEET FOR CLEANING, LUBRICATION AND STORAGE OF APPLICATOR.
- 3. APPLY PART NUMBER 2-23419-6 LOCTITE TO THREADS OF ITEM 242.
- 4. CRIMP HEIGHT REFERENCE SETTING WAS THE SETTING USED WHEN THE APPLICATOR WAS QUALIFIED AT THE FACTORY. ADJUSTMENT MAY BE NECESSARY WHEN RUNNING APPLICATOR IN THE FIELD.
- 5. TERMINAL PITCH NOT COMPATIBLE WITH MECHANICAL FEED.
- 6. UNLESS SPECIFIED OTHERWISE TORQUE VALUES SHALL BE USED PER DOCUMENT, 101-35000.

***WARNING**
ON INSTALLATION, SET WIRE DISC TO CRIMP HEIGHT REFERENCE SETTING FOR LARGEST WIRE SIZE. CRIMP HEIGHT REFERENCE SETTINGS GREATER THAN THE VALUE SHOWN MAY CAUSE DAMAGE TO THE CRIMP TOOLING, REFER TO THE INSTRUCTION SHEET FOR PROPER SETUP AND ADJUSTMENTS.

ATLANTIC VERSION
Shown on sheets 1 of 4 & 2 of 4
(Pacific version shown on sheets 3 of 4 & 4 of 4)

LOC	DIST	REV	DATE	BY	CHK	APP'D
A	66	B	02JAN2015	MR	GB	
		C	16MAY2018	AW	CT	
		D	30SEP2018	MZ	KZ	
		E	21JUN2019	FJ	TE	

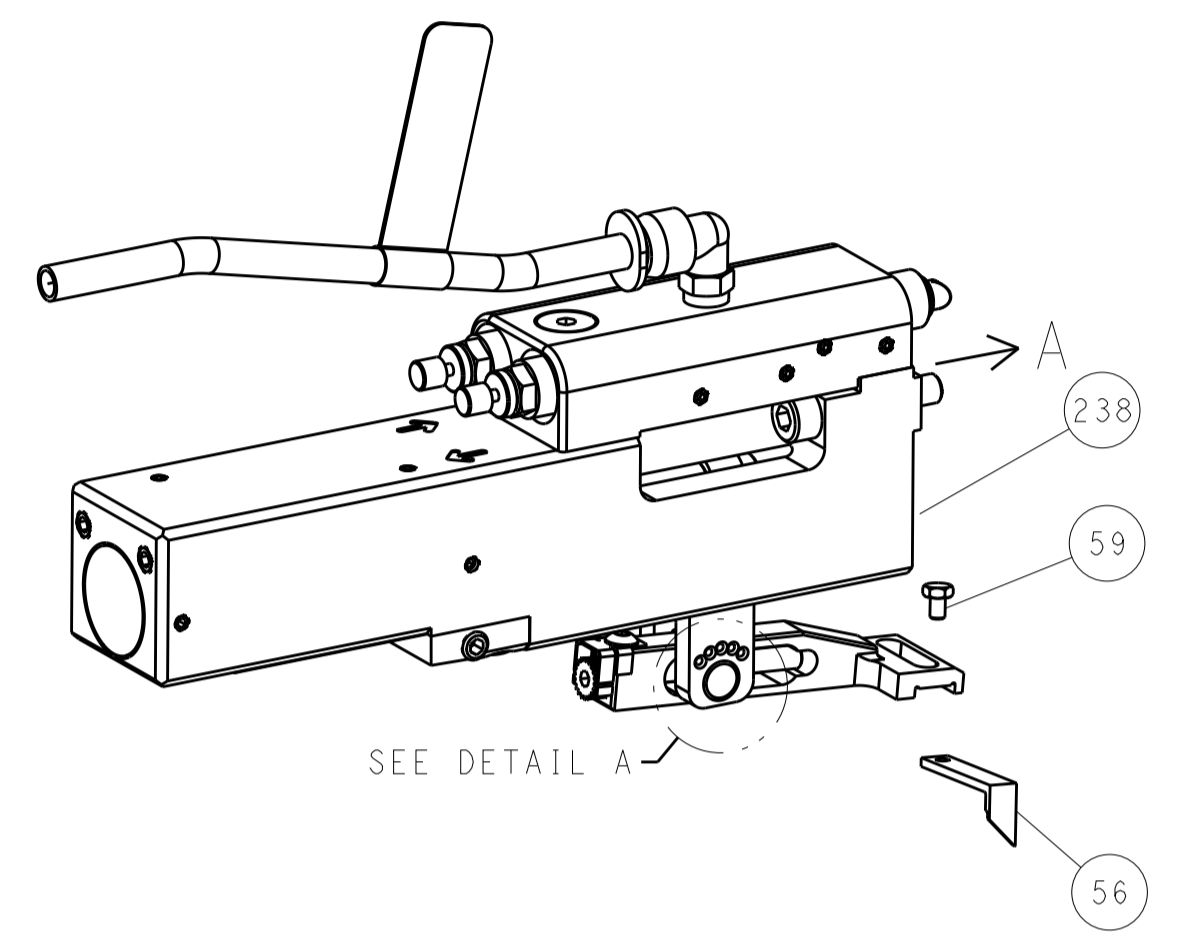
QTY	LOC	DIST	PART NO	DESCRIPTION	ITEM NO
-	2	2	2168083-2	SCR, SKT HD CAP, RoHS, M4 X 8.0	269
-	1	1	1633782-2	FENCE	267
-	1	1	1803078-2	SPACER, PRECISION	259
-	1	1	2119641-1	FEED CAM, AIR FEED	248
-	1	1	2119082-7	CAM, SNAIL, INSULATION ADJUSTMENT	244
-	1	1	2079764-1	WASHER, WAVE SPRING, CREST-TO-CREST	243
3	1	1	2119083-1	RETAINER, INSULATION DIAL	242
-	1	1	7-18023-7	SCR, SKT HD CAP M3 X 4.0	241
-	1	1	2844940-2	AIR FEED MODULE	238
-	REF	REF	994970-2	COUNTER, MAGNETIC	164
-	1	1	455888-1	SPACER, CRIMPER	120
-	1	1	2844908-1	SCREW, LOCKING	99
-	1	1	2844907-1	POST, LOCKING	98
-	1	1	1-690438-0	FRONT STRIP GUIDE	96
-	2	2	2168083-1	SCR, SKT HD CAP, RoHS, M3 X 8.0	95
-	1	1	1-455888-5	SPACER, CRIMPER	82
-	2	2	2079383-4	SCR, BHSC, RoHS (M4 X 8)	79
-	1	1	1803096-1	EXTENSION PLATE	78
-	1	1	1803607-3	DOCUMENTATION PACKAGE	71
-	1	1	2119791-5	DEPRESSOR, WIRE	70
-	1	1	2119943-1	WASHER, SPACER	69
-	1	1	2119740-1	TAG IDENTIFICATION	67
-	2	2	2168078-1	SCREW, DRIVE, RH, RoHS, 2 x .188	66
-	2	2	2-18032-5	SCR, SET, FLT PNT, M5 X 20.0	61
-	1	1	2168083-2	SCR, SKT HD CAP, RoHS, M4 X 8.0	60
-	1	1	5-18022-5	SCR, HEX HD CAP, M4 X 6.0	59
-	1	1	1338683-8	FEED PAWL	56
-	4	4	2168083-3	SCR, SKT HD CAP, RoHS, M4 X 12.0	54
-	2	2	2168083-8	SCR, SKT HD CAP, RoHS, M4 X 16	53
-	1	1	5018030-1	NUT, HEX, REG, RoHS, M3	52
-	1	1	811242-5	BUMPER, HOLD DOWN	51
-	1	1	690753-2	SPACER, TONKER	50
-	1	1	18023-9	SCR, SKT HD CAP M4 X 6.0	49
-	1	1	1803583-9	APPLICATOR BASIC ASSEMBLY, SF	46
-	1	1	1803515-2	RAM ASSEMBLY, SF ATLANTIC	44
-	1	1	1803602-2	SCR, BHSC, RoHS (M8 X 40)	41
-	1	1	1-1752356-8	SUPPORT, TERMINAL	34
-	2	2	2079383-5	SCR, BHSC, RoHS (M4 X 20)	33
-	2	2	2-2844962-3	SPACER, CYLINDRICAL, STRIP GUIDE	30
-	1	1	2844992-3	ASSEMBLY, STRIP GUIDE	29
-	1	1	1-455888-0	SPACER, CRIMPER	28
-	2	2	22283-1	SPRING, COMPRESSION	27
-	1	1	356835-1	LEVER, DRAG RELEASE	26
-	1	1	240792-1	DRAG, TERMINAL	25
-	1	1	1320928-6	STRIP GUIDE	24
-	1	1	980371-4	SCR, SKT HD SHLDR 5.0 DIA X 6.0	23
-	1	1	2168083-2	SCR, SKT HD CAP, RoHS, M4 X 8.0	21
-	2	2	1-18028-2	WASHER, FLAT, REG M4	20
-	1	1	2119533-1	STRIPPER, SIDE FEED	19
-	1	1	2119806-1	INSERT, SHEAR	13
-	1	1	3-22280-3	SPRING, COMPRESSION	12
-	1	1	1-356885-4	STOP, SHEAR	11
-	1	1	2119805-1	SHEAR HOLDER, FRONT	10
-	1	1	454276-5	FLOATING SHEAR, FRONT	9
1	2	1	1-1633930-2	ANVIL, COMBINATION	8
-	1	1	1-240641-4	SPACER	7
-	-	-	-	-	6
-	1	1	1-2119757-0	DEPRESSOR, SHEAR	5
-	1	1	238011-3	BLOCK, CRIMPER SPACER	4
1	2	1	6-2119582-3	CRIMPER, INSULATION F PREMIUM	3
-	1	1	455888-1	SPACER, CRIMPER	2
1	2	1	4-1633664-6	CRIMPER, WIRE	1
-77-72	-2		PART NO	DESCRIPTION	ITEM NO

DIMENSIONS:		TOLERANCES UNLESS OTHERWISE SPECIFIED:		DRAWN: H. HUANG 19NOV2012	
mm	0 PLC ±	1 PLC ±	2 PLC ±	3 PLC ±	4 PLC ±
ANGLES	FINISH		CHECK: S. XI 19NOV2012		APPROVED: S. XI 19NOV2012
MATERIAL	FINISH		PRODUCT SPEC		APPLICATION SPEC
WEIGHT		CAGE CODE		DRAWING NO	
CUSTOMER ACCESSIBLE PRODUCTION DRAWING		SCALE		SHEET 1 OF 4	

LOC	DIST	REVISIONS					
		P.	LTN	DESCRIPTION	DATE	DWN	APVD
A	66	-	-	SEE SHEET 1	-	-	-

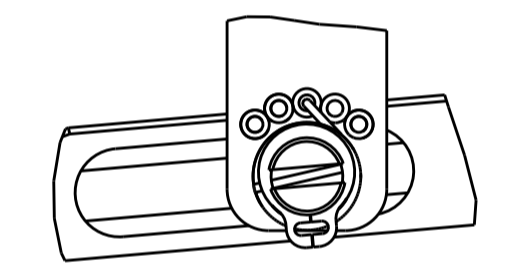
FEED TYPE

PNEUMATIC

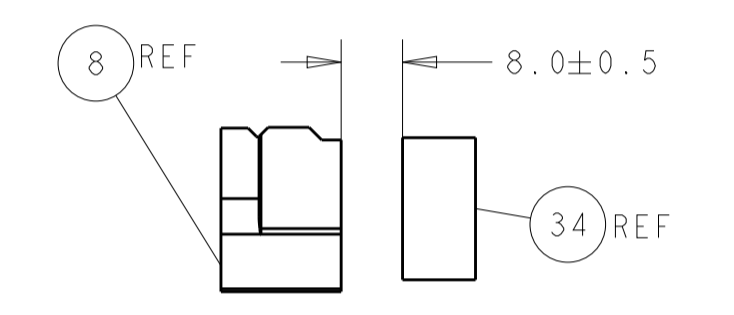
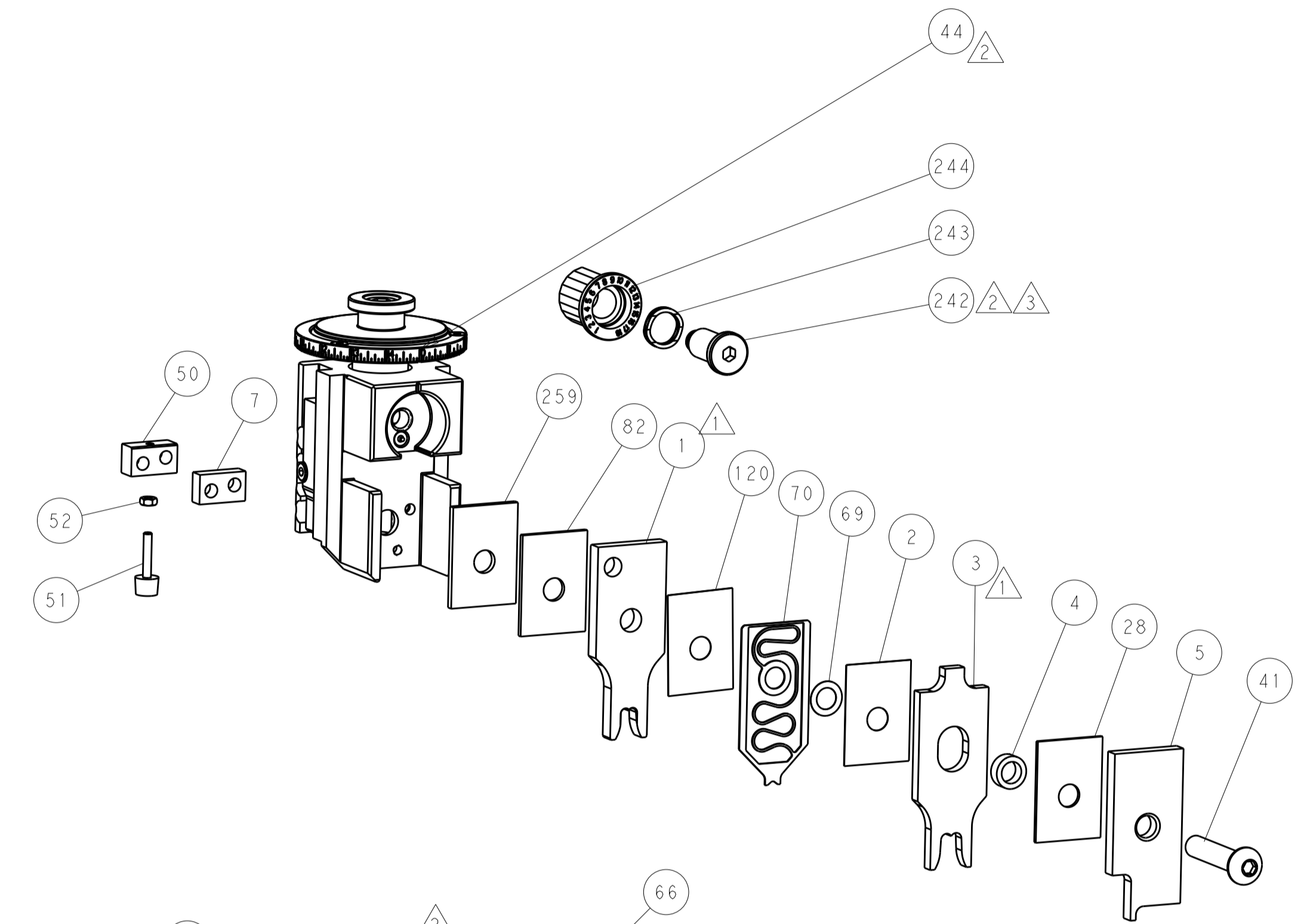


SEE DETAIL A

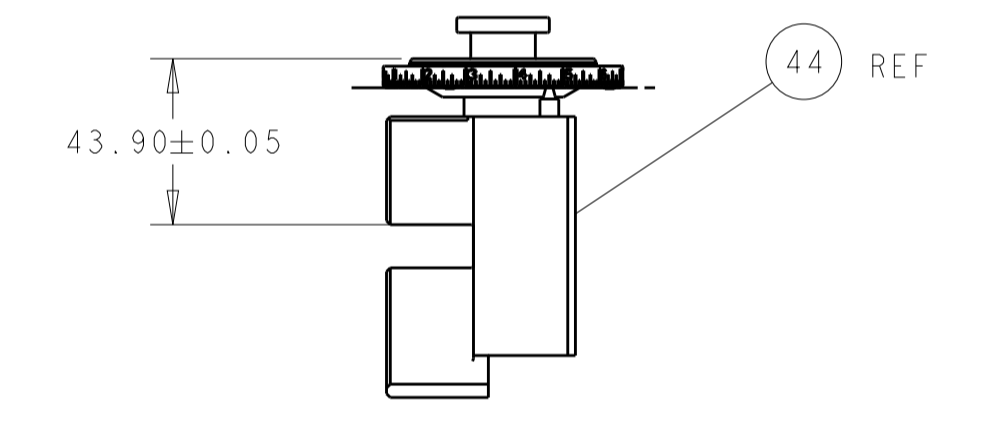
FEED SPRING SETTING POSITION
(SHOWN FROM REAR SIDE)



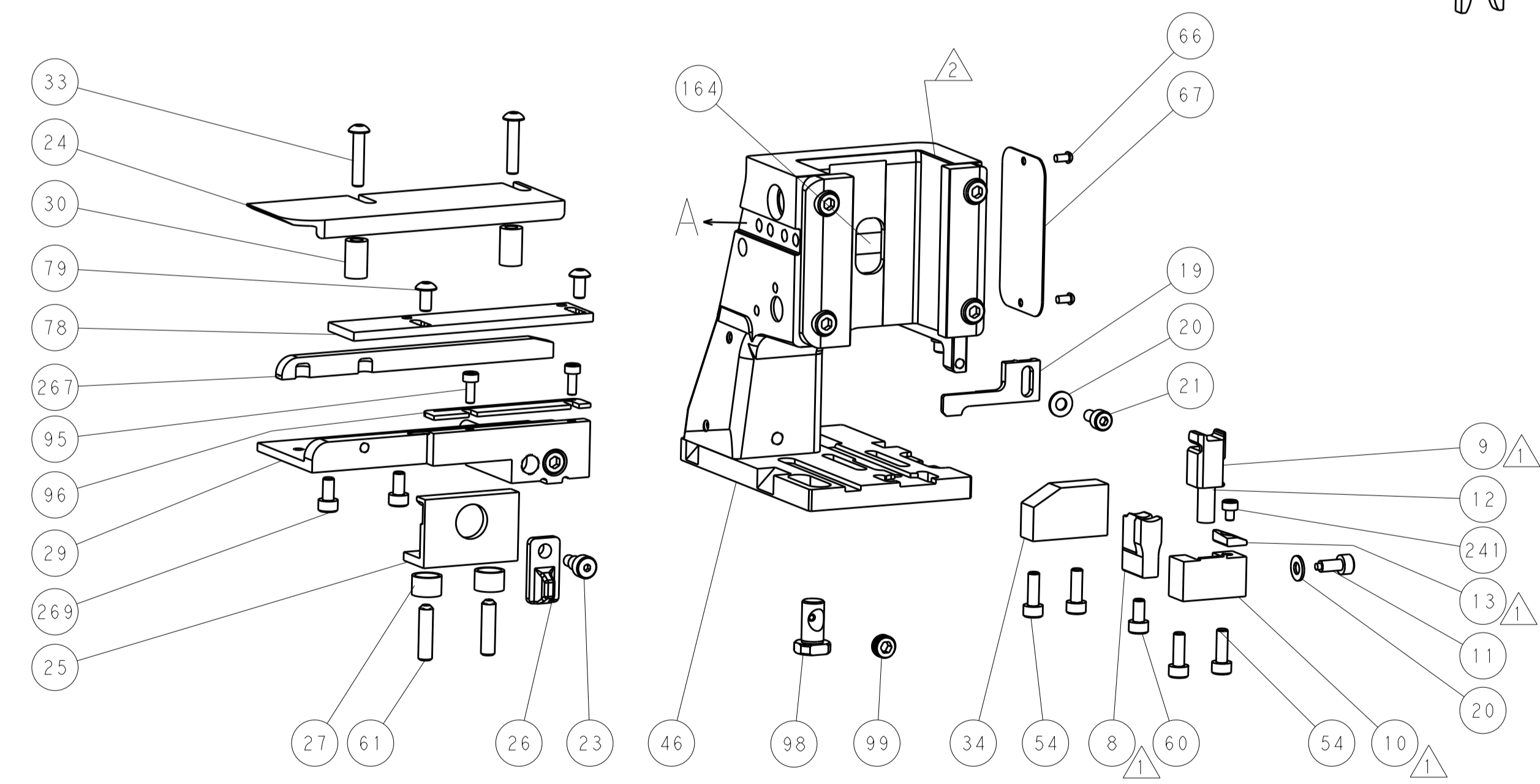
DETAIL A



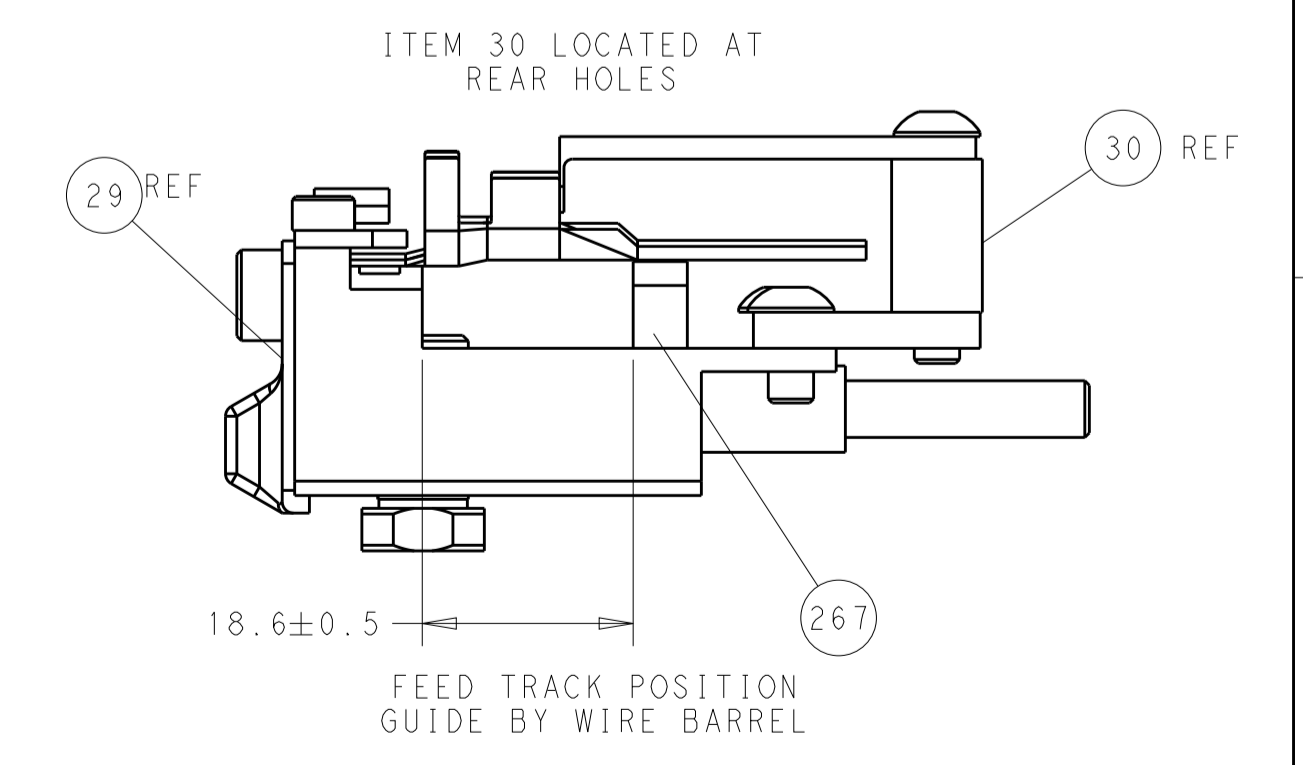
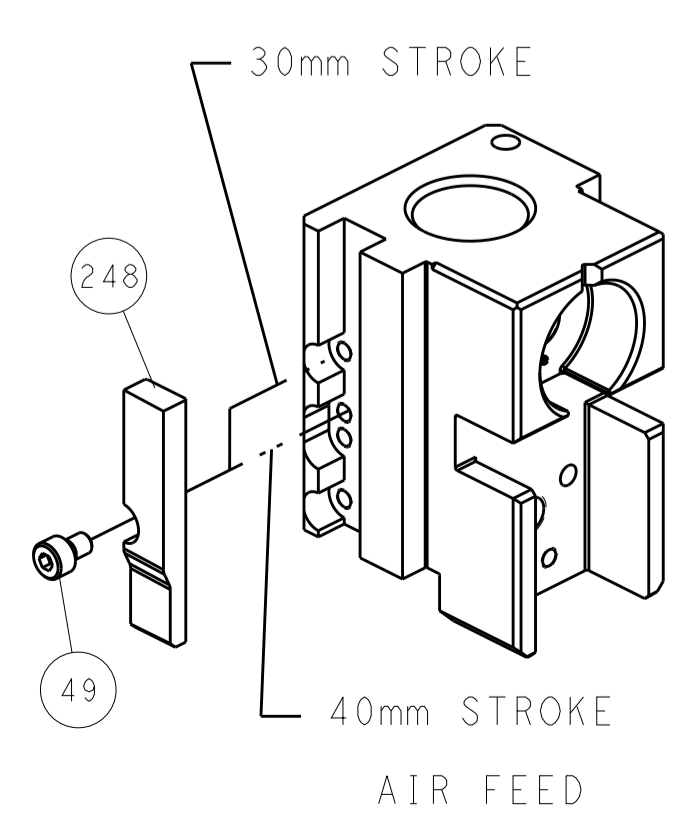
TERMINAL SUPPORT LOCATION



RAM SET-UP



CAM POSITION



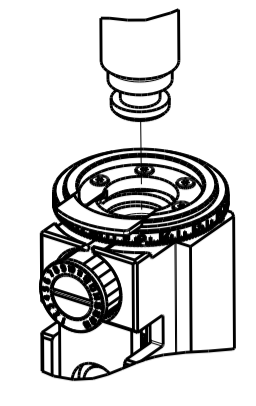
FEED TRACK POSITION
GUIDE BY WIRE BARREL

ATLANTIC VERSION
 Shown on sheets 1 of 4 & 2 of 4
 (Pacific version shown on sheets 3 of 4 & 4 of 4)

DIMENSIONS:		TOLERANCES UNLESS OTHERWISE SPECIFIED:		DWN	19NOV2012	TE Connectivity Harrisburg, PA 17105-3608
mm	0 PLC ±	1 PLC ±	2 PLC ±	CHK	19NOV2012	
	3 PLC ±	4 PLC ±	ANGLES ±	APVD	19NOV2012	NAME
MATERIAL	FINISH	WEIGHT	CUSTOMER ACCESSIBLE PRODUCTION DRAWING	SCALE	1:2	SHEET 2 OF 4
				RESTRICTED TO		

PART NUMBER	REVISION	DESCRIPTION	FEED TYPE
2-2151761-2	E	FINE CRIMP HEIGHT ADJUST	PNEUMATIC
7-2151761-7	A	CRIMP TOOLING KIT	-

PACIFIC VERSION TERMINATOR
 INTERFACE ADAPTER



APPLICATOR DATA		
CRIMP	SIZE	TYPE
WIRE	6.30 mm [.248]	F
INSUL	8.50 mm [.335]	F

APPLICATOR INSTRUCTIONS
 408-35042

TERMINAL DATA: YAZAKI TERMINAL YAZAKI CRIMP SPECIFICATION			
TERMINAL NAME: L TYPE CONNECTOR			
WIRE STRIP LENGTH	INSULATION DIAMETER RANGE	TERMINAL APPLICATION SPECIFICATION	WA1802
7.50-8.50 mm [.295-.335 IN]	∅4.90-5.80 mm [.193-.228 IN]	-	-
TERMINALS APPLIED			
TE TERMINAL	YAZAKI TERMINAL	TE TERMINAL	YAZAKI TERMINAL
1949899-1	7114-3250		

TERMINAL DATA: YAZAKI TERMINAL YAZAKI CRIMP SPECIFICATION			
TERMINAL NAME: 9.5MM RECEPTACLE			
WIRE STRIP LENGTH	INSULATION DIAMETER RANGE	TERMINAL APPLICATION SPECIFICATION	WA1802
7.50-8.50 mm [.295-.335 IN]	∅4.90-5.80 mm [.193-.228 IN]	-	-
TERMINALS APPLIED			
TE TERMINAL	YAZAKI TERMINAL	TE TERMINAL	YAZAKI TERMINAL
1572755-1	7116-3250		

WIRE SIZE	CRIMP HEIGHT mm [INCH]	CRIMP HEIGHT REFERENCE SETTING
8.00mm2	2.70+/-0.05 [.106+/- .002]	3.6
7.00mm2	2.75+/-0.05 [.108+/- .002]	2.8
6.00mm2	2.50+/-0.05 [.098+/- .002]	5.9
5.00mm2	2.40+/-0.05 [.094+/- .002]	6.8

WIRE SIZE	CRIMP HEIGHT mm [INCH]	CRIMP HEIGHT REFERENCE SETTING
8.00mm2	2.75+/-0.05 [.108+/- .002]	2.8
7.00mm2	2.75+/-0.05 [.108+/- .002]	2.8
6.00mm2	2.60+/-0.05 [.102+/- .002]	4.8
5.00mm2	2.40+/-0.05 [.094+/- .002]	6.8

- RECOMMENDED SPARE PARTS
- REFER TO SUPPLIED INSTRUCTION SHEET FOR CLEANING, LUBRICATION AND STORAGE OF APPLICATOR.
- APPLY PART NUMBER 2-23419-6 LOCTITE TO THREADS OF ITEM 242.
- CRIMP HEIGHT REFERENCE SETTING WAS THE SETTING USED WHEN THE APPLICATOR WAS QUALIFIED AT THE FACTORY. ADJUSTMENT MAY BE NECESSARY WHEN RUNNING APPLICATOR IN THE FIELD.
- TERMINAL PITCH NOT COMPATIBLE WITH MECHANICAL FEED.
- UNLESS SPECIFIED OTHERWISE TORQUE VALUES SHALL BE USED PER DOCUMENT, 101-35000.

***WARNING**
 ON INSTALLATION, SET WIRE DISC TO CRIMP HEIGHT REFERENCE SETTING FOR LARGEST WIRE SIZE. CRIMP HEIGHT REFERENCE SETTINGS GREATER THAN THE VALUE SHOWN MAY CAUSE DAMAGE TO THE CRIMP TOOLING, REFER TO THE INSTRUCTION SHEET FOR PROPER SETUP AND ADJUSTMENTS.

PACIFIC VERSION
 Shown on sheets 3 of 4 & 4 of 4
 (Atlantic version shown on sheets 1 of 4 & 2 of 4)

LOC	DIST	REV	DATE	BY	APPD
A	66				

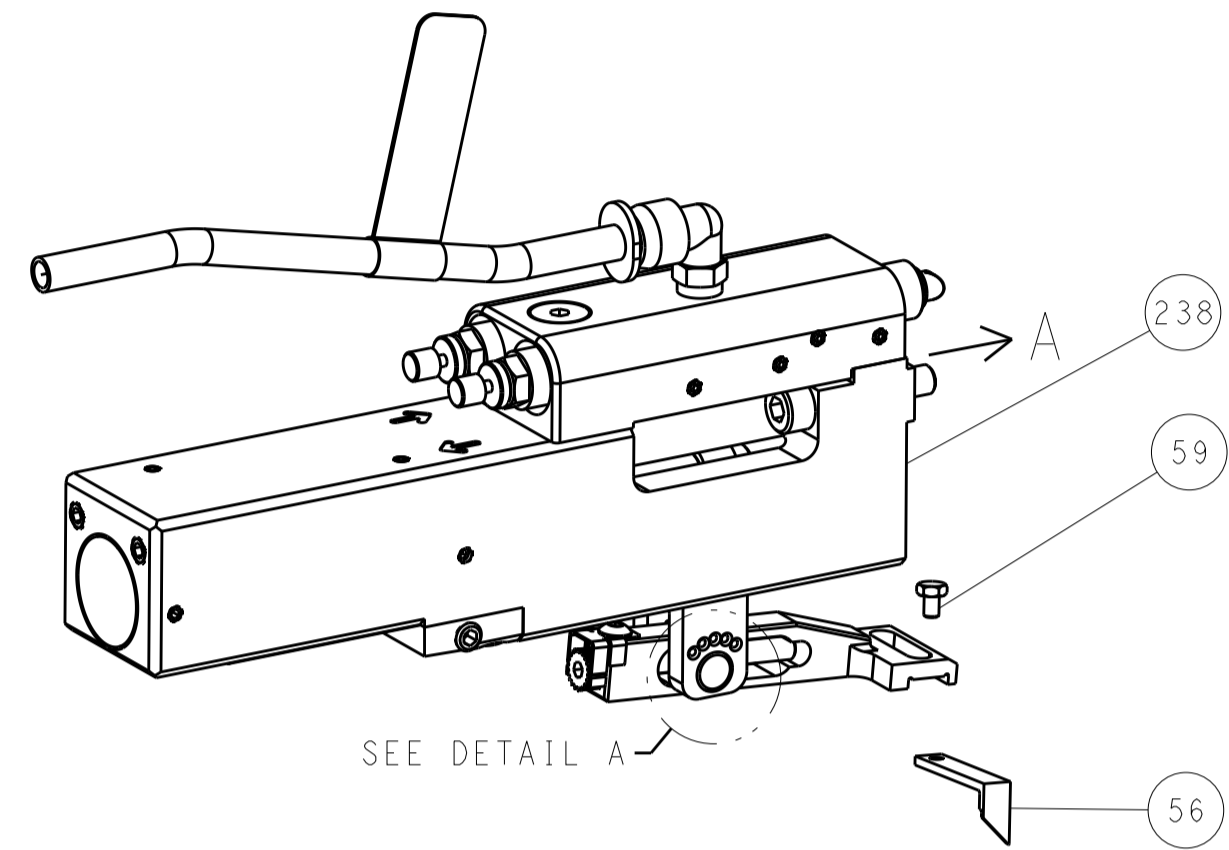
REV	DATE	DESCRIPTION	ITEM NO
-	2	2168083-2 SCR, SKT HD CAP, RoHS, M4 X 8.0	269
-	1	1633782-2 FENCE	267
-	1	1803078-2 SPACER, PRECISION	259
-	1	2119082-7 CAM, SNAIL, INSULATION ADJUSTMENT	244
-	1	2079764-1 WASHER, WAVE SPRING, CREST-TO-CREST	243
-	1	2119083-1 RETAINER, INSULATION DIAL	242
-	1	7-18023-7 SCR, SKT HD CAP M3 X 4.0	241
-	1	2844940-2 AIR FEED MODULE	238
-	REF	994970-2 COUNTER, MAGNETIC	164
-	1	2119641-2 FEED CAM, AIR FEED	151
-	1	2168083-8 SCR, SKT HD CAP, RoHS, M4 X 16	144
-	4	2168083-9 SCR, SKT HD CAP, RoHS, M4 X 20	143
-	1	1-1803583-0 APPLICATOR BASIC ASSEMBLY, SF	141
-	1	1803516-2 RAM ASSEMBLY, SF PACIFIC	140
-	1	455888-1 SPACER, CRIMPER	120
-	1	2844908-1 SCREW, LOCKING	99
-	1	2844907-1 POST, LOCKING	98
-	1	1-690438-0 FRONT STRIP GUIDE	96
-	2	2168083-1 SCR, SKT HD CAP, RoHS, M3 X 8.0	95
-	1	1-455888-5 SPACER, CRIMPER	82
-	2	2079383-4 SCR, BHSC, RoHS (M4 X 8)	79
-	1	1803096-1 EXTENSION PLATE	78
-	1	1803607-3 DOCUMENTATION PACKAGE	71
-	1	2119791-5 DEPRESSOR, WIRE	70
-	1	2119943-1 WASHER, SPACER	69
-	1	2119740-1 TAG, IDENTIFICATION	67
-	2	2168078-1 SCREW, DRIVE, RH, RoHS, 2 x .188	66
-	2	2-18032-5 SCR, SET, FLT PNT, M5 X 20.0	61
-	1	5-18022-5 SCR, HEX HD CAP, M4 X 6.0	59
-	1	1338683-8 FEED PAWL	56
-	2	2168083-8 SCR, SKT HD CAP, RoHS, M4 X 16	53
-	1	5018030-1 NUT, HEX, REG, RoHS, M3	52
-	1	811242-5 BUMPER, HOLD DOWN	51
-	1	690753-2 SPACER, TONKER	50
-	1	18023-9 SCR, SKT HD CAP M4 X 6.0	49
-	1	1803602-2 SCR, BHSC, RoHS (M8 X 40)	41
-	1	1-1752356-8 SUPPORT, TERMINAL	34
-	2	2079383-5 SCR, BHSC, RoHS (M4 X 20)	33
-	2	2-2844962-3 SPACER, CYLINDRICAL, STRIP GUIDE	30
-	1	2844992-3 ASSEMBLY, STRIP GUIDE	29
-	1	1-455888-0 SPACER, CRIMPER	28
-	2	22283-1 SPRING, COMPRESSION	27
-	1	356835-1 LEVER, DRAG RELEASE	26
-	1	240792-1 DRAG, TERMINAL	25
-	1	1320928-6 STRIP GUIDE	24
-	1	980371-4 SCR, SKT HD SHLDR 5.0 DIA X 6.0	23
-	1	2168083-2 SCR, SKT HD CAP, RoHS, M4 X 8.0	21
-	2	1-18028-2 WASHER, FLAT, REG M4	20
-	1	2119533-1 STRIPPER, SIDE FEED	19
-	1	2119806-1 INSERT, SHEAR	13
-	1	3-22280-3 SPRING, COMPRESSION	12
-	1	1-356885-4 STOP, SHEAR	11
-	1	2119805-1 SHEAR HOLDER, FRONT	10
-	1	454276-5 FLOATING SHEAR, FRONT	9
-	1	1-1633930-2 ANVIL, COMBINATION	8
-	1	1-240641-4 SPACER	7
-	-	-	6
-	1	1-2119757-0 DEPRESSOR, SHEAR	5
-	1	238011-3 BLOCK, CRIMPER SPACER	4
-	1	6-2119582-3 CRIMPER, INSULATION F PREMIUM	3
-	1	455888-1 SPACER, CRIMPER	2
-	1	4-1633664-6 CRIMPER, WIRE	1

DIMENSIONS:	TOLERANCES UNLESS OTHERWISE SPECIFIED:	DATE	BY	APPD
mm	0 PLC ± 1 PLC ± 2 PLC ± 3 PLC ± 4 PLC ± ANGLES ±	19NOV2012	H. HUANG	S. XI
MATERIAL:	FINISH:	PRODUCT SPEC	APPLICATION SPEC	SIZE
-	-	-	-	A1 00779
CUSTOMER ACCESSIBLE PRODUCTION DRAWING		SCALE	SHEET	REV
-		1:2	3 OF 4	E

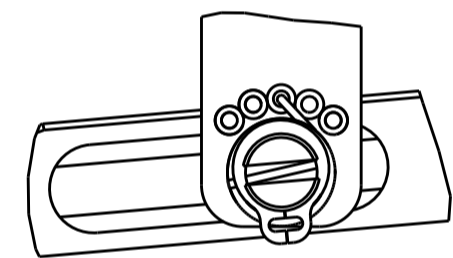
LOC		DIST		REVISIONS			
A	66	P	LTM	DESCRIPTION	DATE	OWN	APVD
-	-	-	-	SEE SHEET 1	-	-	-

FEED TYPE

PNEUMATIC

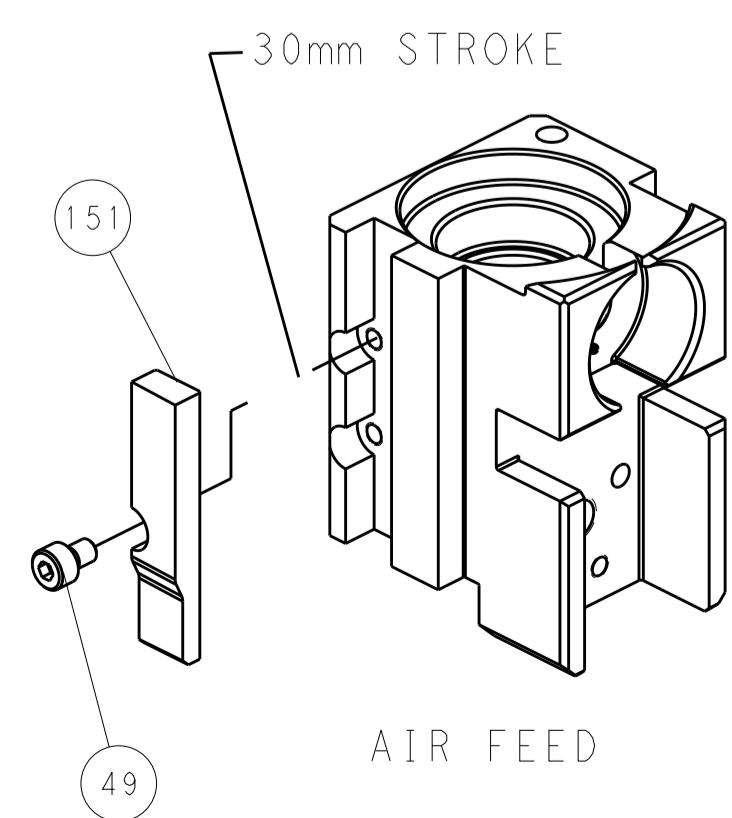


FEED SPRING SETTING POSITION (SHOWN FROM REAR SIDE)

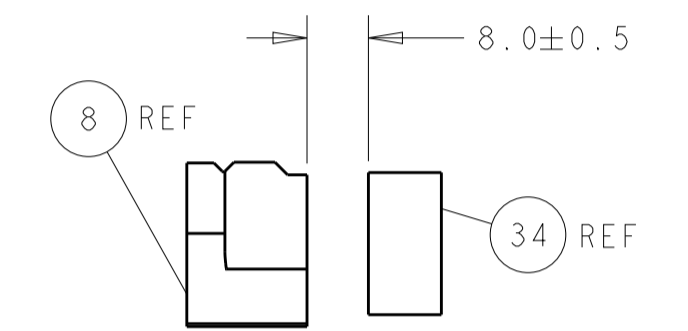
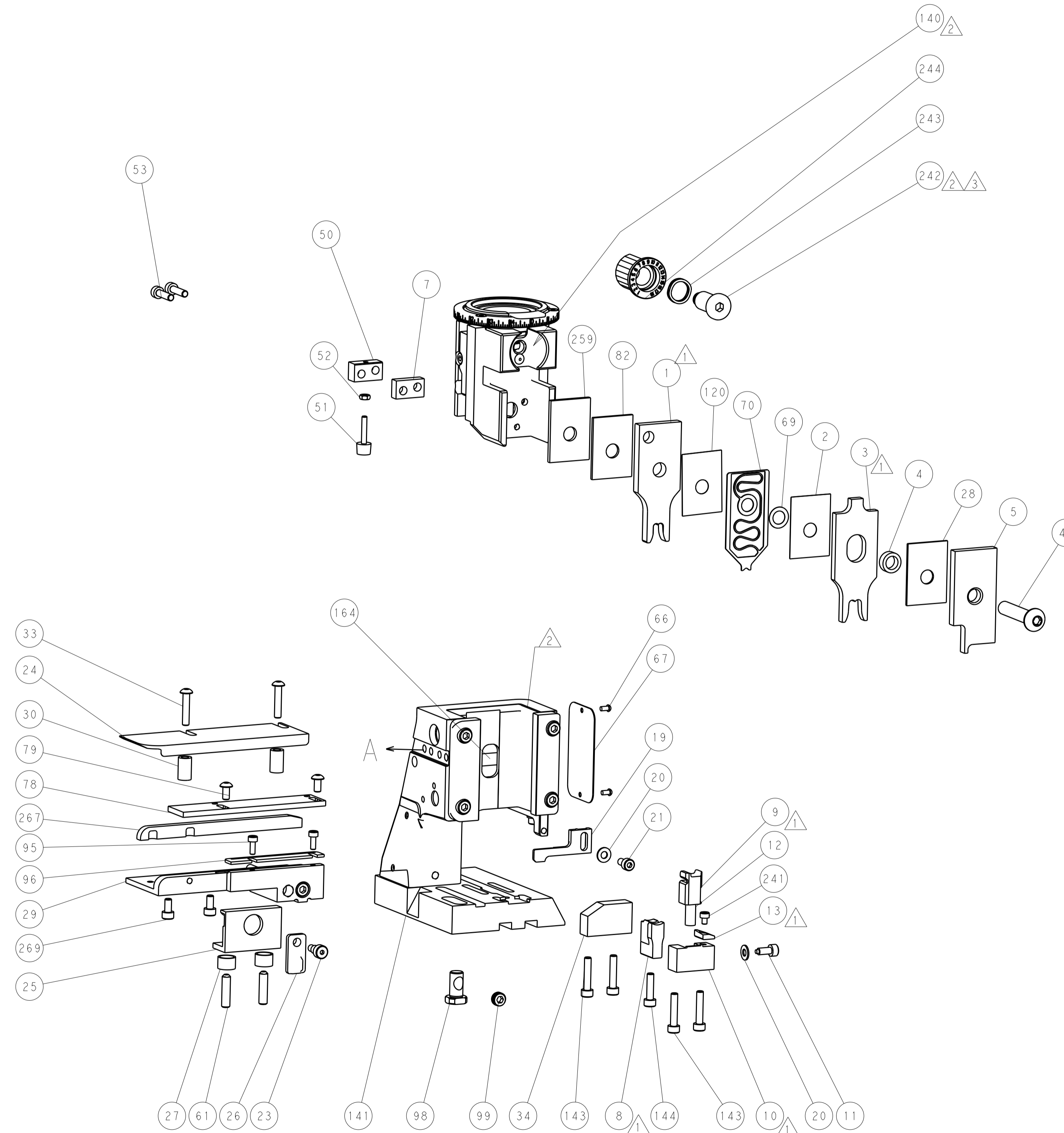


DETAIL A

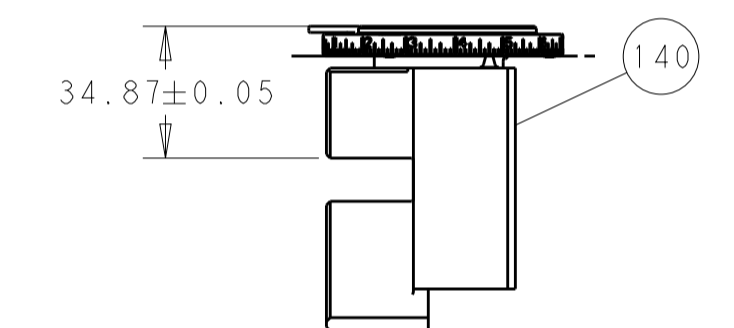
CAM POSITION



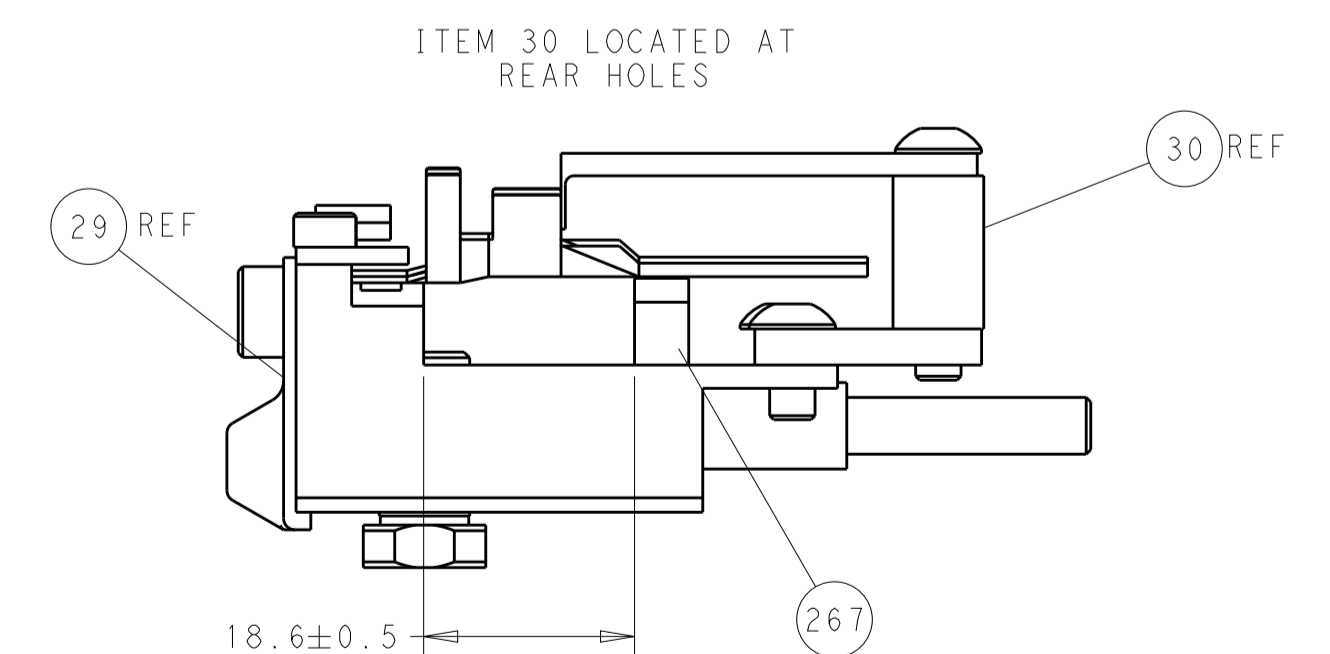
AIR FEED



TERMINAL SUPPORT LOCATION



RAM SET-UP



FEED TRACK POSITION GUIDE BY WIRE BARREL

PACIFIC VERSION
 Shown on sheets 3 of 4 & 4 of 4
 (Atlantic version shown on sheets 1 of 4 & 2 of 4)

DIMENSIONS:		TOLERANCES UNLESS OTHERWISE SPECIFIED:		DWN R. HUANG 19NOV2012		TE Connectivity Harrisburg, PA 17105-3608	
mm	0 PLC	±		CHK S. XI 19NOV2012	NAME	Ocean Side Feed Applicator	
	1 PLC	±		APVD S. XI 19NOV2012	PRODUCT SPEC	RESTRICTED TO	
	2 PLC	±			APPLICATION SPEC	SIZE	CAGE CODE
	3 PLC	±				00779	2151761
	4 PLC	±				SCALE 1:2 SHEET 4 OF 4 REV E	
	ANGLES	±			WEIGHT	CUSTOMER ACCESSIBLE PRODUCTION DRAWING	