

PAIRS PER COLUMN -6
 No. OF COLUMNS -04
 -06
 -08
 PLATING
 -S: 30µ" SELECTIVE GOLD IN CONTACT AREA, MATTE TIN ON TAIL
 IMPEDANCE
 -100: 100 Ω
 -085: 85 Ω
 WAFERS (SEE NOTE 3)
 -LC: STANDARD
 -HS: HIGH SPEED
 ORIENTATION
 -RA: RIGHT ANGLE

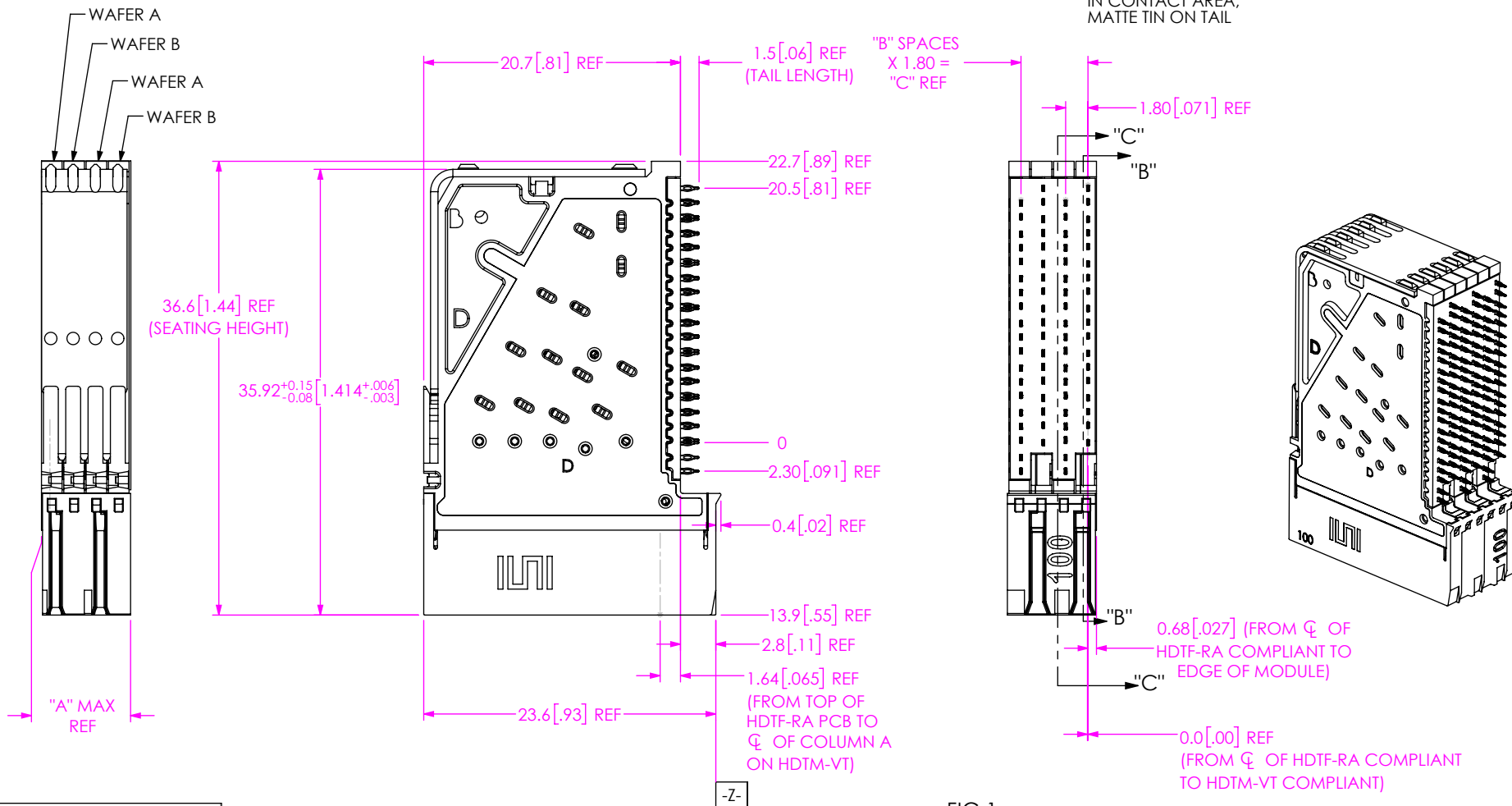
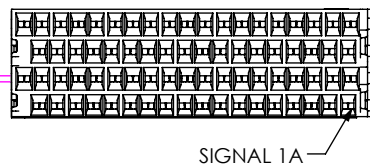


FIG 1
(HDTF-6-04-X-RA-XX-XXX SHOWN)

TABLE 1

No. OF COLUMNS	"A"	"B"	"C"
-04	7.2 [0.28]	3	5.40 [0.213]
-06	10.8 [0.42]	5	9.00 [0.354]
-08	14.4 [0.57]	7	12.60 [0.496]

0.40 [0.016] REF (TYP)



- NOTES:
 1. CONTACT SAMTEC FOR CONNECTOR PRESS FIT INSTRUCTIONS AND FIXTURES.
 2. TRAYS TO BE STANDARD PACKAGING.
 3. -LC IS OPEN PIN FIELD, -HS IS FOR DIFFERENTIAL PAIRS. SEE FOOTPRINT DRAWING FOR DETAILS.
 4. ORDERS WILL BE PACKAGED ACCORDING TO THE SAMTEC PACKAGING EFFICIENCY STANDARDS (SPES) FOUND ON WWW.SAMTEC.COM.

UNLESS OTHERWISE SPECIFIED, DIMENSIONS ARE IN MILLIMETERS.
 TOLERANCES ARE:
 DECIMALS ANGLES
 X.X: ±0.25 [0.010]
 X.XX: ±0.13 [0.005]
 X.XXX: ±

PROPRIETARY NOTE
 * THIS DOCUMENT CONTAINS CONFIDENTIAL AND PROPRIETARY INFORMATION AND ALL DESIGN, MANUFACTURING, REPRODUCTION, USE, PATENT RIGHTS AND SALES RIGHTS ARE EXPRESSLY RESERVED BY SAMTEC, INC. THIS DOCUMENT SHALL NOT BE DISCLOSED, IN WHOLE OR PART, TO ANY UNAUTHORIZED PERSON OR ENTITY NOR REPRODUCED, TRANSFERRED OR INCORPORATED IN ANY OTHER PROJECT IN ANY MANNER WITHOUT THE EXPRESS WRITTEN CONSENT OF SAMTEC, INC.

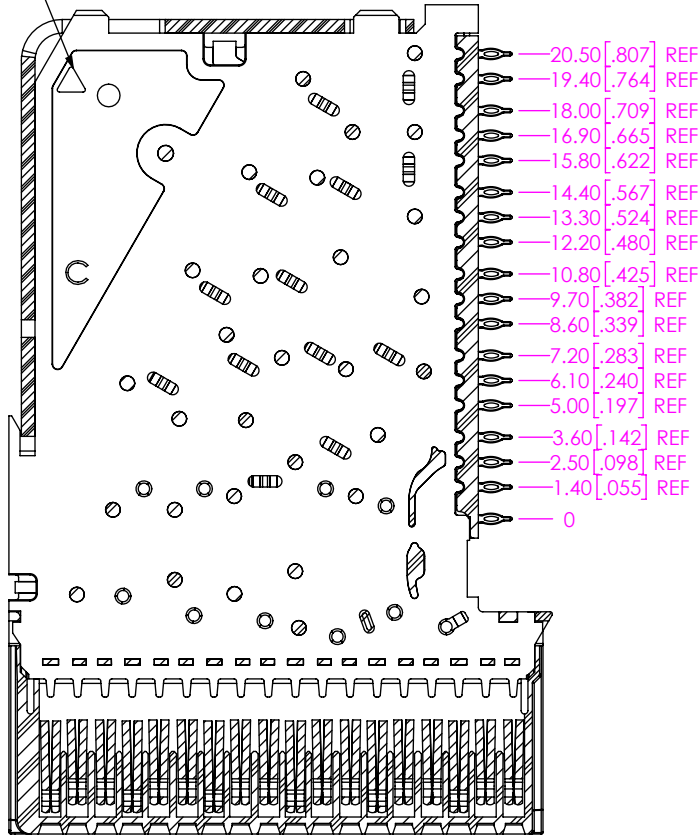
MATERIAL: DO NOT SCALE DRAWING SHEET SCALE: 2:1
 INSULATORS: LCP
 CONTACTS: CU ALLOY
 ALIGNMENT BODY: LCP



520 PARK EAST BLVD, NEW ALBANY, IN 47150
 PHONE: 812-944-6733 FAX: 812-948-5047
 e-Mail: info@SAMTEC.com code 53322

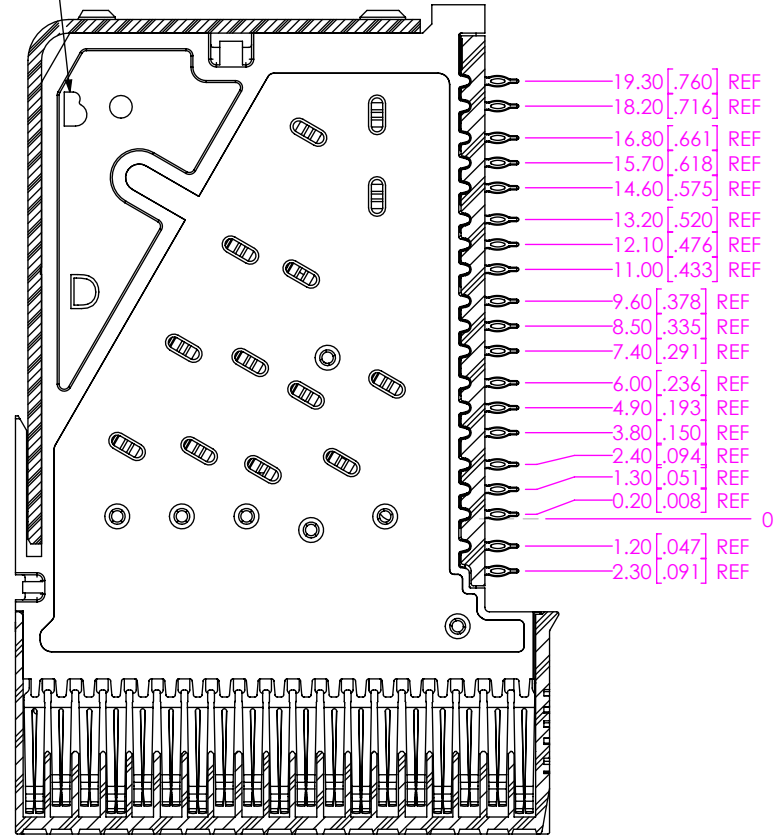
DESCRIPTION:
 XCode? 6 PAIR HD RA ASSEMBLY
 DWG. NO.
HDTF-6-XX-X-RA-XX-XXX
 BY: KNOWLDEN 01/12/2017 SHEET 1 OF 2

A WAFER SYMBOL



SECTION "B"-"B"
 SCALE 3:1

B WAFER SYMBOL



SECTION "C"-"C"
 SCALE 3:1

PROPRIETARY NOTE
 THIS DOCUMENT CONTAINS CONFIDENTIAL AND PROPRIETARY INFORMATION AND ALL DESIGN, MANUFACTURING, REPRODUCTION, USE, PATENT RIGHTS AND SALES RIGHTS ARE EXPRESSLY RESERVED BY SAMTEC, INC. THIS DOCUMENT SHALL NOT BE DISCLOSED, IN WHOLE OR PART, TO ANY UNAUTHORIZED PERSON OR ENTITY NOR REPRODUCED, TRANSFERRED OR INCORPORATED IN ANY OTHER PROJECT IN ANY MANNER WITHOUT THE EXPRESS WRITTEN CONSENT OF SAMTEC, INC.



520 PARK EAST BLVD, NEW ALBANY, IN 47150
 PHONE: 812-944-6733 FAX: 812-948-5047
 e-Mail info@SAMTEC.com code 55322

DO NOT SCALE DRAWING

SHEET SCALE: 2:1

DESCRIPTION:
 XCede? 6 PAIR HD RA ASSEMBLY

DWG. NO.
 HDTF-6-XX-X-RA-XX-XXX

BY: KNOWLDEN 01/12/2017 SHEET 2 OF 2