

This document is the property of Amphenol Corporation and is delivered on the express condition that it is not to be disclosed, reproduced or used, in whole or in part, for manufacture or sale by anyone other than Amphenol Corporation without its prior consent, & that no right is granted to disclose or to use any information in this document.

CUSTOMER DRAWING

REVISIONS

SYM	ECN	DESCRIPTION	DATE	APPROVED
11	CD2021	UPDATE 3D VIEW ON PAGE 3	Dec.04,2020	YH

PN SYSTEM
CEDX1XXX11XXXXX

- POWER PIN
- 0 NO POWER WAFER
 - 1 1 POWER WAFER
 - 2 2 POWER WAFER
 -
 - 9 9 POWER WAFER
 - A 10 POWER WAFER
 - B 11 POWER WAFER
 -

- PLATING SPEC
- 1 0.76 UM Au
 - 2 0.38 UM Au
 - 3 GOLD FLASH
 - 4 GXT

PIN COUNT
(SEE DIM FORM)

- SINGLE END WAFER
- 00 0 WAFER
 - 01 1 WAFER
 -
 - 99 99 WAFER

- CARD THICKNESS
- 1 1.60MM (1.57MM)
 - 2 2.36MM

PACKING SPEC

- 1 HARD TRAY (320X230) WITH MYLAR
- 2 HARD TRAY (320X136) WITH MYLAR
- 3 TUBE WITH MYLAR
- 4 TAPE & REEL WITH MYLAR (SUPPORT PIN COUNT LESS THAN 284)
- 5 HARD TRAY (320X230) WITHOUT MYLAR
- 6 HARD TRAY (320X136) WITHOUT MYLAR
- 7 TAPE & REEL WITHOUT MYLAR (SUPPORT PIN COUNT LESS THAN 284)

DIM FORM

PIN COUNT	76	112	148
A	16.6	23.8	31.0
B	20.4	27.6	34.8
C	18.4	25.6	32.8
D	16.45	23.65	30.85

CARD THICKNESS	1.60	2.36
T	1.80	2.60

NOTE:

- MATERIAL:
HOUSING: HIGH TEMPERATURE THERMOPLASTIC BLACK UL94-V0
CONTACT: COPPER ALLOY
BOARD LOCK: COPPER ALLOY
- PLATING:
CONTACT: MATING AREA: SEE PART NUMBER SYSTEM OVER 1.27-2.54 UM NICKEL UNDERPLATED
SOLDER AREA: 1.27 MIN TIN OVER 1.27-2.54 UM NICKEL UNDERPLATED
BOARD LOCK: 1.27 MIN TIN OVER 1.27-2.54 UM NICKEL UNDERPLATED
- ELECTRICAL PERFORMANCE:
RATED CURRENT FOR SIGNAL PIN: PLEASE REFER APPLICATION SPEC
- MATERIAL SHOULD BE FULFILLED AMPHENOL SPEC # SSN002
- THE CRITICAL DIMENSIONS OF MATING CARD AND FOOTPRINT LAYOUT



UNLESS OTHERWISE SPECIFIED TOLERANCES

	U.S.	METRIC
.X	+/-	0.50
.XX	+/-	0.30
.XXX	+/-	0.15
FRACTIONS	+/-	
ANGLES	+/-	2°

FOR MATERIALS AND FINISHES SEE NOTES

REMOVE SHARP EDGES

DIMENSIONS

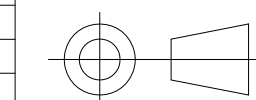
U.S.	INCHES
(METRIC)	(mm)

APPROVAL	DATE
DRAWN	Mar.13,2020
CHECKED	
APPROVED	

DRAWING FILE :

INTERNAL\DRAWING\CE\C CEDX1XXX11XXXXX

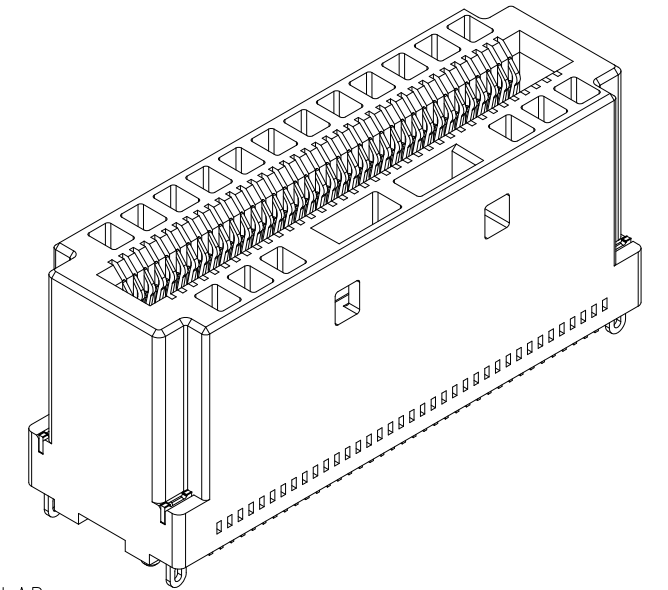
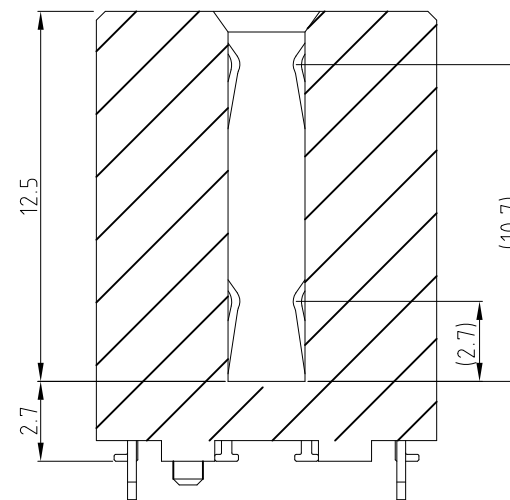
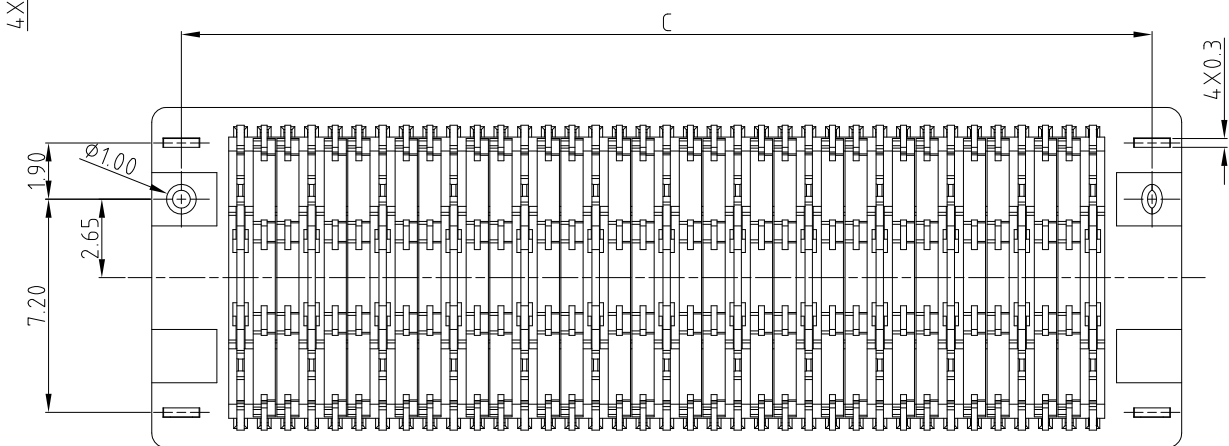
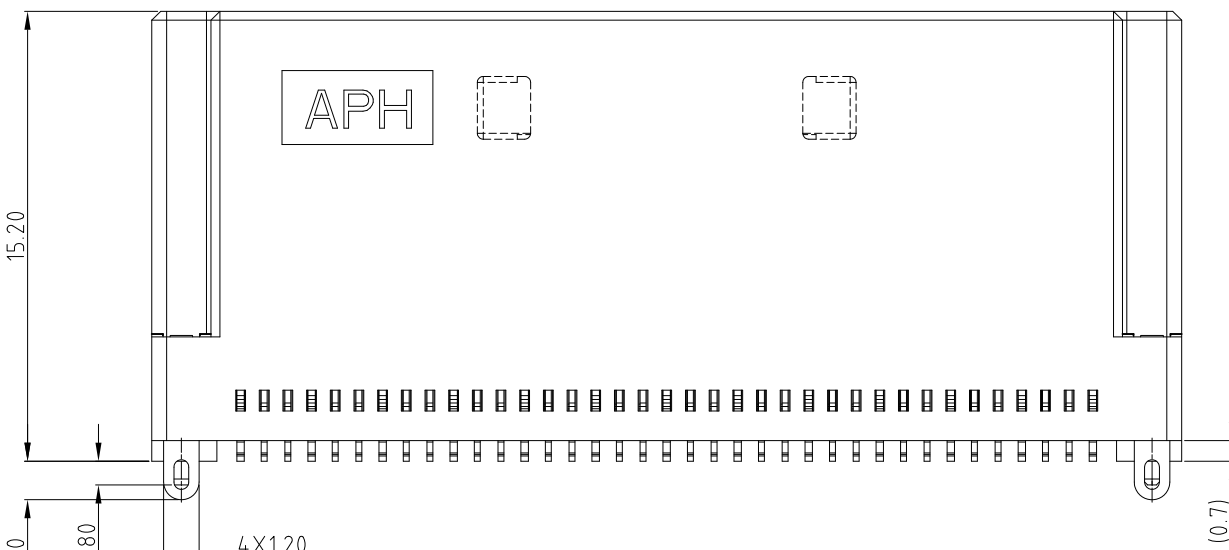
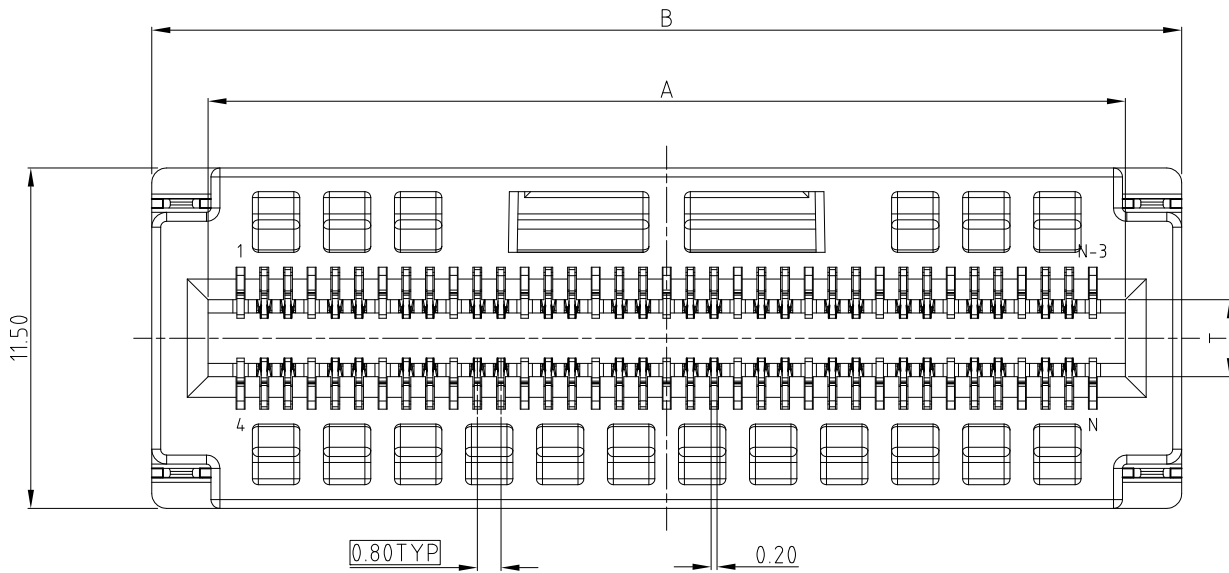
ANGLE OF PROJECTION



Amphenol

TITLE
COOL EDGE DOUBLE DENSITY CONNECTOR
0.80MM PITCH,VERTICAL

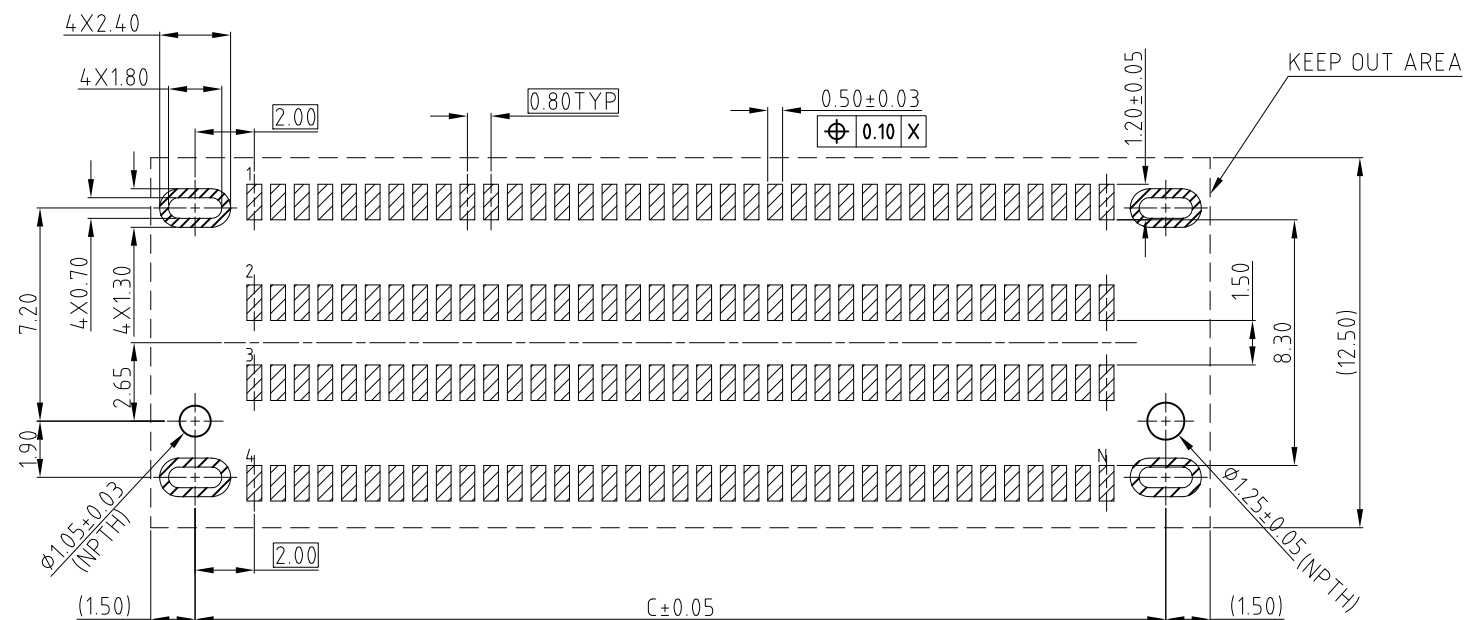
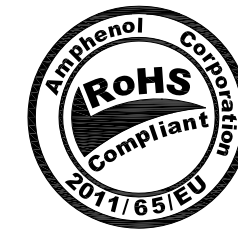
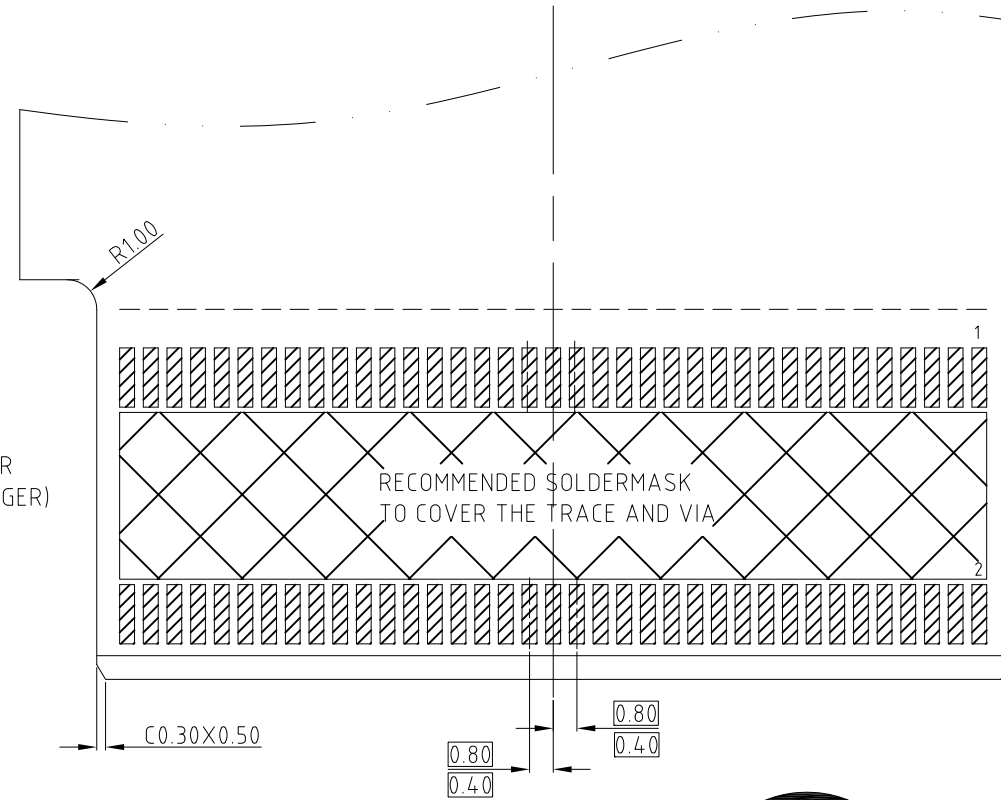
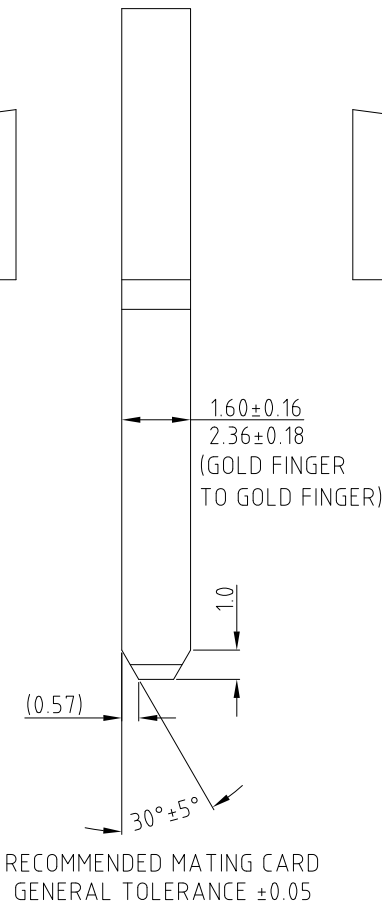
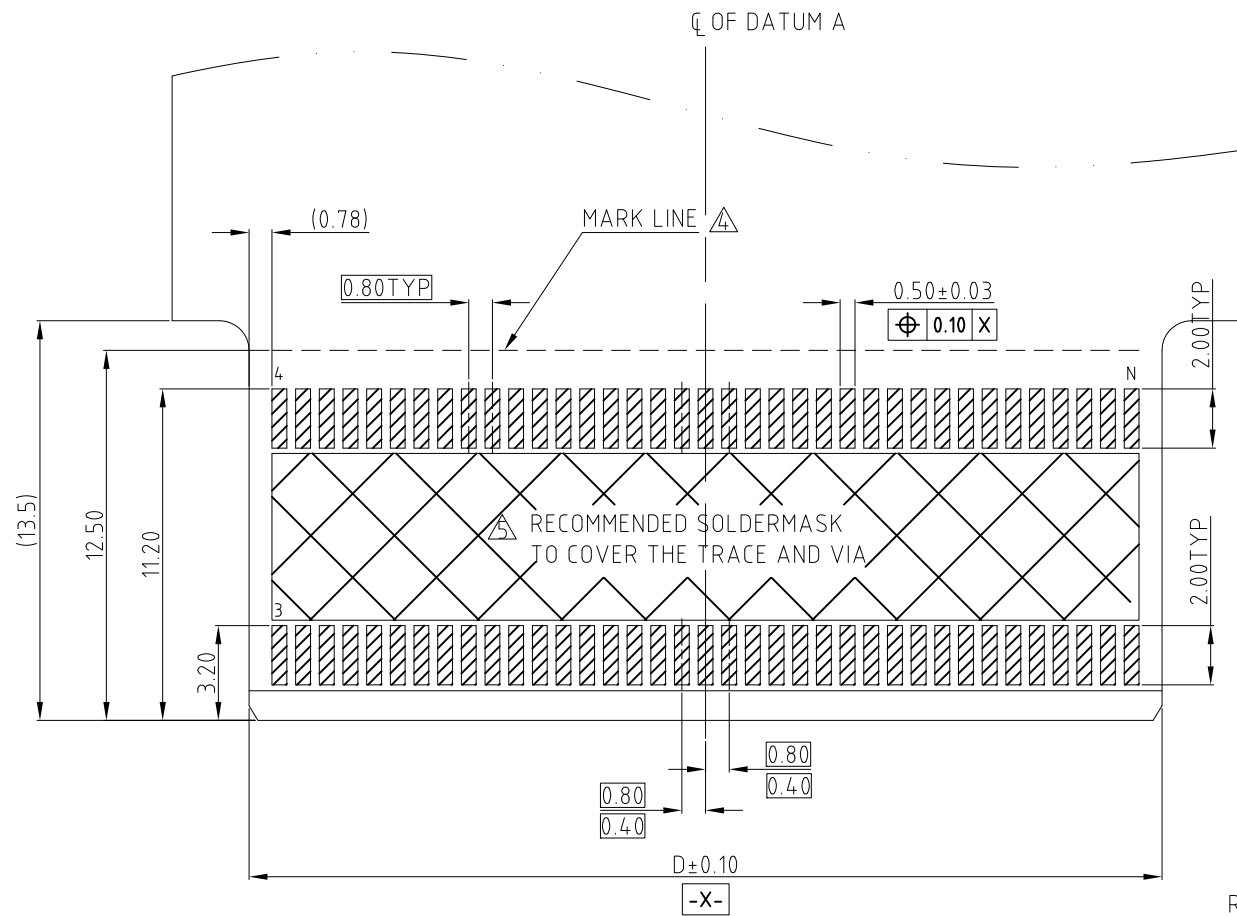
SIZE	DRAWING NO.	REV.
A3	C CEDX1XXX11XXXXX	11
SCALE	NONE	SHEET 1 OF 5



This document is the property of Amphenol Corporation and is delivered on the express condition that it is not to be disclosed, reproduced or used, in whole or in part, for manufacture or sale by anyone other than Amphenol Corporation without its prior consent, & that no right is granted to disclose or to use any information in this document.

CUSTOMER DRAWING

REVISIONS				
SYM	ECN	DESCRIPTION	DATE	APPROVED
		SEE SHEET 1		



SOLDERABLE FINISH PLATING ON ALL PADS
 RECOMMENDED CONNECTOR FOOTPRINT LAYOUT COMPONENT SIDE SHOWN
 GENERAL TOLERANCE ± 0.05

PIN DEFINE

PIN	PIN 1	PIN 5	PIN 9	PIN 13	PIN 17	PIN 21	PIN 25	PIN 121	PIN 125	PIN 129	PIN 133	PIN 137	PIN 141	PIN 145
UPPER ROW	G	S	S	G	S	S	G	G	S	S	G	S	S	G
LOWER ROW	G	S	S	G	S	S	G	G	S	S	G	S	S	G
LOWER ROW	G	S	S	G	S	S	G	G	S	S	G	S	S	G
UPPER ROW	G	S	S	G	S	S	G	G	S	S	G	S	S	G
PIN	PIN 4	PIN 8	PIN 12	PIN 16	PIN 20	PIN 24	PIN 28	PIN 124	PIN 128	PIN 132	PIN 136	PIN 140	PIN 144	PIN 148

NOTE:

1. ALL GND PINS WERE LINKED TOGETHER INSIDE OF CONNECTOR FOR FULL HIGH SPEED APPLICATION
 2. OR 4 GND PINS (FROM A WAFER) LINKED FOR LOW SPEED
 3. FOR POWER APPLICATION, PLEASE REFER THE APPLICATION SPEC.
- ▲ THIS MARK LINE TO SHOWN THE AIC INSERT COMPLETELY WHEN IT CLOSED CONNECTOR SURFACE
 ▲ RECOMMENDED USING SOLDERMASK TO COVER THE TRACE AND VIA

UNLESS OTHERWISE SPECIFIED TOLERANCES	APPROVAL		DATE
	U.S.	METRIC	Mar.13,2020
.X +/-	0.50		
.XX +/-	0.30		
.XXX +/-	0.15		
FRACTIONS +/-			
ANGLES +/-	2°		
FOR MATERIALS AND FINISHES SEE NOTES	DRAWING FILE :		
REMOVE SHARP EDGES	INTERNAL\DRAWING\CE\C CEDX1XXX11XXXX		
DIMENSIONS	ANGLE OF PROJECTION		
— U.S. —	INCHES		
(METRIC)	(mm)		

Amphenol		
TITLE COOL EDGE DOUBLE DENSITY CONNECTOR 0.80MM PITCH, VERTICAL		
SIZE	DRAWING NO.	REV.
A3	C CEDX1XXX11XXXX	11
SCALE	NONE	SHEET 2 OF 5

This document is the property of Amphenol Corporation and is delivered on the express condition that it is not to be disclosed, reproduced or used, in whole or in part, for manufacture or sale by anyone other than Amphenol Corporation without its prior consent, & that no right is granted to disclose or to use any information in this document.

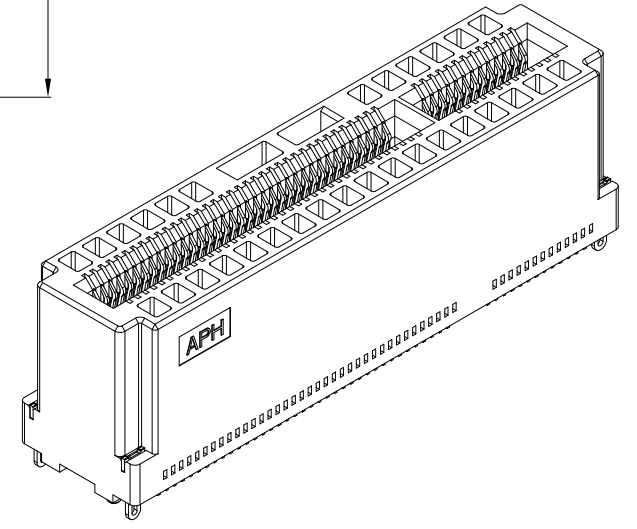
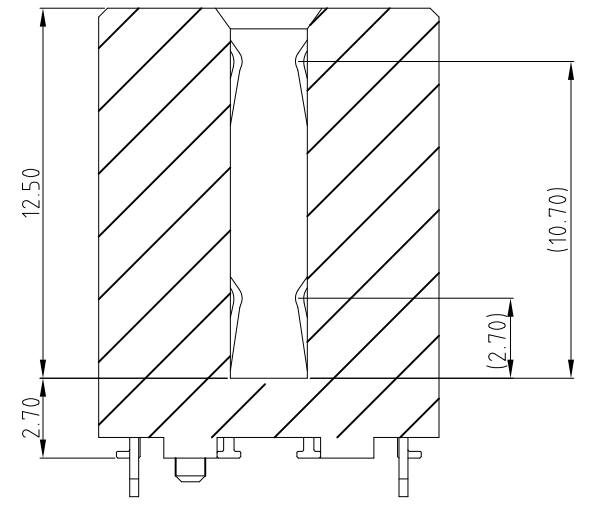
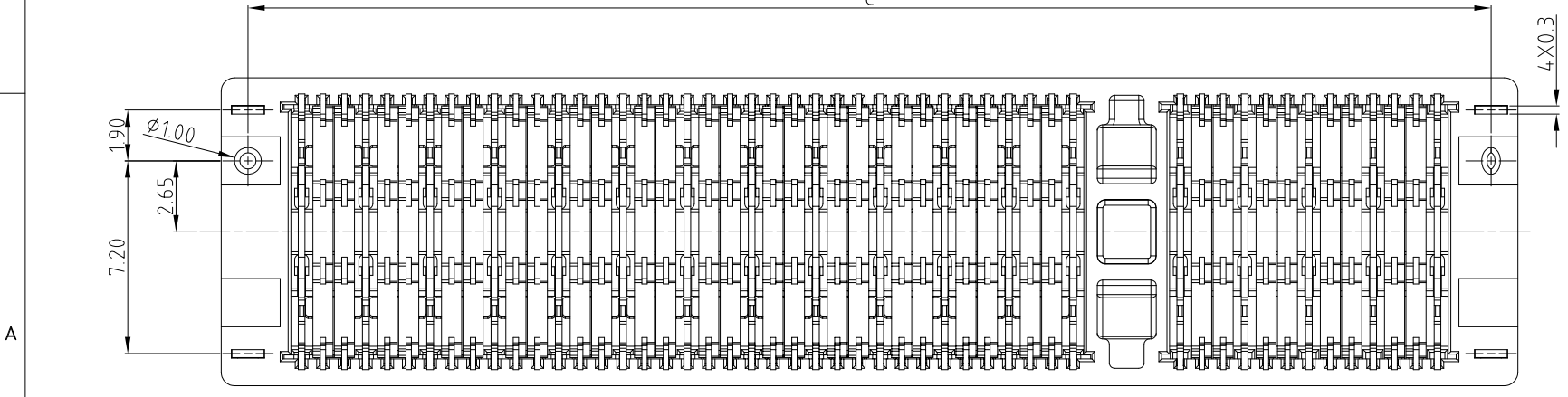
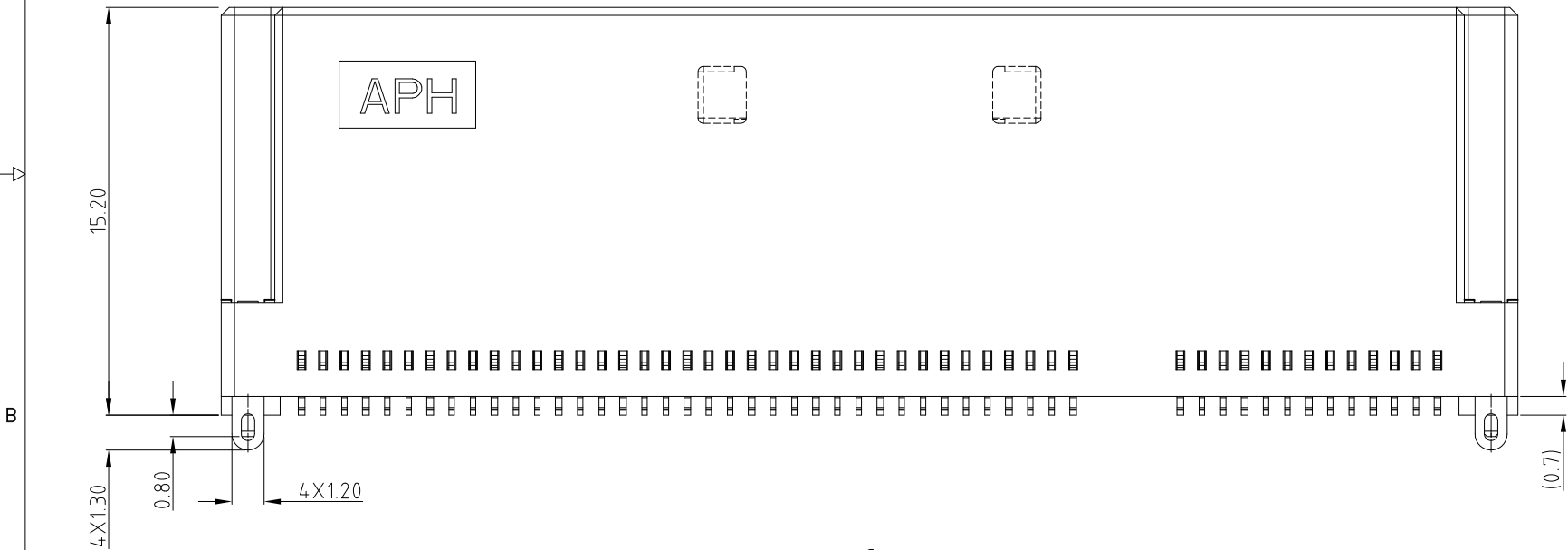
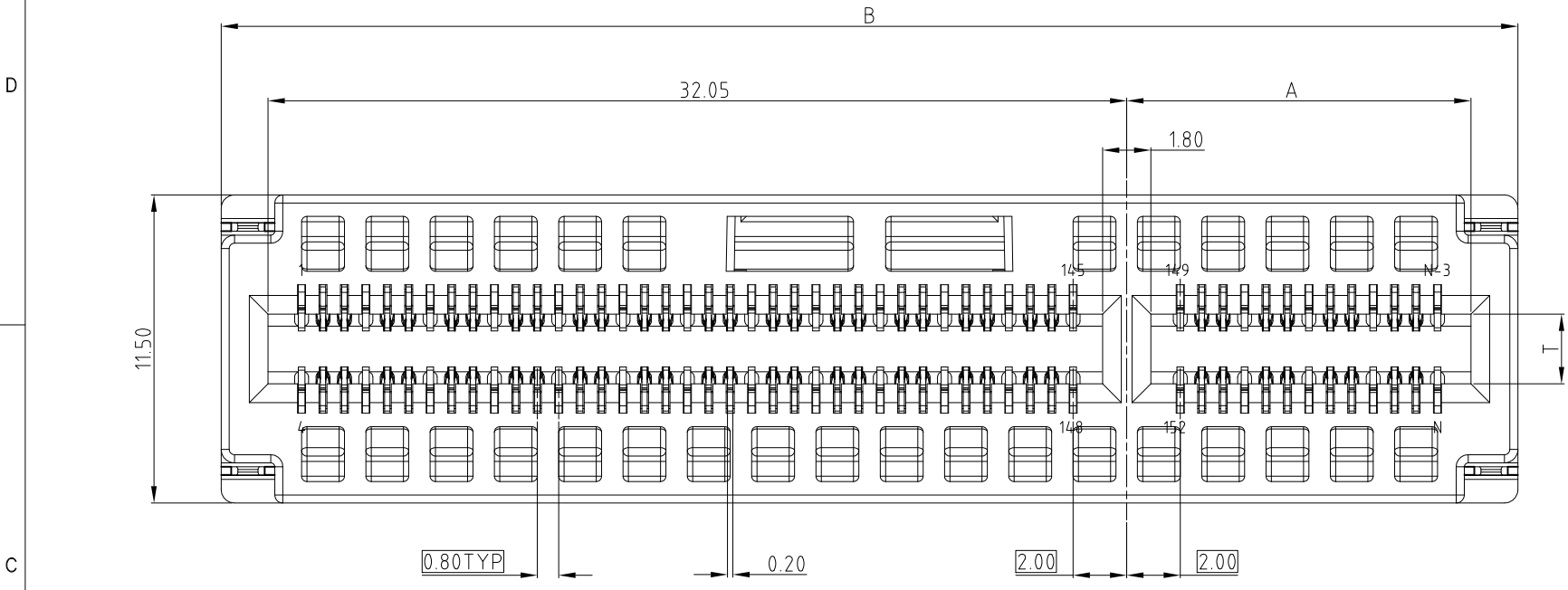
CUSTOMER DRAWING

REVISIONS				
SYM	ECN	DESCRIPTION	DATE	APPROVED
		SEE SHEET 1		

DIM FORM

PIN COUNT	200
A	12.85
B	48.4
C	46.4
D	12.55

CARD THICKNESS	1.60	2.36
T	1.80	2.60

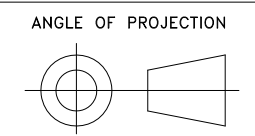


UNLESS OTHERWISE SPECIFIED TOLERANCES	
U.S.	METRIC
.X +/-	0.50
.XX +/-	0.30
.XXX +/-	0.15
FRACTIONS +/-	
ANGLES +/-	2°

APPROVAL	DATE
DRAWN	Mar.13,2020
CHECKED	
APPROVED	

Amphenol		
TITLE COOL EDGE DOUBLE DENSITY CONNECTOR 0.80MM PITCH, VERTICAL		
SIZE A3	DRAWING NO. C CEDX1XXX11XXXX	REV. 11
SCALE NONE	SHEET 3 OF 5	

FOR MATERIALS AND FINISHES SEE NOTES	
REMOVE SHARP EDGES	
DIMENSIONS	
U.S.	INCHES
(METRIC)	(mm)



This document is the property of Amphenol Corporation and is delivered on the express condition that it is not to be disclosed, reproduced or used, in whole or in part, for manufacture or sale by anyone other than Amphenol Corporation without its prior consent, & that no right is granted to disclose or to use any information in this document.

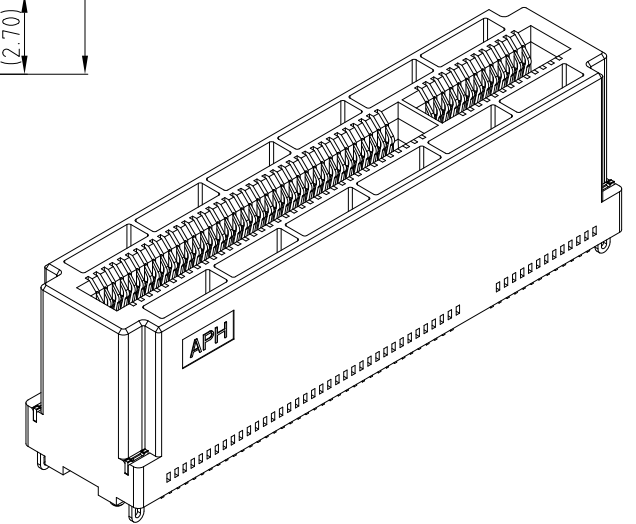
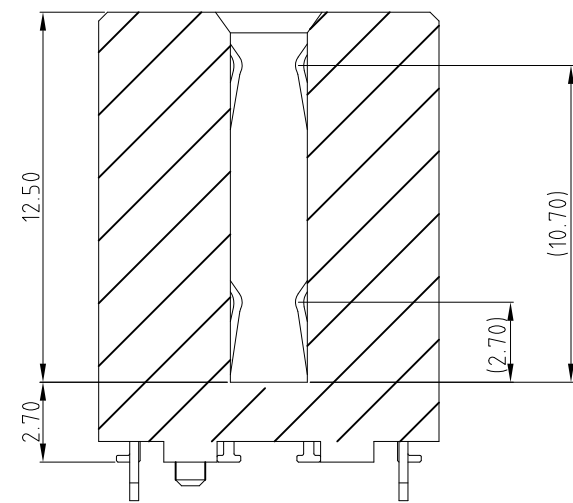
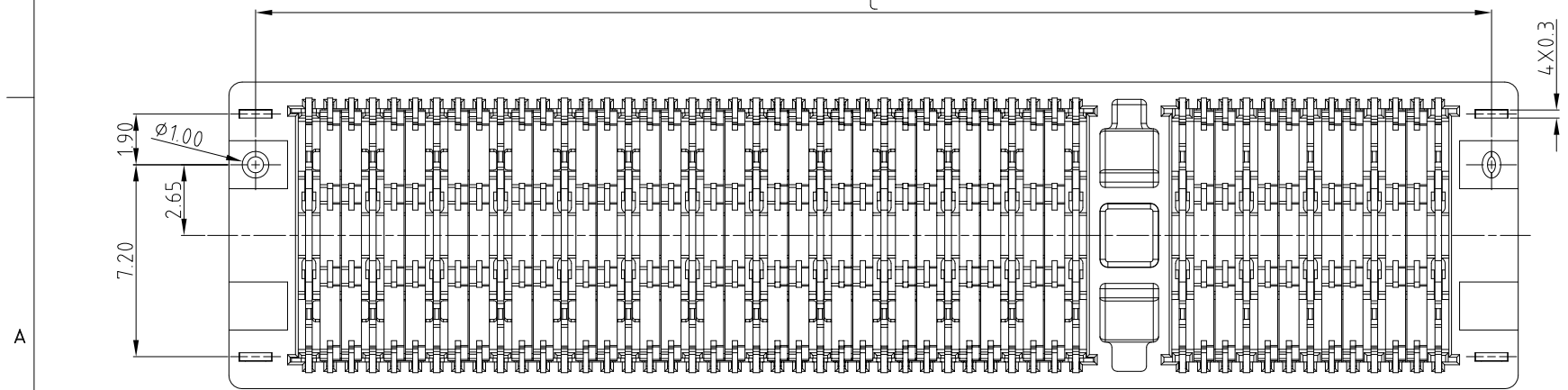
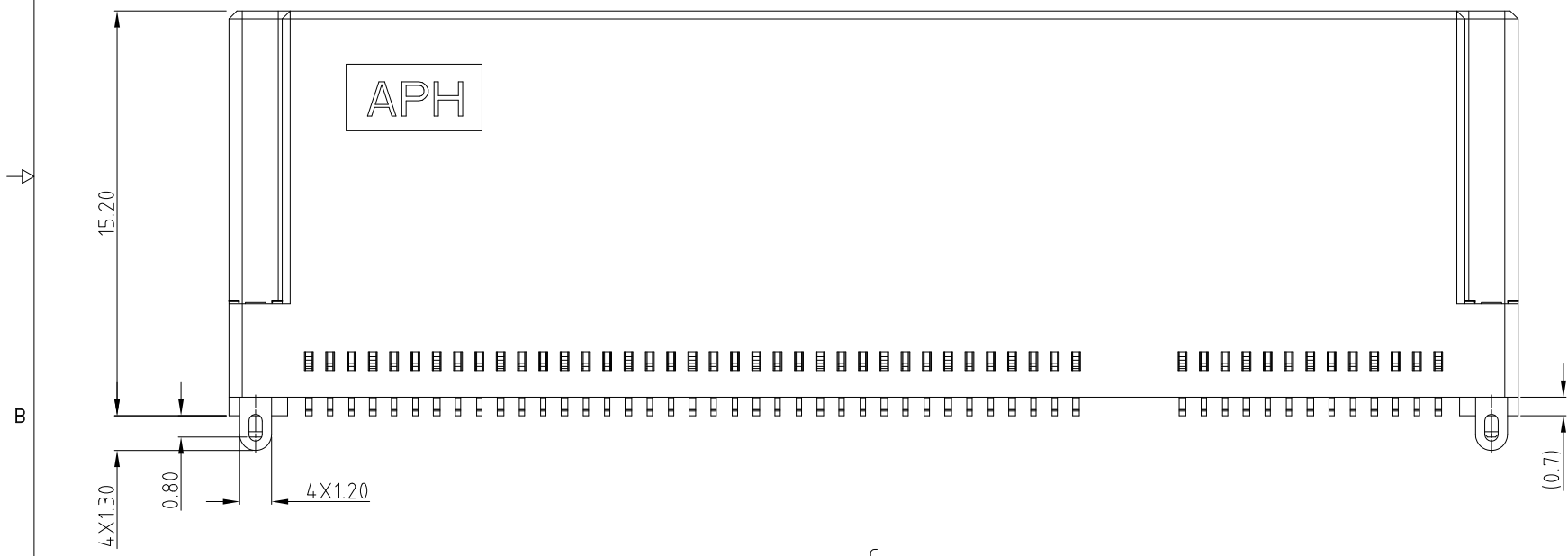
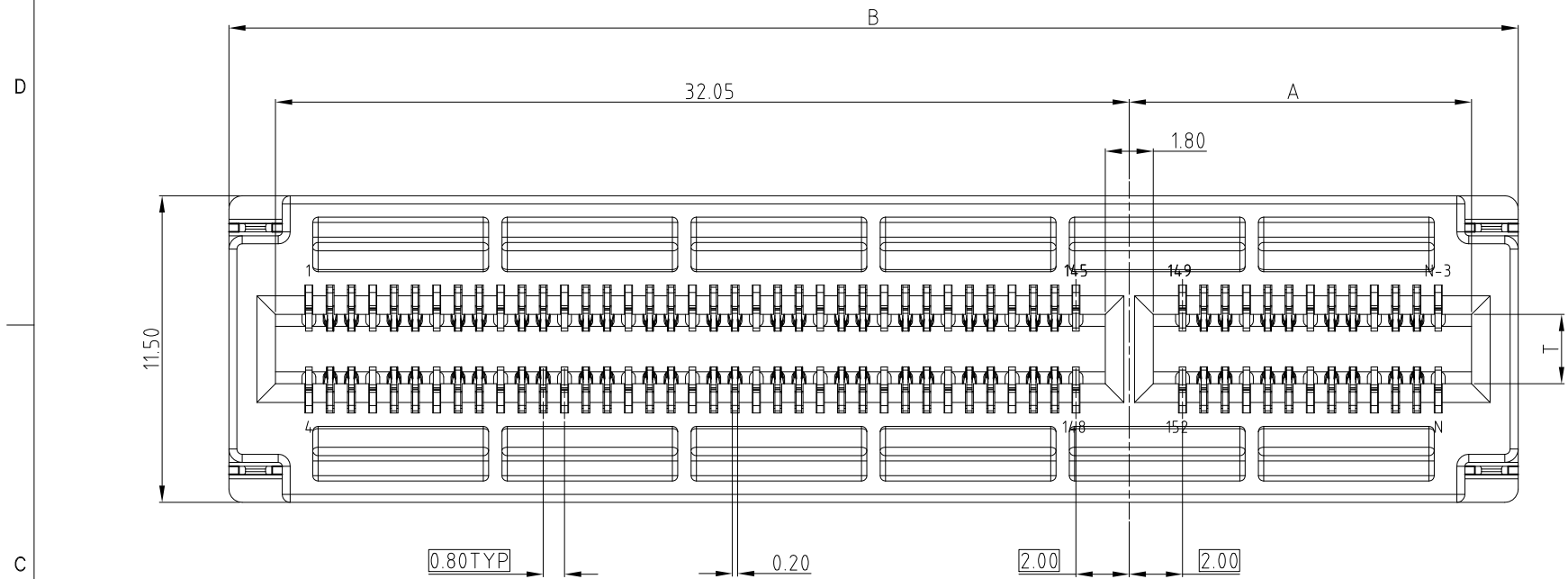
CUSTOMER DRAWING

REVISIONS				
SYM	ECN	DESCRIPTION	DATE	APPROVED
		SEE SHEET 1		

DIM FORM

PIN COUNT	248	284	320	356	392	428
A	22.45	29.65	36.85	44.05	51.25	58.45
B	58.0	65.2	72.4	79.6	86.8	94.0
C	56.0	63.2	70.4	77.6	84.8	92.0
D	22.15	29.35	36.55	43.75	50.95	58.15

CARD THICKNESS	1.60	2.36
T	1.80	2.60



UNLESS OTHERWISE SPECIFIED TOLERANCES	
U.S.	METRIC
.X +/-	0.50
.XX +/-	0.30
.XXX +/-	0.15
FRACTIONS +/-	
ANGLES +/-	2°

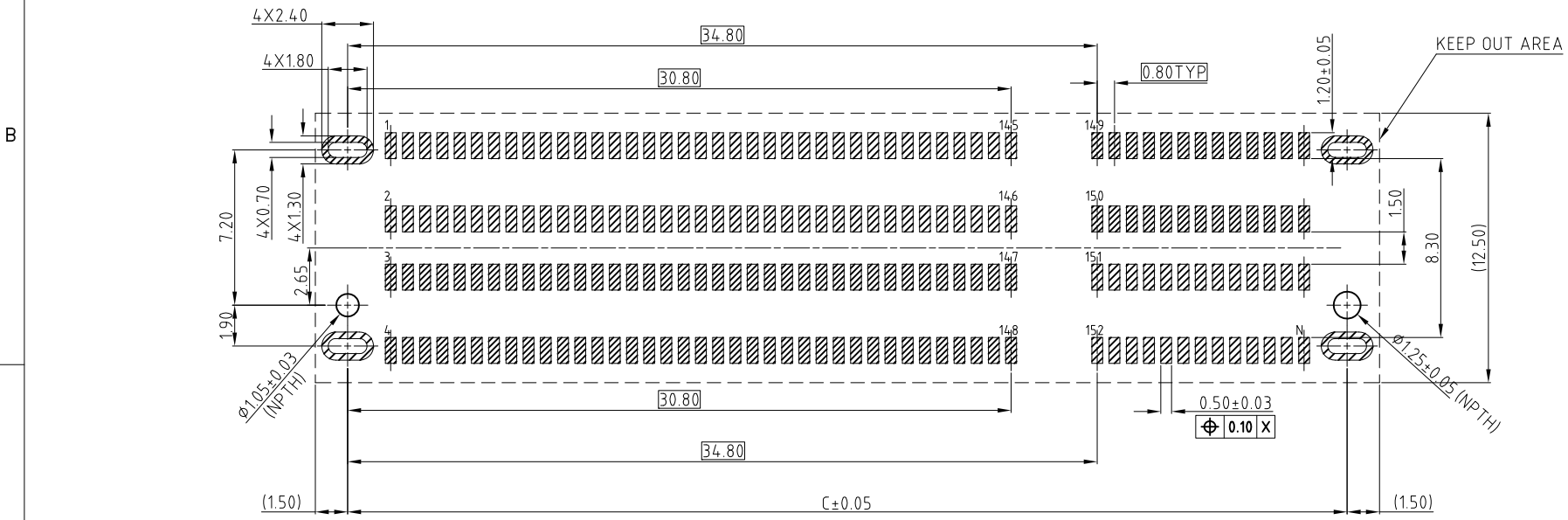
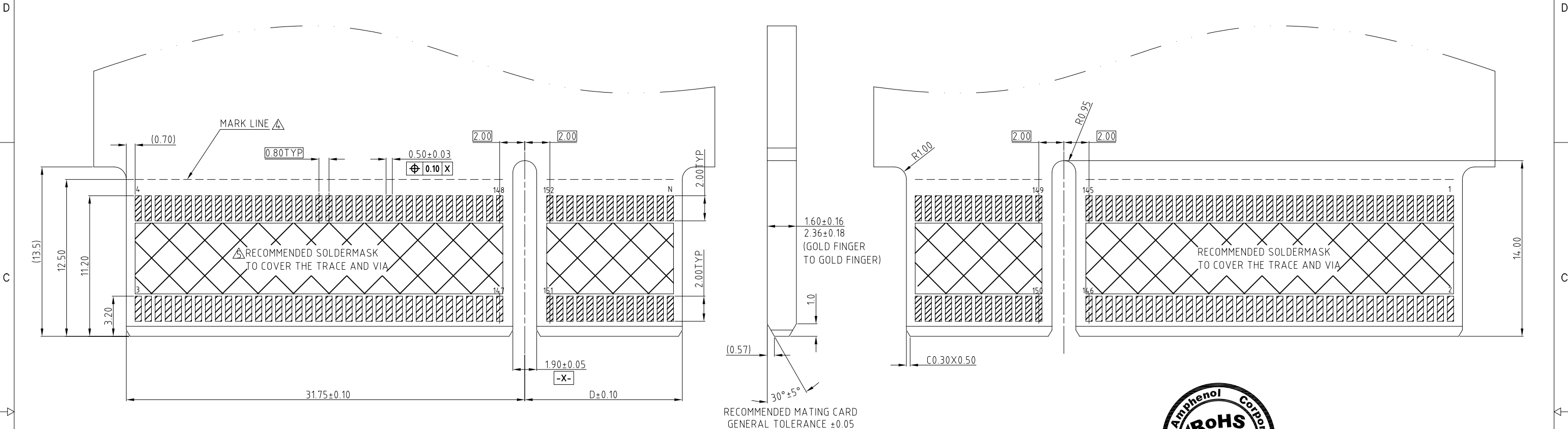
APPROVAL	DATE
DRAWN	Mar.13,2020
CHECKED	
APPROVED	
DRAWING FILE :	
INTERNAL\DRAWING\CE\C CEDX1XXX11XXXX	
ANGLE OF PROJECTION	

Amphenol		
TITLE		
COOL EDGE DOUBLE DENSITY CONNECTOR 0.80MM PITCH, VERTICAL		
SIZE	DRAWING NO.	REV.
A3	C CEDX1XXX11XXXX	11
SCALE	NONE	SHEET 4 OF 5

This document is the property of Amphenol Corporation and is delivered on the express condition that it is not to be disclosed, reproduced or used, in whole or in part, for manufacture or sale by anyone other than Amphenol Corporation without its prior consent, & that no right is granted to disclose or to use any information in this document.

CUSTOMER DRAWING

REVISIONS				
SYM	ECN	DESCRIPTION	DATE	APPROVED
		SEE SHEET 1		



SOLDERABLE FINISH PLATING ON ALL PADS
RECOMMENDED CONNECTOR FOOTPRINT LAYOUT COMPONENT SIDE SHOWN
GENERAL TOLERANCE ±0.05

PIN DEFINE

PIN	PIN 1	PIN 5	PIN 9	PIN 13	PIN 133	PIN 137	PIN 141	PIN 145	KEY	PIN 149	PIN 153	PIN 157	PIN 161	PIN 412	PIN 417	PIN 421	PIN 425
UPPER ROW	G	S	S	G	G	S	S	G		G	S	S	G	G	S	S	G
LOWER ROW	G	S	S	G	G	S	S	G		G	S	S	G	G	S	S	G
UPPER ROW	G	S	S	G	G	S	S	G		G	S	S	G	G	S	S	G
PIN	PIN 4	PIN 8	PIN 12	PIN 16	PIN 136	PIN 140	PIN 144	PIN 148		PIN 152	PIN 156	PIN 160	PIN 164	PIN 416	PIN 420	PIN 424	PIN 428

NOTE:

- ALL GND PINS WERE LINKED TOGETHER INSIDE OF CONNECTOR FOR FULL HIGH SPEED APPLICATION
 - OR 4 GND PINS (FROM A WAFER) LINKED FOR LOW SPEED
 - FOR POWER APPLICATION, PLEASE REFER THE APPLICATION SPEC.
- △ THIS MARK LINE TO SHOW THE AIC INSERT COMPLETELY WHEN IT CLOSED CONNECTOR SURFACE
△ RECOMMENDED USING SOLDERMASK TO COVER THE TRACE AND VIA

UNLESS OTHERWISE SPECIFIED TOLERANCES U.S. METRIC .X +/- 0.50 .XX +/- 0.30 .XXX +/- 0.15 FRACTIONS +/- ANGLES +/- 2° FOR MATERIALS AND FINISHES SEE NOTES REMOVE SHARP EDGES DIMENSIONS —U.S.— INCHES (METRIC) (mm)	APPROVAL	DATE	<h1>Amphenol</h1>
	DRAWN	Mar.13,2020	
	CHECKED		
	APPROVED		
	DRAWING FILE :		TITLE
	INTERNAL\DRAWING\CE\C CEDX1XXX11XXXX		COOL EDGE DOUBLE DENSITY CONNECTOR 0.80MM PITCH, VERTICAL
	ANGLE OF PROJECTION		SIZE DRAWING NO. REV.
			A3 C CEDX1XXX11XXXX 11
			SCALE NONE SHEET 5 OF 5