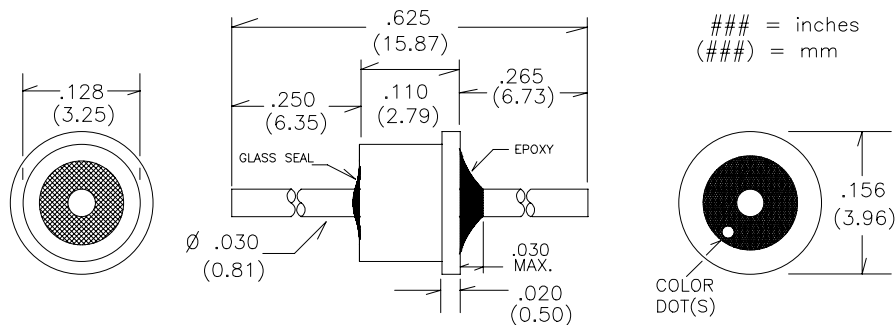
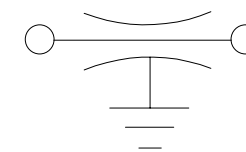


# ZSC333A

INDUSTRY STANDARD .128" DIAMETER  
33,000pF HERMETIC SOLDER-IN

## CIRCUIT



- \* RoHS Compliant
- \* Discoidal Capacitor Construction

PART NUMBER	EMI P/N	CAP. (pF)	COLOR DOT(S)	MAX. WVDC	DC AMPS	MINIMUM NO LOAD INSERTION LOSS				
						1 MHz	10 MHz	100 MHz	1 GHz	10 GHz
ZSC333A		33,000	2 RED	50	10	10	30	44	65	65

## ELECTRICAL

CAPACITANCE TOLERANCE: +100/-0%

DISSIPATION FACTOR: 3.5% MAX.

INSULATION RESISTANCE:

25° C=10,000 Mohm Min.

125° C=1,000 Mohm Min.

DIELECTRIC STRENGTH (DWV):

250% of WVDC (5 seconds)

TEMPERATURE CHARACTERISTIC:

X7R or better

## PHYSICAL

DIMENSION TOLERANCE:

CASE LENGTH: +/- .010" (.250mm)

LEAD LENGTH: +/- .030" (.762mm)

LEAD DIAMETER: +/- .002" (.051mm)

MATERIAL AND FINISH:

CASE: C12L14 CRS

LEAD: Alloy 52

FINISH: GOLD per MIL-G-45204

TYPE II, CLASS 0 (std)

## IDENTIFICATION & LIMITS

MARKING: Color Dot standard per chart

OPERATING TEMP: -55° C to +125° C

INSTALLATION TEMPERATURE: 225° - 250° C

VENDOR:

EMI FILTER COMPANY  
12750 59th Way N.  
Clearwater, FL 33760

(727) 585-7990  
(727) 586-5138 FAX

www.emifiltercompany.com

FILTERS, EMI, SOLDER-IN STYLE,  
STANDARD SEAL

FSCM NO.

DWG NO.

ZSC333A REVD

REV

D