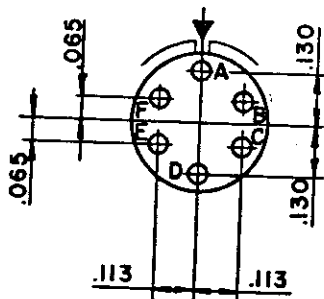
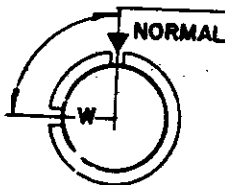


L-15210-6



6 SIZE 20 CONTACTS



CONSIDER INSERT POSITION FIXED WITH SHELL ROTATING TO ALTERNATE POSITION

3

ARR NO.	ALTERNATE KEYWAY POS	
-6	W	90°

NOTE:

1. FRONT FACE OF PIN INSERT SHOWN.

3

SERVICE RATING: TYPE I

MATERIAL SPEC.	PROCESS SPEC.	SCINTILLA DIVISION BENDIX AVIATION CORPORATION SIDNEY, N. Y. - U.S.A.					TOLERANCES UNLESS OTHERWISE SPECIFIED		
HEAT TREAT SPEC.	FINISH SPEC.						NAME INSERT ARRANGEMENT, SIZE 10-620		FRACTIONS ± ~
				CONCENTRICITY TIR ~		SURFACE ROUGHNESS MICRO-IN RMS MAX. ~			
				NEXT ASSEMBLY		WEIGHT - LBS.			
				SUPERSEDES		AND IS NOT INTERCHANGEABLE			
				SUPERSEDED BY		REF.			
				D'MAN		APPROVED		SCALE	
				GREER		NONE		L-15210-6	
				7:13-56		1-21-57			

REL	32508-224	WAS	DATE	D'MAN	APPD.
1	51710-1	REDRAWN TO STANDARD AA SIZE FORM.	1-3-57	GREER	B
2	52525-449	ADD SERVICE RATING: TYPE I	9-12-57	F. GEORGE	F. MAY
3	35525-822	20 M (2 PLACES); ADD ALT POS NOTE	7-13-59	LAMBERT	ll
A1	43531-66	STD PRACTICE	7-22-65	Russell	Hays