

CUSTOMER TERMINAL	RoHS	LEAD(Pb)-FREE
Sn100%	Yes	Yes



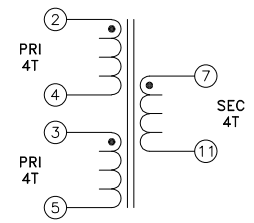
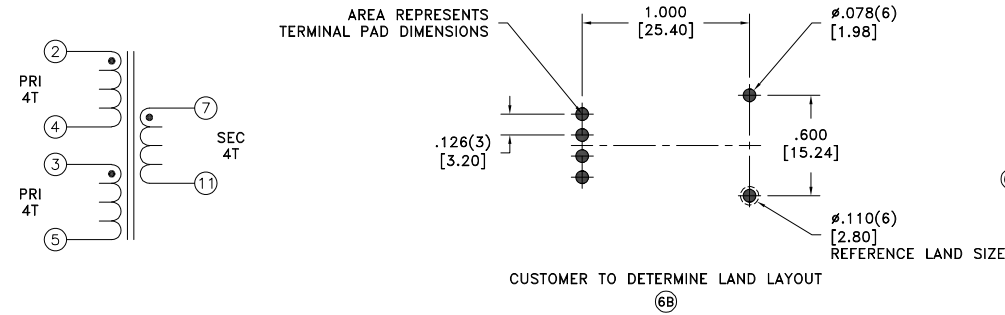
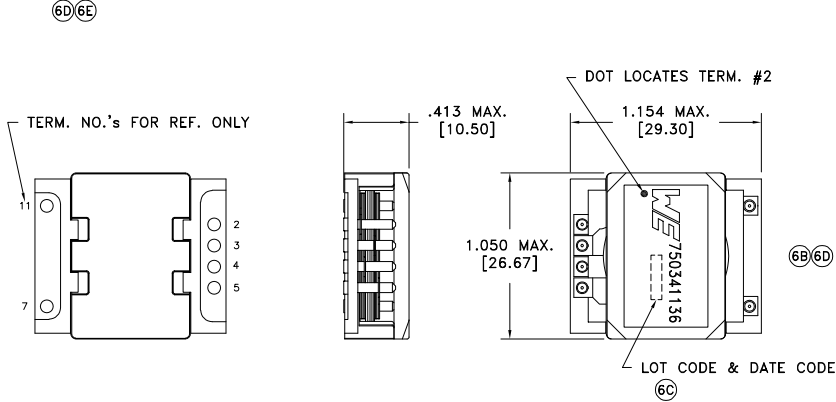
ELECTRICAL SPECIFICATIONS @ 25°C unless otherwise noted:

PARAMETER	TEST CONDITIONS	VALUE
D.C. RESISTANCE	2-4 @20°C	5 mOhms max.
D.C. RESISTANCE	3-5 @20°C	5 mOhms max.
D.C. RESISTANCE	7-11 @20°C	3.5 mOhms max.
⑥D INDUCTANCE	2-5 tie(3+4), 100kHz, 100mVAC, Ls	260.0uH min.
LEAKAGE INDUCTANCE	2-5 tie(3+4, 7+11), 100kHz, 100mVAC, Ls	400nH max.
⑥D DIELECTRIC	2-7 tie(3+4), 2250VDC, 1 second	-
TURNS RATIO	(2-4):(7-11)	1:1, ±1%
TURNS RATIO	(3-5):(7-11)	1:1, ±1%

GENERAL SPECIFICATIONS:

OPERATING TEMPERATURE RANGE: -40°C to +125°C including temp rise.

⑥F VOLTAGE-TIME: 160VuS



REV.	DATE	Packaging Specifications	CONVENTION PLACEMENT
6F	2/22	Method: Tape & Reel	
6E	4/20	PKG-0793	
6D	5/14	www.we-online.com/midcom	
6C	11/12	SEE REVISION SHEET FOR REVISION LEVEL	

Tolerances unless otherwise specified:
 Angles: ±1° Decimals: ±.005 [.13]
 Fractions: ±1/64 Footprint: ±.005 [.13]

This drawing is dual dimensioned. Dimensions in brackets are in millimeters.

DRAWING TITLE
TRANSFORMER

eiSos p/n: 750341136

PART NO.
750341136

SPECIFICATION SHEET 1 OF 1