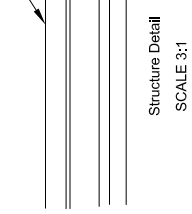
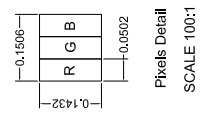
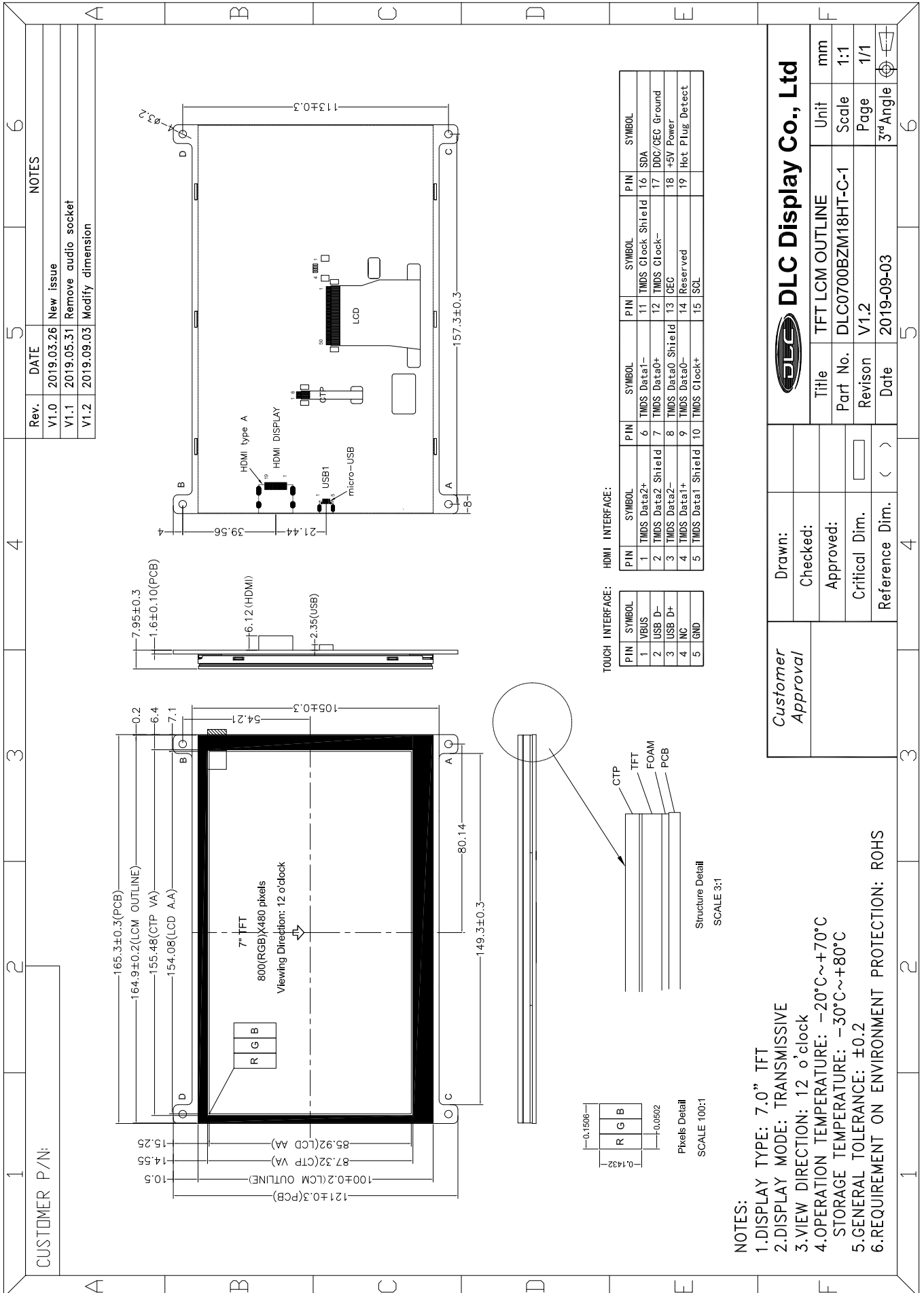




Outline Drawing



**TOUCH INTERFACE:**

PIN	SYMBOL
1	VBUS
2	USB D-
3	USB D+
4	NC
5	GND

**HDMI INTERFACE:**

PIN	SYMBOL	PIN	SYMBOL	PIN	SYMBOL
1	TMS Data2+	6	TMS Data1-	11	TMS Clock Shield
2	TMS Data2 Shield	7	TMS Data0+	12	TMS Clock-
3	TMS Data2-	8	TMS Data0 Shield	13	DEC
4	TMS Data1+	9	TMS Data0-	14	Reserved
5	TMS Data1 Shield	10	TMS Clock+	15	ISL
				16	SDA
				17	DDC/DEC Ground
				18	+5V Power
				19	Hot Plug Detect

NOTES:

- 1.DISPLAY TYPE: 7.0" TFT
- 2.DISPLAY MODE: TRANSMISSIVE
- 3.VIEW DIRECTION: 12 o'clock
- 4.OPERATION TEMPERATURE: -20°C~+70°C  
STORAGE TEMPERATURE: -30°C~+80°C
- 5.GENERAL TOLERANCE: ±0.2
- 6.REQUIREMENT ON ENVIRONMENT PROTECTION: ROHS

**Customer Approval**

**DLC Display Co., Ltd**

Drawn:	Checked:	Approved:	Critical Dim.	Reference Dim.

Title	TFT LCM OUTLINE	Unit	mm
Part No.	DLC0700BZM18HT-C-1	Scale	1:1
Revision	V1.2	Page	1/1
Date	2019-09-03	3rd Angle	