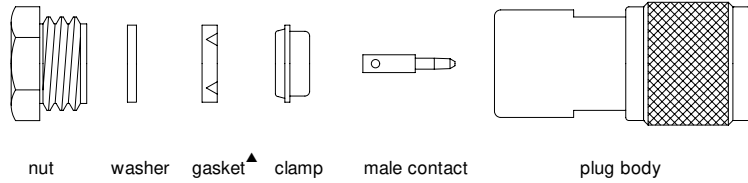


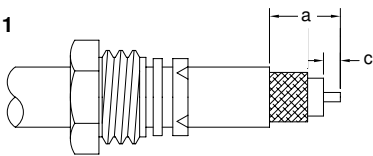
### CLAMP TYPES



Amphenol Number	Connector Type	Cable RG-/U	Strip Dims., inches (mm)	
			a	c
<b>18750</b>	N Angle Plug	58, 141, 142	.484(12.3)	.234(5.9)
<b>34025</b>	N Plug	58, 141, 142	.390(9.9)	.203(5.2)
<b>34025-RFX</b>	N Plug	58, 141, 142	.354(9.0)	.177(4.5)
<b>35275</b>	N Bulkhead Jack	55, 58, 141, 142, 223	.561(14.3)	.172(4.4)
<b>36250</b>	N Panel Jack	55, 58, 141, 142, 223	.375(9.5)	.188(4.8)
<b>82-63</b>	N Jack	8, 9, 87A, 144, 165, 213, 214, 216, 225	.281(7.1)	.156(4.0)
<b>82-67</b>	N Bulkhead Jack	8, 9, 87A, 144, 165, 213, 214, 216, 225	.281 (7.1)	.156(4.0)
<b>82-202</b>	N Plug	8, 9, 144, 165, 213, 214, 216, 225	.359(9.1)	.234(6.0)
<b>82-202-1006</b>	N Plug	Belden 9913	.359(9.1)	.234(6.0)
<b>82-202-RFX</b>	N Plug	8, 213, 214	.315(8.0)	.177(4.5)
<b>82-209-1006</b>	N Jack	Belden 9913, Times AA-6146, 8 group	.281(7.1)	.156(4.0)
<b>82-312</b>	N Plug	8, 9, 144, 165, 213	.359(9.1)	.234(5.9)
<b>82-3202</b>	N Plug	8, 9, 144, 165, 213	.270(6.9)	.150(3.8)

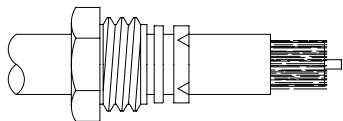
▲ Not supplied with part number 36250

**Step 1**



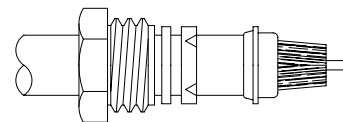
**Step 1** Place nut, washer and gasket (with "V" groove toward open end of cable) over cable, and cut off jacket to dim. **a**.

**Step 2**



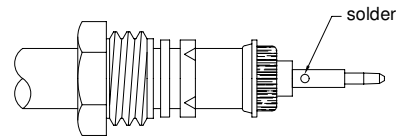
**Step 2** Comb out braid and fold out. Bare center conductor to dim. **c** as shown.

**Step 3**



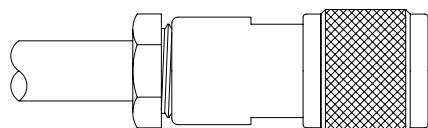
**Step 3** Pull braid wires forward and taper toward center conductor. Place clamp over braid and push back against cable jacket.

**Step 4**



**Step 4** Fold back braid wires as shown, trim braid to proper length and form over clamp as shown. Tin center conductor and solder on contact.

**Step 5**



**Step 5** Insert cable and parts into connector body. Make sure sharp edge of clamp seats properly in gasket. Tighten nut.